

Gateway Upgrade South and South East Busway Extension

Future stages

Transport and Main Roads is continuing to investigate delivery of future staged upgrades of the Gateway and Pacific motorways, and South East Busway to improve safety, connectivity and reliability to and from the network.

Upgrades and improvements will be undertaken on a priority needs basis and as future funding becomes available.

For more information log on to www.tmr.qld.gov.au and search 'Gateway Upgrade South Projects' and 'South East Busway extension'.

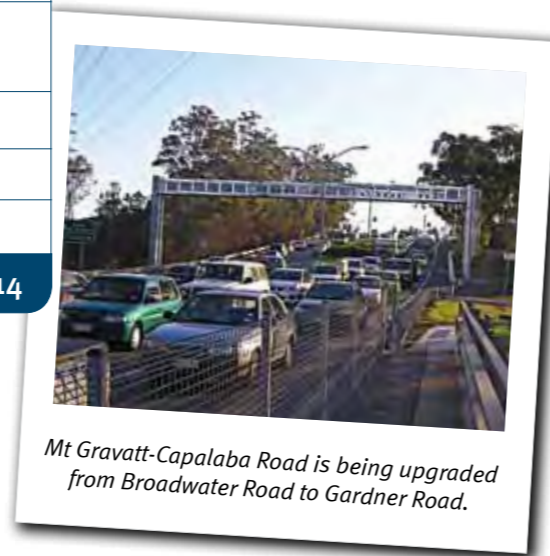


The South East Busway will be extended from Eight Mile Plains to School Road.

Stage 2 project timeline

Funding announced	Completed			
Community engagement to inform the community about the project	Ongoing			
Planning and design phase	Ongoing			
Construction phase		Pending		
Completion of all activities				
	2011	2012	2013	2014

Completion of the project is subject to weather and construction conditions.



Mt Gravatt-Capalaba Road is being upgraded from Broadwater Road to Gardner Road.

Community engagement

The project team is committed to providing timely information and being available to answer any queries about the project as it moves towards construction. Community displays will be held at local shopping centres prior to construction.

For more information and to provide feedback

Visit: www.tmr.qld.gov.au (search 'Gateway Upgrade South Projects')

Phone: 1800 268 257
Free call from anywhere in Australia, call charges apply for calls from mobile phones and payphones.

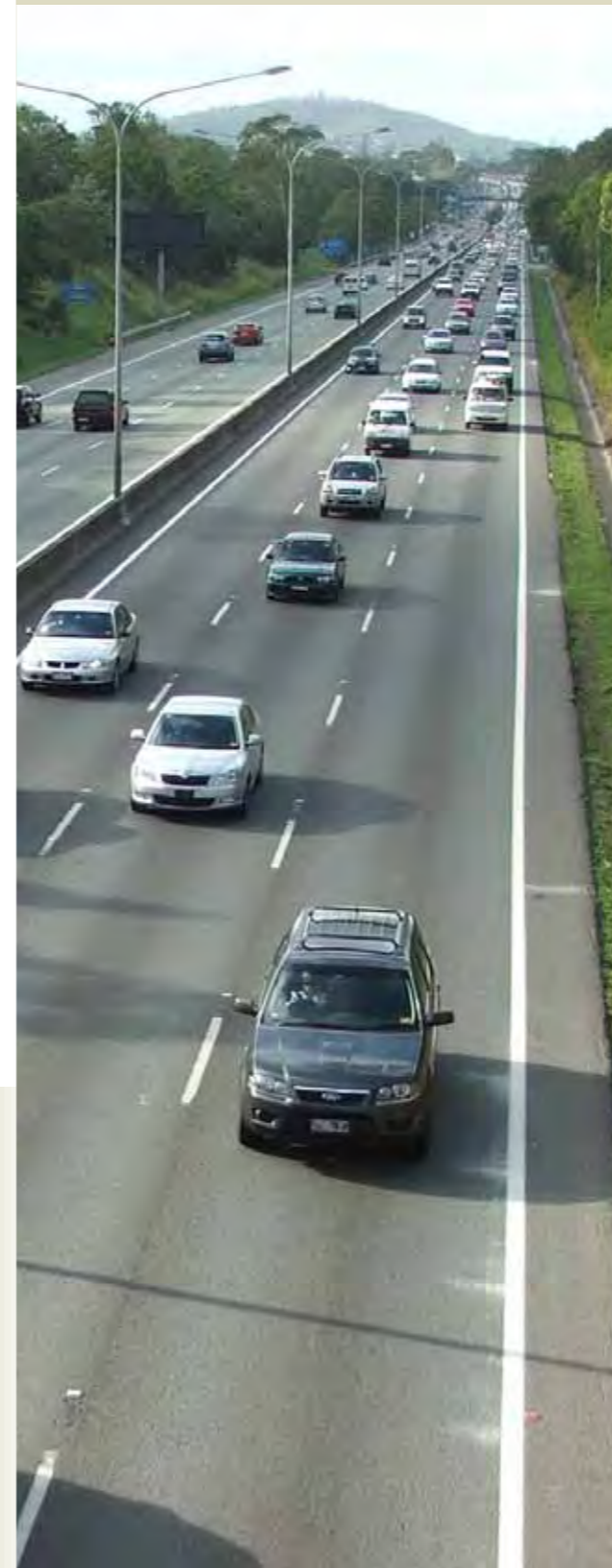
Email: gatewaysouth@tmr.qld.gov.au

Post: Gateway Upgrade South Projects
Department of Transport and Main Roads
Reply Paid 2439
Brisbane Qld 4001
Free postage

Traffic updates: 13 19 40 or visit www.131940.qld.gov.au



The Gateway Motorway southbound on-ramp is being extended to improve safety.



The Queensland Government is upgrading the Gateway Motorway between Mt Gravatt-Capalaba Road and Eight Mile Plains.

Stage 1 (completed)

Stage 1 of the Gateway Upgrade South project to upgrade the motorway from four to six lanes from Mount Gravatt-Capalaba Road to Miles Platting Road was completed in July 2011.

Stage 2 (planning underway)

The Australian Government and Queensland Government recently committed a further \$140 million of joint funding to progress design and construction for the next stage of the Gateway Upgrade South Projects.

Stage 2 works include upgrading Mount Gravatt-Capalaba Road from Broadwater Road to Gardner Road and extending the Gateway Motorway southbound on-ramp to the Pacific Motorway.

As part of this project, the Queensland Government will invest a further \$36 million to extend the South East Busway from Eight Mile Plains to Rochedale (School Road) including provision for a future extension towards Springwood.

Design for the Stage 2 works is now underway. Construction is set to start by late 2012 and be completed by mid-2014, weather and construction conditions permitting.

Stage 2 project benefits

Safety

A safer connection with the Gateway Motorway, between Mount Gravatt-Capalaba Road and the Pacific Motorway.

Efficiency

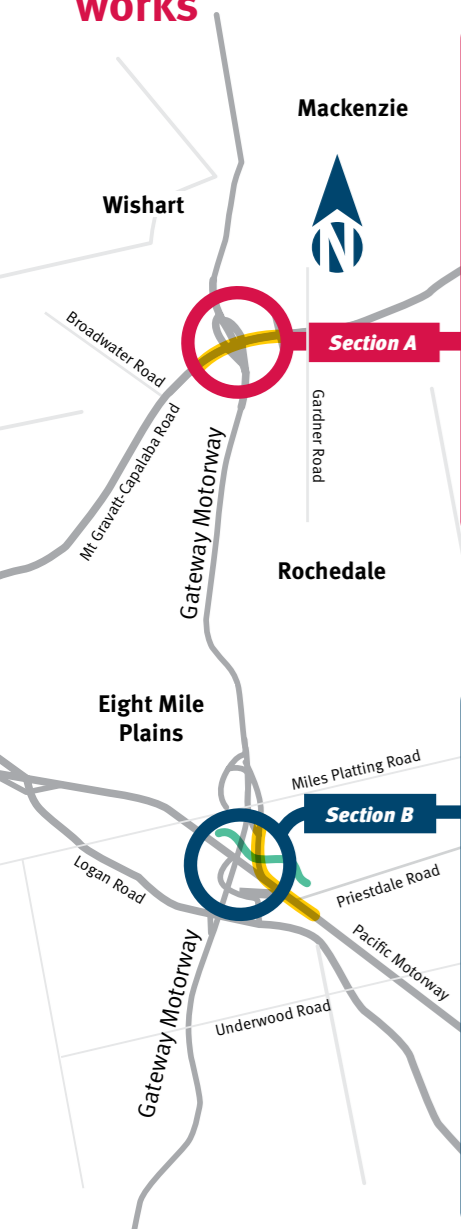
A more efficient and reliable motorway and supporting transport infrastructure with capacity to accommodate future growth.

Connectivity

Improved connectivity and sustainable transport outcomes for communities along the motorway corridor between Wishart/Mackenzie and Eight Mile Plains/Rochedale.

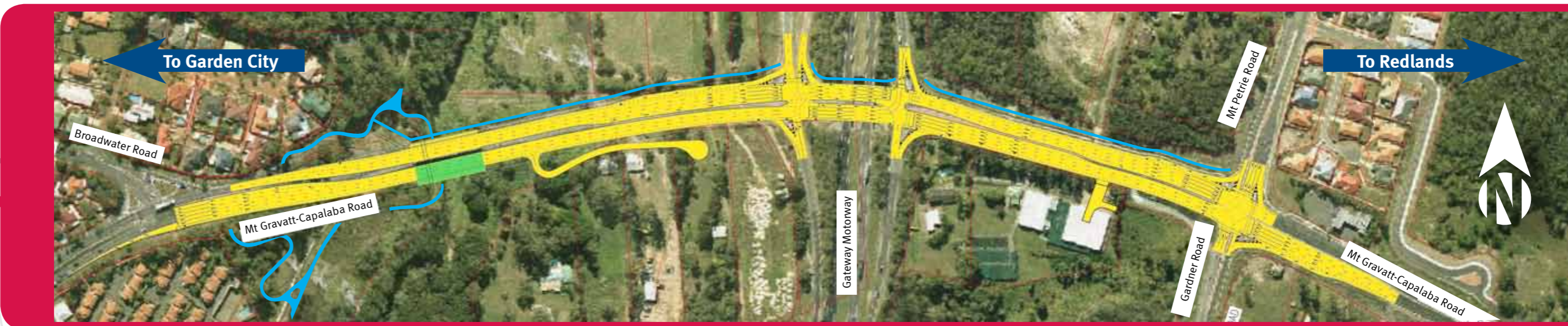
01459

Map of Stage 2 works

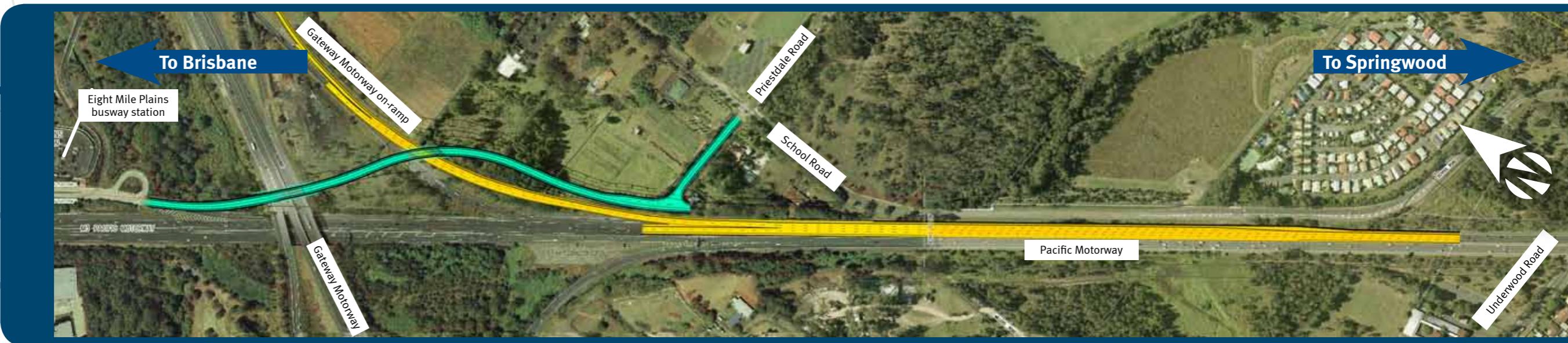


Section A Mt Gravatt-Capalaba Road upgrade (Broadwater Road to Gardner Road)

Stage 2 works New bridge over Bulimba Creek South East Busway extension Cycle network



Section B Upgrade of the Gateway Motorway southbound on-ramp to the Pacific Motorway and South East Busway extension (Eight Mile Plains to School Road, Rochedale)



Overview – Stage 2 works

Section A

Mount Gravatt-Capalaba Road upgrade (Broadwater Road to Gardner Road)

Widening Mount Gravatt-Capalaba Road from four to six lanes will improve access to and from the Gateway Motorway and benefit over 35 000 motorists who use Mount Gravatt-Capalaba Road daily.

The upgrade will also improve connectivity and safety for pedestrians and cyclists.

Section B

Gateway Motorway southbound on-ramp to the Pacific Motorway

The Gateway Motorway southbound on-ramp to the Pacific Motorway is one of Queensland's busiest on-ramps with an average of 30 000 vehicle movements per day.

Extending and upgrading the on-ramp alignment will improve safety and reliability for motorists allowing more distance and time to merge with through traffic.

South East Busway extension

The busway will be extended from the Eight Mile Plains busway station to School Road and includes provision for future extensions towards Springwood.

The extension of the busway will allow buses from Rochedale and Rochedale South to directly access the South East Busway network without the need to use the Pacific or Gateway motorways or the Miles Platting Road interchange.

Upcoming works

To mid-2012

Planning and design for Stage 2 works are now underway. This will involve a number of activities in the road corridor including geotechnical investigations, confirming survey information and locating underground services.

Residents and businesses in the immediate area will be notified in advance of any planned works and activities.

Did you know?

The Gateway Motorway carries over 80 000 vehicles each day and is a key freight corridor for heavy vehicle trips, providing connections to the Port of Brisbane and Brisbane Airport.

Maps are concept design only - detailed design to be completed in 2012.

Mid-2012 to late 2014

Construction contracts are expected to be awarded in 2012 with full construction commencing in late 2012/early 2013.

Construction is expected to be completed at both sites by mid-2014, weather and construction conditions permitting.

