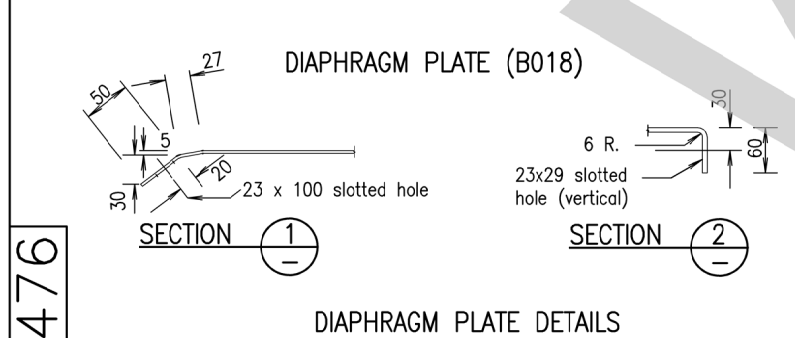
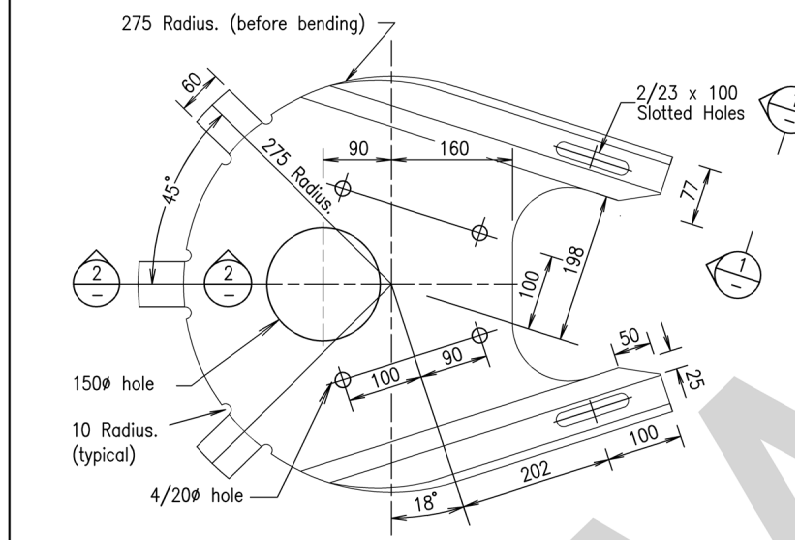
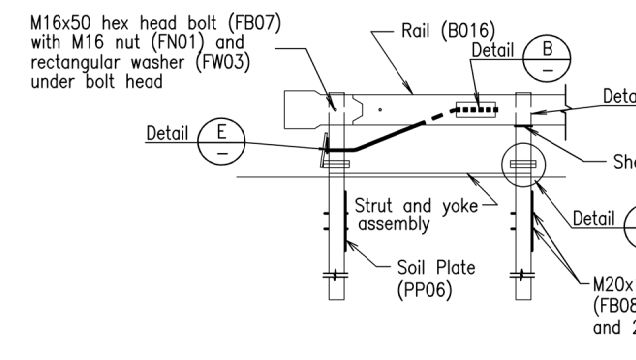
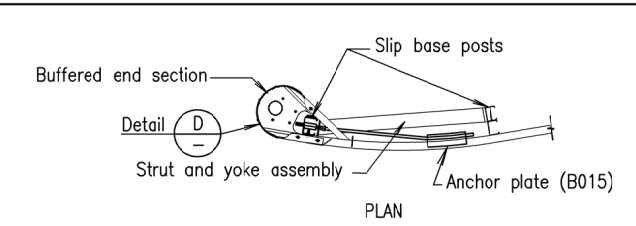


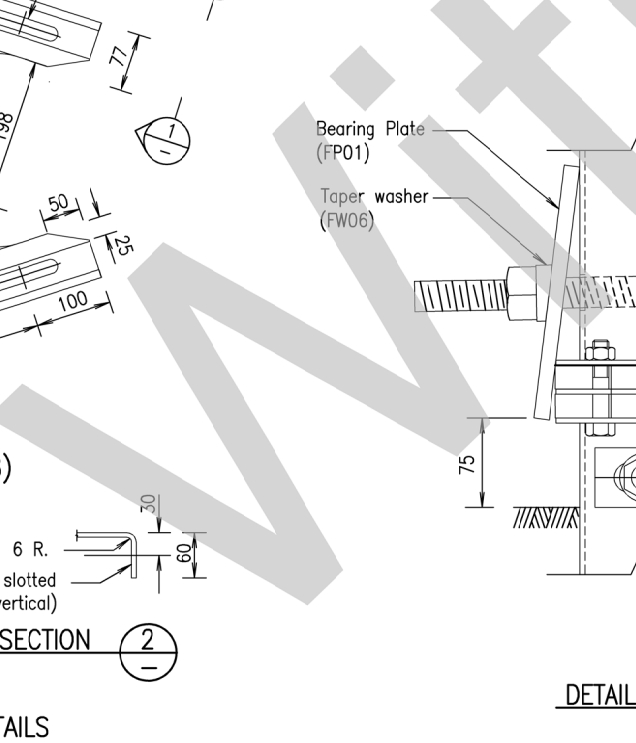
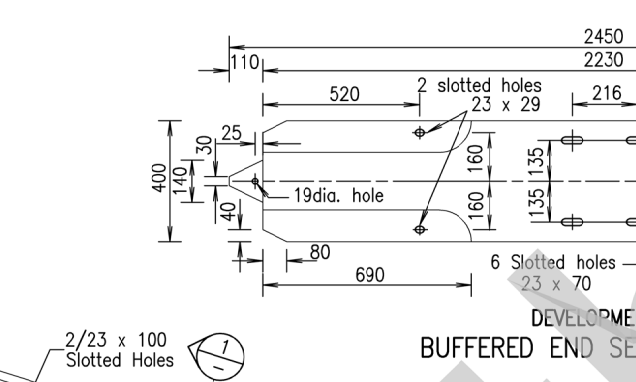
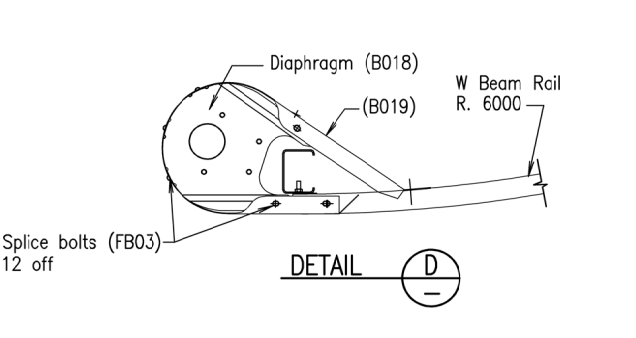
BUFFERED END ASSEMBLY



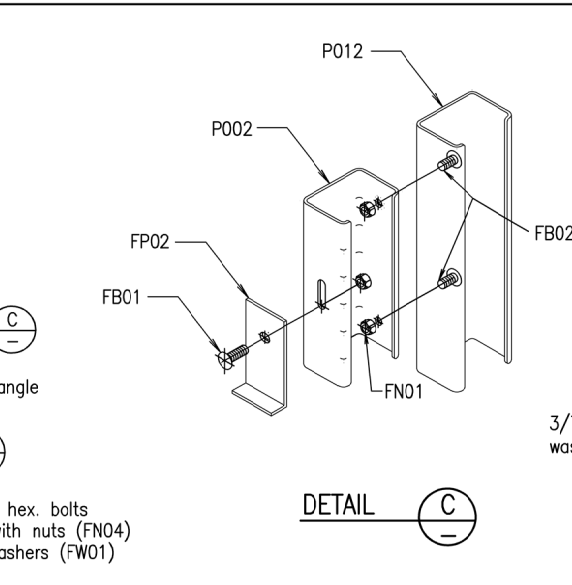
DIAPHRAGM PLATE DETAILS



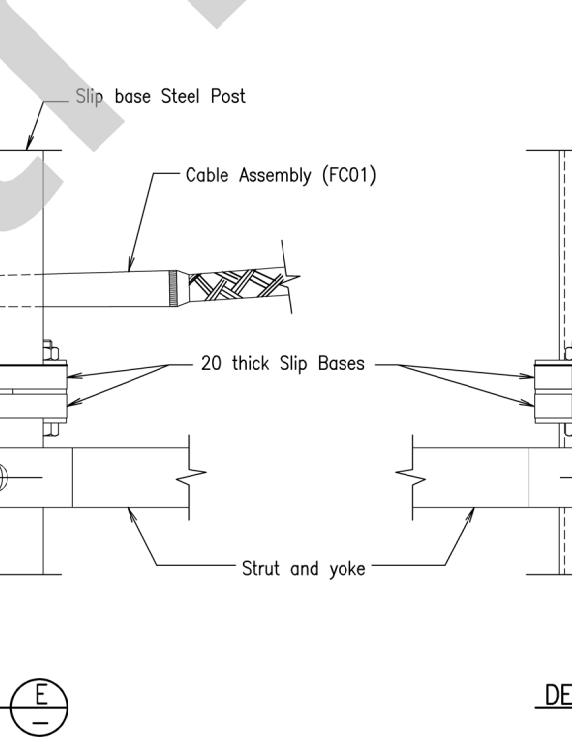
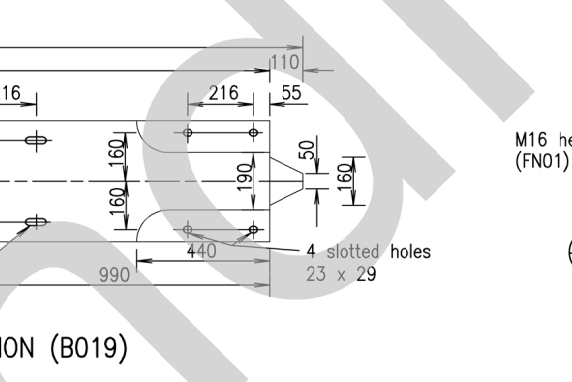
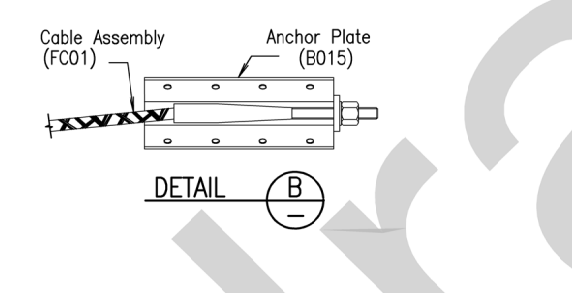
BUFFERED END & ANCHORAGE ASSEMBLY



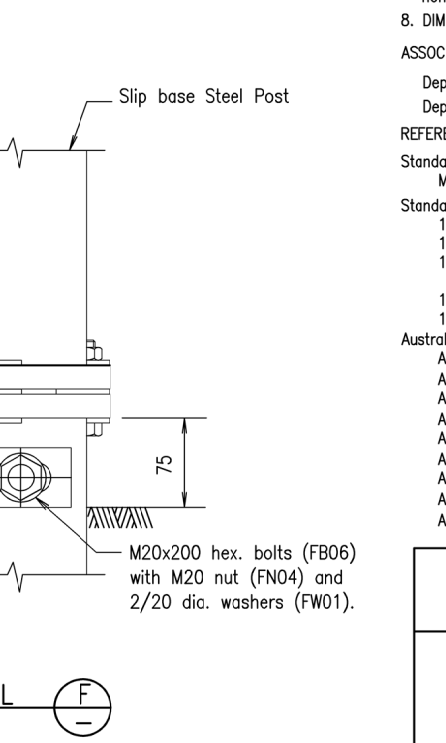
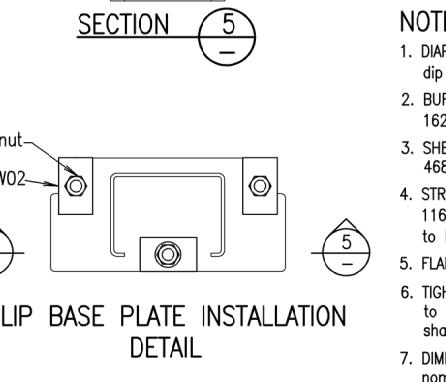
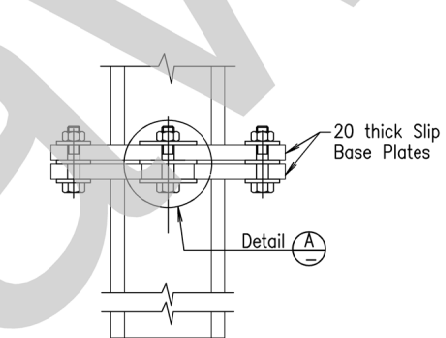
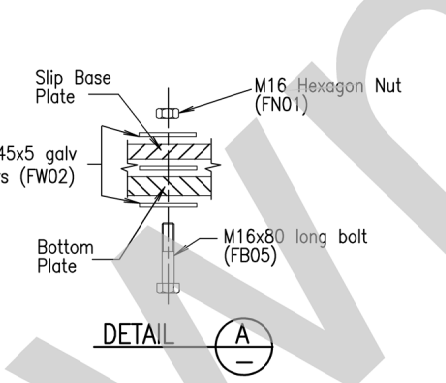
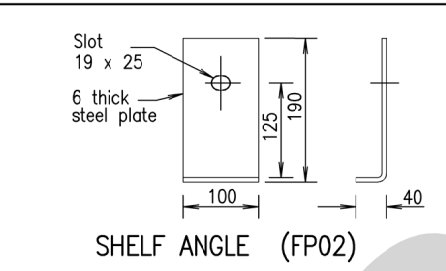
DETAIL E



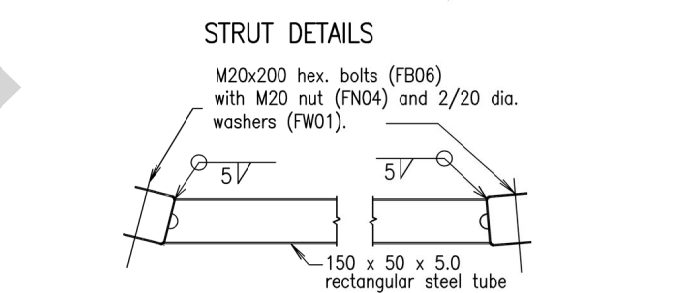
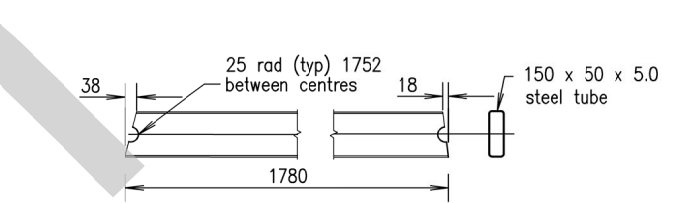
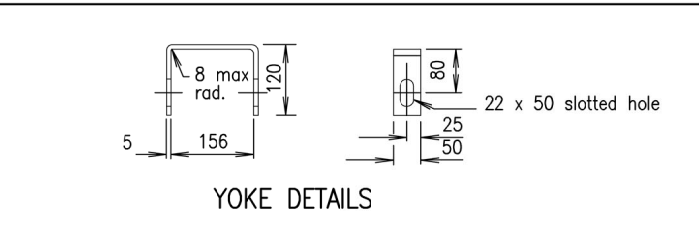
SHELF ANGLE & BLOCK ASSEMBLY POSTS #2 TO #6



DETAIL F



DETAIL E  
DETAIL F



Welding shall be in accordance with AS/NZS 1554.1

STRUT AND YOKE ASSEMBLY (P014)

- NOTES :
- DIAPHRAGM from 3.0 BMT Grade HA250 steel to AS/NZS 1594, treated to AS 1627 and hot dip galvanised to AS/NZS 4680 after fabrication.
  - BUFFERED END SECTION from 2.7 BMT Grade HA350 steel to AS/NZS 1594, treated to AS 1627 and hot dip galvanised to AS/NZS 4680 after fabrication.
  - SHELF ANGLE from 6 BMT Grade 250 to AS/NZS 1594 and hot dip galvanised to AS/NZS 4680 after fabrication.
  - STRUT AND YOKE : Strut to be Rectangular Hollow Section Grade 350 in accordance with AS 1163. Yoke to be steel Grade 300 in accordance with AS/NZS 1594. Strut and Yoke Assembly to have weld spatter and slag removed prior to hot dip galvanising to AS/NZS 4800.
  - FLAME CUTTING of components is not permitted.
  - TIGHTENING OF NUTS : Nut FN01 for slip base plates to be tightened to 25 Nm. Nut FN05 to cable assembly to be tightened so that there is no slack in the cable. All other nuts shall be snug tight to AS 4100.
  - DIMENSIONS are subject to manufacturer's tolerances except where allowable tolerances are nominated.
  - DIMENSIONS are in millimetres unless otherwise shown.

ASSOCIATED DOCUMENTS :  
Department of Main Roads Manual of Standard Drawings Roads  
Department of Main Roads Manual of Standard Specifications Roads

REFERENCED DOCUMENTS :  
Standard Specifications :  
MRS11.14 Road Furniture  
Standards Drawings :  
1474 Steel Beam Guardrail - Installation and Setout  
1477 Steel Beam Guardrail - Posts and Blockouts, Soil and Bearing Plates, Slip Base Plate  
1478 Steel Beam Guardrail - W Bea anchor Bracket  
1479 Steel Beam Guardrail - Bolts, Nuts, Screws and  
1480 Steel Beam Guardrail - Fabrication Details for W  
Australian Standards :  
AS 1101.3 Graphical symbols for general engineering -  
AS/NZS 1252 High strength steel bolts with associate  
AS 1554 Structural Steel Welding  
AS/NZS 1594 Hot Flat Products  
AS 1627 Metal Finishing - Preparation and Pretreatme  
AS/NZS 3845 Road Safety Barrier Systems  
AS 4100 Steel Structures  
AS/NZS 4671 Steel Reinforcing Material  
AS/NZS 4800 Hot-Dip galvanized (zinc) coating on fal

This Standard Drawing is withdrawn. Public domain steel barrier systems are not to be used on new projects or installations within the TMR network. This drawing can be used for the purposes of maintaining existing installations when repairs and replacements can be reasonably and readily undertaken or if justified and certified by a RPEQ as an exception for new installation.

|                      |   |                                 |
|----------------------|---|---------------------------------|
| STEEL BEAM GUARDRAIL | Queensland Government<br>Department of Main Roads |                                 |
| TERMINAL COMPONENTS  | Size A3<br>Not to Scale                           | Drawing No<br>1476<br>Date 8/06 |