

Maritime Safety Queensland



Gold Coast Seaway

Beacon to Beacon Guide

Northern Gold Coast

Published by

Maritime Safety Queensland

© Copyright The State of Queensland
(Department of Transport and Main Roads) 2023



To view a copy of this licence, visit
<https://creativecommons.org/licenses/by/4.0/>

For commercial use terms and conditions

Please visit the Maritime Safety Queensland
website at www.msq.qld.gov.au

'How to' use this guide

Use this Beacon to Beacon Guide with
the 'How to' and legend booklet available from
www.msq.qld.gov.au



Queensland
Government

Marine rescue services

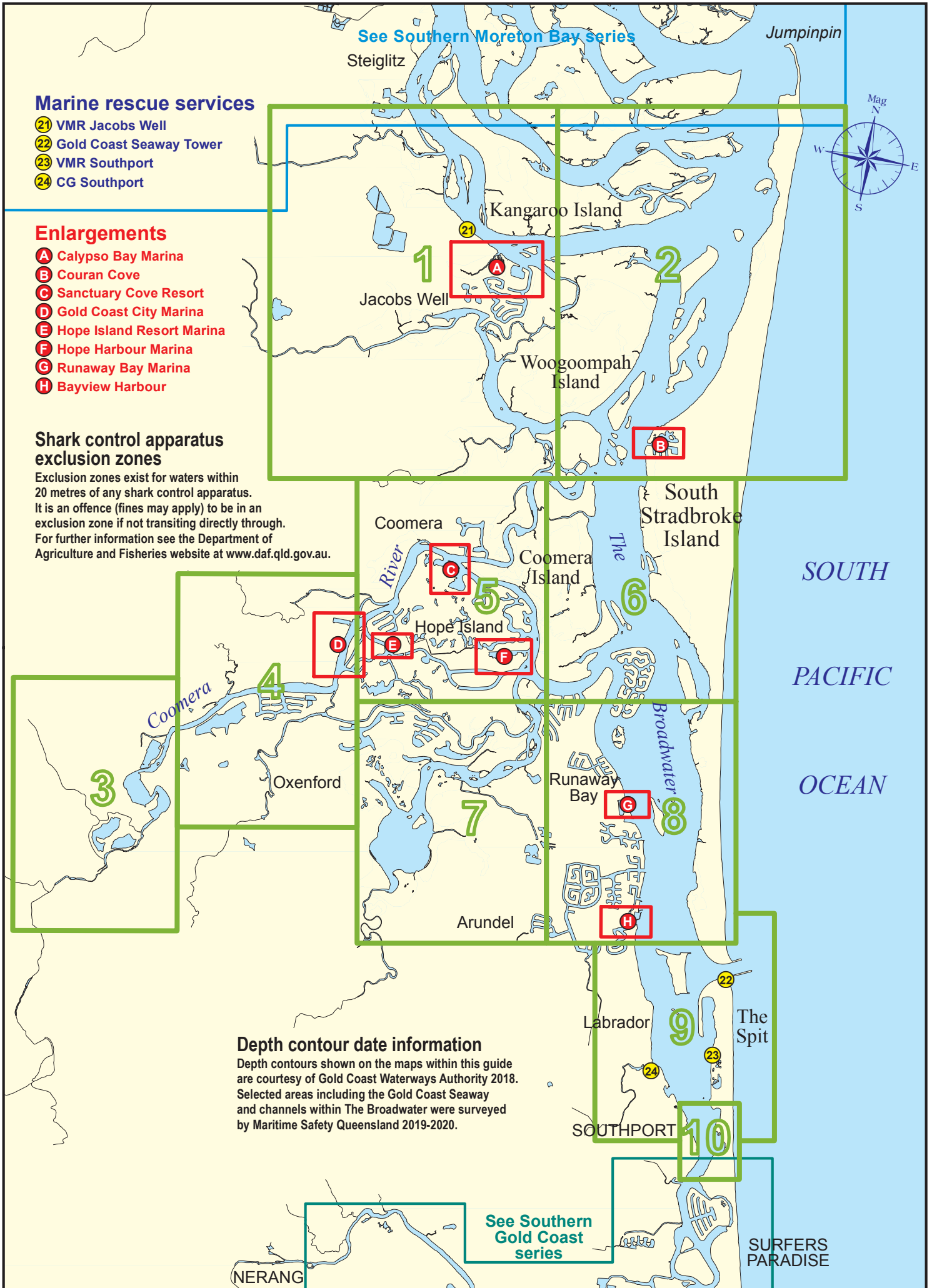
- 21 VMR Jacobs Well
- 22 Gold Coast Seaway Tower
- 23 VMR Southport
- 24 CG Southport

Enlargements

- A Calypso Bay Marina
- B Couran Cove
- C Sanctuary Cove Resort
- D Gold Coast City Marina
- E Hope Island Resort Marina
- F Hope Harbour Marina
- G Runaway Bay Marina
- H Bayview Harbour

Shark control apparatus exclusion zones

Exclusion zones exist for waters within 20 metres of any shark control apparatus. It is an offence (fines may apply) to be in an exclusion zone if not transiting directly through. For further information see the Department of Agriculture and Fisheries website at www.daf.qld.gov.au.



Depth contour date information

Depth contours shown on the maps within this guide are courtesy of Gold Coast Waterways Authority 2018. Selected areas including the Gold Coast Seaway and channels within The Broadwater were surveyed by Maritime Safety Queensland 2019-2020.



Always keep a proper lookout when boating. Nautical information current to 6 July 2020

Look up and live for power and cable crossings that may not be shown on these maps due to scale or recent construction.

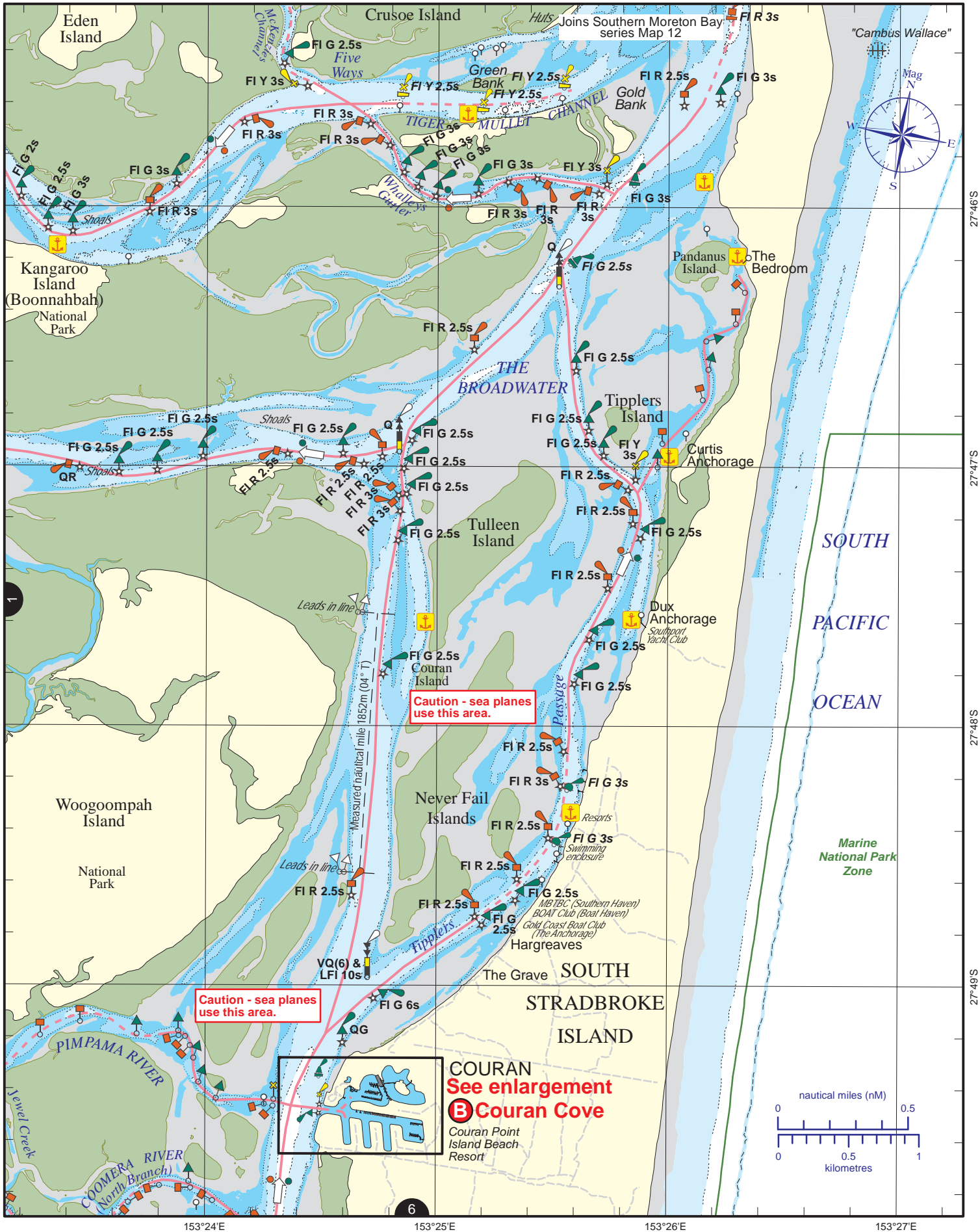
For depth contour date information, refer to the Key Sheet for this guide. Note that depths may change following floods.

Exercise care when travelling outside suggested navigation tracks.

© Copyright The State of Queensland 2020
 Queensland Department of Transport and Main Roads - Maritime Safety Queensland.
 To reproduce any map within this series, see terms and conditions at Maritime Safety Queensland's website (www.msq.qld.gov.au)

CC BY

Queensland Government



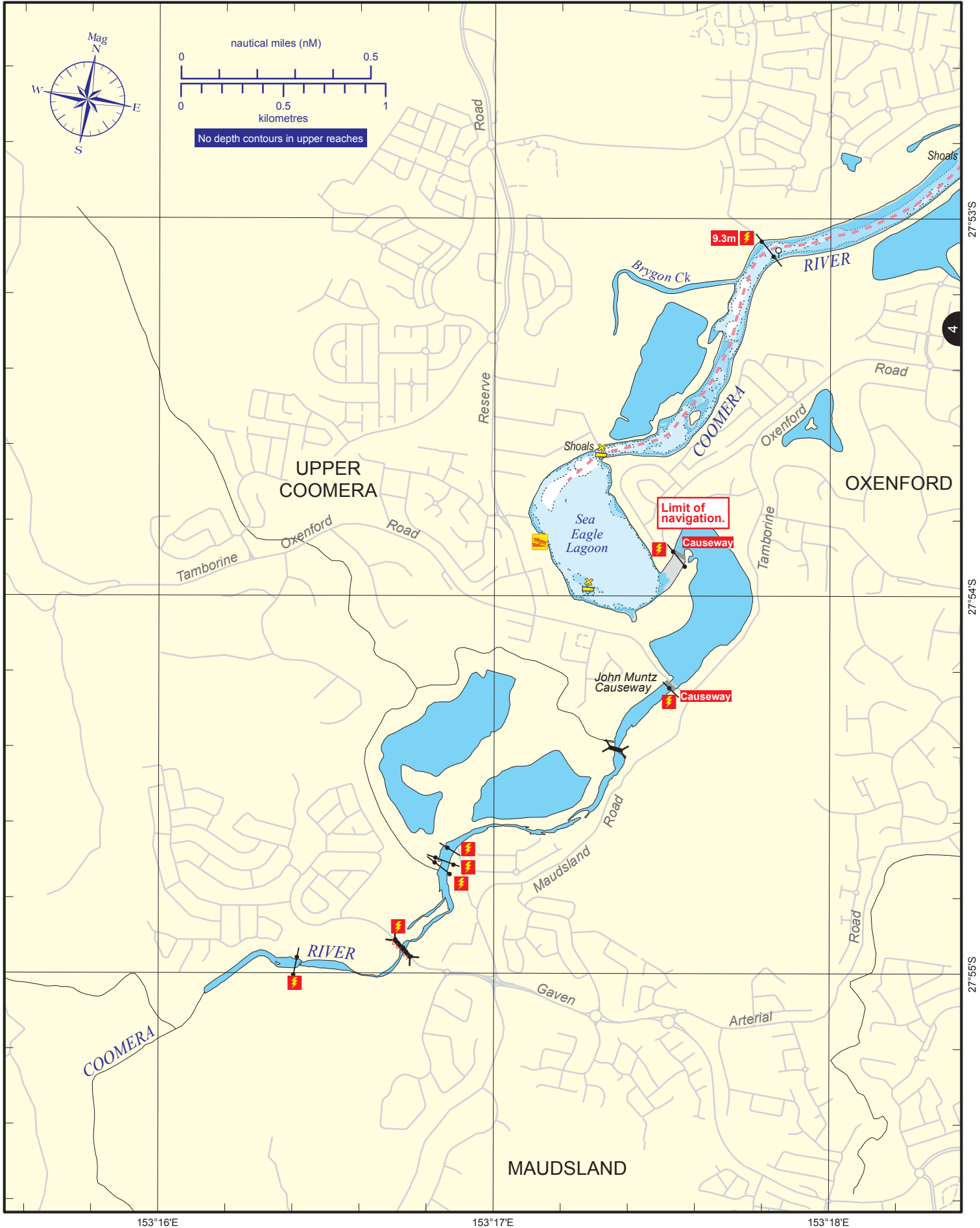
Always keep a proper lookout when boating.
Look up and live for power and cable crossings that may not be shown on these maps due to scale or recent construction.
 For depth contour date information, refer to the Key Sheet for this guide. Note that depths may change following floods.
Exercise care when travelling outside suggested navigation tracks.

Nautical information current to 6 July 2020

VMR Southport: base phone 5591 1300, 24 hrs 7 days, 27MHz 86 88 91, VHF 16 22 67 73 82, MF/HF 2182 2524 4125 4483.

CG Southport: base phone 5531 1421, Mon-Thu 0800-1800, 24 hrs w/e (Fri 0800-Sun 1800), 27MHz 91 88 86, VHF 73 21 22 67 81 82 16, MF/HF 2524.

NGC-3



Always keep a proper lookout when boating.

Look up and live for power and cable crossings that may not be shown on these maps due to scale or recent construction.

For depth contour date information, refer to the Key Sheet for this guide. Note that depths may change following floods.

Exercise care when travelling outside suggested navigation tracks.

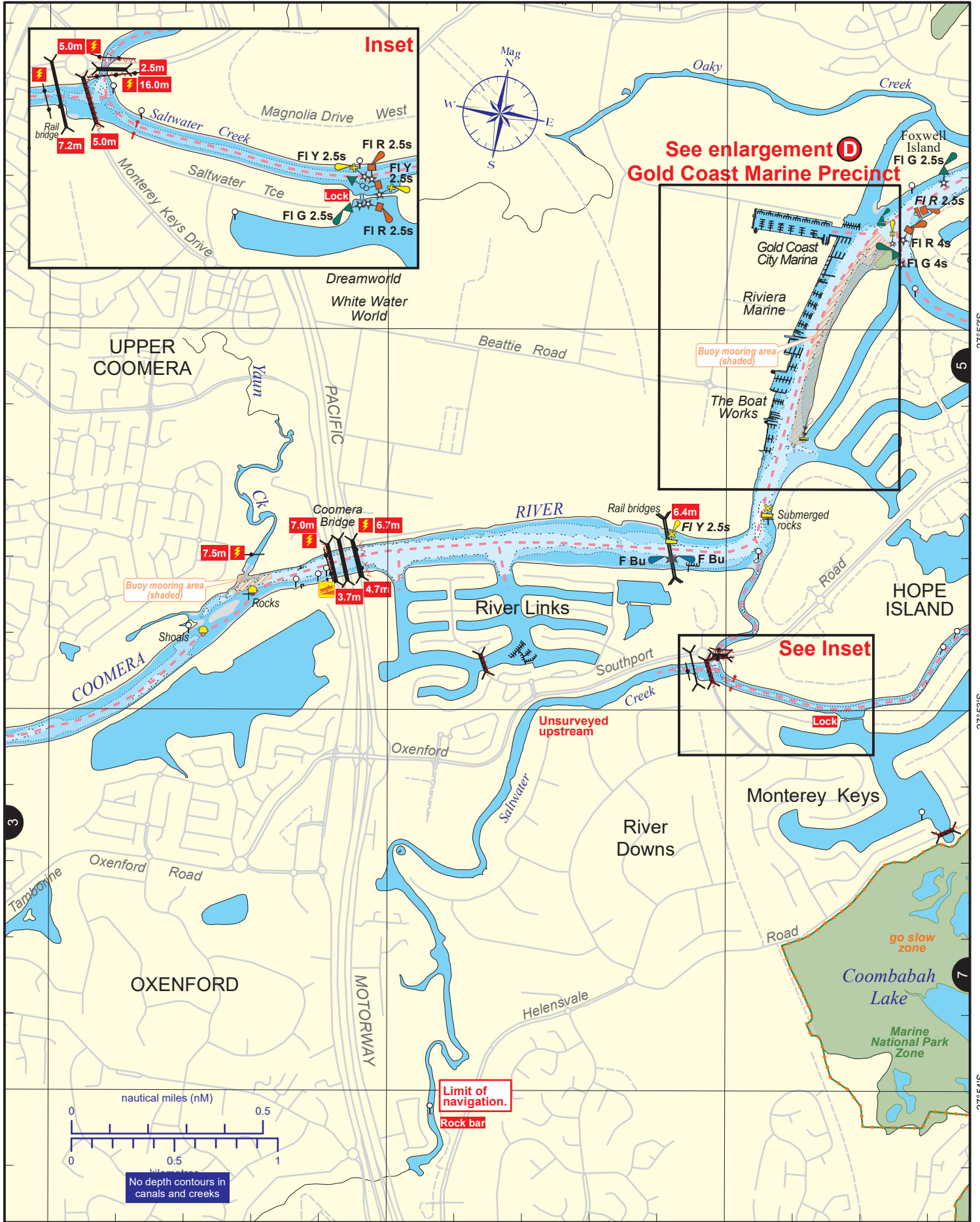
© Copyright The State of Queensland 2020

Queensland Department of Transport and Main Roads - Maritime Safety Queensland.

To reproduce any map within this series, see terms and conditions at Maritime Safety Queensland's website (www.msq.qld.gov.au)

Nautical information current to 6 July 2020





Always keep a proper lookout when boating.
Look up and live for power and cable crossings that may not be shown on these maps due to scale or recent construction.
 For depth contour date information, refer to the Key Sheet for this guide. Note that depths may change following floods.
Exercise care when travelling outside suggested navigation tracks.

Nautical information current to 21 March 2023

© Copyright The State of Queensland 2023
 Queensland Department of Transport and Main Roads - Maritime Safety Queensland.
 To reproduce any map within this series, see terms and conditions at Maritime Safety Queensland's website (www.msq.qld.gov.au)

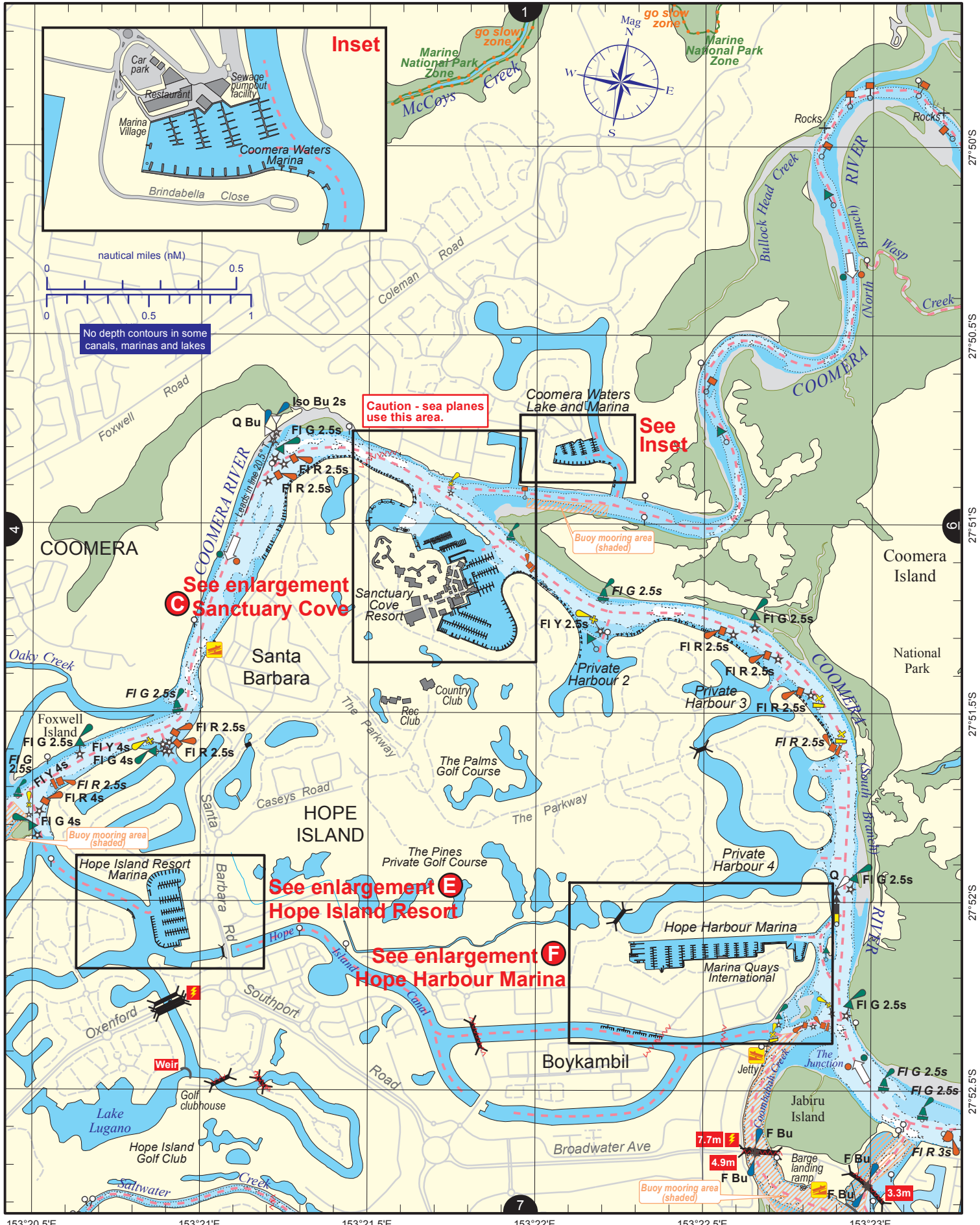
Queensland Government

VMR Jacobs Well: base phone 5546 1100, 24hrs 7 days, 27MHz 88 91, VHF 16 67 82, MF/HF 2112 2182 2201 2524 4125 6215.

VMR Southport: base phone 5591 1300, 24 hrs 7 days, 27MHz 86 88 91, VHF 16 22 67 73 82, MF/HF 2182 2524 4125 4483.

CG Southport: base phone 5531 1421, Mon-Thu 0800-1800, 24 hrs w/e (Fri 0800-Sun 1800), 27MHz 91 88 86, VHF 73 21 22 67 81 82 16, MF/HF 2524.

NGC-5





153°20.5'E 153°21'E 153°21.5'E 153°22'E 153°22.5'E 153°23'E 27°50.5'S 27°51.5'S 27°52.5'S

Always keep a proper lookout when boating.
Look up and live for power and cable crossings that may not be shown on these maps due to scale or recent construction.
For depth contour date information, refer to the Key Sheet for this guide. Note that depths may change following floods.
Exercise care when travelling outside suggested navigation tracks.

© Copyright The State of Queensland 2020
Queensland Department of Transport and Main Roads - Maritime Safety Queensland.
To reproduce any map within this series, see terms and conditions at Maritime Safety Queensland's website (www.msq.qld.gov.au)

Nautical information current to 6 July 2020



VMR Southport: base phone 5591 1300, 24 hrs 7 days, 27MHz 86 88 91, VHF 16 22 67 73 82, MF/HF 2182 2524 4125 4483.

CG Southport: base phone 5531 1421, Mon-Thu 0800-1800, 24 hrs w/e (Fri 0800-Sun 1800), 27MHz 91 88 86, VHF 73 21 22 67 81 82 16, MF/HF 2524.

NGC-7





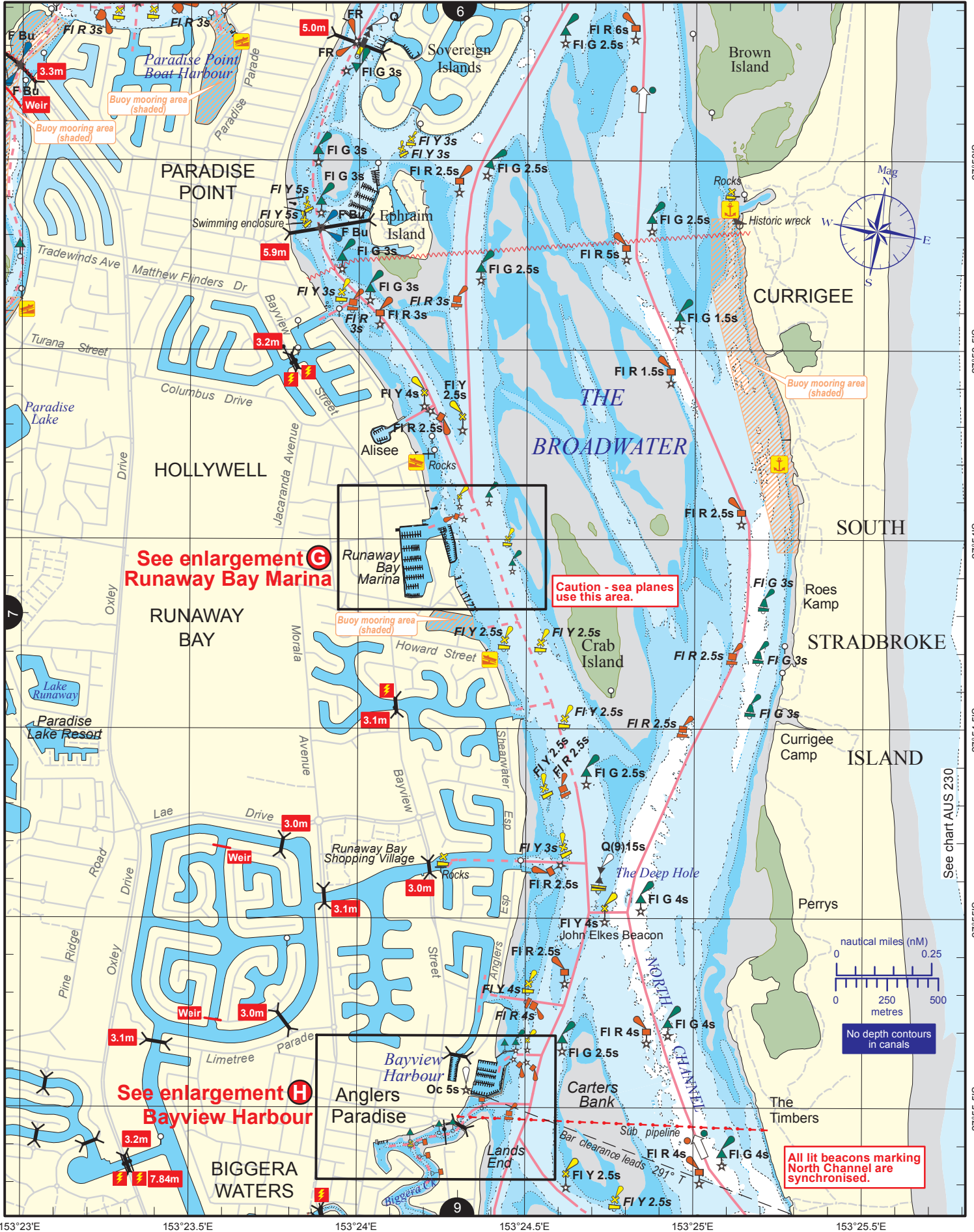
153°20.5'E 153°21'E 153°21.5'E 153°22'E 153°22.5'E 153°23'E

Always keep a proper lookout when boating.
Look up and live for power and cable crossings that may not be shown on these maps due to scale or recent construction.
For depth contour date information, refer to the Key Sheet for this guide. Note that depths may change following floods.
Exercise care when travelling outside suggested navigation tracks.

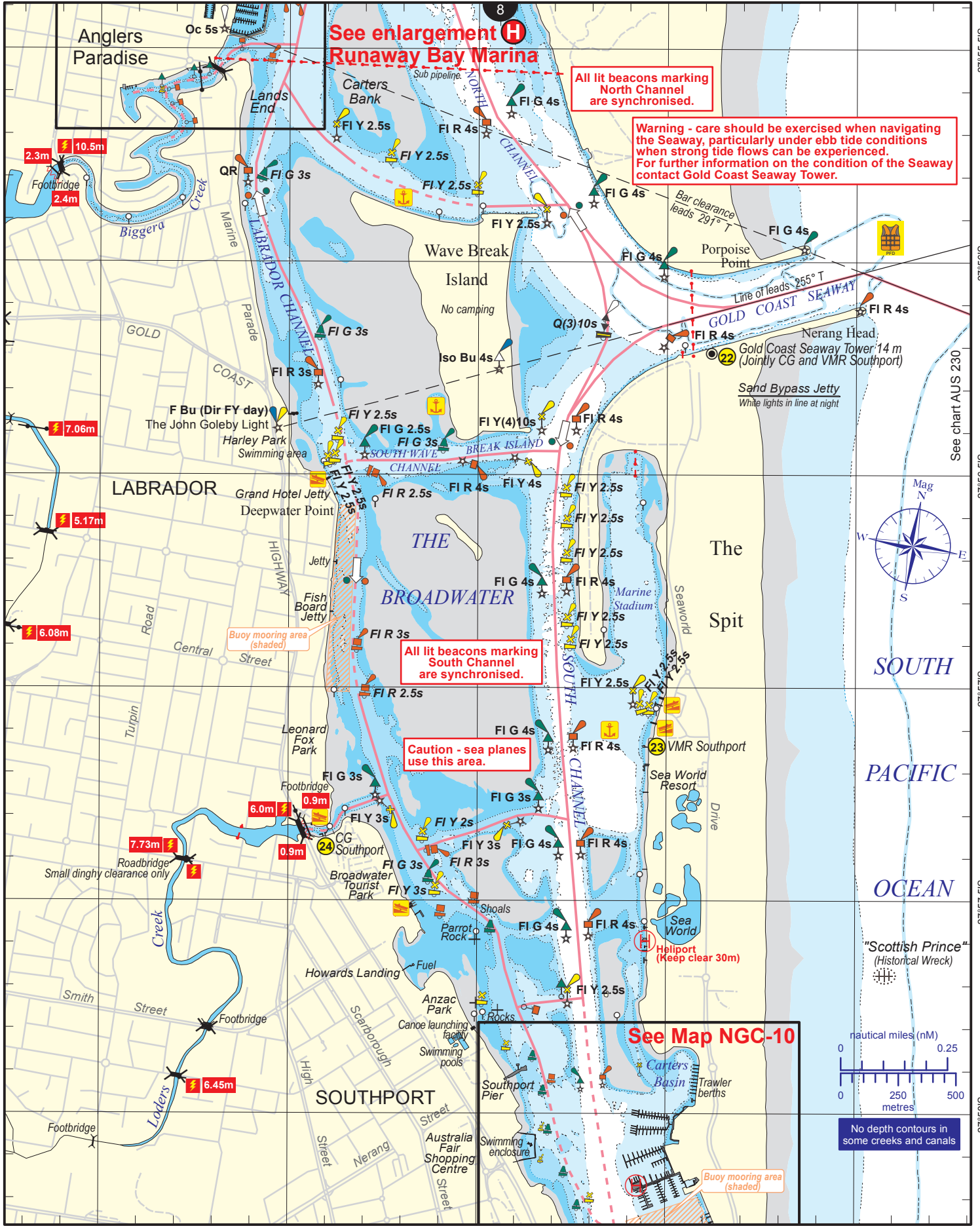
© Copyright The State of Queensland 2020
Queensland Department of Transport and Main Roads - Maritime Safety Queensland.
To reproduce any map within this series, see terms and conditions at Maritime Safety Queensland's website (www.msq.qld.gov.au)

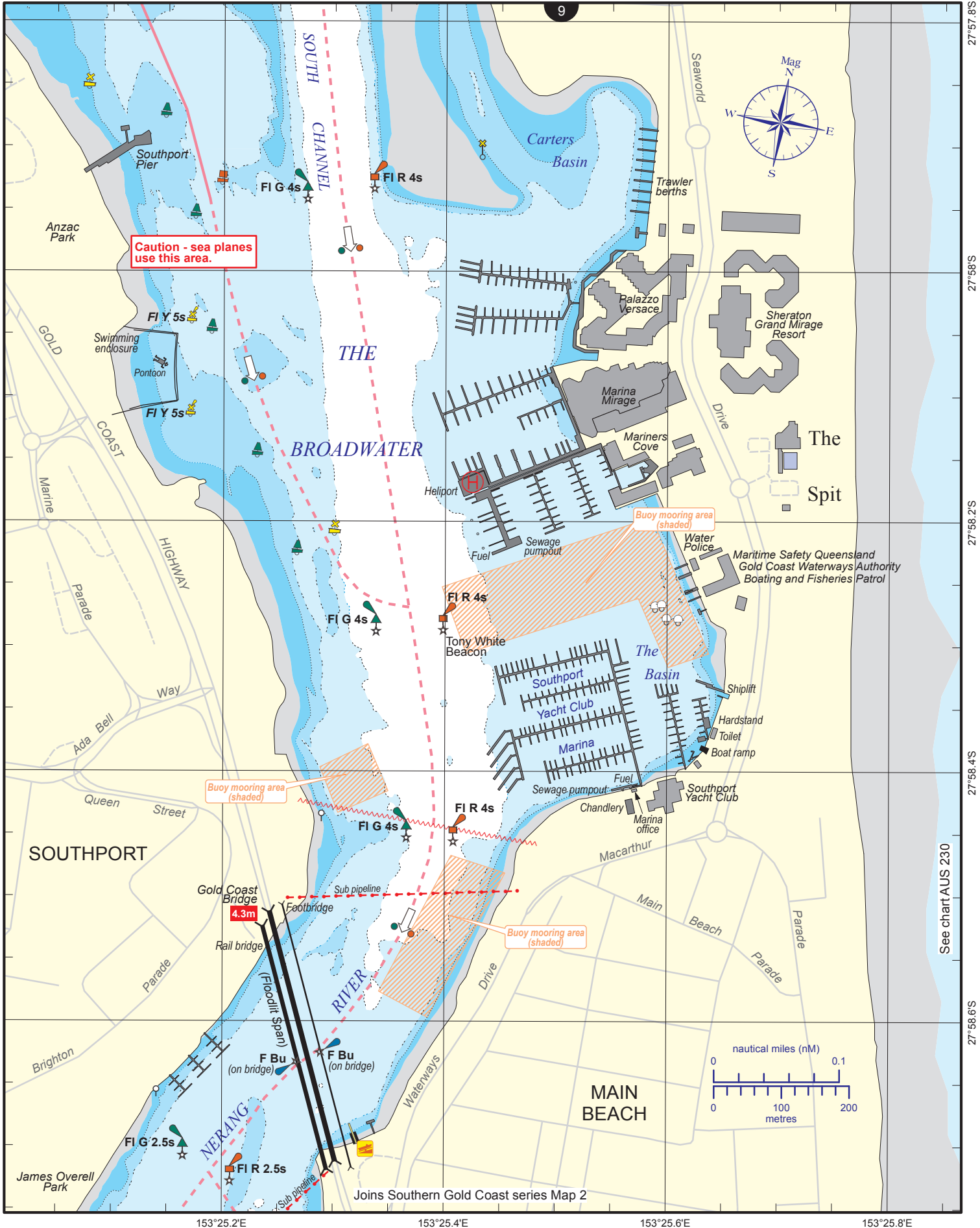
Nautical information current to 6 July 2020





153°23'E 153°23.5'E 153°24'E 153°24.5'E 153°25'E 153°25.5'E





Always keep a proper lookout when boating.

Look up and live for power and cable crossings that may not be shown on these maps due to scale or recent construction.

For depth contour date information, refer to the Key Sheet for this guide. Note that depths may change following floods.

Exercise care when travelling outside suggested navigation tracks.

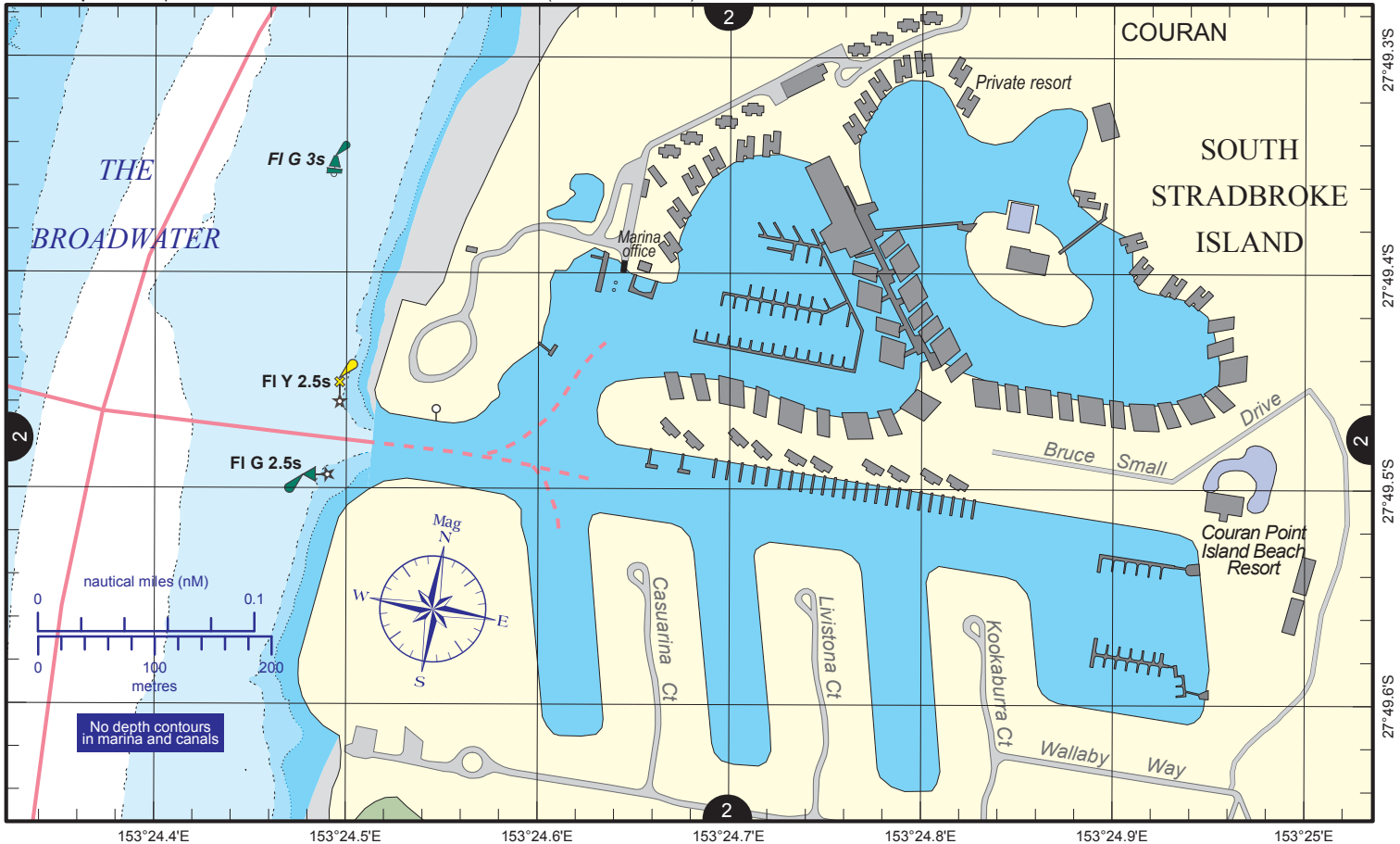
© Copyright The State of Queensland 2020

Queensland Department of Transport and Main Roads - Maritime Safety Queensland.

To reproduce any map within this series, see terms and conditions at Maritime Safety Queensland's website (www.msq.qld.gov.au)

Nautical information current to 6 July 2020





Always keep a proper lookout when boating.

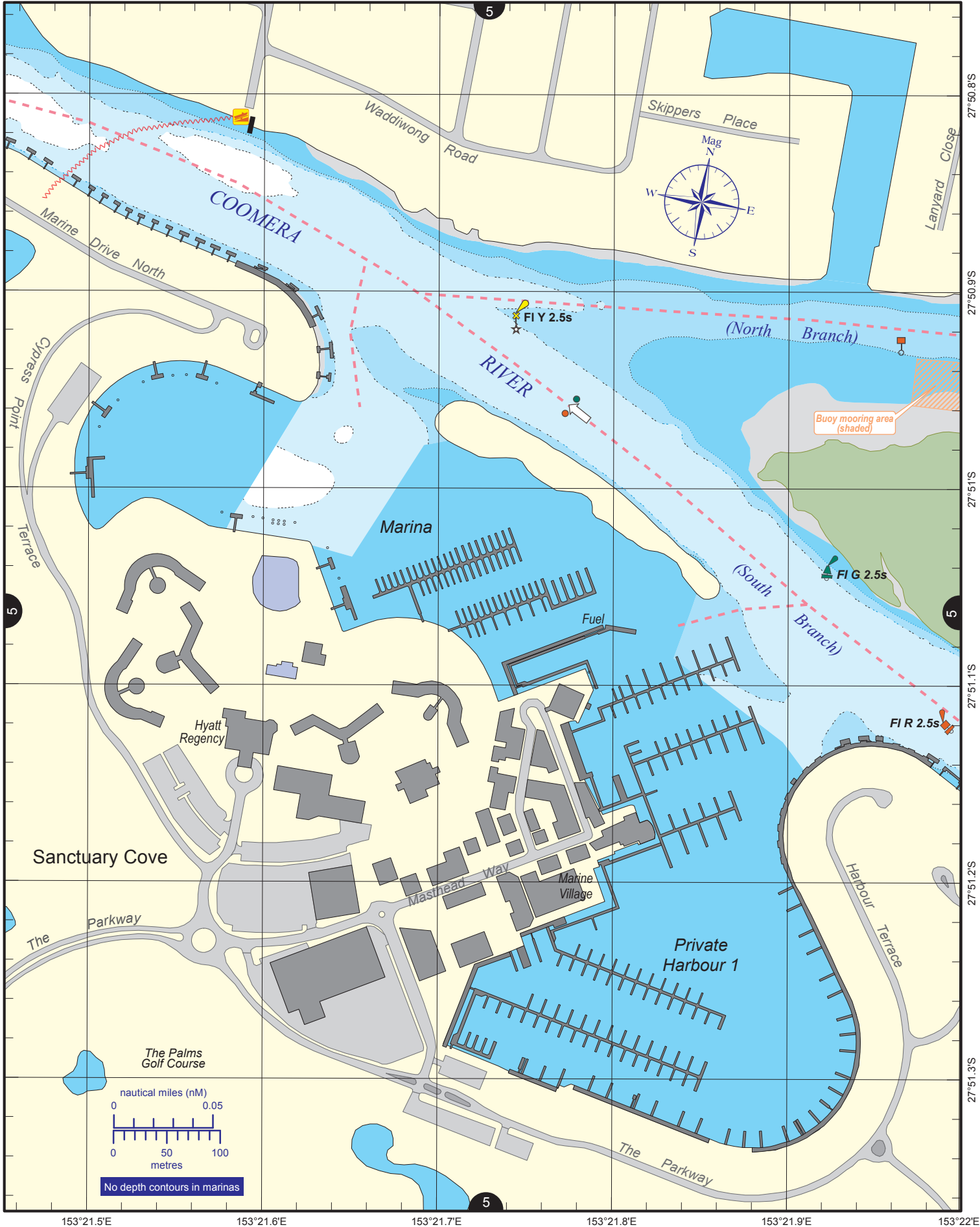
Nautical information current to 6 July 2020

Look up and live for power and cable crossings that may not be shown on these maps due to scale or recent construction.

For depth contour date information, refer to the Key Sheet for this guide. Note that depths may change following floods.

Exercise care when travelling outside suggested navigation tracks.





Always keep a proper lookout when boating.

Nautical information current to 6 July 2020

Look up and live for power and cable crossings that may not be shown on these maps due to scale or recent construction.

For depth contour date information, refer to the Key Sheet for this guide. Note that depths may change following floods.

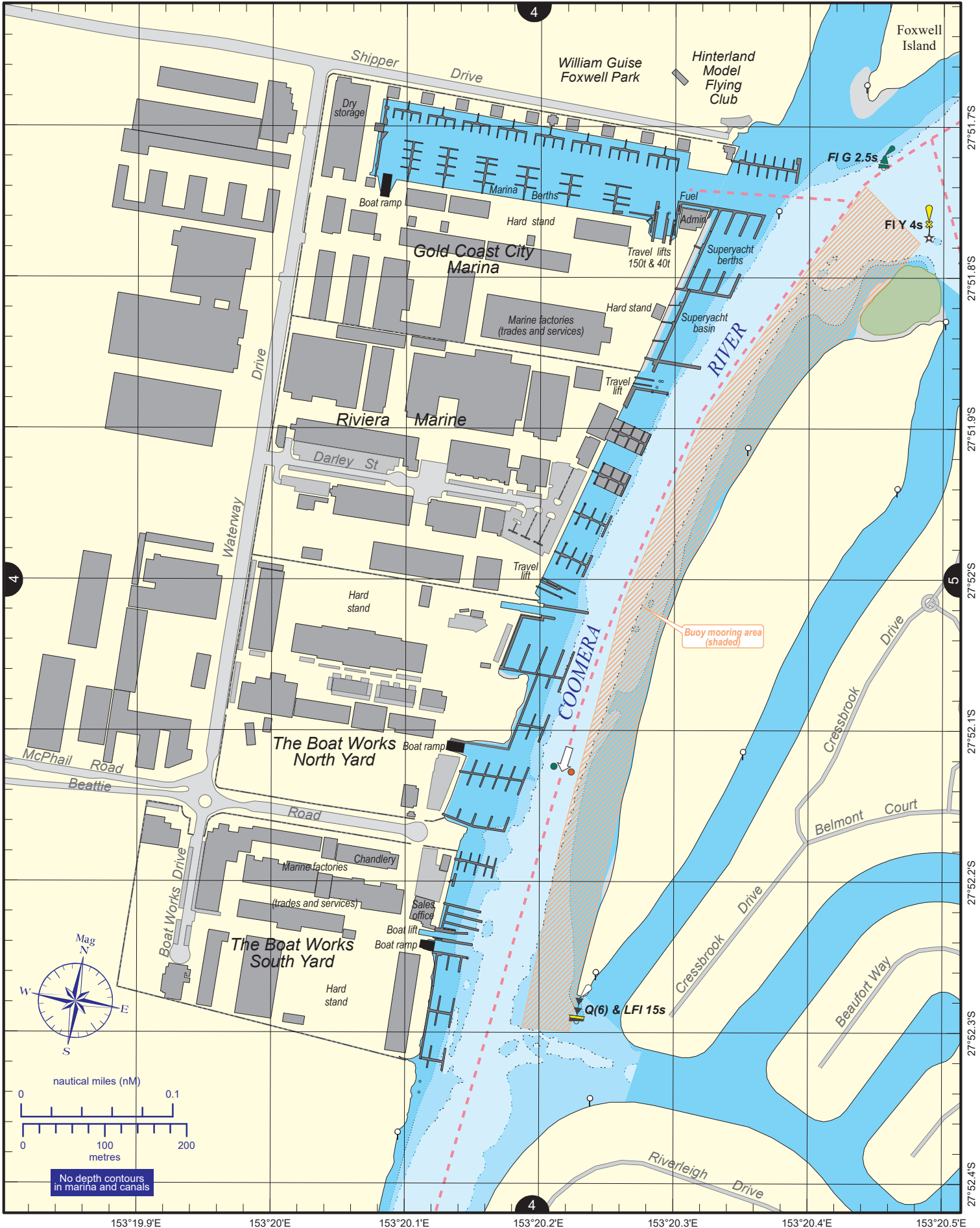
Exercise care when travelling outside suggested navigation tracks.

© Copyright The State of Queensland 2020

Queensland Department of Transport and Main Roads - Maritime Safety Queensland.

To reproduce any map within this series, see terms and conditions at Maritime Safety Queensland's website (www.msq.qld.gov.au)





Always keep a proper lookout when boating.

Look up and live for power and cable crossings that may not be shown on these maps due to scale or recent construction.

For depth contour date information, refer to the Key Sheet for this guide. Note that depths may change following floods.

Exercise care when travelling outside suggested navigation tracks.

Nautical information current to 21 March 2023

© Copyright The State of Queensland 2023

Queensland Department of Transport and Main Roads - Maritime Safety Queensland.

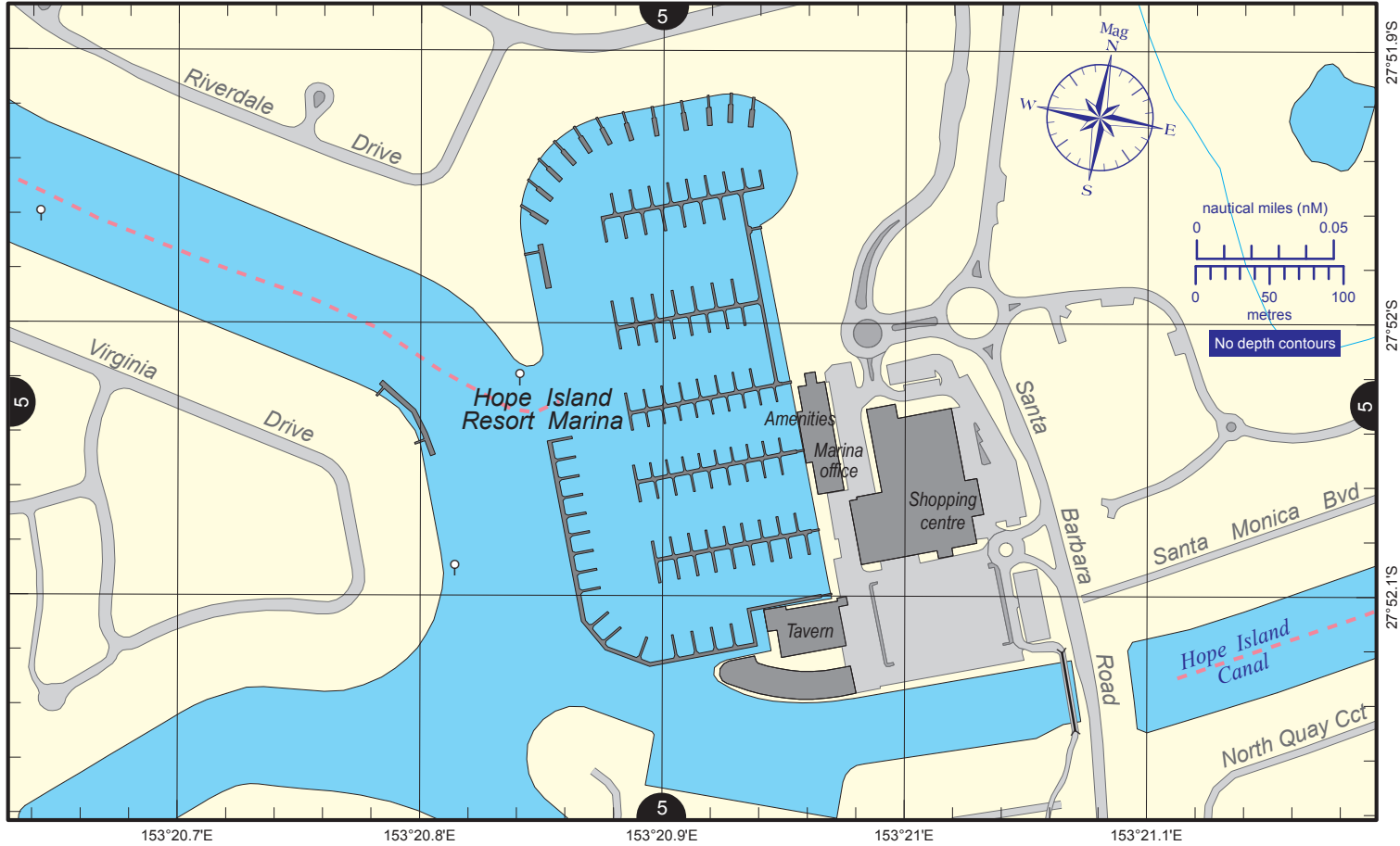
To reproduce any map within this series, see terms and conditions at Maritime Safety Queensland's website (www.msq.qld.gov.au)



VMR Southport: base phone 5591 1300, 24 hrs 7 days, 27MHz 86 88 91, VHF 16 22 67 73 82, MF/HF 2182 2524 4125 4483.

CG Southport: base phone 5531 1421, Mon-Thu 0800-1800, 24 hrs w/e (Fri 0800-Sun 1800), 27MHz 91 88 86, VHF 73 21 22 67 81 82 16, MF/HF 2524.

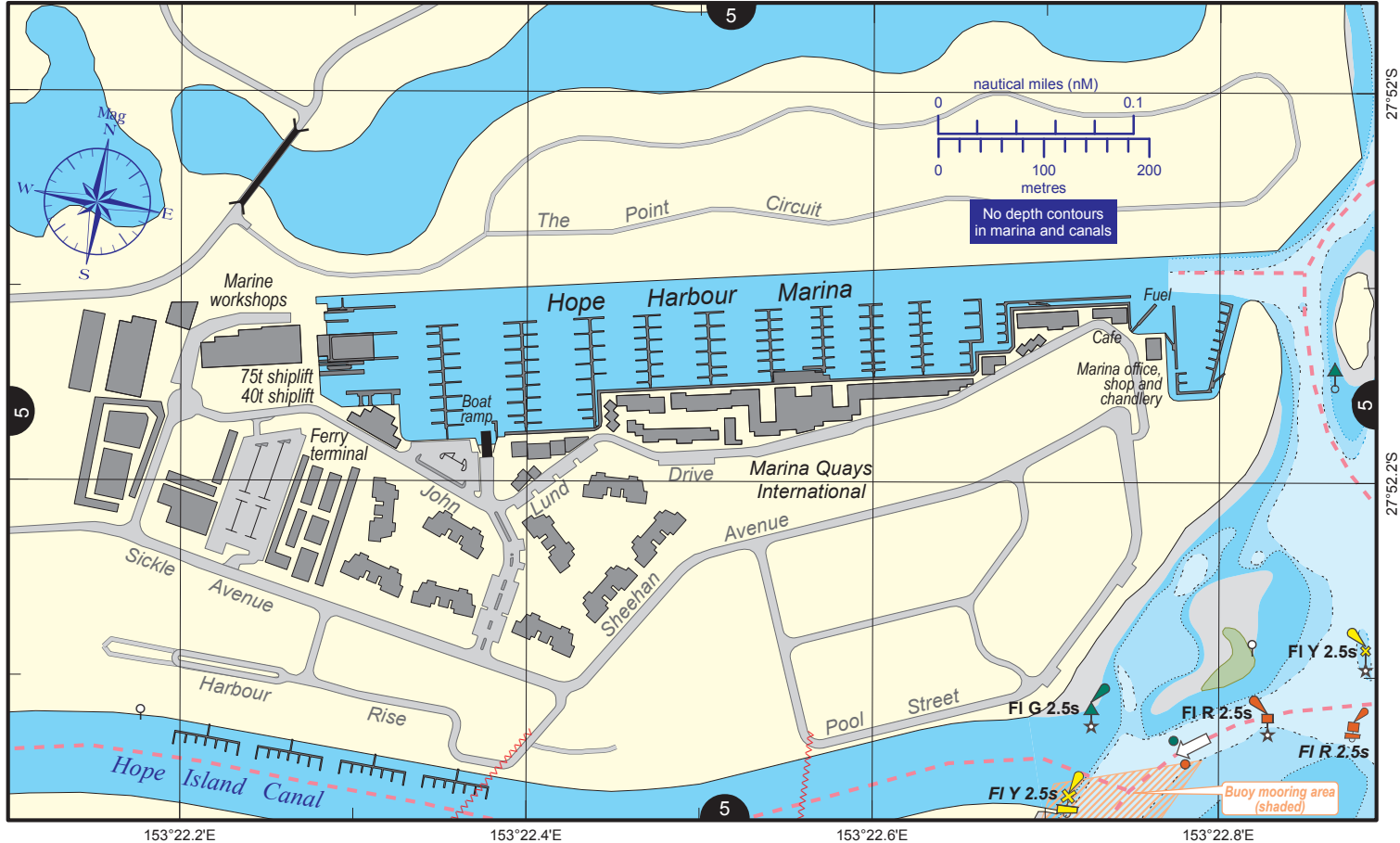
Hope Island Resort Marina



VMR Southport: base phone 5591 1300, 24 hrs 7 days, 27MHz 86 88 91, VHF 16 22 67 73 82, MF/HF 2182 2524 4125 4483.

CG Southport: base phone 5531 1421, Mon-Thu 0800-1800, 24 hrs w/e (Fri 0800-Sun 1800), 27MHz 91 88 86, VHF 73 21 22 67 81 82 16, MF/HF 2524.

Hope Harbour Marina



Always keep a proper lookout when boating.

Look up and live for power and cable crossings that may not be shown on these maps due to scale or recent construction.

For depth contour date information, refer to the Key Sheet for this guide. Note that depths may change following floods.

Exercise care when travelling outside suggested navigation tracks.

Nautical information current to 6 July 2020

© Copyright The State of Queensland 2020

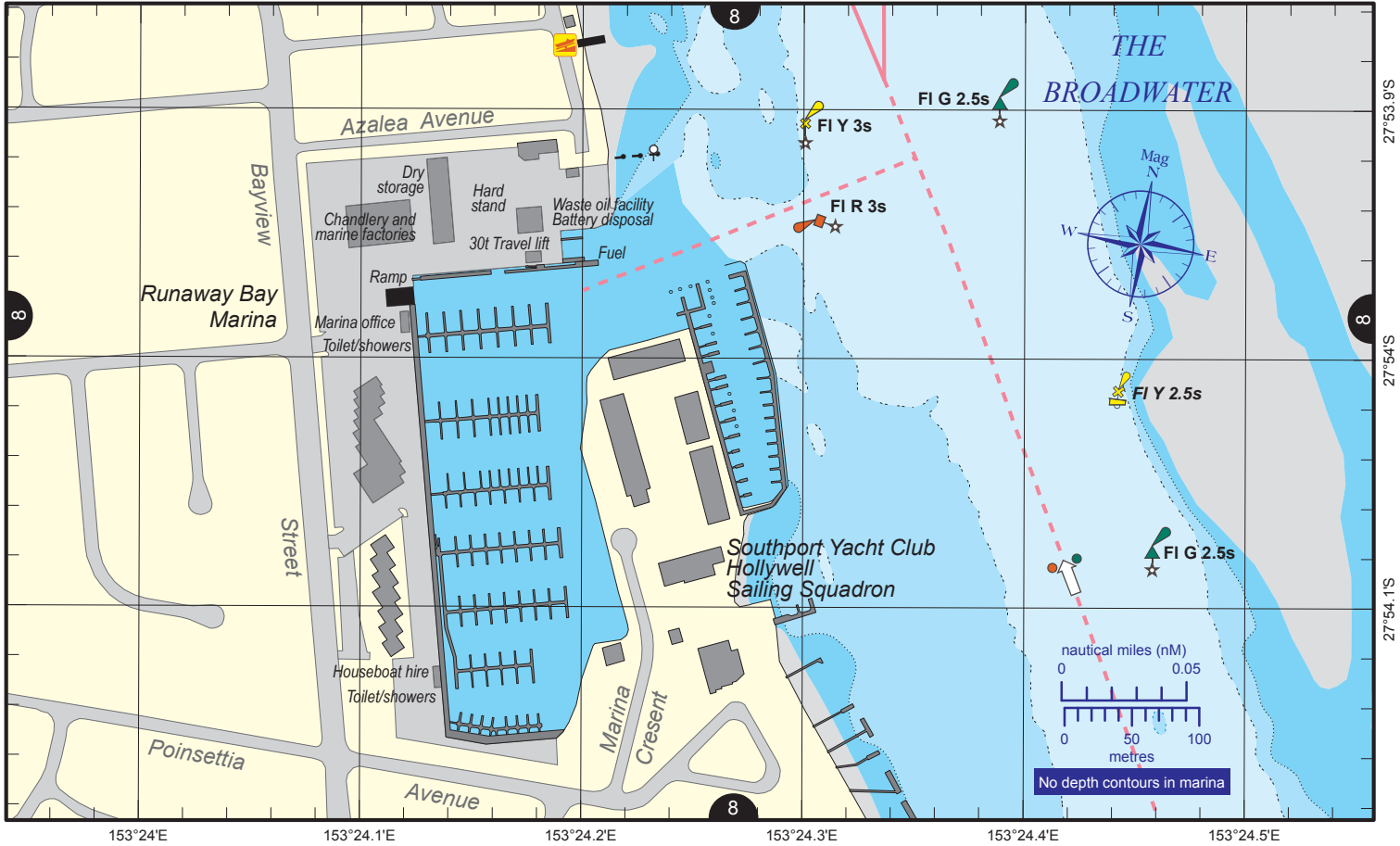
Queensland Department of Transport and Main Roads - Maritime Safety Queensland.

To reproduce any map within this series, see terms and conditions at Maritime Safety Queensland's website (www.msq.qld.gov.au)



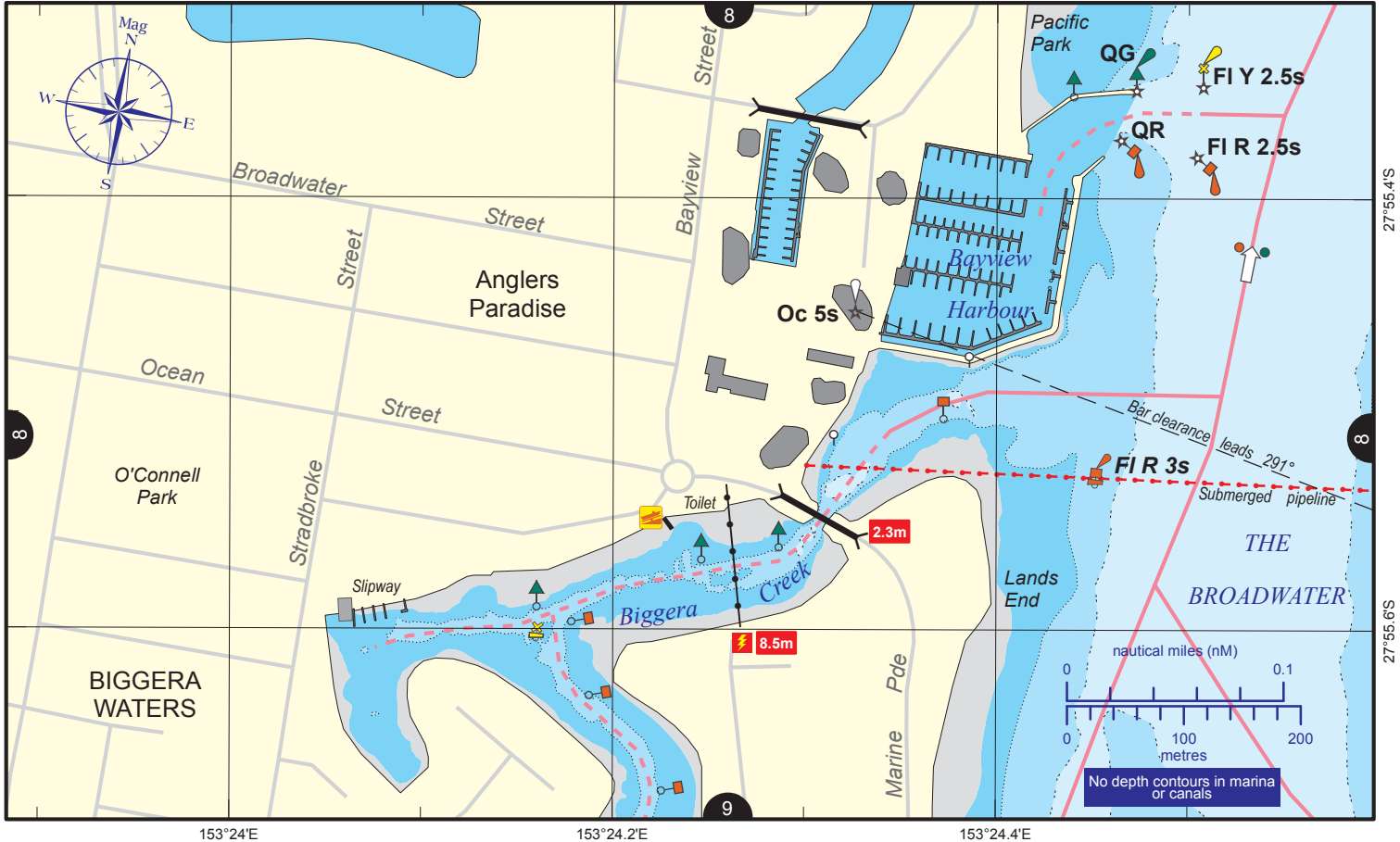
VMR Southport: base phone 5591 1300, 24 hrs 7 days, 27MHz 86 88 91, VHF 16 22 67 73 82, MF/HF 2182 2524 4125 4483.

CG Southport: base phone 5531 1421, Mon-Thu 0800-1800, 24 hrs w/e (Fri 0800-Sun 1800), 27MHz 91 88 86, VHF 73 21 22 67 81 82 16, MF/HF 2524.



VMR Southport: base phone 5591 1300, 24 hrs 7 days, 27MHz 86 88 91, VHF 16 22 67 73 82, MF/HF 2182 2524 4125 4483.

CG Southport: base phone 5531 1421, Mon-Thu 0800-1800, 24 hrs w/e (Fri 0800-Sun 1800), 27MHz 91 88 86, VHF 73 21 22 67 81 82 16, MF/HF 2524.



Always keep a proper lookout when boating.

Look up and live for power and cable crossings that may not be shown on these maps due to scale or recent construction.

For depth contour date information, refer to the Key Sheet for this guide. Note that depths may change following floods.

Exercise care when travelling outside suggested navigation tracks.

Nautical information current to 6 July 2020

© Copyright The State of Queensland 2020

Queensland Department of Transport and Main Roads - Maritime Safety Queensland.

To reproduce any map within this series, see terms and conditions at Maritime Safety Queensland's website (www.msq.qld.gov.au)

