

Maritime Safety Queensland



Gold Coast Bridge, Nerang River

Beacon to Beacon Guide

Southern Gold Coast

Published by

Maritime Safety Queensland

© Copyright The State of Queensland
(Department of Transport and Main Roads) 2019



To view a copy of this licence, visit
<https://creativecommons.org/licenses/by/4.0/>

For commercial use terms and conditions

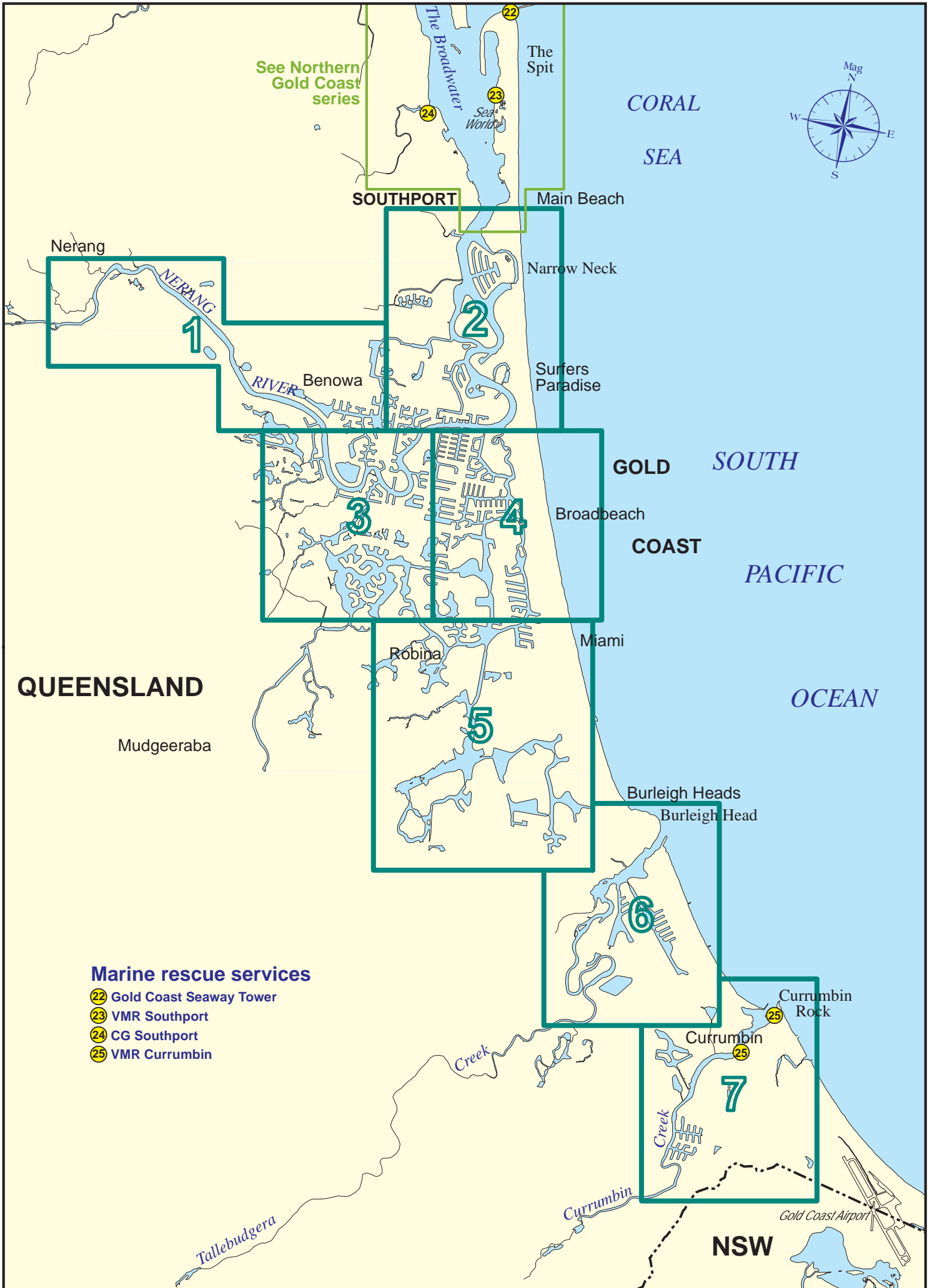
Please visit the Maritime Safety Queensland website at www.msq.qld.gov.au

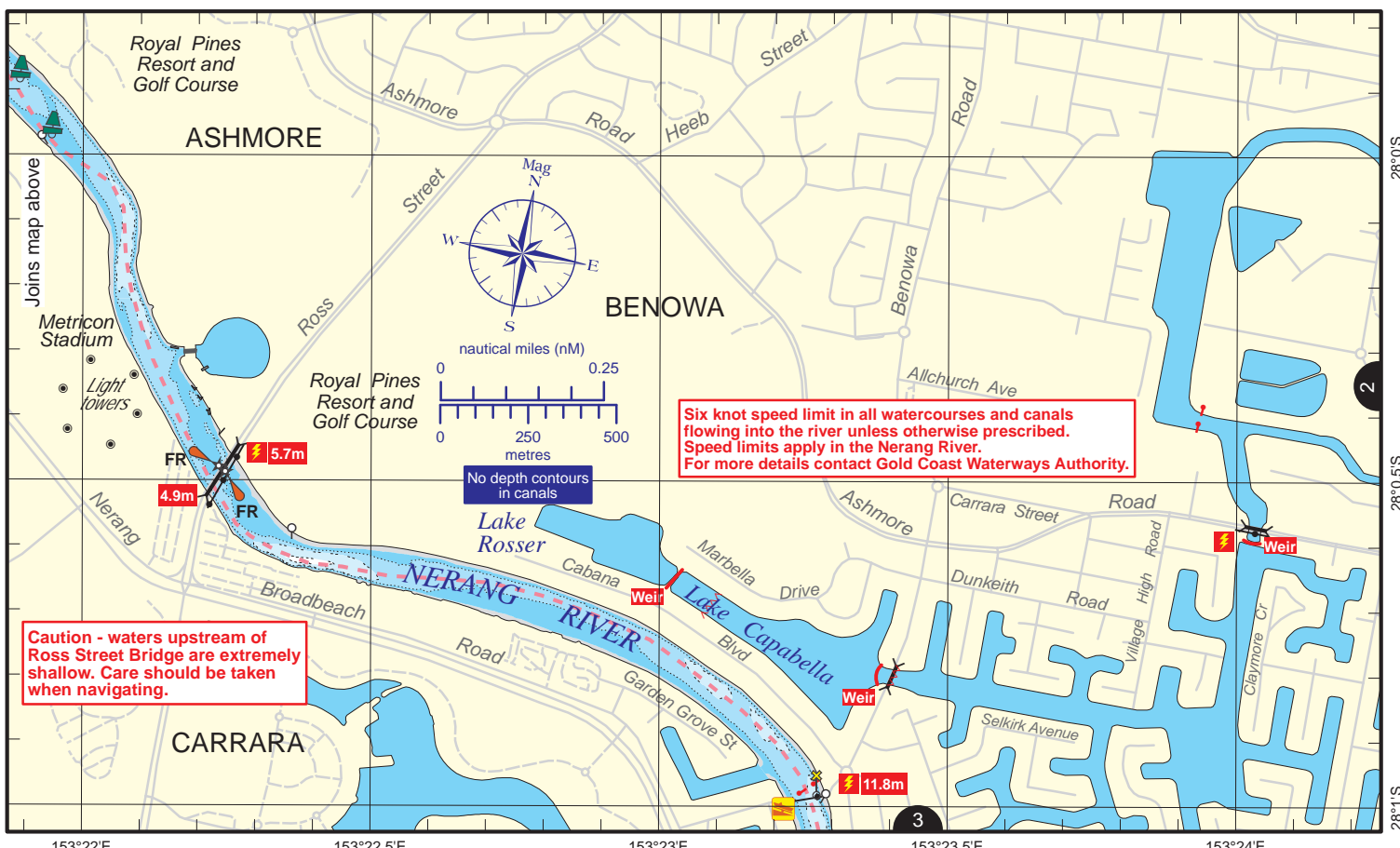
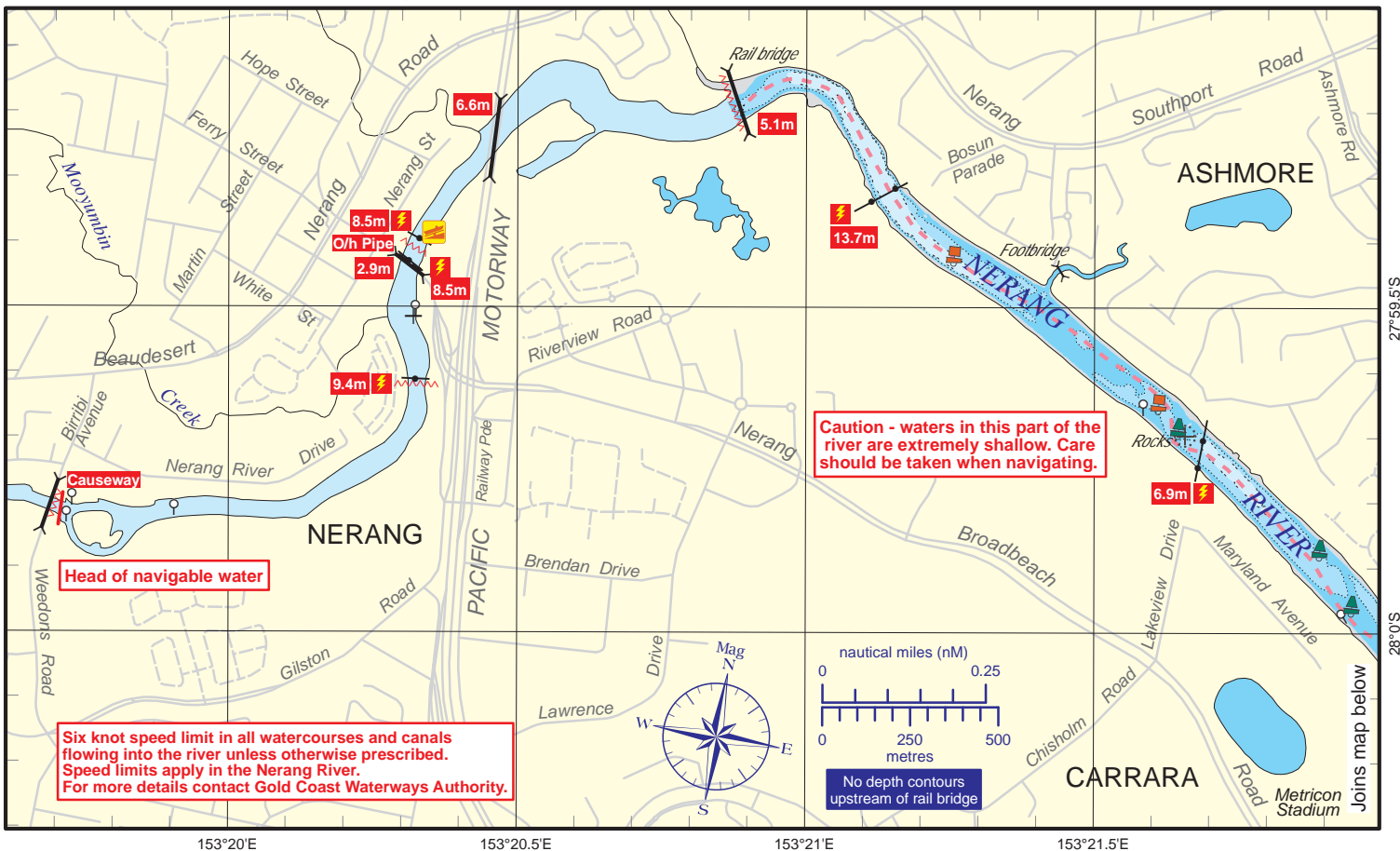
'How to' use this guide

Use this Beacon to Beacon Guide with the 'How to' and legend booklet available from www.msq.qld.gov.au



**Queensland
Government**



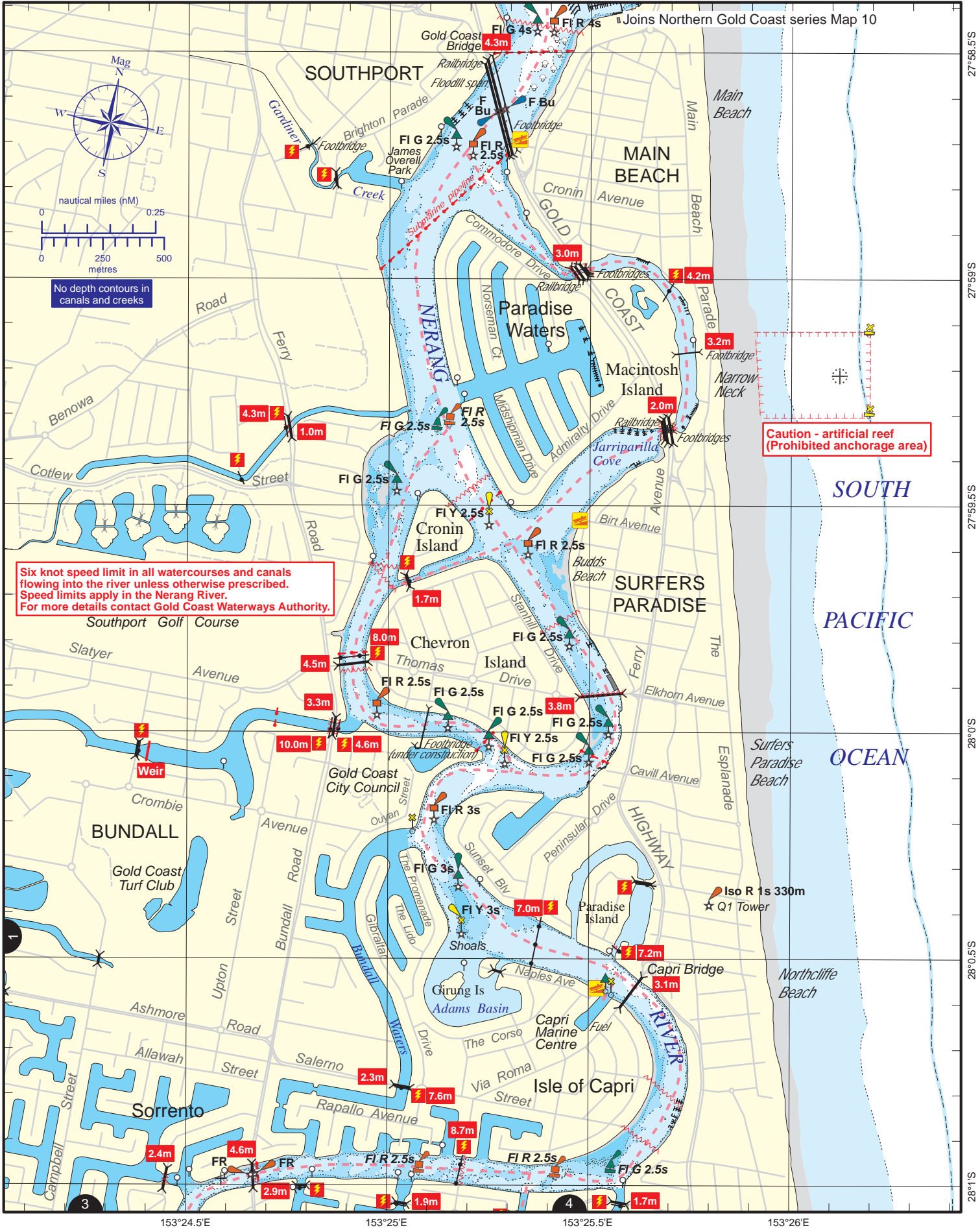


Always keep a proper lookout when boating.
Look up and live for power and cable crossings that may not be shown on these maps due to scale or recent construction.
CAUTION: depth contours have not been re-surveyed in most areas since the 2011 and 2013 floods.
Exercise care when travelling outside suggested navigation tracks.

Nautical information current to 3 June 2019

© Copyright The State of Queensland 2019
 Queensland Department of Transport and Main Roads - Maritime Safety Queensland.
 To reproduce any map within this series, see terms and conditions at Maritime Safety Queensland's website (www.msq.qld.gov.au)



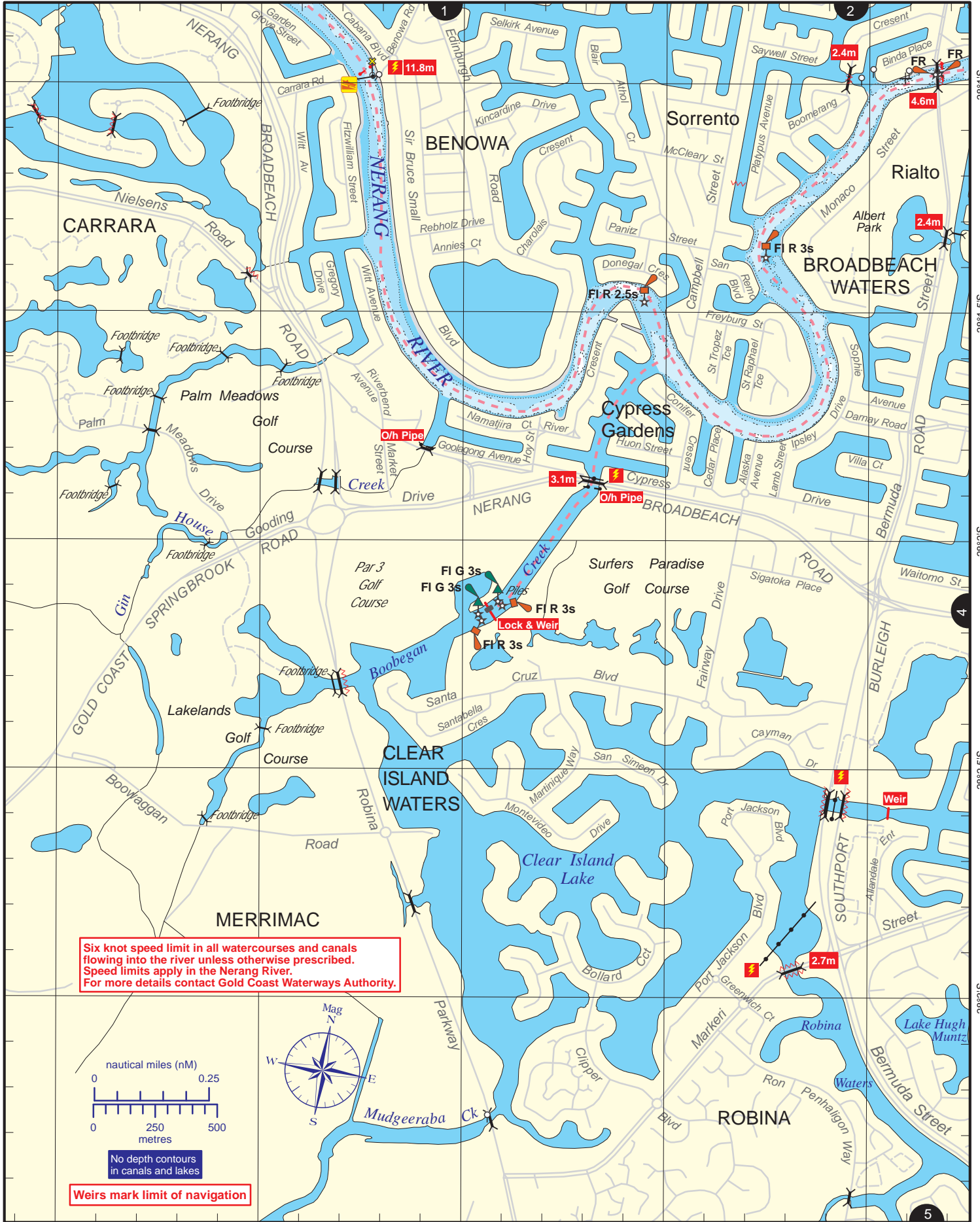
Always keep a proper lookout when boating.
Look up and live for power and cable crossings that may not be shown on these maps due to scale or recent construction.
CAUTION: depth contours have not been re-surveyed in most areas since the 2011 and 2013 floods.
 Exercise care when travelling outside suggested navigation tracks.

Nautical information current to 3 June 2019

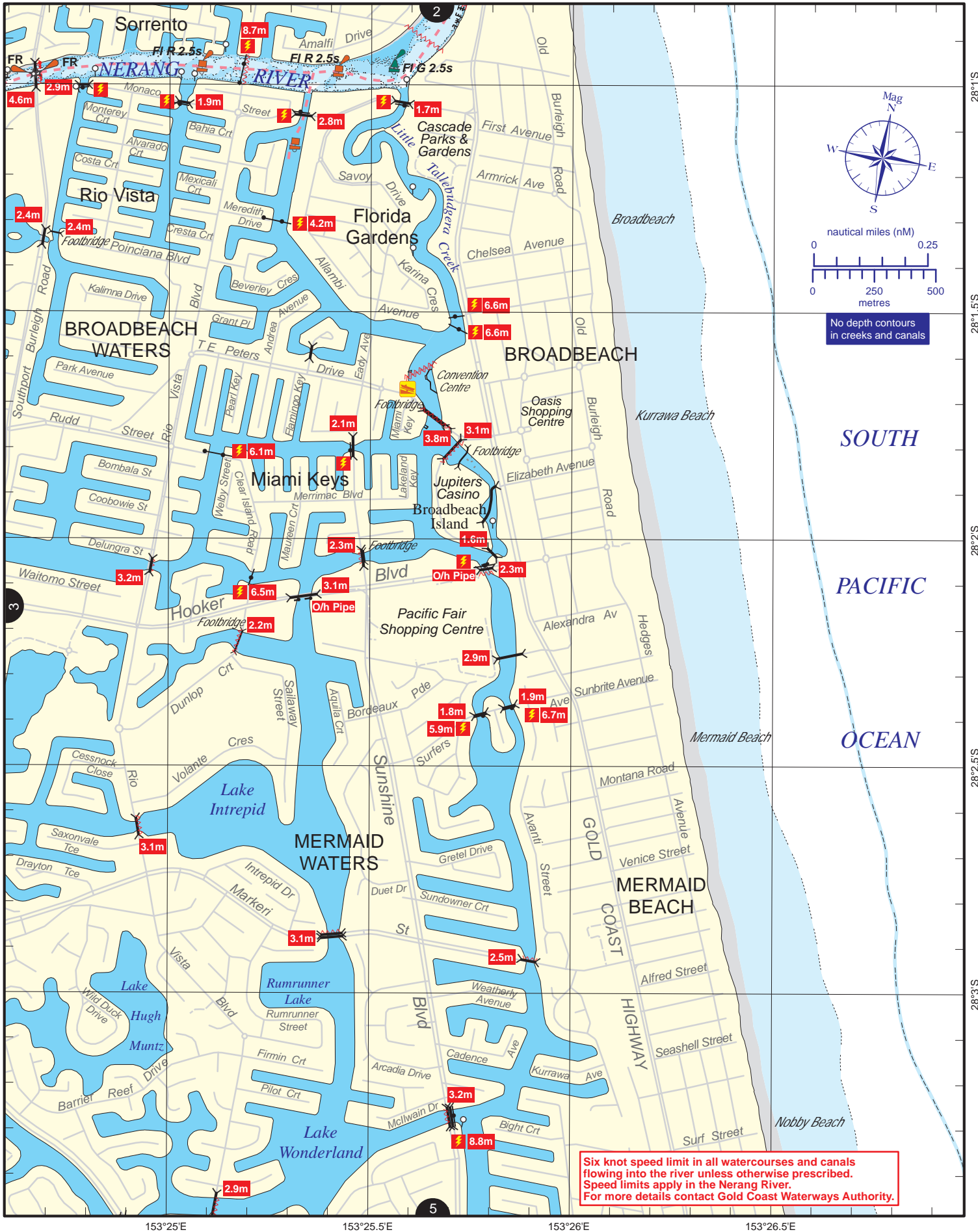
© Copyright The State of Queensland 2019
 Queensland Department of Transport and Main Roads - Maritime Safety Queensland.
 To reproduce any map within this series, see terms and conditions at Maritime Safety Queensland's website (www.msq.qld.gov.au)

CC BY

Queensland Government



153°22.5'E 153°23'E 153°23.5'E 153°24'E 153°24.5'E

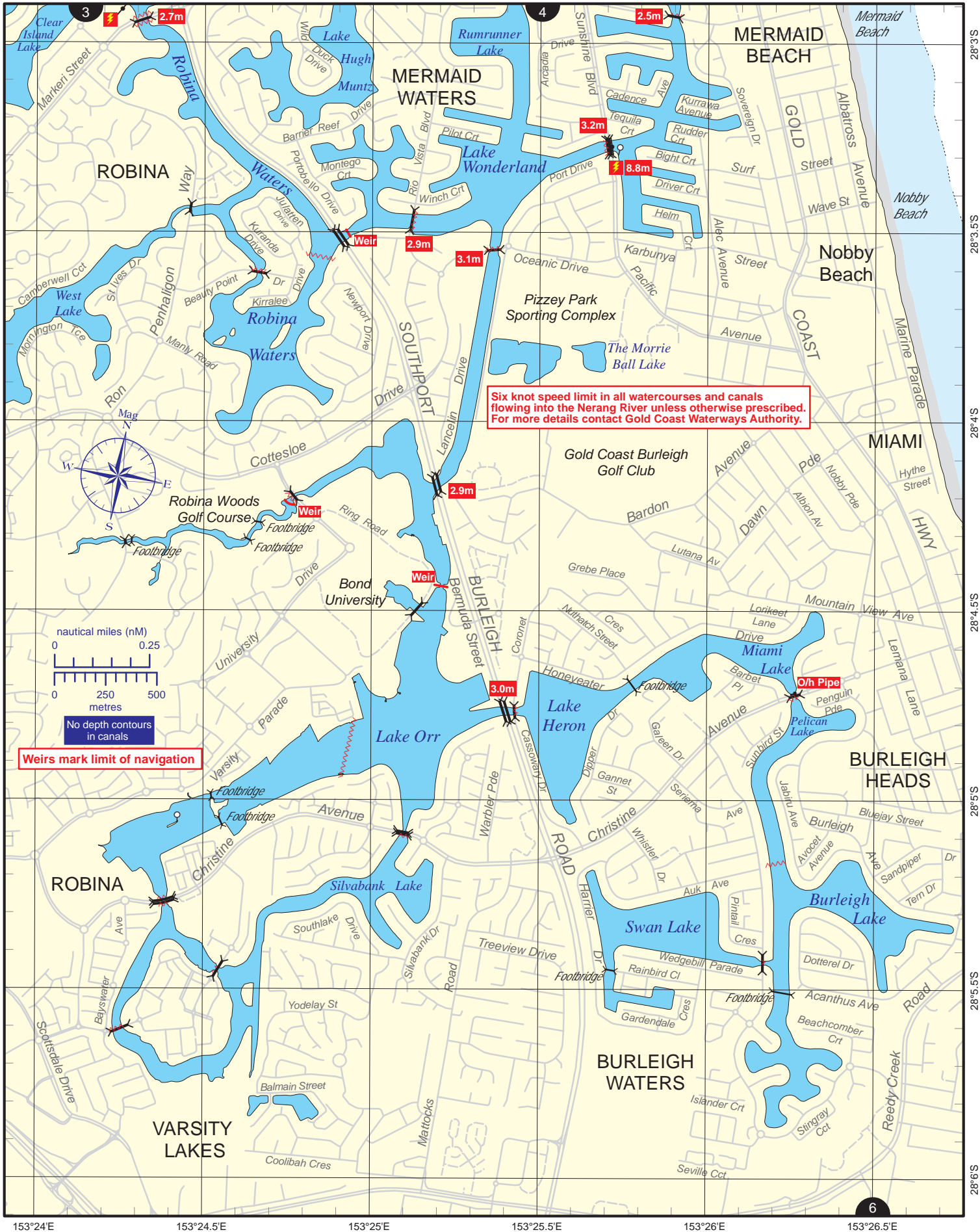


Always keep a proper lookout when boating.
 Look up and live for power and cable crossings that may not be shown on these maps due to scale or recent construction.
CAUTION: depth contours have not been re-surveyed in most areas since the 2011 and 2013 floods.
 Exercise care when travelling outside suggested navigation tracks.

Nautical information current to 3 June 2019

© Copyright The State of Queensland 2019
 Queensland Department of Transport and Main Roads - Maritime Safety Queensland.
 To reproduce any map within this series, see terms and conditions at Maritime Safety Queensland's website (www.msq.qld.gov.au)

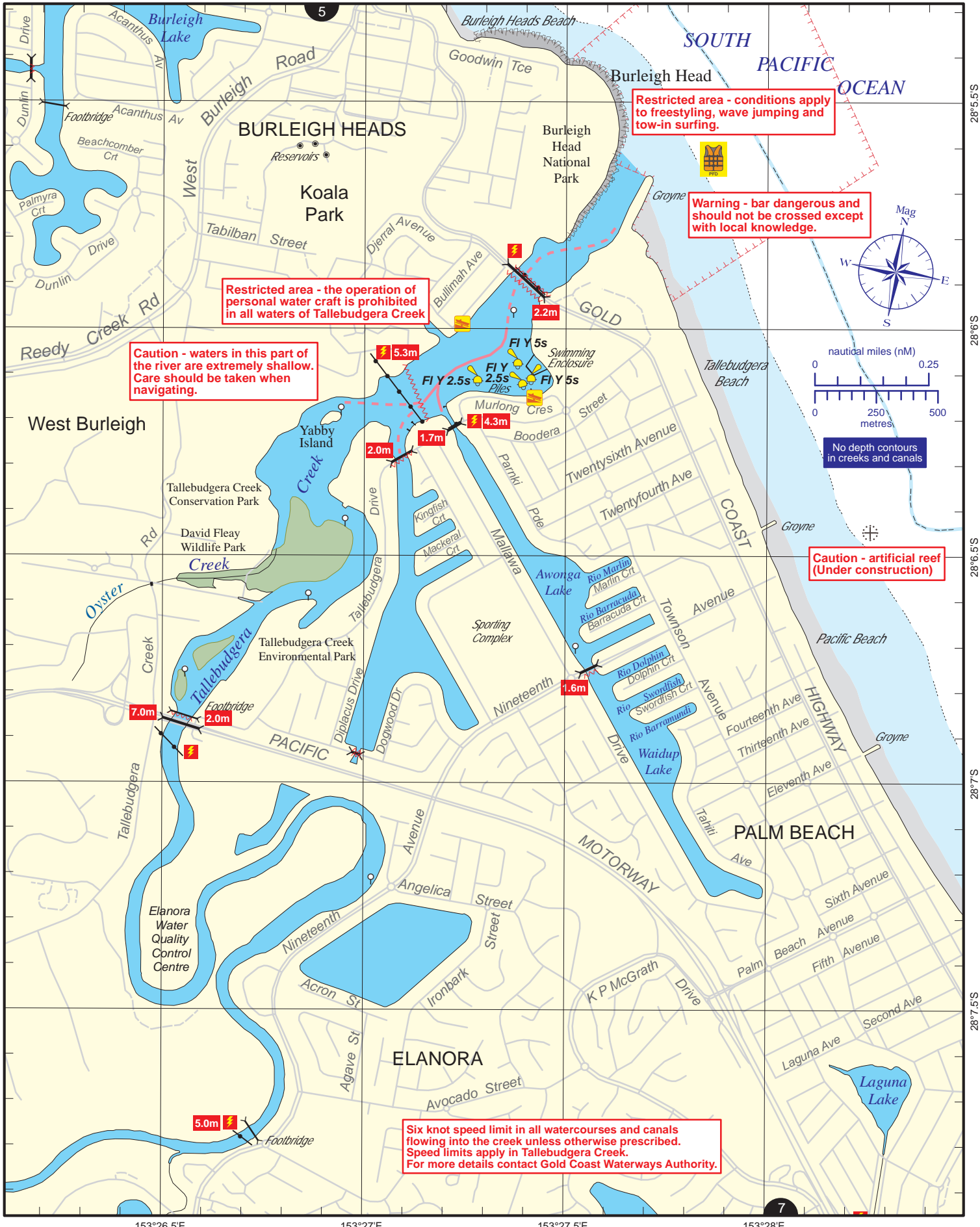
Queensland Government



Six knot speed limit in all watercourses and canals flowing into the Nerang River unless otherwise prescribed. For more details contact Gold Coast Waterways Authority.

Weirs mark limit of navigation

No depth contours in canals



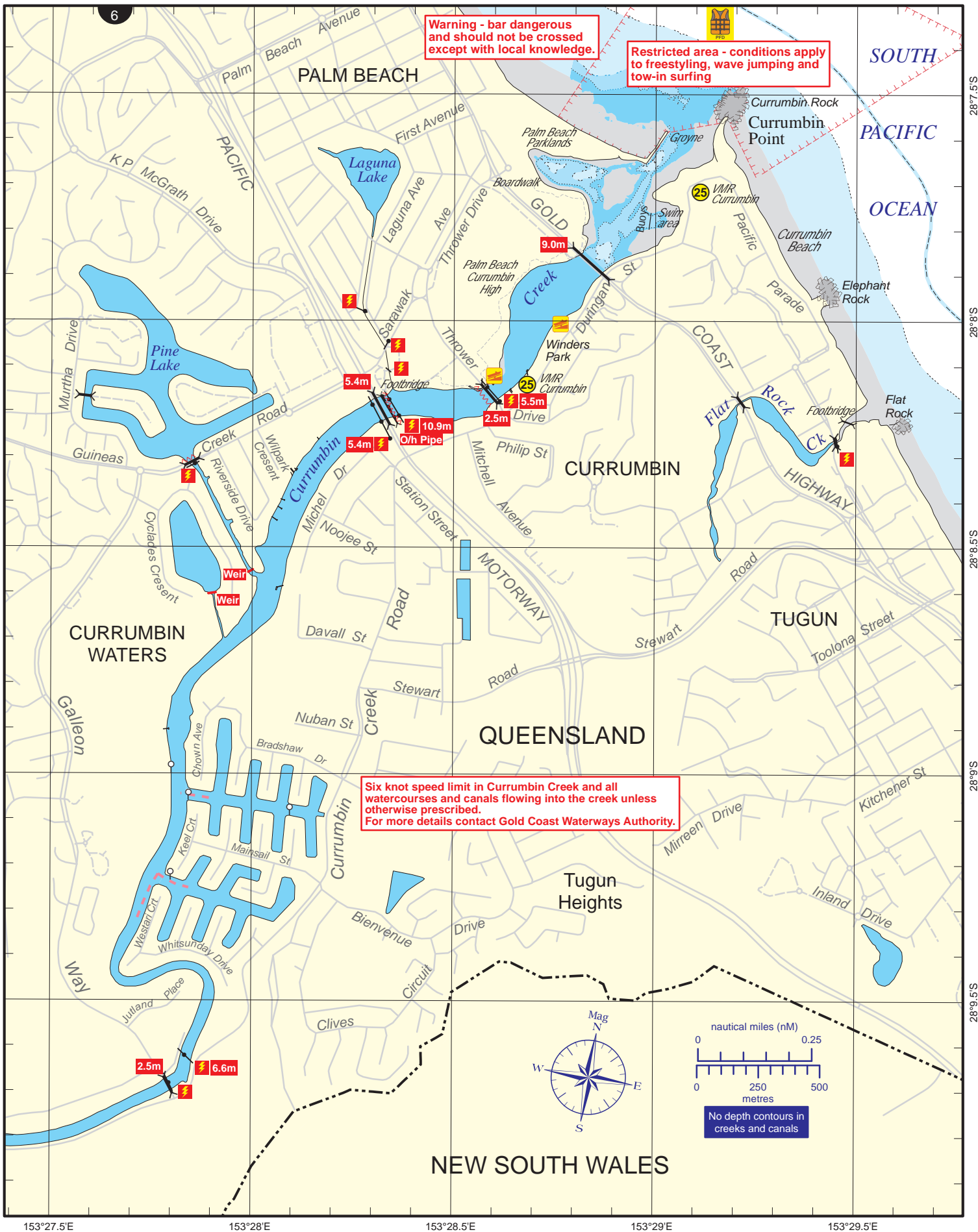
Always keep a proper lookout when boating.
Look up and live for power and cable crossings that may not be shown on these maps due to scale or recent construction.
CAUTION: depth contours have not been re-surveyed in most areas since the 2011 and 2013 floods.
Exercise care when travelling outside suggested navigation tracks.

© Copyright The State of Queensland 2019
 Queensland Department of Transport and Main Roads - Maritime Safety Queensland.
 To reproduce any map within this series, see terms and conditions at Maritime Safety Queensland's website (www.msq.qld.gov.au)

Nautical information current to 3 June 2019

CC BY

Queensland Government



Warning - bar dangerous and should not be crossed except with local knowledge.

Restricted area - conditions apply to freestyling, wave jumping and tow-in surfing

Six knot speed limit in Currumbin Creek and all watercourses and canals flowing into the creek unless otherwise prescribed. For more details contact Gold Coast Waterways Authority.

No depth contours in creeks and canals

Always keep a proper lookout when boating.
Look up and live for power and cable crossings that may not be shown on these maps due to scale or recent construction.

Nautical information current to 3 June 2019

CAUTION: depth contours have not been re-surveyed in most areas since the 2011 and 2013 floods.
 Exercise care when travelling outside suggested navigation tracks.

