

Landsborough to Nambour

# Rail Corridor Study

July 2009

## Special management area Woombye

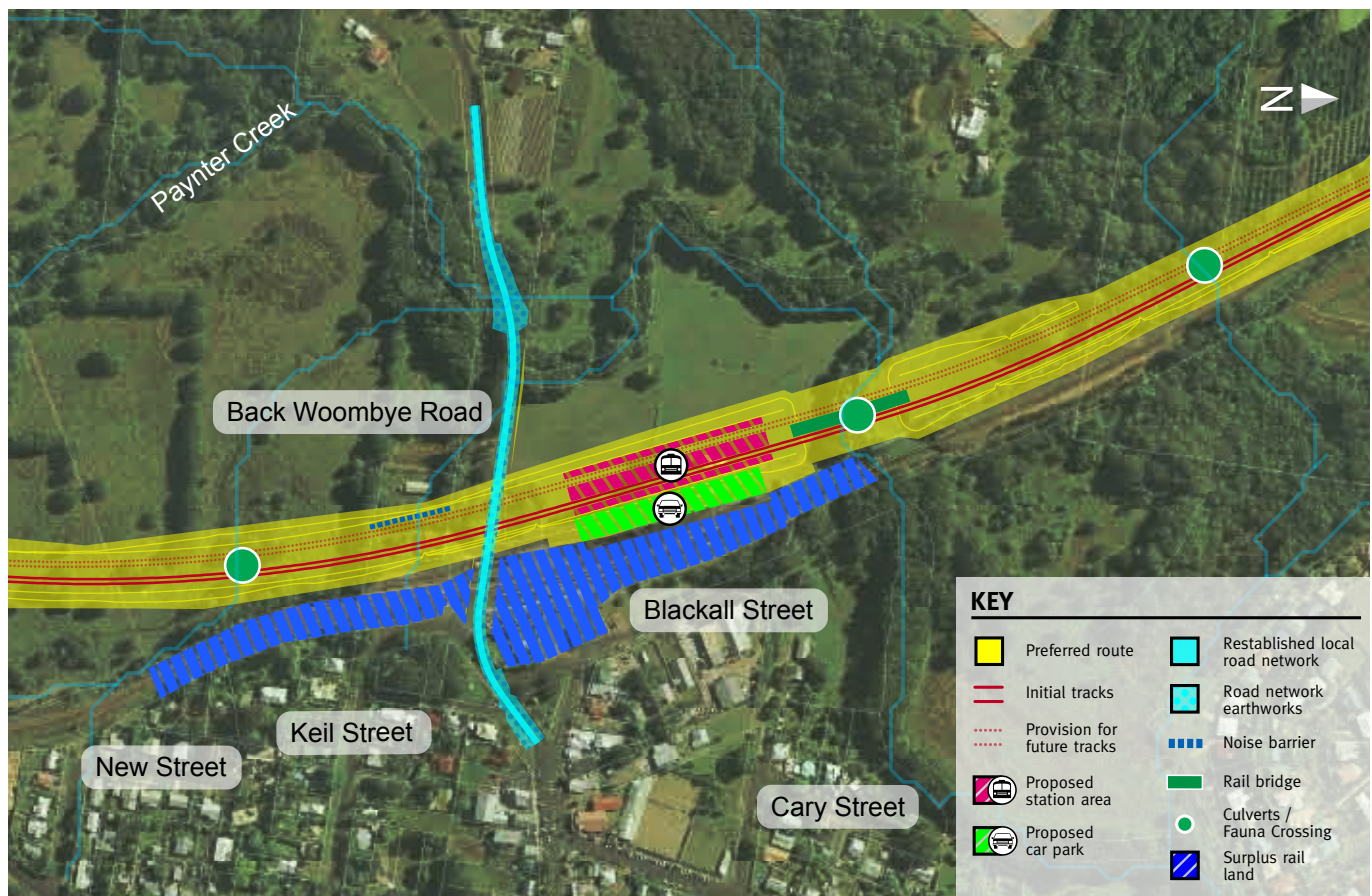
Feedback gathered from the community highlighted the following issues for Woombye:

- need to maintain connectivity between the town and the station
- the road connections around the railway need to be improved.

The road and rail option for Woombye has not changed since the options consultation phase, although community feedback has been taken into consideration for activities around the rail corridor. The option includes:

- the station located approximately 50 metres to the west of the existing station
- station car parking located to the east of the new railway
- realigning Back Woombye Road over the new railway to provide a connection to Blackall Street.

The Department of Transport and Main Roads has identified a range of possible opportunities for the re-use of surplus rail corridor. These opportunities have been recommended to the Sunshine Coast Regional Council for consideration as part of the Council's master planning activities for townships along the proposed rail corridor.



Map shows the road and rail option developed for Woombye.

For more information about the Landsborough to Nambour Rail Corridor Study, contact the study team:

Phone: 1800 221 991 (free call from landlines, charges may apply for mobile and pay phones)  
 Email: [railstudy@landsborough-nambour.com.au](mailto:railstudy@landsborough-nambour.com.au)  
 Web: [www.landsborough-nambour.com.au](http://www.landsborough-nambour.com.au)  
 Post: Reply Paid 4628, Sunshine Coast MC, QLD, 4560

## Special management actions for Woombye

### Design

- Park and ride opportunities in Woombye will be considered, in line with the Department of Transport and Main Roads and the Sunshine Coast Regional Council's plans for the road network in this area.

### Construction

- A traffic management plan will be developed for local traffic during construction.

### Operation

- There are no operational impacts in this area that will require mitigation.

### Decommissioning of surplus rail land

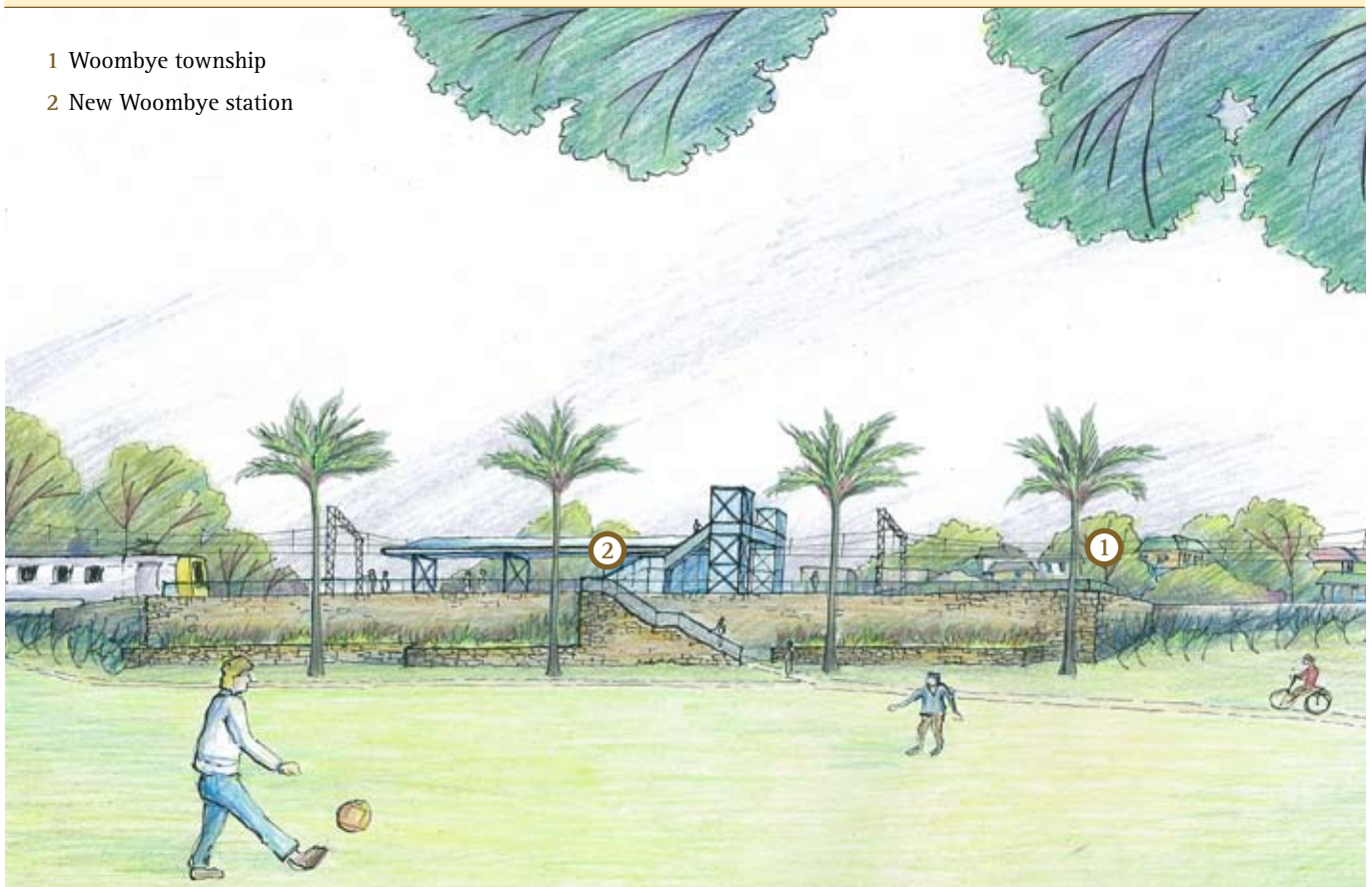
- Opportunities for the re-use of surplus rail land have been recommended to the Sunshine Coast Regional Council for consideration as part of Council's masterplanning activities for the railway towns.

### Before



### After

- 1 Woombye township
- 2 New Woombye station



Artist's impression of the view to the new Woombye station looking from the east.