



In early February, the southern service road between Aberdare Street, Dinmore and Law Street South, Redbank will open in its entirety to motorists, cyclists and pedestrians, along with the Tessman Street pedestrian bridge in Riverview.

Key features of the new service road

- Connects Aberdare Street, Dinmore to Law Street South, Redbank
- Signalised intersection at Endeavour Road and Aberdare Street
- One lane in each direction
- Speed limit of 60km per hour
- Shared cycle and pedestrian path
- On-road cycle lanes
- Pedestrian rest stops at Six Mile Creek and Esther Street

Key features of the new pedestrian bridge

- Three metres wide
- Ramp and stair access
- Anti-throw screens for safety
- Pedestrian rest stop on the southern side
- Yellow in colour to be easily identified

We thank you for your ongoing patience and cooperation while we complete works associated with the upgrade of the Ipswich Motorway.

Contact us

Phone: 1800 465 682*

Email: dinmore2goodna@tmr.qld.gov.au

Website: www.tmr.qld.gov.au/dinmore2goodna

Post: Ipswich Motorway Upgrade:
Dinmore to Goodna
PO Box 505
Booval Business Centre Qld 4304

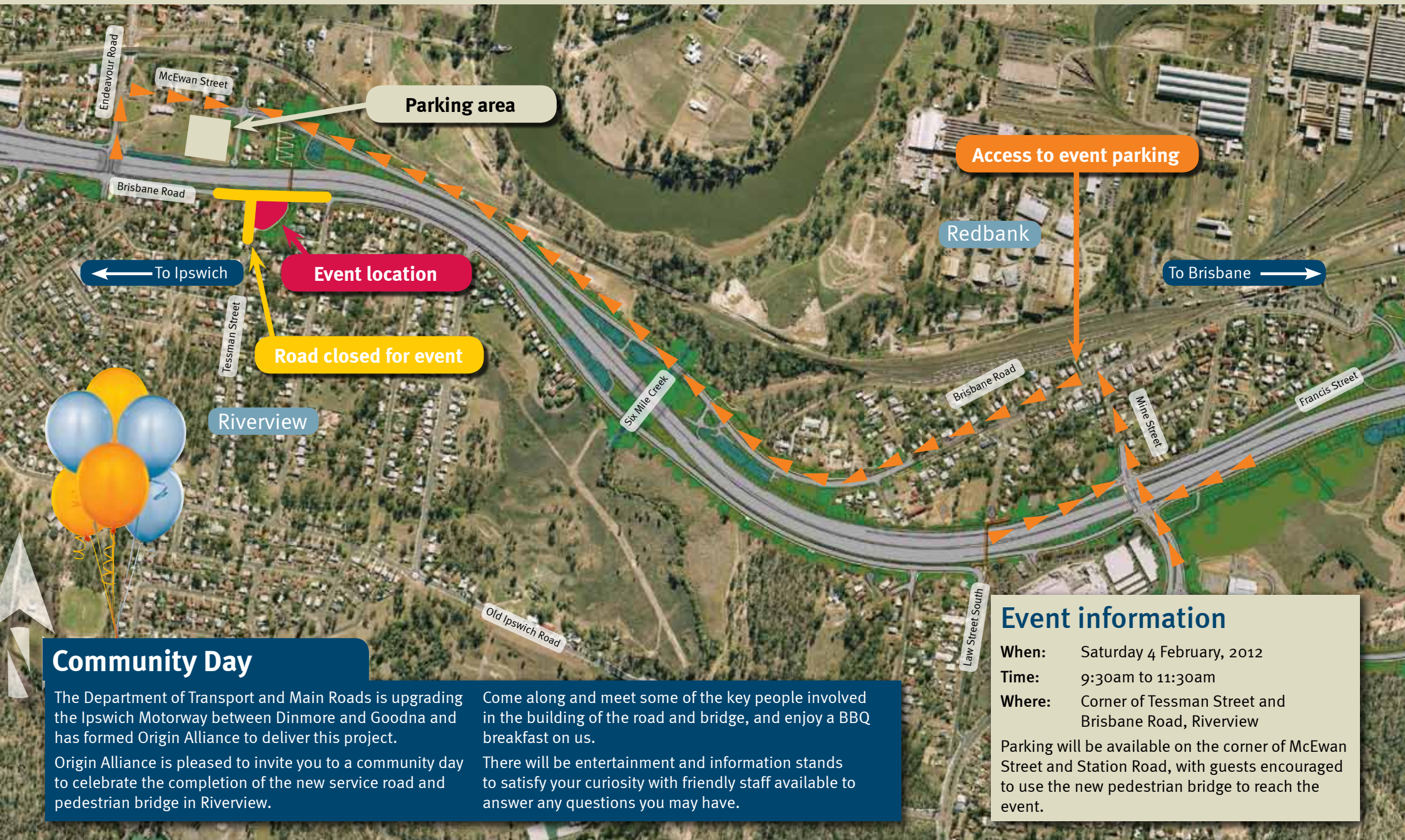
** Free call Australia wide. Higher rates apply from mobile phones and payphones.*



Transport and Main Roads

Riverview pedestrian bridge
and southern service road

Opening February 2012



Community Day

The Department of Transport and Main Roads is upgrading the Ipswich Motorway between Dinmore and Goodna and has formed Origin Alliance to deliver this project.

Origin Alliance is pleased to invite you to a community day to celebrate the completion of the new service road and pedestrian bridge in Riverview.

Come along and meet some of the key people involved in the building of the road and bridge, and enjoy a BBQ breakfast on us.

There will be entertainment and information stands to satisfy your curiosity with friendly staff available to answer any questions you may have.

Event information

When: Saturday 4 February, 2012
Time: 9:30am to 11:30am
Where: Corner of Tessiman Street and Brisbane Road, Riverview

Parking will be available on the corner of McEwan Street and Station Road, with guests encouraged to use the new pedestrian bridge to reach the event.