

Centenary Highway Interchange



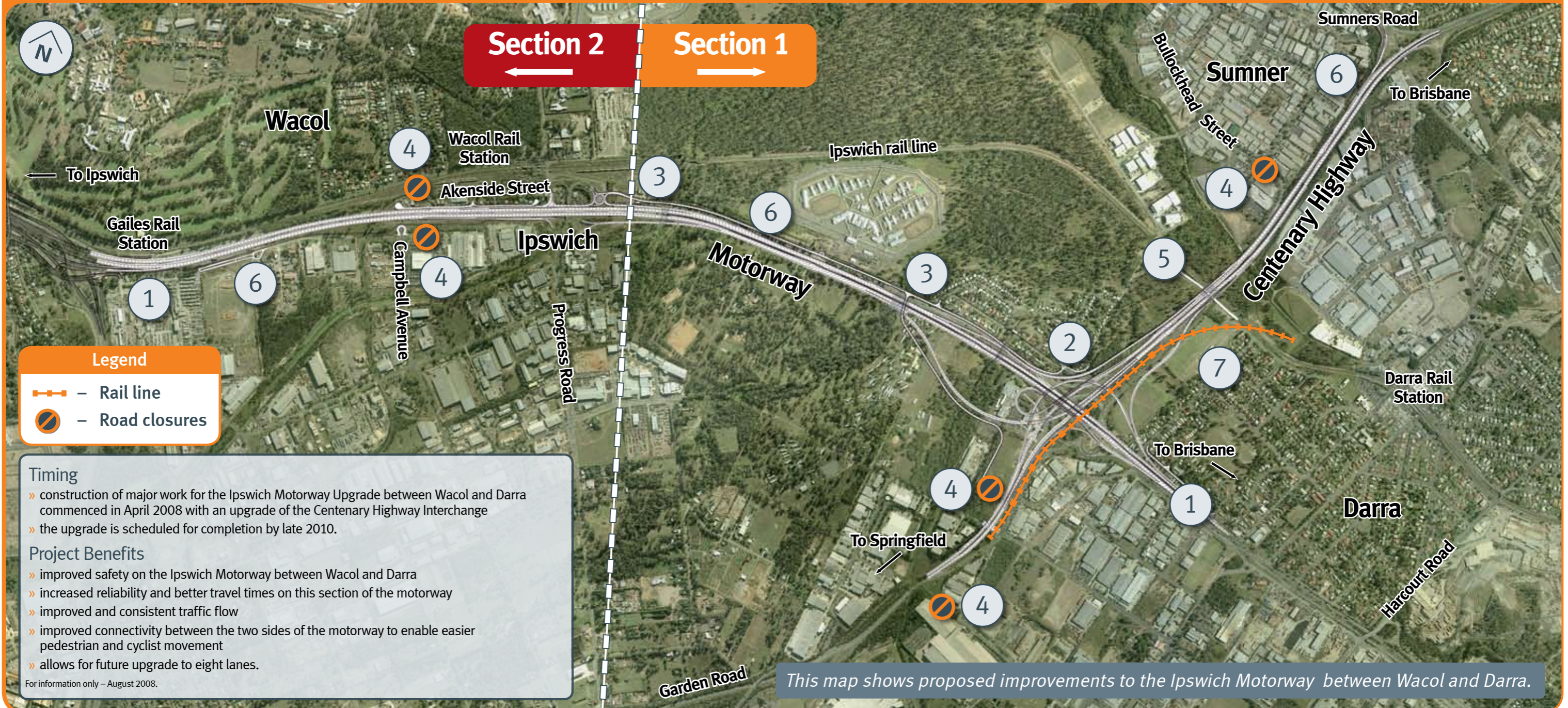
Artist's impression only.

Artist's impression of the new Centenary Highway Interchange multi-level system interchange

Section 1 east of Progress Road in Wacol (Jervis Street, Darra to Sandy Creek, Wacol)

Section 2 west of Progress Road (Sandy Creek, Wacol to the Ipswich Logan Motorway Interchange, Gailes)

- 1 widening the Ipswich Motorway from the Logan Motorway at Gailes to Jervis Street at Darra (five kilometres) from four to six lanes, with provision for eight lanes in the future
- 2 a major upgrade of the Centenary Highway Interchange
- 3 new bridges over Bullockhead and Sandy Creeks
- 4 removal of motorway access and exit points at Campbell Avenue and Akenside Street at Wacol, Bakery Road and Kelliher Road at Darra and Bullockhead Street at Sumner, to improve safety and traffic flow
- 5 new bridges over the Ipswich rail line
- 6 new pedestrian and cyclist paths
- 7 earthworks and bridgeworks for a new rail line from Darra to Springfield passing through the new Centenary Highway Interchange



Legend

- Rail line
- Road closures

Timing

- » construction of major work for the Ipswich Motorway Upgrade between Wacol and Darra commenced in April 2008 with an upgrade of the Centenary Highway Interchange
- » the upgrade is scheduled for completion by late 2010.

Project Benefits

- » improved safety on the Ipswich Motorway between Wacol and Darra
- » increased reliability and better travel times on this section of the motorway
- » improved and consistent traffic flow
- » improved connectivity between the two sides of the motorway to enable easier pedestrian and cyclist movement
- » allows for future upgrade to eight lanes.

For information only – August 2008.

This map shows proposed improvements to the Ipswich Motorway between Wacol and Darra.