

Ipswich Motorway Upgrade - Wacol to Darra:

Works notification flyer November 2009

Traffic changes for Arthur Gorrie Correctional Centre and Centenary Village motorists

From 5:00am on Monday 30 November 2009, access to Arthur Gorrie Correctional Centre and Centenary Village will change.

Arthur Gorrie Correctional Centre (AGCC)

From 30 November until mid-December 2009, access to AGCC will be via a new service road which runs beside the eastbound lanes of the Ipswich Motorway. Access into and out of AGCC will be via the new roundabout near the Progress Road Interchange only (MAP 1).

From mid-December 2009, additional access will be available to AGCC from the new service road which travels under the Ipswich Motorway and connects to Boundary Road in the Richlands industrial area (MAP 2).

Centenary Village

On 30 November 2009, direct access into Centenary Village via the Ipswich Motorway and northern suburbs ramp will be permanently closed.

This closure is necessary to complete works on the new service road between Centenary Village and the Progress Road Interchange.

From 30 November until mid-December 2009, access to Centenary Village will be via the new service road which travels under the Ipswich Motorway and connects to Boundary Road in the Richlands industrial area. Access will still be available via Warrender Street (MAP 1).

From mid-December 2009, additional access will be available to Centenary Village from the Progress Road Interchange via the service road which runs beside the eastbound lanes of the Ipswich Motorway (MAP 2).

Please refer to MAP 1 and MAP 2 overleaf.

From early 2010, the service road which runs beside the eastbound lanes of the Ipswich Motorway will be completed. The final service road will start at the new roundabout near the Progress Road Interchange and will finish at Centenary Village, at the intersection with Kokoda and Sanananda Streets.

Please follow directions from traffic control and signage along the new service road. All works are subject to weather and construction conditions.

Contact us

The community engagement team is available to answer any queries you may have:

Free call:

1800 605 410

Free call Australia wide. Higher rates apply from mobile phones and pay

Post:

Ipswich Motorway Upgrade:
Wacol to Darra
Reply Paid,
PO Box 942,
Sumner Park BC
QLD 4074

Email:

wacol2darra@tmr.qld.gov.au

Website:

www.mainroads.qld.gov.au/
wacol2darra

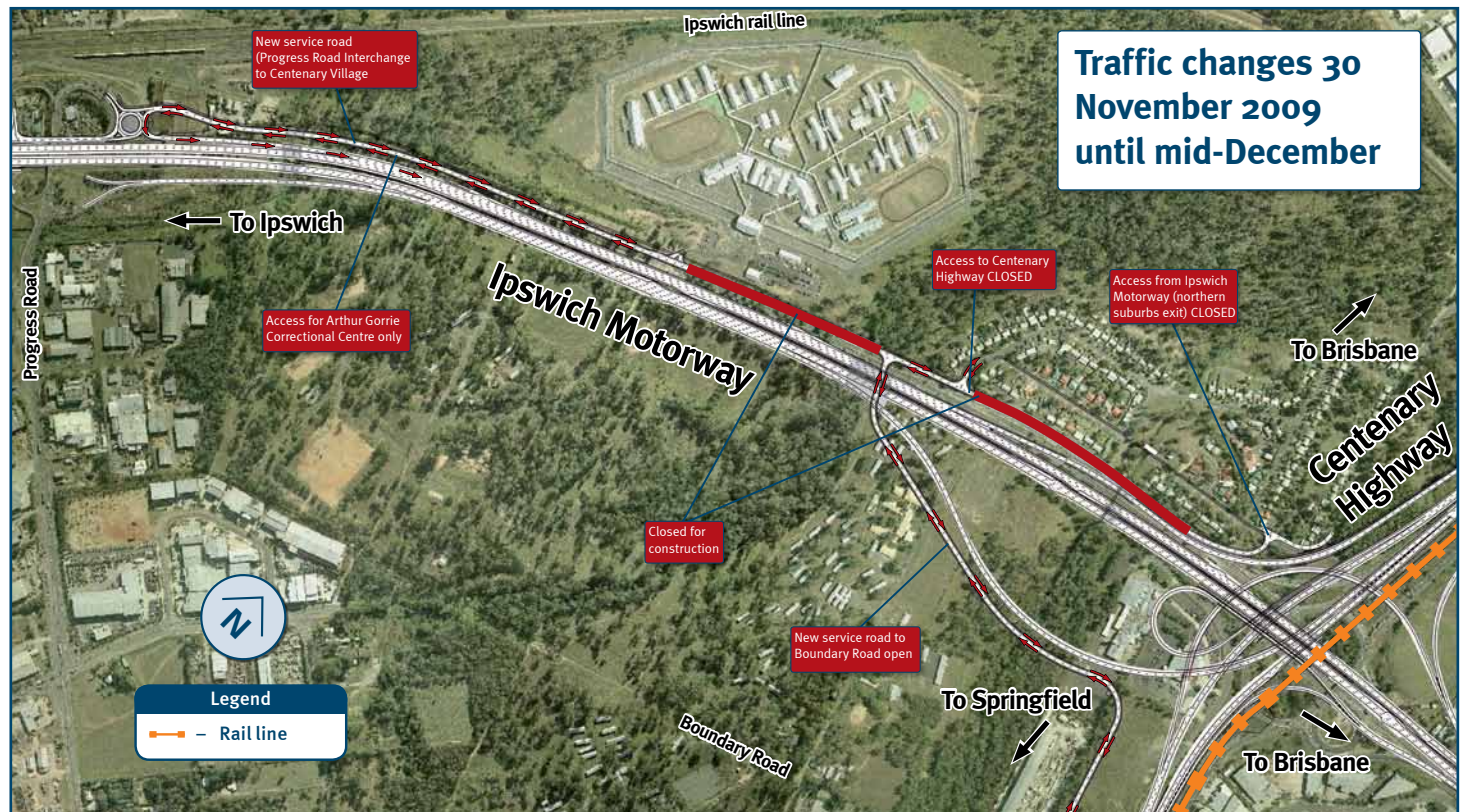
SMS updates*:

www.westerncorridorsms.qld.gov.au

*Visit the website to receive free project updates direct to your mobile phone.



Map 1



Map 2

