

Ipswich Motorway Upgrade

Dinmore to Goodna

Winter 2010



Welcome again to the Dinmore to Goodna project update. In this issue, we outline how work is progressing, explain a bit more about the project and its people and answer some of the questions you've been asking us.

This is one of the largest and most complex road projects ever undertaken in Queensland. We are widening the motorway, easing congestion, enhancing safety and improving access between communities. And all of this is taking place in the middle of one of Queensland's busiest motorways. It may be hard to see exactly what's happening behind the barriers but, as the photos in this issue show, the project is a hive of activity as we build new lanes, ramps, bridges, retaining walls and service roads.

I know that construction work can be inconvenient for business, residents and motorists. This can sometimes create frustrations, however we are committed to minimising this disruption, and we make sure that local shops, services and residences remain accessible.

If you are one of those affected, I'd like to thank you for your patience as we undertake these essential works.

The map inside shows what the rebuilt motorway will look like. As the famous shampoo commercial says, it won't happen overnight, but it will happen! I hope you agree that it will be worth the wait.

Please contact the project team on 1800 465 682 if you need further information or would like to receive email or SMS updates about the project.

Mick O'Dwyer
Alliance Project Manager



The 8 km Dinmore to Goodna upgrade is being funded by the Australian Government. It is being delivered by Origin Alliance, which includes the Department of Transport and Main Roads, Abigroup, Fulton Hogan, Seymour Whyte Constructions, SMEC Australia and Parsons Brinckerhoff.

The Alliance is upgrading the existing motorway to six lanes, improving safety, easing congestion, providing improved access to public transport and enhancing cycle and pedestrian access.

Project snapshot



When work is completed in 2012, motorists and local residents will experience:

- More reliable traffic flows and less congestion along the motorway
- Greater safety, with longer, more evenly spaced access ramps
- New and upgraded service roads to separate local and regional traffic
- Safer and easier crossings for pedestrians and cyclists

Project benefits



In this issue

- Project map
- Your questions answered
- The state of Origin
- Visitor Experience Centre
- How to contact us



The state of Origin



We are a diverse group, from a variety of social and **cultural backgrounds**. But one thing we share in common is a passion for building this project.



Origin is Australia's largest road transport alliance. There will be more than 1200 alliance employees working on the project at its peak, with many more contractors and subcontractors.



Redbank State School winners of our competition to design an image for our community car.



Although we are visitors in this area, we are also active contributors to the community. We source materials from local suppliers wherever possible, and our workers spend thousands of dollars with local businesses every week.



We donate blood to the Red Cross, support local charities and fundraise to support research into prostate and breast cancer.



Why are there so many temporary traffic changes along the motorway?

Upgrading a motorway and maintaining traffic flow is a major challenge. It's a bit like renovating your house while you're still living in it – and in both cases, maintaining safety and access are the two biggest issues.

We often need to move traffic lanes to provide the room necessary to upgrade the road section by section. Other times, we need to create temporary roads to ensure that motorists can still get to the motorway, local shops, services and residences.

Organising the work areas and the traffic switches is like completing a jigsaw puzzle, with all the pieces fitting together to complete the project.

Where possible, we undertake major traffic switches at night and outside peak times, in order to maintain traffic flow and minimise disruptions.



Q&A

Will the motorway be able to cope with future growth?

Upgrading both the motorway and adjacent service roads will increase capacity and traffic flows, enabling more through traffic to use the motorway and improving connectivity between suburbs for local traffic.

The alignment has also been designed to allow for different lane arrangements, interchange options and a possible rail expansion in the future.



Why do you use concrete barriers and screens along the motorway?

Protective concrete barriers and 'anti-gawk' screens are needed for safety. They achieve two things: they prevent motorists from being distracted by construction activities, and they help protect road workers on the other side of the barriers.

Reduced speed limits through road works also help provide a safer environment for motorists and workers.

These safety measures are working – serious traffic incidents on this section of the Motorway have fallen by two thirds since work began.



Ipswich Motorway Upgrade: Dinmore to Goodna



New Tessman Street pedestrian bridge

The current Tessman Street overpass will be removed and replaced with a pedestrian bridge to link north and south Riverview.

New northern service road from Dinmore to Brisbane Road at Redbank

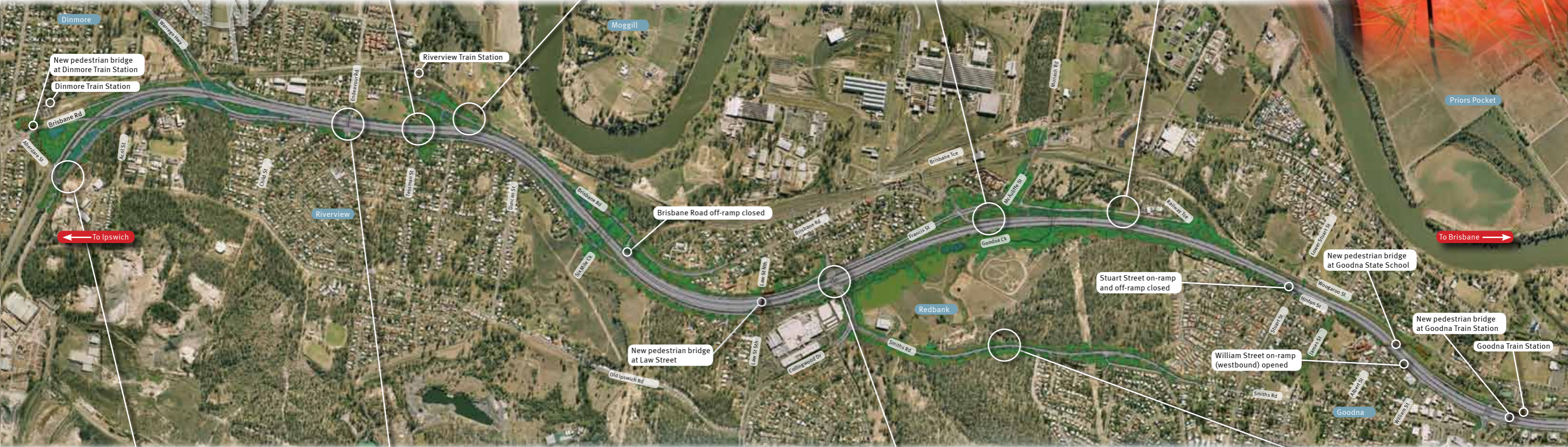
This provides a new local connection allowing local traffic to move freely between Dinmore and Redbank without needing to access the motorway.

Redbank on-ramp (eastbound)

A new entrance ramp near the Brisbane Road/Bridge Street roundabout will provide eastbound access to the motorway.

New service road

A new service road will be constructed to connect Mine Street to Lower Cross Street.



New southern service road between Aberdare Street and Redbank Plaza

The service road will allow traffic to move freely from Dinmore to Redbank, without needing to connect back onto Old Ipswich Road or the motorway.

New Endeavour Road connection

At Endeavour Road the motorway will be elevated to allow for a connection. There will be no direct access to/from the motorway to Endeavour Road.

Upgrade of Mine Street connection

Additional lanes will be constructed as part of upgrading the interchange at Mine Street.

Smiths Road extension

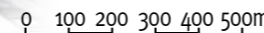
The Smiths Road extension will be constructed in partnership with Ipswich City Council and provide a direct connection from Mine Street in Redbank to the existing Smiths Road in Goodna. This will cater for short trips between Goodna and Redbank, eliminating the need for motorists to access the motorway for local travel.



Artist's impression of Endeavour Road connection



Artist's impression of Mine Street connection



Transforming the Western Corridor

Visitor Experience Centre

A Visitor Experience Centre recently opened at the Redbank site office. As the name suggests, the centre is all about bringing the project to life. 'Hands on' learning is a feature of the displays, which are designed to be informative and interactive.

The centre explains the whole process of road building, from planning to completion. Visitors can learn how roads are designed and built, how we manage traffic, how we protect our local environment, and why the safety of workers and road users is so important.

There are fun activities for kids and project information for 'grown ups'. Schools, families and community groups are invited to come and learn more about the project.

As you can probably guess, we're excited about the Centre – and we hope you will be too. Please contact the Community Team on 1800 465 682 for more information.



The VEC provides an informative and interactive guide to the project



Keeping you informed

This is a large and complex project. We are working alongside hundreds of residents and tens of thousands of motorists pass through our road works each day.

Origin Alliance is committed to keeping you informed, and we understand that you need relevant and up-to-date information about road and traffic changes.

That's why we have a community engagement team to respond to enquiries and provide information about construction activities.

We will let you know when road works are planned, using SMS notifications, variable message signs, radio and newspaper advertisements, newsletters, doorknocks and works notification flyers.

We provide a freecall 1800 hotline and we also conduct regular site tours and community displays at local shopping centres to provide updates and answer questions.

Contact us

Phone: 1800 465 682

Free call Australia wide. Higher rates apply from mobile and pay phones.

Post: Ipswich Motorway Upgrade:
Dinmore to Goodna
PO Box 505, Booval Business Centre
QLD 4304

Email: dinmore2goodna@tmr.qld.gov.au

Website: For further information and to access the latest work notification flyers:
www.mainroads.qld.gov.au/dinmore2goodna

SMS: Visit the website to receive free project updates to your mobile phone:
www.westerncorridorsms.qld.gov.au