

Gateway Motorway North Planning Study

Issue 03 • June 2011

Gateway Motorway North draft plan released!

A draft plan to upgrade the Gateway Motorway from Nudgee to the Bruce Highway is now ready for public comment. The Department of Transport and Main Roads is encouraging the community to get involved and have their say on the draft plan.

The upgrade aims to reduce congestion and improve traffic safety and efficiency on the motorway as south east Queensland's population continues to grow.

The Australian Government and the Queensland Government have worked together to develop a draft plan that stays within the existing road corridor where possible. The design aims to reduce impacts to property and the environment. It also provides the best value for money by making best use of the existing motorway.

To achieve this, the draft plan proposes to widen the motorway from four to six lanes from Nudgee to the Deagon Deviation. The Deagon Deviation will be widened between Depot Road and

Bracken Ridge Road to provide two lanes in each direction (*see inside this newsletter for more information on the key features of the draft plan*).

The draft plan is now available for comment and will be on display from 16 June to 28 July 2011. Your feedback and the results of ongoing technical and environmental studies will help finalise the preferred plan.

The Australian Government has approved \$125 million for the construction of Stage 1—Gateway Additional Lane (refer to back page) and further development of planning and the business case for the Gateway Motorway North Project (Nudgee to the Bruce Highway).

Get involved

Transport and Main Roads needs your feedback on the draft plan to develop a preferred plan that caters for future traffic growth and addresses the needs of existing and future road users.

How to provide your feedback:

- Visit the project team at one of the staffed displays (see back page for a list of public display dates and locations)
- Email your feedback to: gatewaynorth@tmr.qld.gov.au
- Free call 1800 897 778
- Post:
Department of Transport and Main Roads
Gateway Motorway North project
PO Box 70
Spring Hill Qld 4004



See inside for more information on:

- ▶ Draft plan (Nudgee to the Bruce Highway)
- ▶ Deagon Deviation options
- ▶ Public display dates and locations
- ▶ Next steps



Australian Government

Nation Building Program



Draft Plan

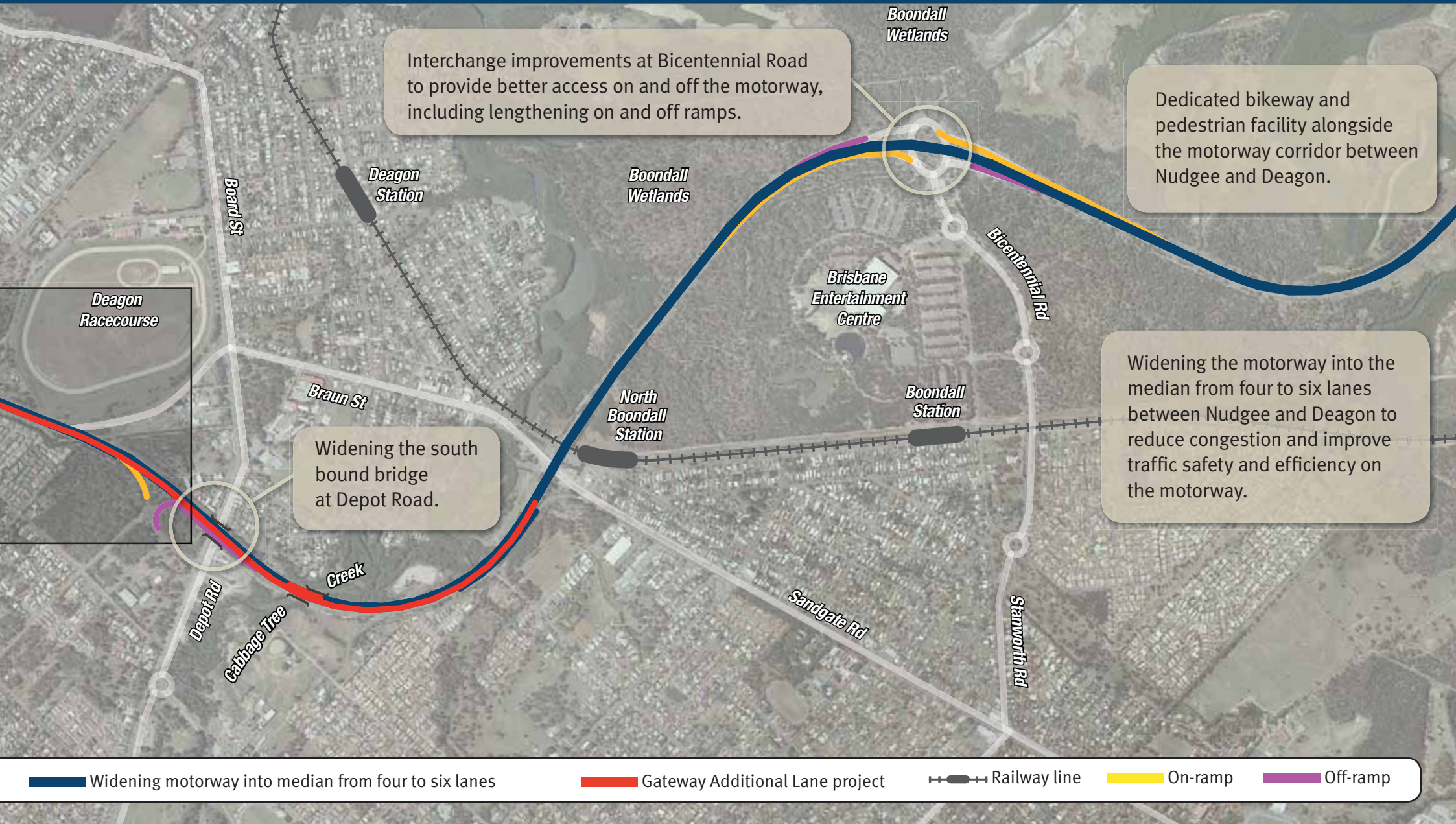
(Nudgee to the Bruce Highway)

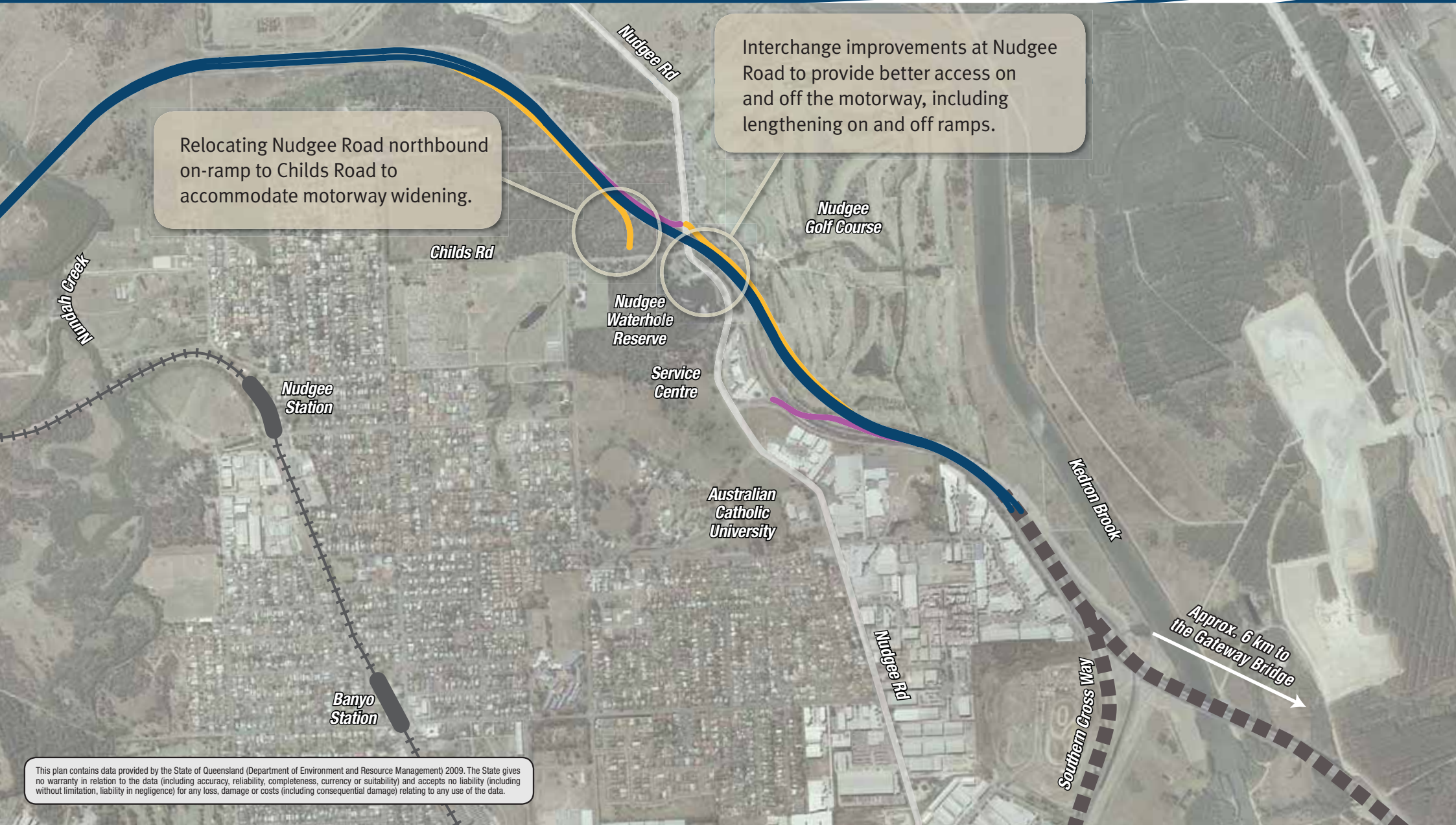


Safety and pavement improvements between Deagon and the Bruce Highway (remaining as four lanes).

See options for the Deagon Deviation on following page

- Existing highway
- Safety and pavement improvements





Relocating Nudgee Road northbound on-ramp to Childs Road to accommodate motorway widening.

Interchange improvements at Nudgee Road to provide better access on and off the motorway, including lengthening on and off ramps.

This plan contains data provided by the State of Queensland (Department of Environment and Resource Management) 2009. The State gives no warranty in relation to the data (including accuracy, reliability, completeness, currency or suitability) and accepts no liability (including without limitation, liability in negligence) for any loss, damage or costs (including consequential damage) relating to any use of the data.

Deagon Deviation options



Option A. Will have a greater impact on the Deagon Wetlands through the removal of vegetation. There will be minor impacts to the Deagon Racecourse.

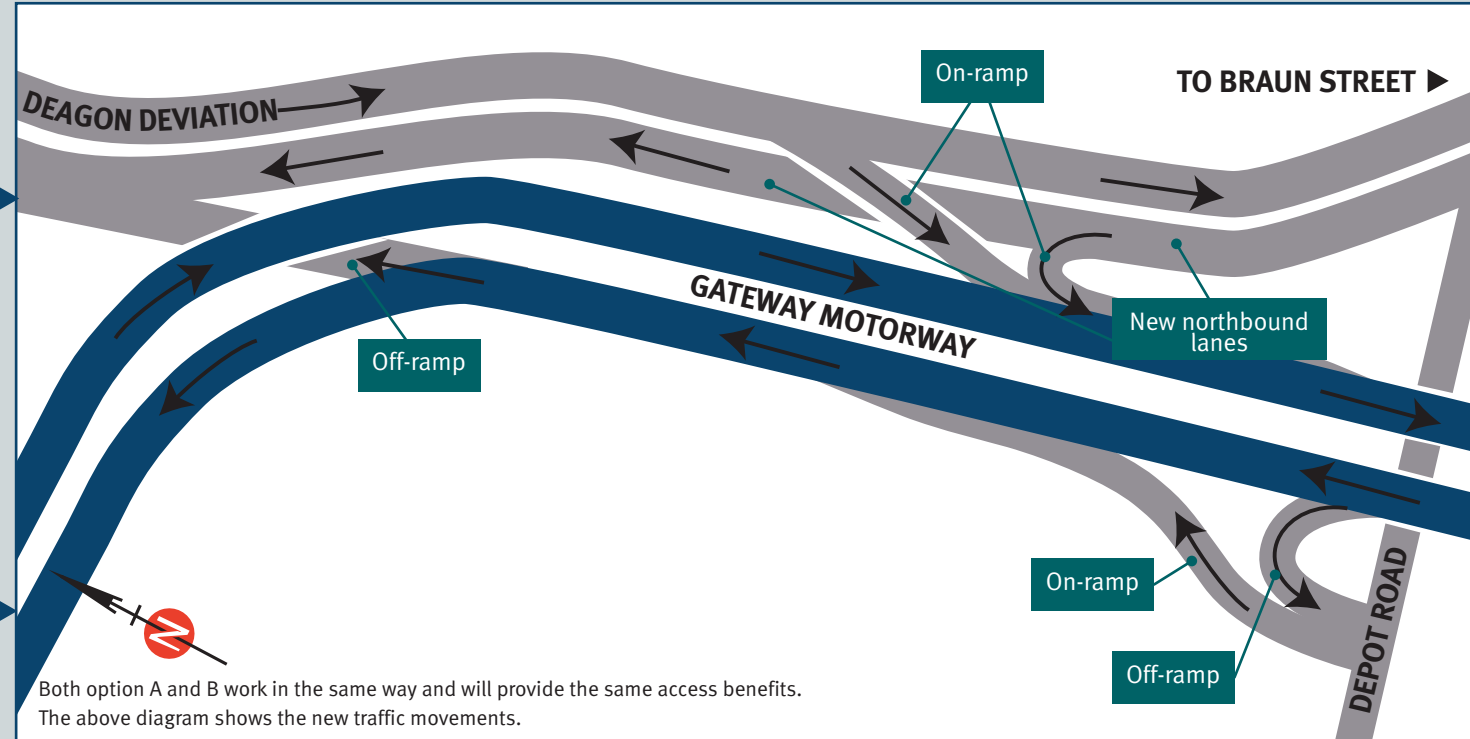


Option B. Will have a greater impact on the Deagon Racecourse, however, reconfiguration will not affect the function of the racecourse. There will be minor impacts to the Deagon Wetlands.

Key features of both options

- widen the Deagon Deviation between Depot Road and Bracken Ridge Road as a two-way, four lane 80km/h arterial road
- new grade-separated (overpass) southbound motorway on-ramp combining the existing ramps from the Deagon Deviation and Depot Road
- both options will function the same way when travelling north or south along the Deagon Deviation
- Barrett Street pedestrian bridge to be maintained under both options.

How the upgraded Deagon Deviation will work



Both option A and B work in the same way and will provide the same access benefits. The above diagram shows the new traffic movements.

Travelling north and south along the Deagon Deviation

Travelling north

- motorists can now use the Deagon Deviation and access the motorway by using the Depot Road on-ramp
- if you are approaching from Depot Road and travelling along the Deagon Deviation you will continue to use the Depot Road on-ramp to travel south on the Gateway Motorway.

Travelling south

- accessing the motorway to travel south will now occur by using the relocated on-ramp from the Deagon Deviation
- this ramp has now been moved further south along the Deagon Deviation to combine with the existing ramp from Depot Road.



Stage 1 of upgrading the Gateway Motorway north

Gateway Additional Lane project (refer to map)

The Gateway Additional Lane project, released in December 2010, has been identified as Stage 1 of upgrading the Gateway Motorway north. It will provide an extra northbound lane for 2.5km between Sandgate Road and the Deagon Deviation. This will alleviate traffic in the afternoon peak travel period.

Placing the additional lane at this location will deliver the greatest travel time savings of any other section along the corridor. Detailed traffic investigations have shown that this section of the motorway receives the highest volume of traffic during the afternoon peak travel period, and can amount to traffic delays as far south as the new Gateway Motorway. Improvements to the section at Nudgee alone would not improve travel times as significantly as the priority section identified for upgrading.

Construction of the Gateway Additional Lane is expected to commence in early 2012 and is scheduled for completion in 2014.

These works will form part of the future widening proposed in the draft plan.

Nudgee Interchange Upgrade

As part of the Gateway Motorway North Planning Study, the project team commenced community consultation on the Nudgee Interchange in November 2008. During this period the community was encouraged to provide feedback on the draft upgrade plan.

Key elements that were identified during the planning study have now been incorporated into the current draft plan as part of a staged approach for the overall Gateway Motorway North Project.

Next steps

The project team will continue detailed investigations into the social, environmental and economic impacts of the upgrade to this section of the motorway, taking into account consultation with the broader community.

The preferred plan is expected to be available for comment early to mid 2012. Once the preferred design is determined, a business case will be finalised in consultation with other state government agencies and funding submissions prepared.

The upgrade works to this section of the motorway are currently programmed between 2020/21-2025/26 as identified in the 2010-2031 South East Queensland Infrastructure Plan and Program.

Public displays

Go to our staffed displays

From 16 June to 28 July 2011, the Department of Transport and Main Roads will be hosting staffed public displays at the following locations:

Toombul Shopping Centre, 1015 Sandgate Road, Toombul
Thursday 16 June 2011 from 4pm to 8pm
Saturday 23 July 2011 from 10am to 2pm

Bracken Ridge Plaza, Cnr Telegraph and Norris Roads, Bracken Ridge
Wednesday 22 June 2011 from 4pm to 8pm
Saturday 16 July 2011 from 10am to 2pm

Centro Taigum, Cnr Church and Beams Roads, Taigum
Saturday 18 June 2011 from 10am to 2pm
Wednesday 13 July 2011 from 4pm to 8pm

The displays will be staffed by members of our study team.

Go to our fixed displays

We will also have fixed unstaffed displays at libraries and local elected representatives offices. Fixed display sites are:

Banyo Library, St Vincent's Road, Banyo
Bracken Ridge Library, Bracken Street, Bracken Ridge
Chermside Library, Hamilton Road, Chermside
Sandgate Library, Seymour Street, Sandgate

Project Phases

