

# Ipswich Motorway Upgrade: Wacol to Darra

The Department of Main Roads has established SAFELink Alliance to deliver the Ipswich Motorway Upgrade from Wacol to Darra. Construction is underway and is due for completion in December 2010.

The SAFELink Alliance consists of five partners including Main Roads, Leighton Contractors, BMD Constructions, Maunsell Australia and Arup.

## Why upgrade the Ipswich Motorway?

South east Queensland's population is projected to grow by over one million people in the next two decades. The Australian and Queensland Governments have agreed on the way forward for increasing the capacity of the Ipswich Motorway to meet projected traffic demands in this growth corridor. It's also important that the motorway serve its function in moving freight efficiently from interstate and other parts of Queensland to Brisbane and the port of Fisherman Island.



Traffic demands are increasing in the Western Corridor.

Key benefits of the Ipswich Motorway upgrade between Wacol and Darra include:

- » improved safety for motorists, pedestrians and cyclists
- » increased reliability and better travel times
- » improved and more consistent traffic flow
- » improved connectivity between the Ipswich Motorway and Centenary Highway
- » new pedestrian and cyclist paths
- » provision for a future upgrade from six to eight lanes.



# Ipswich Motorway Upgrade Wacol to Darra

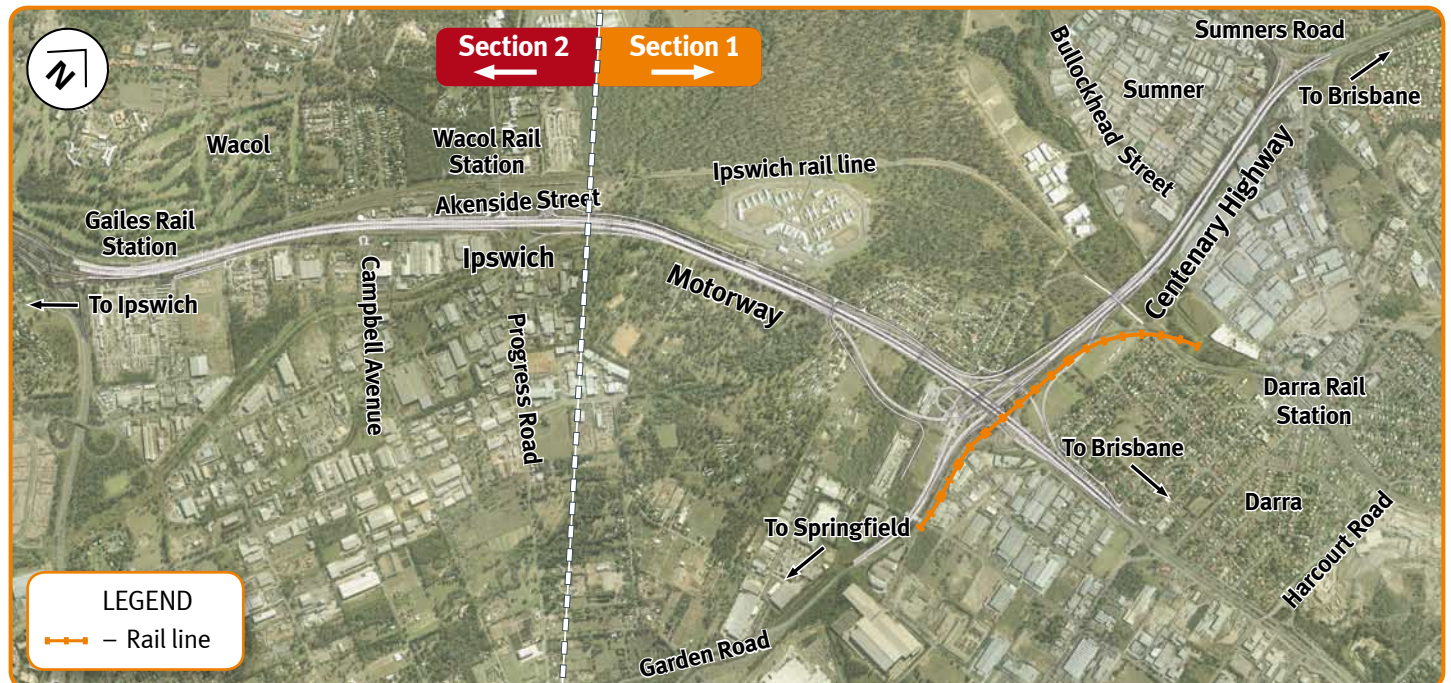
## What will the upgrade include?

For construction purposes the project has been divided into two sections. Construction of the first section, east of Progress Road in Wacol (Jervis Street, Darra to Sandy Creek, Wacol) began in March 2008.

Prior to the start of section two works, west of progress road (Sandy Creek, Wacol to the Ipswich Logan Motorway Interchange, Gales) Main Roads will engage the community about future traffic impacts for this section.

The upgrade will include:

- » widening the Ipswich Motorway from the Logan Motorway at Gales to Jervis Street at Darra (five kilometres) from four to six lanes, with provision for eight lanes in the future
- » major upgrade of the Centenary Highway Interchange
- » new bridges over Bullockhead and Sandy Creeks
- » new bridges over the Ipswich rail line
- » new pedestrian and cyclist paths
- » removal of motorway access and exit points at Campbell Avenue and Akenside Street at Wacol, Bakery Road and Kelliher Road at Darra and Bullockhead Street at Sumner, to improve safety and traffic flow
- » earthworks and bridgeworks for a new rail line from Darra to Springfield passing through the new Centenary Highway Interchange.



This map shows proposed improvements to the Ipswich Motorway between Wacol and Darra.

## Contact us

Community Engagement Team

### Phone

1800 605 410\*

\*Free call Australia Wide. Higher rates apply from mobile phones and pay phones.

### E-mail

wacol2darra@mainroads.qld.gov.au

### Post

Ipswich Motorway Upgrade Wacol to Darra  
Reply Paid, PO Box 942  
Sumner Park BC QLD 4074  
(no stamp required)

### Website

[www.mainroads.qld.gov.au/wacol2darra](http://www.mainroads.qld.gov.au/wacol2darra)

### SMS updates\*

[www.westerncorridorsms.qld.gov.au](http://www.westerncorridorsms.qld.gov.au)

\*Visit the website to receive free project updates direct to your mobile phone.

For other Western Corridor transport projects Phone 1800 013 189

**Please remember that safety around roadworks is a two-way street.  
We ask that you drive carefully and responsibly during these construction works.**

# SAFElink Alliance

## Background

The Australian Government has committed to upgrade the existing Ipswich Motorway between Wacol and Darra to relieve traffic congestion and improve safety and reliability on this important road.

The Queensland Department of Main Roads, responsible for the delivery of the upgrade, determined that an integrated alliance project team was needed to deliver the project and meet the objectives for the upgrade.

Main Roads established SAFElink Alliance to deliver the Ipswich Motorway Upgrade between Wacol and Darra.

SAFElink Alliance consists of five partners including Main Roads, Leighton Contractors, BMD Constructions, Maunsell Australia and Arup.

## SAFElink Alliance vision and values

### Vision

Empowering our people

Transforming the Western Corridor

Saving time, Saving lives.

### Values

United – we will achieve outstanding outcomes as one team

Wellbeing – the wellbeing of our team, the community and stakeholders is paramount in all we do

Integrity – we say what we believe, do what we say and trust each other to do the same

Excellence – we will exceed our own expectations.



The wellbeing of the SAFElink Alliance team is paramount.

W2D-053

# Ipswich Motorway Upgrade Wacol to Darra



SAFELink Alliance team members.

## What is an alliance?

- » It is a delivery mechanism where the owner and service providers come together under a commercial and legal framework to deliver capital projects
- » An alliance is governed and operated under an agreed set of principles

- » The intention of an alliance is to work as one team to deliver a high level of performance.

## SAFELink team structure

- » Our integrated project team has members from all partners
- » The team is governed by the “Alliance Leadership Team” (ALT)

- » Day-to-day management is by the “Alliance Management Team” (AMT)
- » Team members are chosen on a “best for project basis”.

## Contact us

Community Engagement Team

### Phone

1800 605 410\*

\*Free call Australia Wide. Higher rates apply from mobile phones and pay phones.

### E-mail

wacol2darra@mainroads.qld.gov.au

### Post

Ipswich Motorway Upgrade Wacol to Darra  
Reply Paid, PO Box 942  
Sumner Park BC QLD 4074  
(no stamp required)

### Website

[www.mainroads.qld.gov.au/wacol2darra](http://www.mainroads.qld.gov.au/wacol2darra)

### SMS updates\*

[www.westerncorridorsms.qld.gov.au](http://www.westerncorridorsms.qld.gov.au)

\*Visit the website to receive free project updates direct to your mobile phone.

For other Western Corridor transport projects Phone 1800 013 189

**Please remember that safety around roadworks is a two-way street.  
We ask that you drive carefully and responsibly during these construction works.**



Australian Government



Queensland Government

# Engaging the community

The Department of Main Roads has established SAFELink Alliance to deliver the Ipswich Motorway Upgrade from Wacol to Darra. Construction is underway and is due for completion in December 2010.

Main Roads is working closely with local councils and communities to deliver an improved transport network for the Western Corridor, encompassing the Ipswich Motorway Upgrade between Wacol and Darra.

The SAFELink Alliance Community Engagement Team is working with stakeholders to deliver improved transport outcomes for the community.

## What is community engagement?

Community engagement refers to the many ways that Main Roads, communities and individuals connect and interact in developing and implementing policies, programs, services and projects.

It is an open and accountable process involving a wide variety of department and community interactions, including information sharing, consultation, and to the appropriate extent, active participation regarding Main Roads' decision-making processes.

Getting the community involved is an essential part of Main Roads' business, and on any given day community engagement activities are taking place across the Wacol to Darra project.



The Main Roads Western Corridor Community Engagement Van keeps the public up-to-date at local events.

Your involvement helps us to better understand your requirements and needs, and the issues and impacts involved in our road building and maintenance activities. Community engagement can result in better solutions to issues, changes to the scheduling of works to minimise impacts and improved policies that reflect public concerns.

# Ipswich Motorway Upgrade Wacol to Darra

## Informing the community

The Community Engagement Team (CET) aims to build closer relationships between Main Roads and the community to enable the smooth delivery of this essential upgrade.

The CET endeavours to provide information about the project by:

- » briefing impacted stakeholders face-to-face
- » working closely with affected community members and stakeholders
- » holding quarterly Community Liaison Group meetings
- » hosting public information sessions at local venues
- » conducting presentations and briefings for community and industry groups
- » setting up library displays
- » making information accessible through flyers, newsletters, Main Roads website, email, SMS updates and advertising.



## Main Roads Western Corridor Community Engagement Van

At Main Roads we are making access to information our priority because we understand how busy people are. Over the next few years, a mobile van will be out and about in the Western Corridor delivering information to communities, making information easy to access for everyone.



Getting the community involved is an essential part of Main Roads business.

## Community Liaison Group

Main Roads has established a Community Liaison Group (CLG) to promote the two-way flow of information to the community and project team.

The group meets on a quarterly basis and receives project briefings and provides community input on a range of matters during construction of the Wacol to Darra section of the Ipswich Motorway Upgrade. Members will distribute information presented at CLG meetings to the broader community or interest groups they represent.

## Contact us

Community Engagement Team

### Phone

1800 605 410\*

\*Free call Australia Wide. Higher rates apply from mobile phones and pay phones.

### E-mail

wacol2darra@mainroads.qld.gov.au

### Post

Ipswich Motorway Upgrade Wacol to Darra  
Reply Paid, PO Box 942  
Sumner Park BC QLD 4074  
(no stamp required)

### Website

[www.mainroads.qld.gov.au/wacol2darra](http://www.mainroads.qld.gov.au/wacol2darra)

### SMS updates\*

[www.westerncorridorsms.qld.gov.au](http://www.westerncorridorsms.qld.gov.au)

\*Visit the website to receive free project updates direct to your mobile phone.

For other Western Corridor transport projects Phone 1800 013 189

**Please remember that safety around roadworks is a two-way street.  
We ask that you drive carefully and responsibly during these construction works.**