

Petrie Station

Moreton Bay Rail Link will deliver a 12.6 km dual-track rail line between Petrie and Kippa-Ring. Six new rail stations will be delivered as part of the project at Kallangur, Murrumba Downs, Mango Hill, Kinsellas Road, Rothwell and Kippa-Ring. Works will also be required at Petrie Station where the Moreton Bay Rail Link connects with the existing rail network.

These stations will incorporate a high level of security and visually appealing urban design.

Station access and parking

- Existing parking along the east of the station will be relocated and expanded.
- A new park 'n' ride facility will be provided off Paper Street, via Gympie Road for commuters.
- Park 'n' ride numbers will be finalised as part of detailed design.

Preliminary station design

Final station design will be in accordance with guidelines developed by the TransLink Transit Authority and Queensland Rail.

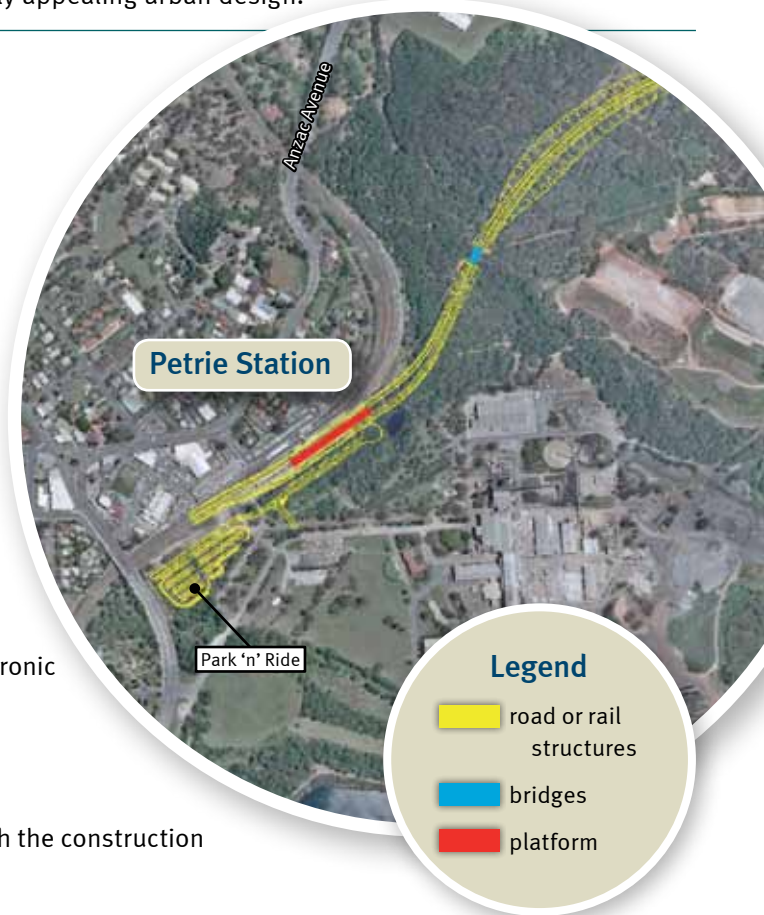
Station features will be refined during detailed design, but will typically include:

- a new 175-metre-long side platform, including an overhead walkway with stairs and lifts, passenger waiting facilities, electronic timetable information and other public amenities
- landscaping with native species and drought-resistant plants
- security cameras and emergency phones.

Work in operational corridor at Petrie Station will be integrated with the construction of the future third track between Lawnton and Petrie stations.

Construction impacts

The rail corridor has been moved further south than originally proposed between Petrie and Kallangur Station, away from residential properties at Caine, Beattie and Harding Streets.



Contact us

Moreton Bay Rail Link recognises the proximity of homes and businesses to the rail corridor. The project will carefully plan all work to ensure construction methodologies are chosen that limit the impact on the surrounding community as much as possible.

The project is committed to meaningful community engagement and encourages residents and businesses to contact the project team for more information.

Phone: 1800 096 821 *Free call within Australia. Higher rates apply from mobile phones and pay phones.*

Email: moretonbayrail@tmr.qld.gov.au

Website: www.tmr.qld.gov.au/moretonbayrail

Post: Moreton Bay Rail Link
Transport and Main Roads
Reply Paid 2439, Brisbane Qld 4001

Kallangur Station

Moreton Bay Rail Link will deliver a 12.6 km dual-track rail line between Petrie and Kippa-Ring. Six new rail stations will be delivered as part of the project at Kallangur, Murrumba Downs, Mango Hill, Kinsellas Road, Rothwell and Kippa-Ring. Works will also be required at Petrie Station where the Moreton Bay Rail Link connects with the existing rail network.

These stations will incorporate a high level of security and visually appealing urban design.

Station access and parking

- Access to the station will be via a new overpass from Goodfellows Road in the north or via a new road access from Dohles Rocks Road in the south and will include a park 'n' ride facility for commuters.
- Park 'n' ride numbers will be finalised as part of detailed design.

Preliminary station design

Final station design will be in accordance with guidelines developed by the TransLink Transit Authority and Queensland Rail.

Station features will be refined during detailed design, but will typically include:

- 175-metre-long side platforms including an overhead walkway with stairs and lifts, a ticket office, passenger waiting facilities, electronic timetable information and other public amenities
- landscaping with native species and drought-resistant plants
- security cameras and emergency phones
- provision for bus/rail interchange facilities as required.

Moreton Bay Regional Council and Growth Management Queensland are working together to produce a master plan for future transit-oriented development outcomes around the Kallangur Station precinct.



Construction impacts

- Goodfellows Road will be permanently split just south of Duffield Road.
- A new vehicle overpass will be constructed on Goodfellows Road which will divert motorists along a new street between Goodfellows and Dohles Rocks Road. This will provide access to Kallangur Station and its park 'n' ride facilities.
- A new vehicle overpass will also be constructed on Dohles Rocks Road to cross the rail line.
- Access to Clyde Street will be restricted to entry only, requiring a new road link between Glendon Street and School Road.

Contact us

Moreton Bay Rail Link recognises the proximity of homes and businesses to the rail corridor. The project will carefully plan all work to ensure construction methodologies are chosen that limit the impact on the surrounding community as much as possible.

The project is committed to meaningful community engagement and encourages residents and businesses to contact the project team for more information.

Phone: 1800 096 821 *Free call within Australia. Higher rates apply from mobile phones and pay phones.*
Email: moretonbayrail@tmr.qld.gov.au
Website: www.tmr.qld.gov.au/moretonbayrail
Post: Moreton Bay Rail Link
Transport and Main Roads
Reply Paid 2439, Brisbane Qld 4001

Murrumba Downs Station

Moreton Bay Rail Link will deliver a 12.6 km dual-track rail line between Petrie and Kippa-Ring. Six new rail stations will be delivered as part of the project at Kallangur, Murrumba Downs, Mango Hill, Kinsellas Road, Rothwell and Kippa-Ring. Works will also be required at Petrie Station where the Moreton Bay Rail Link connects with the existing rail network.

These stations will incorporate a high level of security and visually appealing urban design.

Station access and parking

- A major park 'n' ride facility will be provided for commuters with vehicle access from Brays Road.
- Park 'n' ride numbers will be finalised as part of detailed design.
- Pedestrian access will also be possible from Masjakin Court.

Preliminary station design

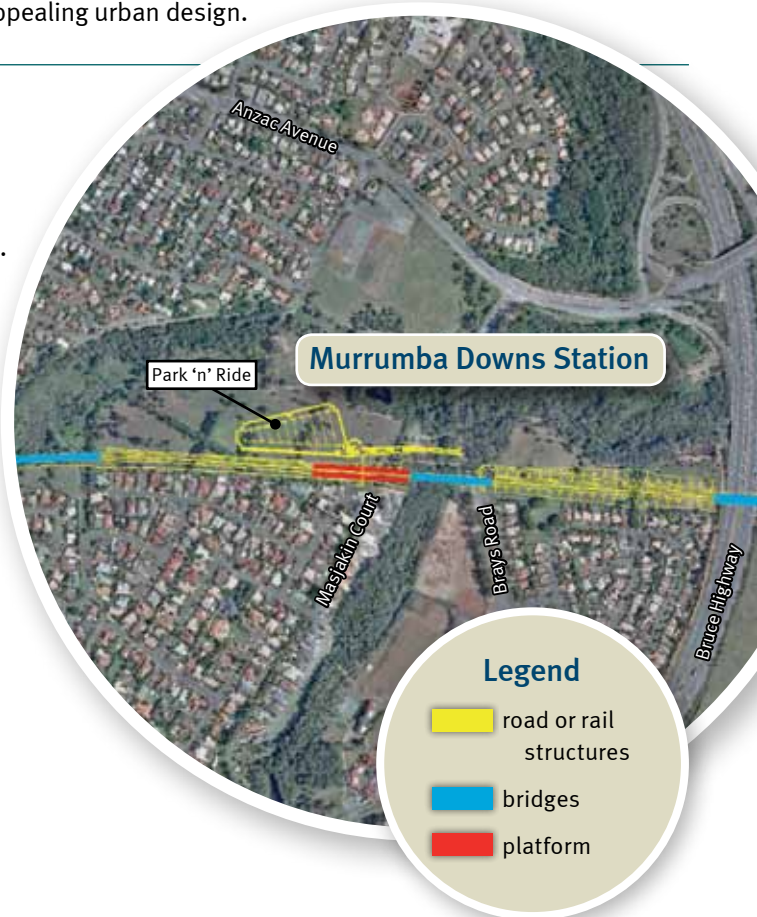
Final station design will be in accordance with guidelines developed by the TransLink Transit Authority and Queensland Rail.

Station features will be refined during detailed design, but will typically include:

- 175-metre-long side platforms, an overhead walkway with stairs and lifts, a ticket office, passenger waiting facilities, electronic timetable information and other public amenities
- landscaping with native species and drought-resistant plants
- security cameras and emergency phones
- provision for bus/rail interchange facilities as required.

Construction impacts

- A new rail bridge will be constructed across the Bruce Highway to connect Murrumba Downs Station to Mango Hill Station.
- The rail line will be raised on an embankment as it approaches the Bruce Highway in order to cross at sufficient height. Residents from Murrumba Downs Station to the highway can expect to see the embankment from their properties as it rises from approximately 3 metres to 10 metres.



Contact us

Moreton Bay Rail Link recognises the proximity of homes and businesses to the rail corridor. The project will carefully plan all work to ensure construction methodologies are chosen that limit the impact on the surrounding community as much as possible.

The project is committed to meaningful community engagement and encourages residents and businesses to contact the project team for more information.

Phone: 1800 096 821 *Free call within Australia. Higher rates apply from mobile phones and pay phones.*

Email: moretonbayrail@tmr.qld.gov.au

Website: www.tmr.qld.gov.au/moretonbayrail

Post: Moreton Bay Rail Link
Transport and Main Roads
Reply Paid 2439, Brisbane Qld 4001

Mango Hill Station

Moreton Bay Rail Link will deliver a 12.6 km dual-track rail line between Petrie and Kippa-Ring. Six new rail stations will be delivered as part of the project at Kallangur, Murrumba Downs, Mango Hill, Kinsellas Road, Rothwell and Kippa-Ring. Works will also be required at Petrie Station where the Moreton Bay Rail Link connects with the existing rail network. These stations will incorporate a high level of security and visually appealing urban design.

Station access and parking

- A small park 'n' ride facility will be provided for commuters with vehicle access from Halpine Drive.
- Park 'n' ride numbers will be finalised as part of detailed design.
- Bus/rail hub for North Lakes

Preliminary station design

Final station design will be in accordance with guidelines developed by the TransLink Transit Authority and Queensland Rail.

Station features will be refined during detailed design, but will typically include:

- 175-metre-long side platforms, an overhead walkway with stairs and lifts, a ticket office, passenger waiting facilities, electronic timetable information and other public amenities
- landscaping with native species and drought-resistant plants
- security cameras and emergency phones
- provision for bus/rail interchange facilities as required.

Construction impacts

- A new vehicle overpass will be constructed on Freshwater Creek Road to cross the rail line.
- Much of the rail line between the Bruce Highway and Mango Hill Station will lie within a cutting, slightly lower than the existing ground level. From the station, the rail line will cross the tip of Halpine Lake on a new bridge as it heads east in cutting towards Kinsellas Road.



Contact us

Moreton Bay Rail Link recognises the proximity of homes and businesses to the rail corridor. The project will carefully plan all work to ensure construction methodologies are chosen that limit the impact on the surrounding community as much as possible.

The project is committed to meaningful community engagement and encourages residents and businesses to contact the project team for more information.

Phone: 1800 096 821 *Free call within Australia. Higher rates apply from mobile phones and pay phones.*

Email: moretonbayrail@tmr.qld.gov.au

Website: www.tmr.qld.gov.au/moretonbayrail

Post: Moreton Bay Rail Link
Transport and Main Roads
Reply Paid 2439, Brisbane Qld 4001

Kinsellas Road Station

Moreton Bay Rail Link will deliver a 12.6 km dual-track rail line between Petrie and Kippa-Ring. Six new rail stations will be delivered as part of the project at Kallangur, Murrumba Downs, Mango Hill, Kinsellas Road, Rothwell and Kippa-Ring. Works will also be required at Petrie Station where the Moreton Bay Rail Link connects with the existing rail network.

These stations will incorporate a high level of security and visually appealing urban design.

Station access and parking

- A park 'n' ride facility will be provided for commuters with vehicle access from Kinsellas Road, in line with proposed residential developments in the area.
- Park 'n' ride numbers will be finalised as part of detailed design.

Preliminary station design

Final station design will be in accordance with guidelines developed by the TransLink Transit Authority and Queensland Rail.

Station features will be refined during detailed design, but will typically include:

- 175-metre-long side platforms, an overhead walkway with stairs and lifts, a ticket office, passenger waiting facilities, electronic timetable information and other public amenities
- landscaping with native species and drought-resistant plants
- security cameras and emergency phones
- provision for bus/rail interchange facilities as required.

Construction impacts

- A new vehicle overpass will be constructed on Kinsellas Road East to cross the rail line.
- The project is working closely with the Moreton Bay Regional Council to make the best use of the station and new road accesses.

Contact us

Moreton Bay Rail Link recognises the proximity of homes and businesses to the rail corridor. The project will carefully plan all work to ensure construction methodologies are chosen that limit the impact on the surrounding community as much as possible.

The project is committed to meaningful community engagement and encourages residents and businesses to contact the project team for more information.

Phone: 1800 096 821 *Free call within Australia. Higher rates apply from mobile phones and pay phones.*

Email: moretonbayrail@tmr.qld.gov.au

Website: www.tmr.qld.gov.au/moretonbayrail

Post: Moreton Bay Rail Link
Transport and Main Roads
Reply Paid 2439, Brisbane Qld 4001



Rothwell Station

Moreton Bay Rail Link will deliver a 12.6 km dual-track rail line between Petrie and Kippa-Ring. Six new rail stations will be delivered as part of the project at Kallangur, Murrumba Downs, Mango Hill, Kinsellas Road, Rothwell and Kippa-Ring. Works will also be required at Petrie Station where the Moreton Bay Rail Link connects with the existing rail network.

These stations will incorporate a high level of security and visually appealing urban design.

Station access and parking

- A park 'n' ride facility will be provided for commuters with vehicle access planned from an extension to McKillop Street and a new road link via Gynther Road and Buchanan Street.
- Park 'n' ride numbers will be finalised as part of detailed design.

Preliminary station design

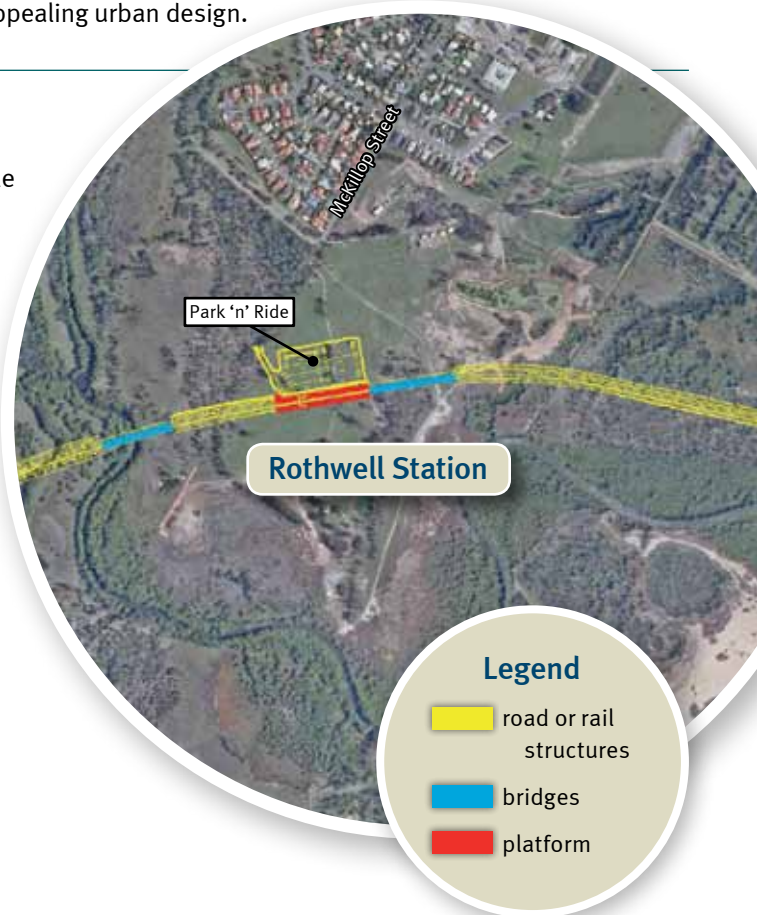
Final station design will be in accordance with guidelines developed by the TransLink Transit Authority and Queensland Rail.

Station features will be refined during detailed design, but will typically include:

- 175-metre-long side platforms, an overhead walkway with stairs and lifts, a ticket office, passenger waiting facilities, electronic timetable information and other public amenities
- landscaping with native species and drought-resistant plants
- security cameras and emergency phones
- provision for bus/rail interchange facilities as required.

Environmental impacts

- The project recognises the rail corridor is in close proximity to the conservation wetlands around Hays Inlet.
- The project team is working closely with state and federal environmental agencies to ensure that appropriate construction methodologies are chosen to minimise any further potential impacts.



Contact us

Moreton Bay Rail Link recognises the proximity of homes and businesses to the rail corridor. The project will carefully plan all work to ensure construction methodologies are chosen that limit the impact on the surrounding community as much as possible.

The project is committed to meaningful community engagement and encourages residents and businesses to contact the project team for more information.

Phone: 1800 096 821 *Free call within Australia. Higher rates apply from mobile phones and pay phones.*

Email: moretonbayrail@tmr.qld.gov.au

Website: www.tmr.qld.gov.au/moretonbayrail

Post: Moreton Bay Rail Link
Transport and Main Roads
Reply Paid 2439, Brisbane Qld 4001

Kippa-Ring Station

Moreton Bay Rail Link will deliver a 12.6 km dual-track rail line between Petrie and Kippa-Ring. Six new rail stations will be delivered as part of the project at Kallangur, Murrumba Downs, Mango Hill, Kinsellas Road, Rothwell and Kippa-Ring. Works will also be required at Petrie Station where the Moreton Bay Rail Link connects with the existing rail network.

These stations will incorporate a high level of security and visually appealing urban design.

Station access and parking

- A park 'n' ride facility will be provided for commuters with vehicle access from Anzac Avenue and Hercules Road.
- Park 'n' ride numbers will be finalised as part of detailed design.

Preliminary station design

Final station design will be in accordance with guidelines developed by the TransLink Transit Authority and Queensland Rail.

Station features will be refined during detailed design, but will typically include:

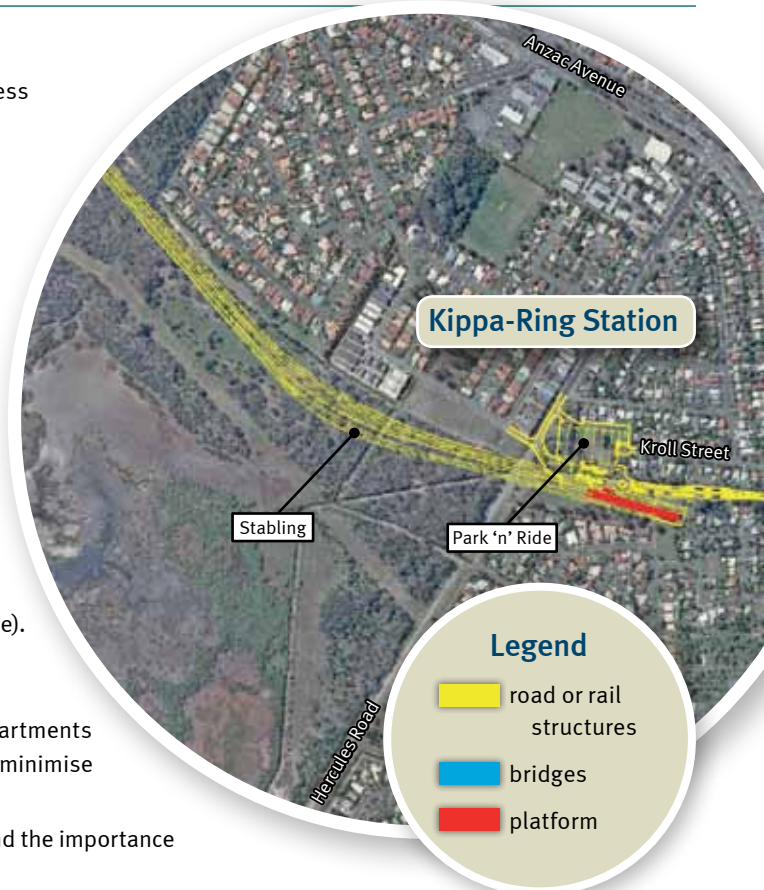
- a 175-metre-long central platform, a ticket office, passenger waiting facilities, electronic timetable information and other public amenities
- landscaping with native species and drought-resistant plants
- security cameras and emergency phones
- provision for bus/rail interchange facilities as required
- provision for stabling near Fleet Drive (for trains when they are not in use).

Environmental impacts

- The project is working closely with state and federal environment departments to ensure that appropriate construction methodologies are chosen to minimise any potential impacts.
- The project recognises its proximity to the koala habitats in this area and the importance of ensuring connectivity between wildlife habitats.
- Provisions for safe wildlife crossings under the rail line will be provided to ensure habitats are not cut off and become isolated.

Construction impacts

- Hercules Road will be extended to link up with Anzac Avenue between Kroll Street and Lions Crescent.
- Road works will also be undertaken on Kroll Street close to the Kippa-Ring Station.



Contact us

Moreton Bay Rail Link recognises the proximity of homes and businesses to the rail corridor. The project will carefully plan all work to ensure construction methodologies are chosen that limit the impact on the surrounding community as much as possible.

The project is committed to meaningful community engagement and encourages residents and businesses to contact the project team for more information.

Phone: 1800 096 821 *Free call within Australia. Higher rates apply from mobile phones and pay phones.*

Email: moretonbayrail@tmr.qld.gov.au

Website: www.tmr.qld.gov.au/moretonbayrail

Post: Moreton Bay Rail Link
Transport and Main Roads
Reply Paid 2439, Brisbane Qld 4001