

**South East Queensland Cycle Network Program
Capital Grants Projects 2010-2011**

BRISBANE CITY COUNCIL

Bicentennial Bikeway Hale Street Missing Link West Stage 1	3
Wynnum Road Bikeway – Stage 2	4

GOLD COAST CITY COUNCIL

Darren Smith Memorial Route Upgrade Design	5
Loders Creek Pathways Feasibility and Preliminary Design	6
Southport Bikeway – Wardoo Street	7
V1 and Darren Smith Memorial Route Signage	8

IPSWICH CITY COUNCIL

Clem Street Bikeway	9
Goodna Creek Regional Bikeway - Stage 1 (Redbank Plains Recreation Reserve)	10

LOGAN CITY COUNCIL

East West Cycle Route – Green Road to Boronia Bushland	11
East West CycleRoute – Planning and Design of the Second Avenue to Demeio	
Park Bikeway	12
Logan Central Cycle Route – Stage 4 (Design)	13
Planning of Cusack Lane Bikeway – Jimboomba to Flagstone	14
Springwood Cycle Route – Planning and Design of the Springwood Bus Station to Parfrey Road Connection	15
Wembley Road Cycle Route – Campden Street to Logan Motorway	16

MORETON BAY REGIONAL COUNCIL

Morayfield Road Cycleway – Stage 2	17
--	----

SUNSHINE COAST REGIONAL COUNCIL

Ballinger Road Shared Path and On-Road Cycle Lanes	18
Beckmans Road Cycle Lanes – Stage 1	19
Kalana Road Shared Path	20
Maroochy Coulevard Cycle Lanes	21
Noosa Drive Shared Path – Western Section Stage 1	22
Park Road Cycleway – Stage 2	23
Perwillowen Road Cycle Lanes	24
Petrie Creek Road – Stage 1	25
Sunshine Coast Motorway Shared Path	26
Tanawah Tourist Drive	27

TOOWOOMBA REGIONAL COUNCIL

East Creek Crossing Upgrades	28
Southwest Corridor Design	29
Southwest Corridor – Drayton Road and Luck Street Bikelanes	30
West Creek Crossing Upgrades	31
West Creek Lighting – Long Street to James Street	32

BICENTENNIAL BIKEWAY – HALE STREET MISSING LINK WEST STAGE 1

PROJECT DESCRIPTION

The Bicentennial Bikeway is located along the Brisbane River between Toowong and the Brisbane Central Business District. This bikeway is one of the most highly utilised pedestrian and cyclist (both recreational and commuter) routes in south east Queensland. Due to sustained growth in usage since its construction in 1988, the Bicentennial Bikeway is now operating at full capacity. The level of shared path conflict and impacts to pathway safety and efficiency is a concern shared by Council and the bikeway users. It is for user safety and capacity reasons that the Bicentennial Bikeway needs to be widened and upgraded from a shared pathway to a separated pathway.

Project works include 246 metres of off road pathway along the Brisbane River from Hale Street to Cribb Street. The link will be a 5.5 metre wide separated concrete pathway (3.5 metre for cycling, 2.0 metre for walking). The project will also include lighting, signage, retaining walls and a bike shelter.

In 2006-07, Cycle Network Program provided \$100,000 funding to Council for the Design and Feasibility of the progressive widening of Bicentennial Bikeway.

In 2007-08, Cycle Network Program provided \$100,000 funding to Council for the Design and Feasibility of the Bicentennial Bikeway – Stage 1 upgrade.

In 2008-09, Cycle Network Program provided \$1 million funding to council for the construction of Bicentennial Bikeway - Stage 1 upgrade.

In 2009-10, Transport and Main Roads provided \$2,062,500 funding to council for the construction of Bicentennial Bikeway – Stage 2 upgrade.

In 2011-12, Brisbane City Council have indicated that they plan to complete the link between Lang Parade and Park Street (Bicentennial Bikeway – Stage 3).

This project is part of the cycle network identified in the *South East Queensland Principal Cycle Network Plan*.

TRIP ATTRACTORS

- Milton Business Centre
- Suncorp Stadium
- Milton Railway Station
- Kuripla Point Park
- Brisbane Cultural Centre
- Milton PCYC

FUNDING

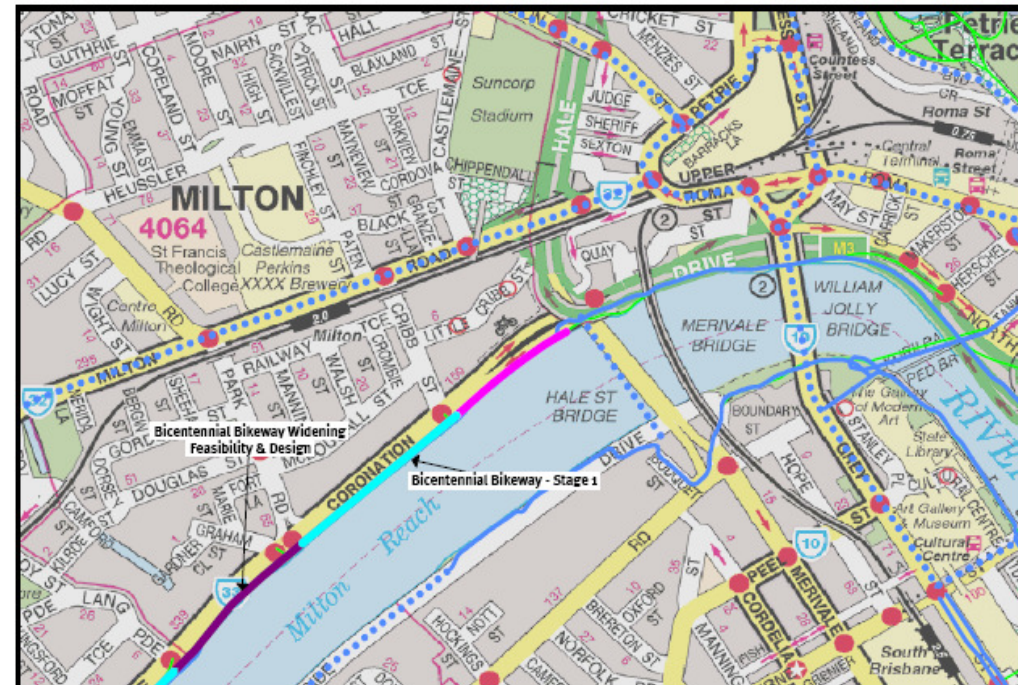
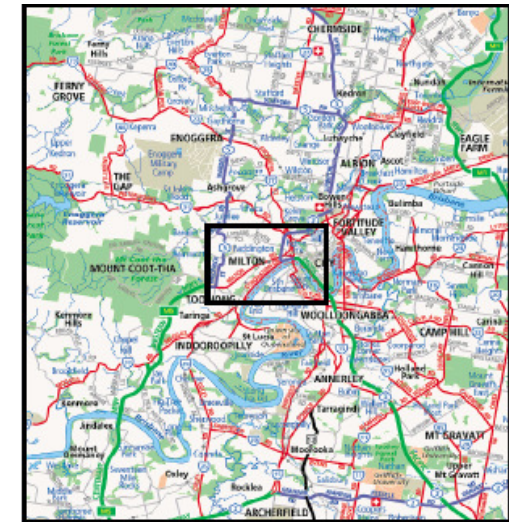
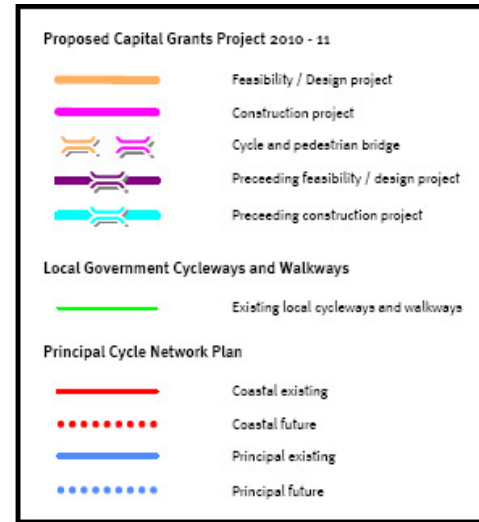
The project estimate is \$2,750,000.

Brisbane City Council has committed \$1,375,000 to this project and is requesting:

- \$1,375,000 as a 2010-11 Capital Grant from the Cycle Network Program.

POLITICAL REPRESENTATION

- Federal – Hon Arch Bevis MP [Brisbane]
- State – Hon Andrew Fraser MP [Mount Coot-tha] & Ms Grace Grace MP [Brisbane Central]
- Local – Cr Peter Matic [Toowong]



WYNNUM ROAD BIKEWAY – STAGE 2

PROJECT DESCRIPTION

Wynnum Road is a major commuter route from the eastern suburbs of the city to the Brisbane CBD. The completion of this missing link in the Wynnum Road bikeway will greatly improve cycling access between the bay side suburbs and central business district, as well as to the Gateway Upgrade Project (GUP) pedestrian/bicycle path.

Wynnum Road is a major barrier to more cycling in the eastern suburbs and this project will greatly address existing safety issues.

Project works will include 1450 metres of off-road pathway 3 metre wide between Bogнар Street and Manly Road. The project will also include a 35 metre bridge, signage and lighting.

In 2009-10, the Cycle Network Program provided \$500,000 funding to council for the construction of Wynnum Road Bikeway – Stage 1 upgrade.

This project forms part of the cycle network identified in the *South East Queensland Principal Cycle Network Plan*.

TRIP ATTRACTORS

- Bayside College
- Tingalpa Primary School
- Bogнар Street Shopping Centre
- Kianawah Park
- Australian Crawl Fitness

FUNDING

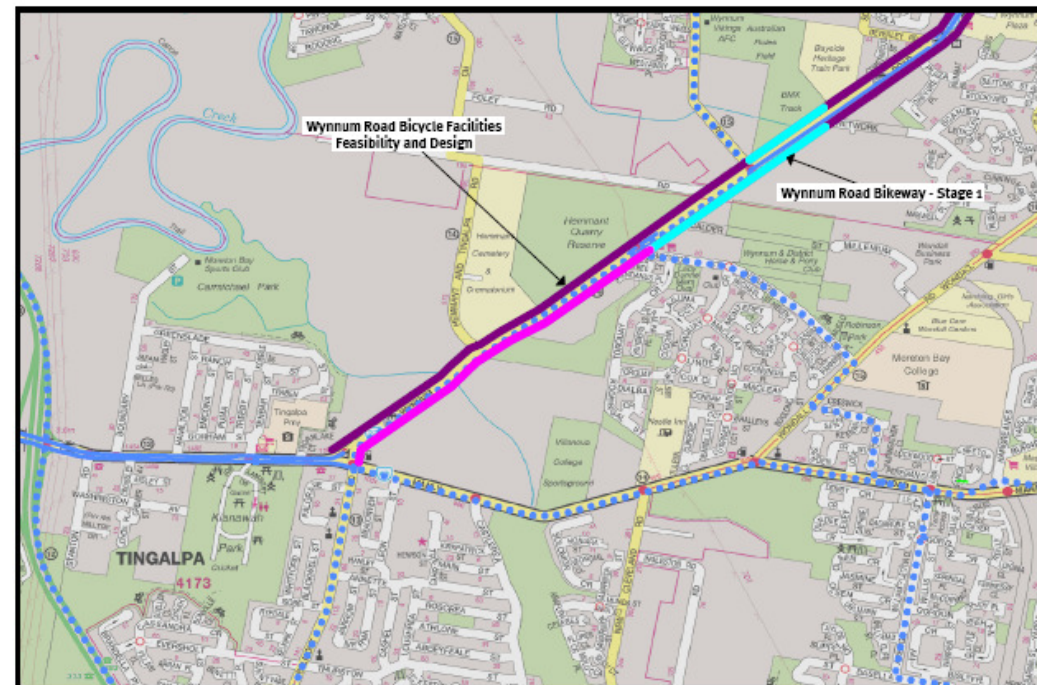
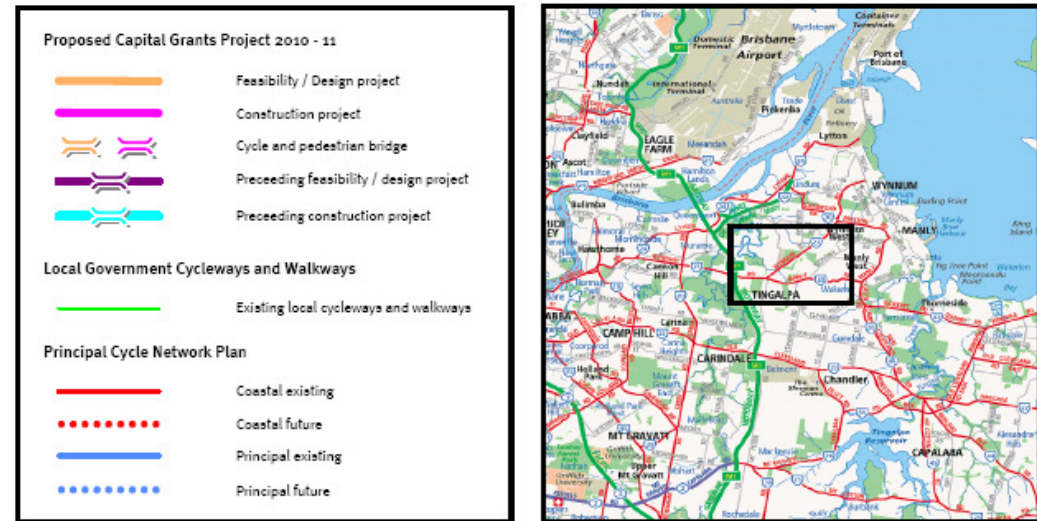
The project estimate is \$3,828,000.

Brisbane City Council has committed \$1,914,000 to this project and is requesting:

- \$1,914,000 as a 2010-11 Capital Grant from the Cycle Network Program.

POLITICAL REPRESENTATION

- Federal – Ms Kerry Rea MP [Bonner]
- State – Hon Paul Lucas MP [Lytton] & Mr Steven Kilburn MP [Chatsworth]
- Local – Cr John Campbell [Doboy] & Cr Peter Cumming [Wynnum Manly]



DARREN SMITH MEMORIAL ROUTE UPGRADE DESIGN – WATERWAYS DRIVE WIDENING

PROJECT DESCRIPTION

This project will involve the detailed design of road widening and construction of 850 metres of 1.2 metre wide (minimum) cycle lanes along Waterways Drive. Project works may also include signage and lighting.

This project will provide the design for missing cycle infrastructure along a critical and popular route, improving safety and encouraging cyclists.

This project links to a part of the cycle network identified in the *South East Queensland Principal Cycle Network Plan*.

TRIP ATTRACTORS

- Main Beach Shops
- Bus Stops
- Planned future Gold Coast Tram Stop
- Southport Yacht club
- Local Beaches
- Local Sporting and Recreational Facilities

FUNDING

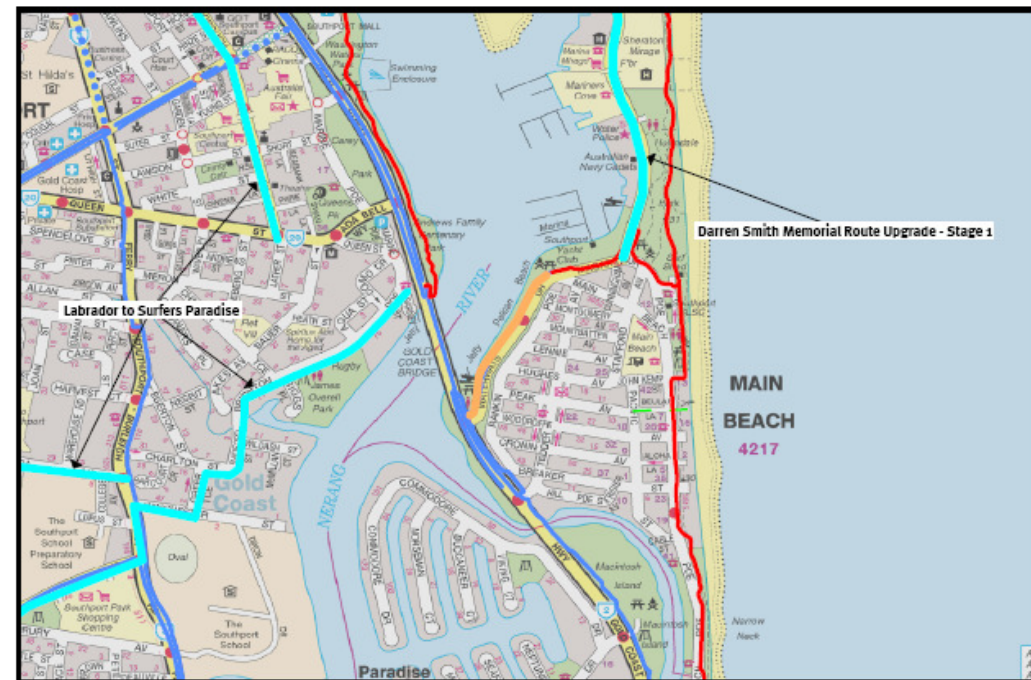
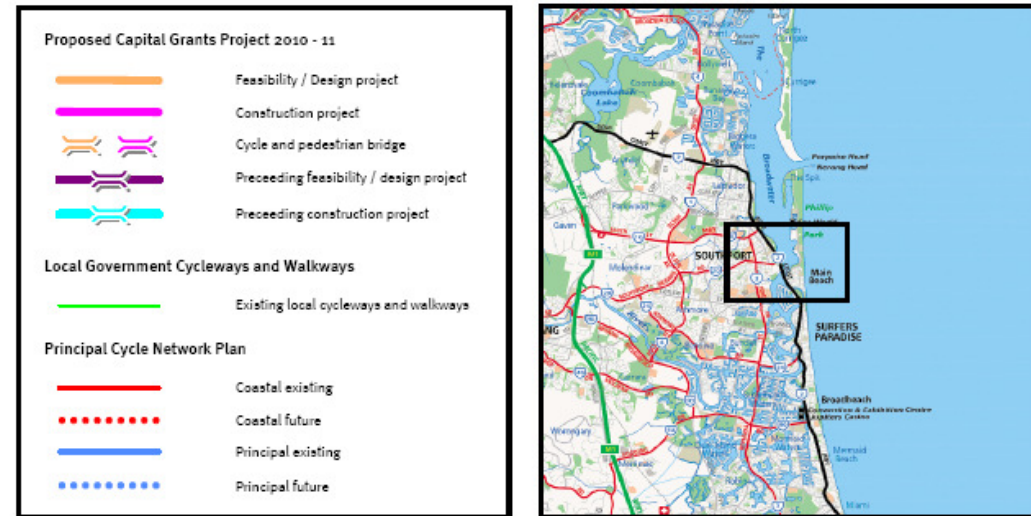
The project estimate is \$44,000.

Gold Coast City Council has committed \$22,000 to this project and is requesting:

- \$22,000 as a 2010-11 Capital Grant from the Cycle Network Program.

POLITICAL REPRESENTATION

- Federal – Mr Steven Ciobo MP [Moncrieff]
- State – Hon John-Paul Langbroek MP [Surfers Paradise]
- Local – Cr Susie Douglas [Division 7]



LODERS CREEK PATHWAYS FEASIBILITY AND PRELIMINARY DESIGN

PROJECT DESCRIPTION

This project will provide links between several existing cycle pathways, providing greater connectivity and access to schools, commercial and industrial areas and recreational facilities.

Project works include a feasibility study and the design of preliminary plans for 3200 metres of 3.0 metre wide shared pathways on the western, northern and southern sides of Loders Creek from Queen Street, Wardoo Street to Smith Street, Southport. The project may include a bridge, signage and lighting.

This project links to a part of the cycle network identified in the *South East Queensland Principal Cycle Network Plan*.

TRIP ATTRACTORS

- Southport Primary School
- St Hilda's School
- Southport High School
- Future Tram Station
- Disaster Emergency Response Centre
- Industrial Areas
- Recreational Facilities

FUNDING

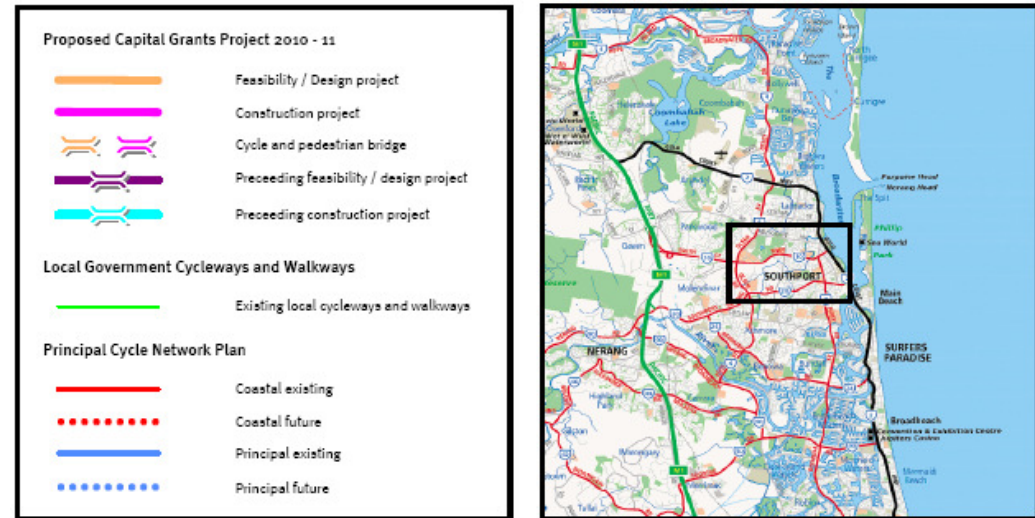
The project estimate is \$110,000.

Gold Coast City Council has committed \$55,000 to this project and is requesting:

- \$55,000 as a 2010-11 Capital Grant from the Cycle Network Program.

POLITICAL REPRESENTATION

- Federal – Mr Steven Ciobo MP [Moncrieff]
- State – Hon Peter Lawlor MP [Southport]
- Local – Cr Dawn Chrichlow [Division 6]



SOUTHPORT BIKEWAY – WARDOO STREET

PROJECT DESCRIPTION

This project will provide an important link between existing shared pathways along Wardoo Street. This link will provide a continuous corridor, providing a safe, separate linkage to industrial areas, workplaces, schools, a university, community centres, parks and residential areas.

Project works include a 3 metre wide, 670 metre long off-road shared pathway on the west side of Wardoo Street between the traffic lights at Southport- Nerang Road and the traffic lights at Firestone Street. Project works include signage and lighting.

This project is part of the cycle network identified in the *South East Queensland Principal Cycle Network Plan*.

TRIP ATTRACTORS

- Southport Primary School
- Salvation Army
- Industrial Area
- Gold Coast City Council Depot
- Ambulance, Fire and RACQ depots
- Gold Coast Rapid Transit Station (planned)

FUNDING

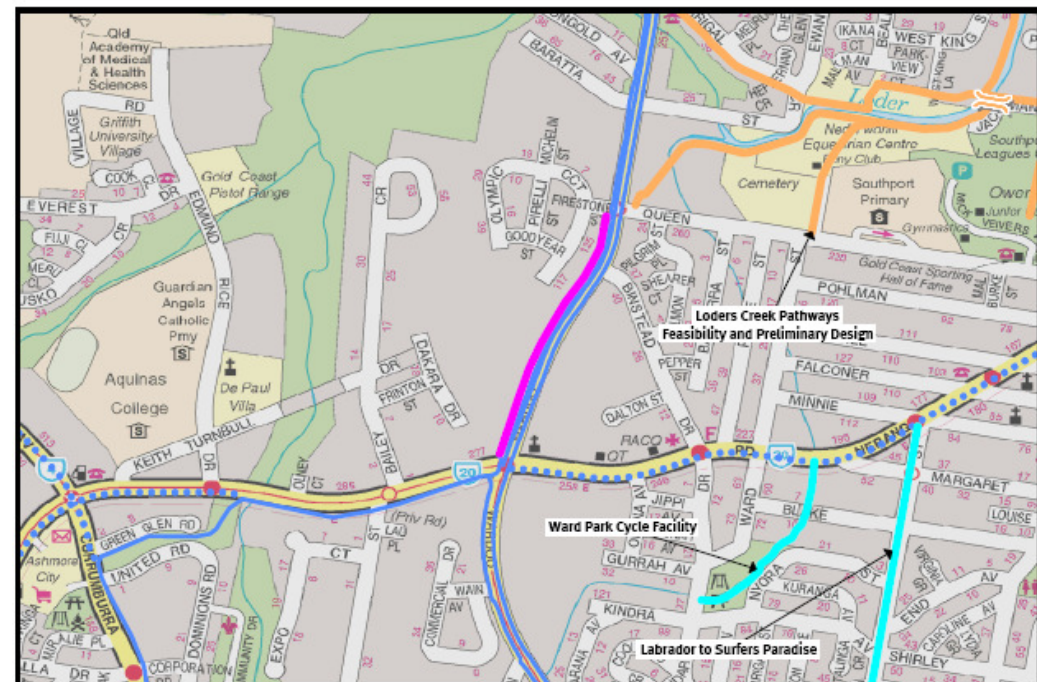
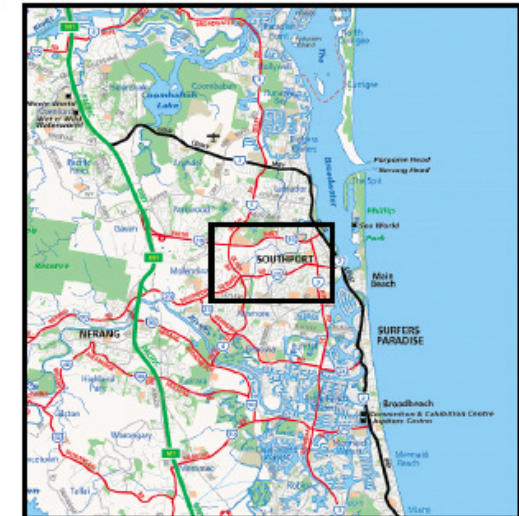
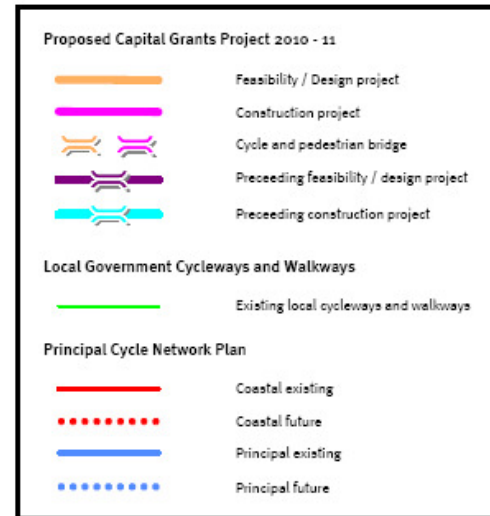
The project estimate is \$253,000.

Gold Coast City Council has committed \$126,500 to this project and is requesting:

- \$126,500 as a 2010-11 Capital Grant from the Cycle Network Program.

POLITICAL REPRESENTATION

- Federal – Mr Stuart Robert MP [Fadden]
- State – Hon Peter Lawlor MP [Southport]
- Local – Cr Dawn Crichlow [Division 6]



V1 AND DARREN SMITH MEMORIAL ROUTE SIGNAGE

PROJECT DESCRIPTION

This project will review the entire 2 routes and complete all the signage along the V1 and Darren Smith Memorial routes. Most of it will be for G8-15 style signage at the major intersections. But there will also be all the signage needed on the twists and turns at places like the Coomera River where people who don't know the route tend to get lost. Approximately 100 signs for each route are required.

This project links to a part of the cycle network identified in the *South East Queensland Principal Cycle Network Plan*.

TRIP ATTRACTORS

- Local Shops
- Local Transport Nodes
- Planned future Gold Coast Tram Stop
- Local Primary and High Schools
- Southport Yacht club
- Local Beaches
- Local Sporting and Recreational Facilities

FUNDING

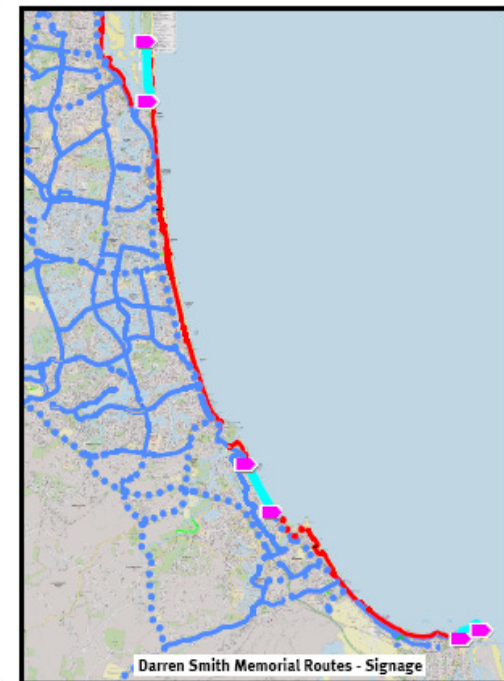
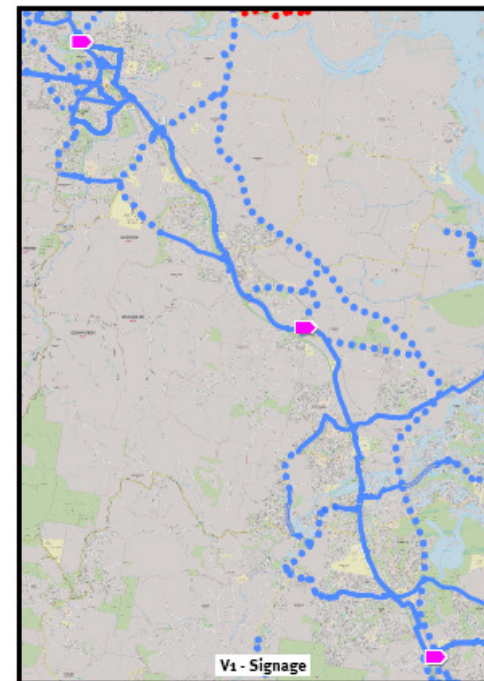
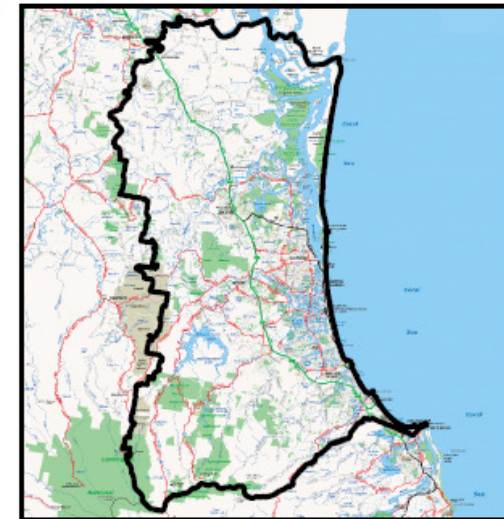
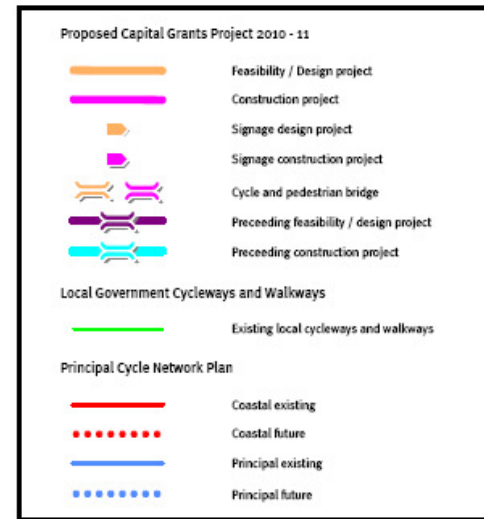
The project estimate is \$110,000.

Gold Coast City Council has committed \$55,000 to this project and is requesting:

- \$55,000 as a 2010-11 Capital Grant from the Cycle Network Program.

POLITICAL REPRESENTATION

- Federal – Mr Steven Ciobo MP [Moncrieff], Mr Stuart Robert MP [Fadden] & Mrs Margaret May MP [McPherson]
- State – Mr John-Paul Langbroek MP [Surfers Paradise], Hon Margaret Keech MP [Albert], Ms Peta-Kaye Croft MP [Broadwater], Mrs Christine Smith MP [Burleigh], Mrs Jann Stuckey MP [Currumbin], Dr Alex Douglas MP [Gaven], Mr Ray Stevens MP [Mermaid Beach] & Hon Peter Lawler MP [Southport]
- Local – All Divisions



CLEM STREET BIKEWAY

PROJECT DESCRIPTION

This project will provide an important link between Pine Mountain Road (one of North Ipswich's key arterial roads) and the Brassall Bikeway (a 2008/09 Cycle Network Program funded project). This link will significantly extend the range of the existing bikeway, providing a safe, separate linkage to Ipswich's northern suburbs including rail transport, local schools, recreational and residential areas.

Project works include a 3 metre wide, 520 metre long off-road shared pathway on the western side of Mihi Creek and Clem Street between Pine Mountain Road and the Brassall Bikeway. The project will include a bridge, lighting and signage.

In 2009/10, the Cycle Network Program contributed \$50,000 for detailed design plans of the Clem Street Link.

This project is part of the cycle network identified in the *South East Queensland Principal Cycle Network Plan*.

TRIP ATTRACTORS

- Brassall Primary School
- St Josephs Catholic School
- Ipswich High School
- Ipswich Adventist Primary
- Brassall Central Business District
- The Workshops Rail Museum

FUNDING

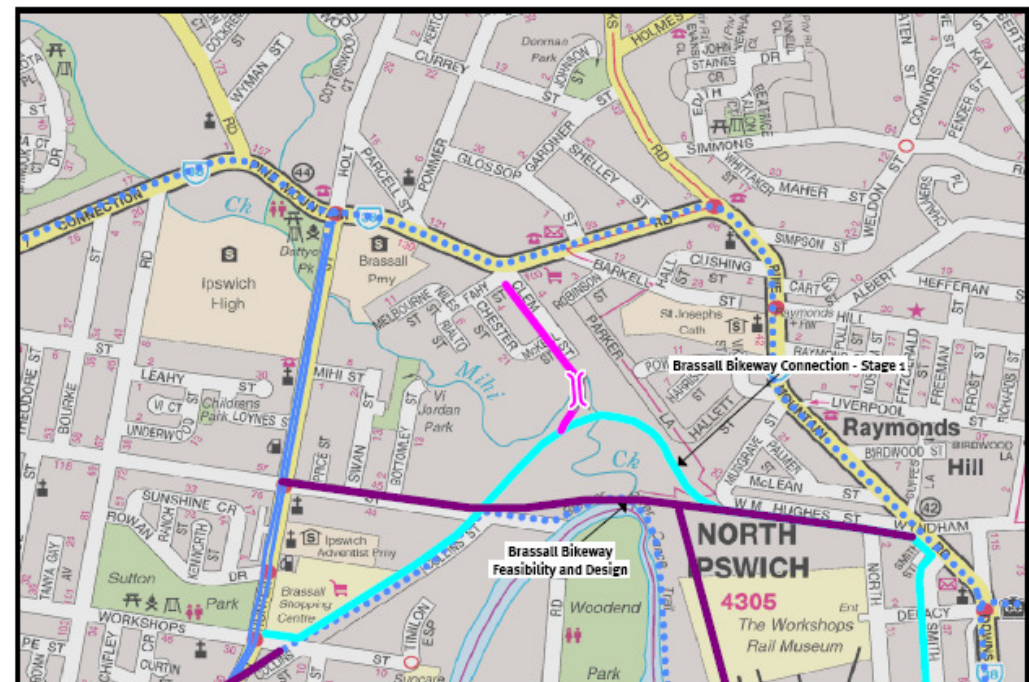
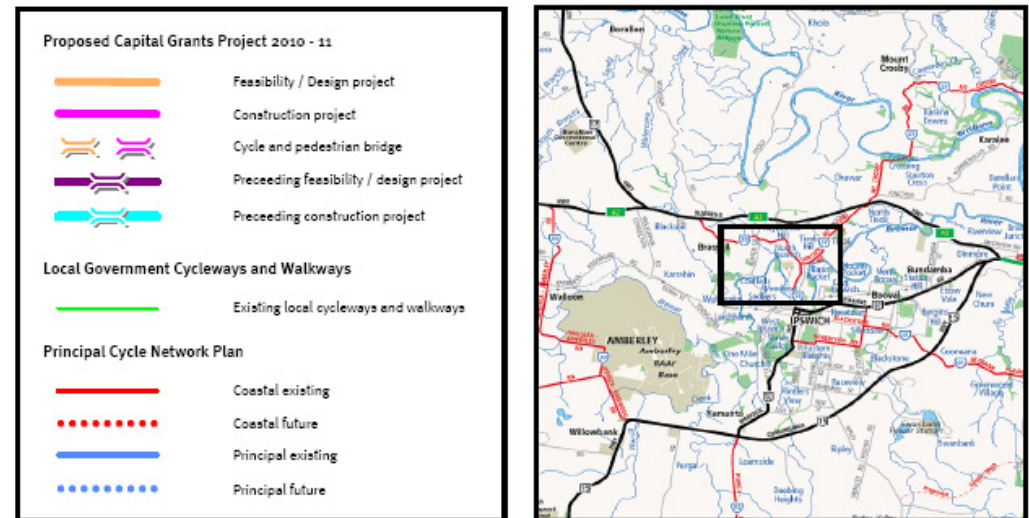
The project estimate is \$950,000.

Ipswich City Council has committed \$475,000 towards this project and is requesting:

- \$475,000 as a 2010-11 Capital Grant from the Cycle Network Program.

POLITICAL REPRESENTATION

- Federal – Mr Bernie Ripoll MP [Oxley]
- State – Mr Wayne Wendt MP [Ipswich West]
- Local – Cr Cheryl Bromage [Division 6]



GOODNA CREEK REGIONAL BIKEWAY – STAGE 1 (REDBANK PLAINS RECREATION RESERVE)

PROJECT DESCRIPTION

This project involves the construction of an off-road pathway from Willow Road to Redbank Plains Road through the Redbank Plains Recreation Reserve. This project will connect Redbank Plains to Stage 2 (a future submission) which will connect Redbank via Collingwood Park. The Goodna Creek Regional Bikeway will deliver a high quality cycling facility, linking a broad range of community facilities through an area of high amenity, via a quality linked pathway system.

Project works include 1050 metres of off-road pathway that is 4 metres wide, and includes signage and lighting.

In 2008/09, the Cycle Network Program contributed \$82,500 for the development of preliminary planning for this project.

In 2009/10, the Cycle Network Program contributed \$100,000 for detailed design plans for the Goodna Creek Regional Bikeway.

This project is part of the cycle network identified in the *South East Queensland Principal Cycle Network Plan*.

TRIP ATTRACTORS

- Redbank Plains High School
- Redbank Plains Library
- Redbank Plains Shopping Centre
- Redbank Plains Recreation Reserve

FUNDING

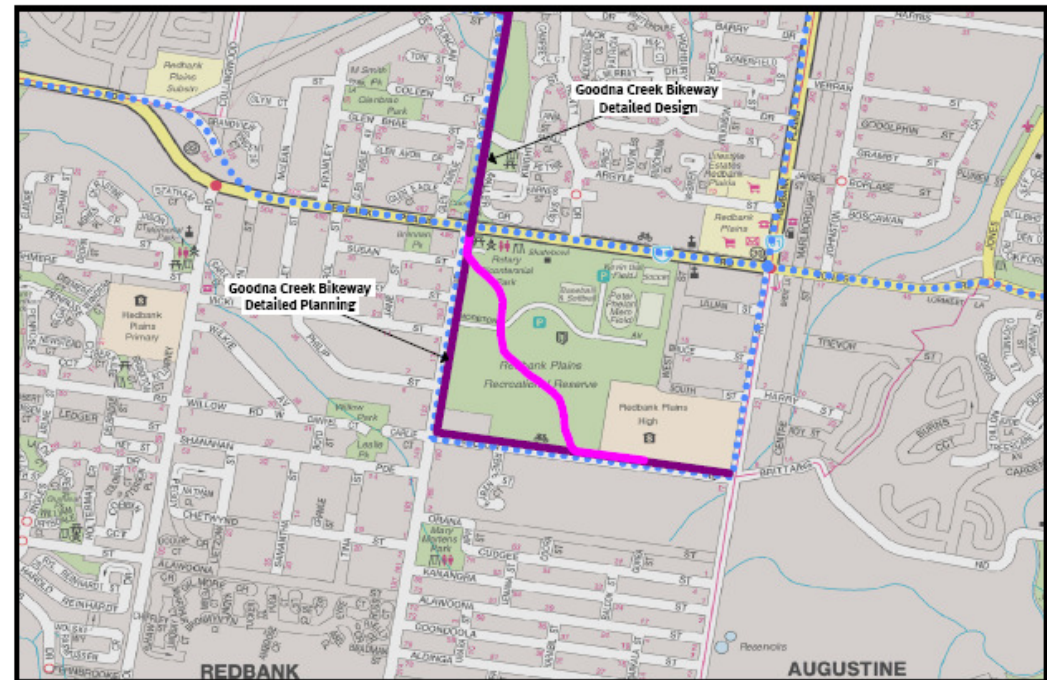
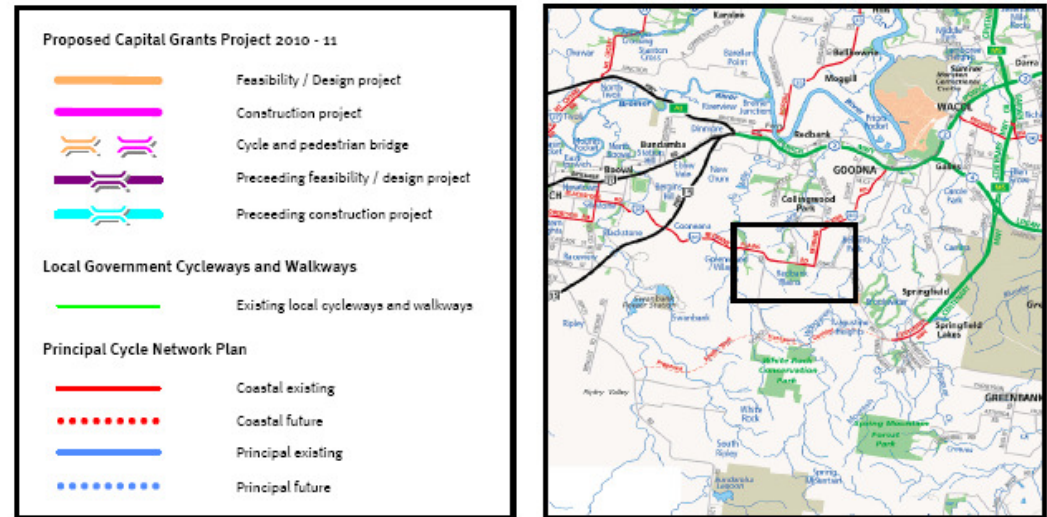
The project estimate is \$800,000.

Ipswich City Council has committed \$400,000 towards the project and is requesting:

- \$400,000 as a 2010-11 Capital Grant from the Cycle Network Program.

POLITICAL REPRESENTATION

- Federal – Mr Bernie Ripoll MP [Oxley]
- State – Mrs Jo-Ann Miller MP [Bundamba]
- Local – Cr Victor Attwood [Division 3]



EAST WEST CYCLE ROUTE – GREEN ROAD TO BORONIA BUSHLAND

PROJECT DESCRIPTION

This project involves the construction of an off-road bikeway from Green Road, along the East and West Service Roads, through new parkland connecting to existing cycle infrastructure in the Boronia Bushland Reserve. The project will link to the 2006/07 Capital Works funded Green Road Underpass project and provide connectivity between existing pathways, allowing access to local schools, shopping centres and recreational reserves.

The project design brief will provide connectivity between transport, educational, shopping, employment and recreational facilities in Springwood, Slacks Creek and Rochdale South.

Project works include 800 metres of off-road bikeway, 2.5 metres wide and will include signage and lighting.

This project forms part of the cycle network identified in the *South East Queensland Principal Cycle Network Plan*.

TRIP ATTRACTORS

- Regents Park Primary School
- Boronia Heights Primary School
- Boronia Park Shopping Village
- Recreational Reserves

FUNDING

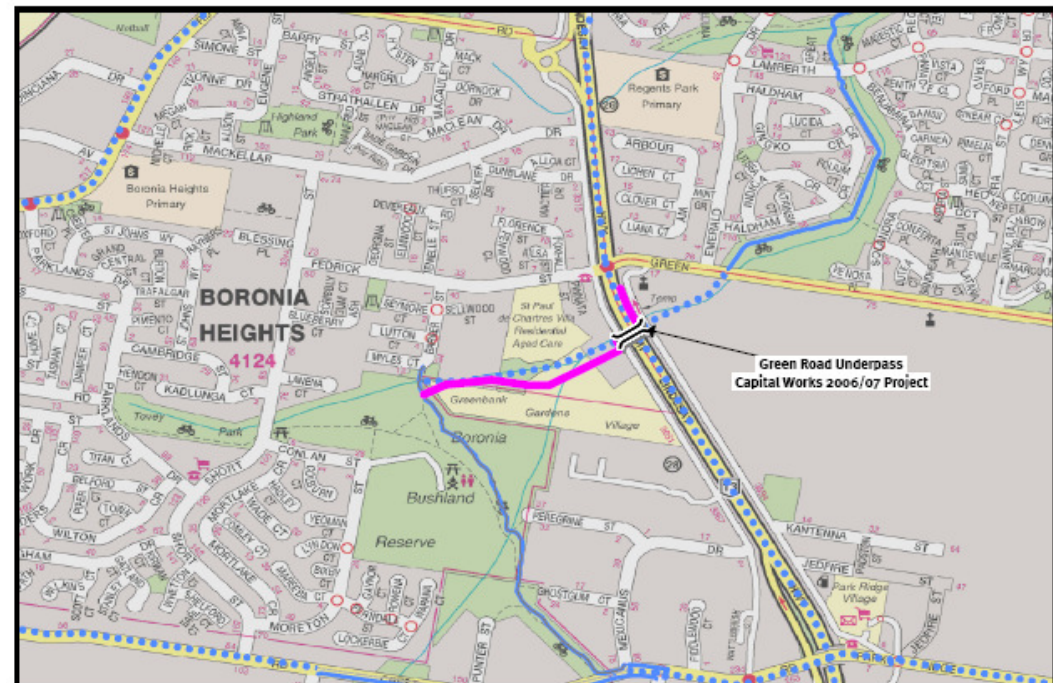
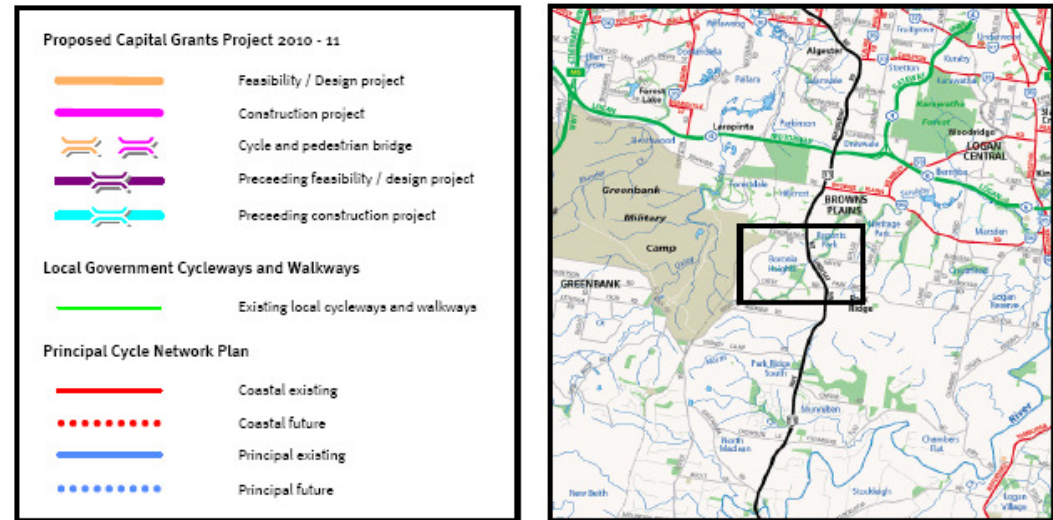
The project estimate is \$660,000.

Logan City Council has committed \$330,000 to this and is requesting:

- \$330,000 as a 2010-11 Capital Grant from the Cycle Network Program.

POLITICAL REPRESENTATION

- Federal – Mr Brett Raguse MP [Forde]
- State – Hon John Mickel MP [Logan]
- Local – Cr Cherie Dalley [Division 8] & Cr Lynne Clarke [Division 7]



EAST WEST CYCLE ROUTE – PLANNING AND DESIGN OF THE SECOND AVENUE TO DEMEIO PARK BIKEWAY

PROJECT DESCRIPTION

This project involves the design of a bikeway along the eastern verge of Demeio Road between Second Avenue and Demeio Park, Marsden.

The project design brief will provide connectivity between Berrinba Wetlands and the recently extended section of Second Avenue west of Third Ave, forming part of East West Cycle Route. Planning will also include consideration of a north link to the shared pathway along Third Avenue at Logan Mwy underpass (providing direct link from East West Route to Logan Central via Bardon Rd).

Project planning and design include 500 metres of off-road shared pathway, 2.5 metres wide and will include signage and lighting.

This project forms part of the cycle network identified in the *South East Queensland Principal Cycle Network Plan*.

TRIP ATTRACTORS

- Community Welfare Association
- Berrinba Industrial Estate
- Demeio Park
- Berrinba Wetlands
- Apex Park
- Marsden Golf Range

FUNDING

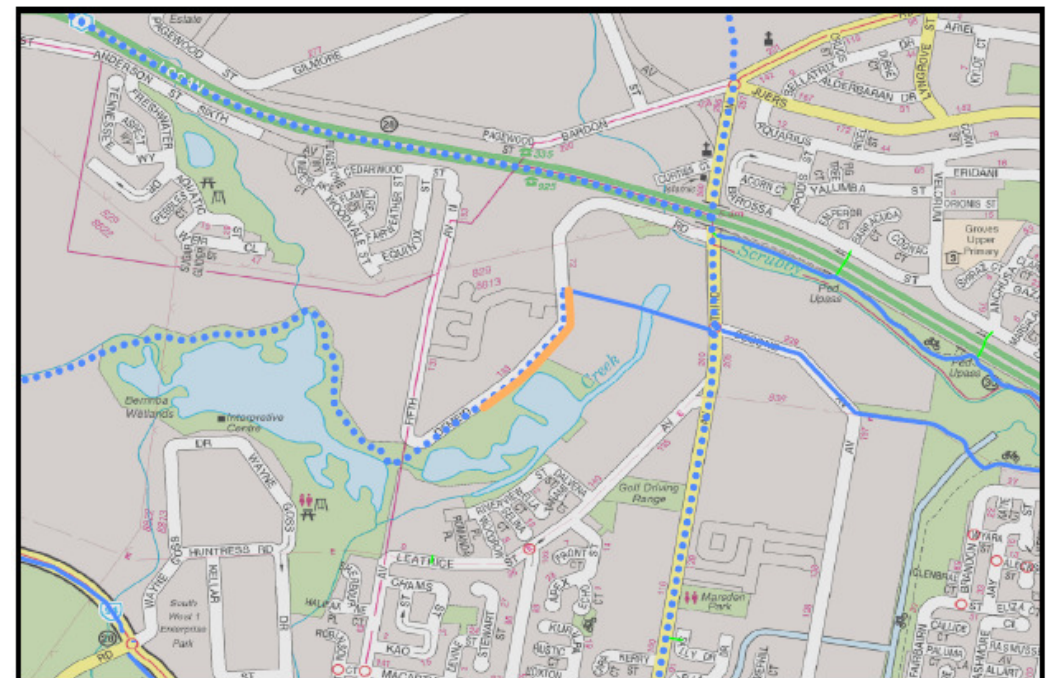
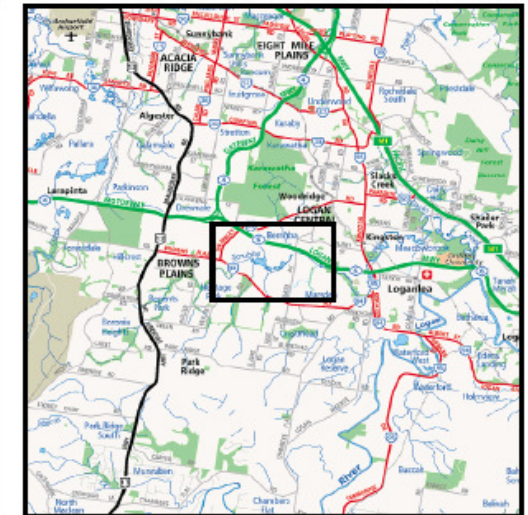
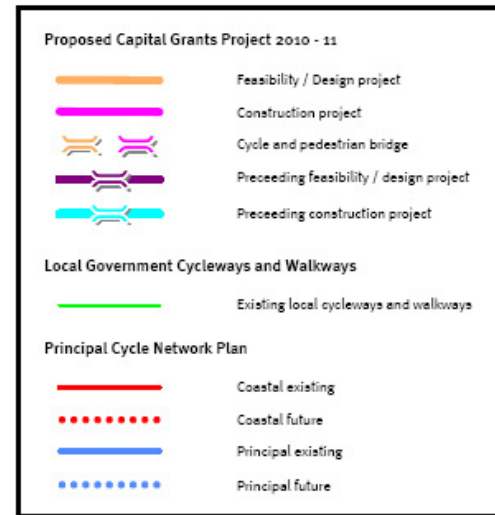
The project estimate is \$44,000.

Logan City Council has committed \$22,000 to this and is requesting:

- \$22,000 as a 2010-11 Capital Grant from the Cycle Network Program.

POLITICAL REPRESENTATION

- Federal – Hon Dr Craig Emerson MP [Rankin]
- State – Mrs Desley Scott MP [Woodridge]
- Local – Cr Graham Able [Division 5]



LOGAN CENTRAL CYCLE ROUTE – STAGE 4 (DESIGN)

PROJECT DESCRIPTION

This project involves the design of an uncompleted section of the Logan Central Bikeway between Baker Street to Allgas Street via Compton Road, including a bridge over Scrubby Creek. The project design brief will provide connectivity between transport, educational, shopping, employment and recreational facilities in Springwood, Slacks Creek and Rochdale South.

Project works include the design of 600 metres of off-road bikeway, 2.0-3.0 metres wide and will include a bridge, signage and lighting.

In 2006-07, the Cycle Network Program contributed \$459,500 towards the construction of Logan Central Cycle Route – Stage 1.

In 2007-08, the Cycle Network Program contributed \$90,000 towards the construction of Logan Central Cycle Route – Stage 2.

In 2008-09, the Cycle Network Program contributed \$204,500 towards the construction of Logan Central Cycle Route – Stage 3. This project forms part of the cycle network identified in the *South East Queensland Principal Cycle Network Plan*.

TRIP ATTRACTORS

- Springwood CBD
- Slacks Creek Commercial/ Industrial Area
- Springwood Bus Station
- Springwood Primary School
- Logan North Library
- Logan Aquatic Centre
- Various Local Parks

FUNDING

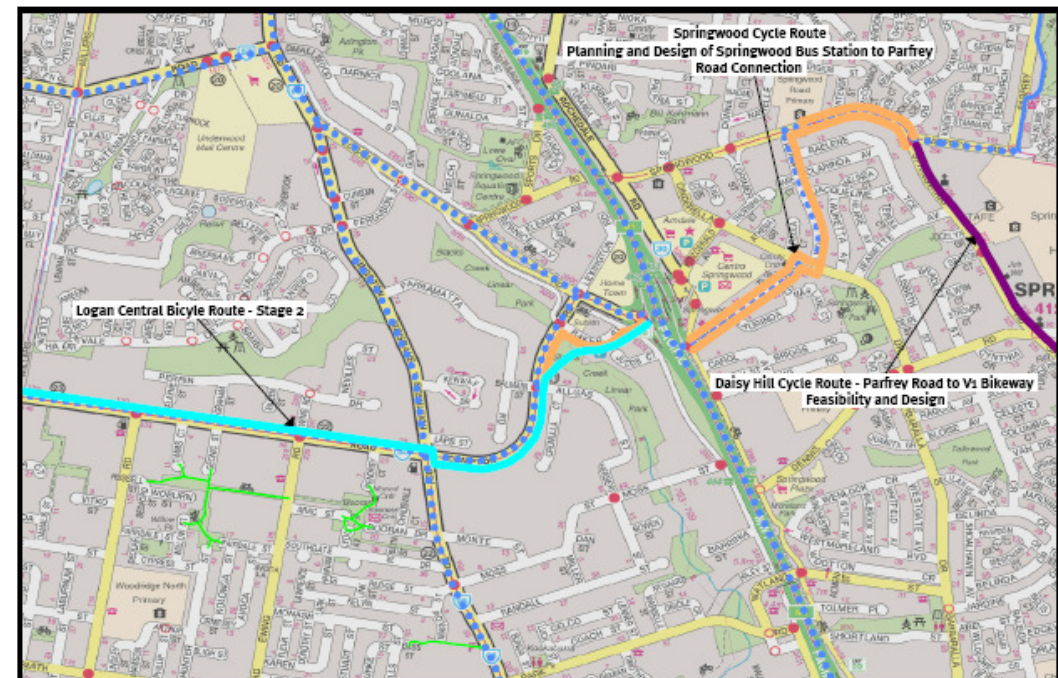
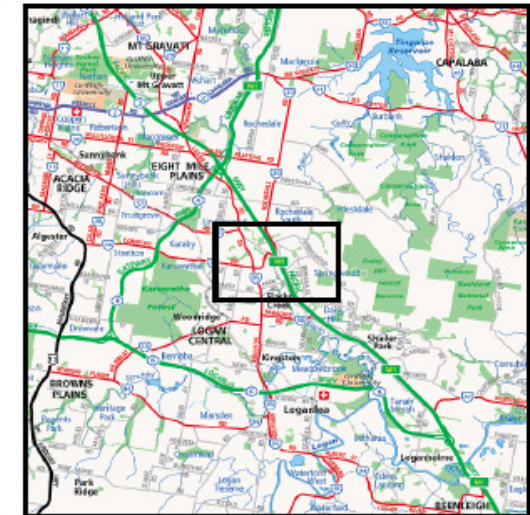
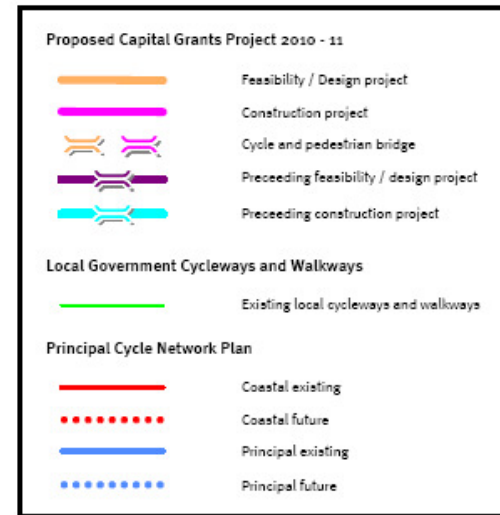
The project estimate is \$66,000.

Logan City Council has committed \$33,000 to this and is requesting:

- \$33,000 as a 2010-11 Capital Grant from the Cycle Network Program.

POLITICAL REPRESENTATION

- Federal – Hon Dr Craig Emerson MP [Rankin]
- State – Mrs Desley Scott MP [Woodridge]
- Local – Cr John Grant [Division 3]



PLANNING OF CUSACK LANE BIKEWAY – JIMBOOMBA TO FLAGSTONE

PROJECT DESCRIPTION

This project involves the investigation and planning of an off-road bikeway along Cusack Lane from Johanna Street to Teviot Road and the possible upgrade of the existing pathway between Johanna Street and Henderson Road.

The project will connect to future planned transport hubs and other cycle infrastructure. The project will also provide connectivity between educational, shopping, employment and recreational facilities across Jimboomba.

Project works include the planning of 7,000 metres of off-road bikeway, 3.0 metres wide and will include signage and lighting.

This project forms part of the cycle network identified in the *South East Queensland Principal Cycle Network Plan*.

TRIP ATTRACTORS

- Jimboomba Town Centre
- Jimboomba Primary School
- Jimboomba Shopping Centre
- Local Sporting and Recreational Facilities

FUNDING

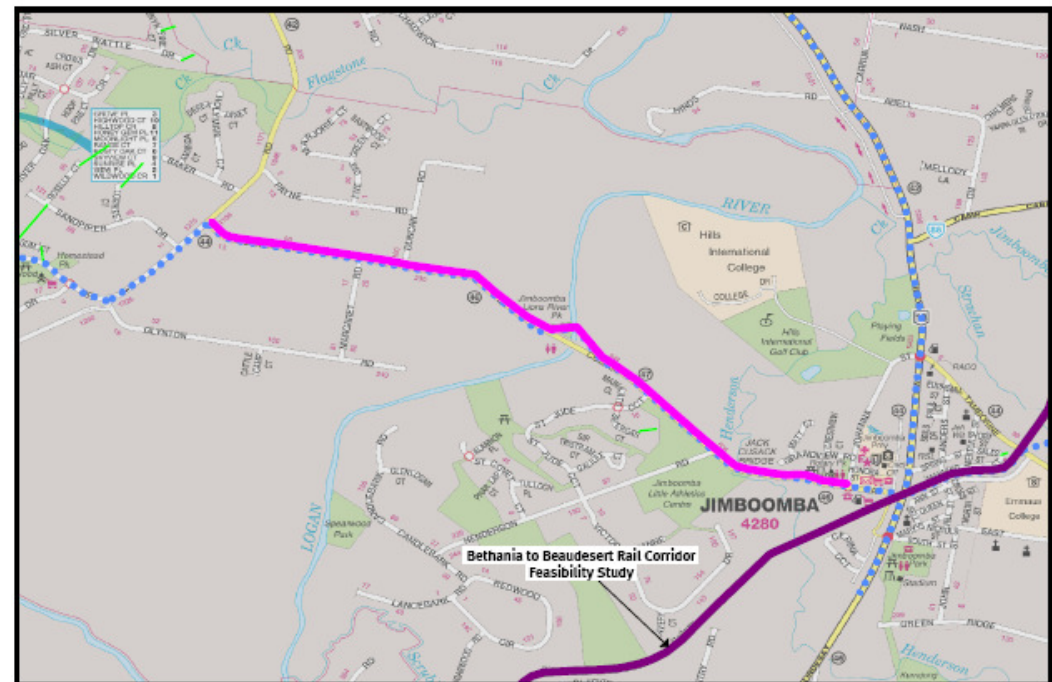
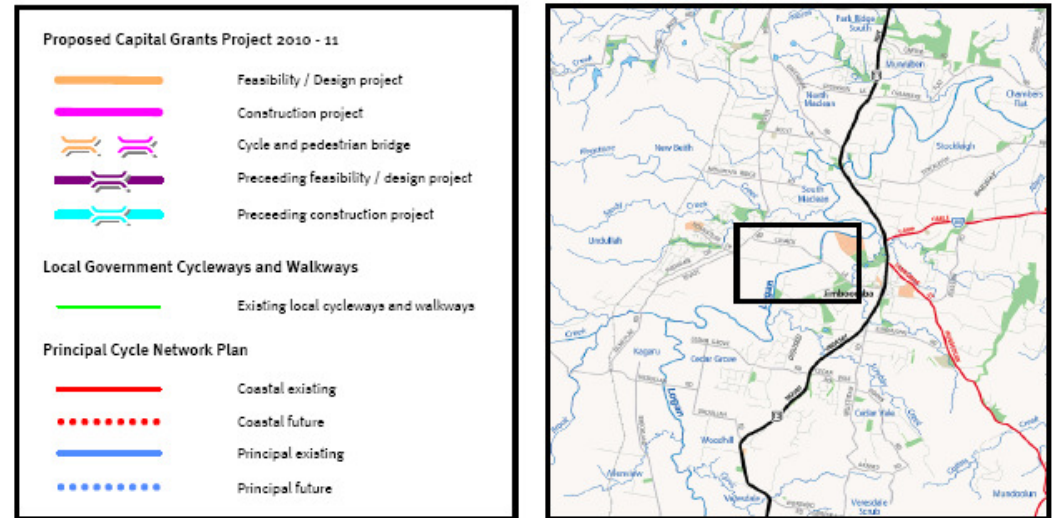
The project estimate is \$44,000.

Logan City Council has committed \$22,000 to this and is requesting:

- \$22,000 as a 2010-11 Capital Grant from the Cycle Network Program.

POLITICAL REPRESENTATION

- Federal – Mr Shayne Neumann MP [Blair] & Mr Brett Raguse MP [Forde]
- State – Hon John Mickel MP [Logan]
- Local – Cr Hijjal Ban [Division 11]



SPRINGWOOD CYCLE ROUTE – PLANNING AND DESIGN OF THE SPRINGWOOD BUS STATION TO PARFREY ROAD CONNECTION

PROJECT DESCRIPTION

This project involves the design of a bikeway mostly on-road bikeway (some off-road at major intersections) connecting Springwood Busway Station on Pacific Highway East Service Road with Parfrey Road on-road bikeway and the remainder of the Springwood Cycle Route through Rochedale South Parkland.

The project design brief will provide connectivity between transport, educational, shopping, employment and recreational facilities in Springwood, Slacks Creek and Rochdale South.

Project works include the planning and design of 1450 metres of 1.5 metre wide on-road cycle lanes and 150 metres of 3.0 metre wide off-road pathway. The project will also include signage and lighting.

This project forms part of the cycle network identified in the *South East Queensland Principal Cycle Network Plan*.

TRIP ATTRACTORS

- Springwood Road Primary School
- Springwood Central Primary School
- Springwood High School
- Metro South Institute of TAFE Springwood Campus
- Springwood Bus Station
- Springwood Activity Centre
- Slacks Creek Industrial Area
- Springwood Bowls Club
- Various Local Parks

FUNDING

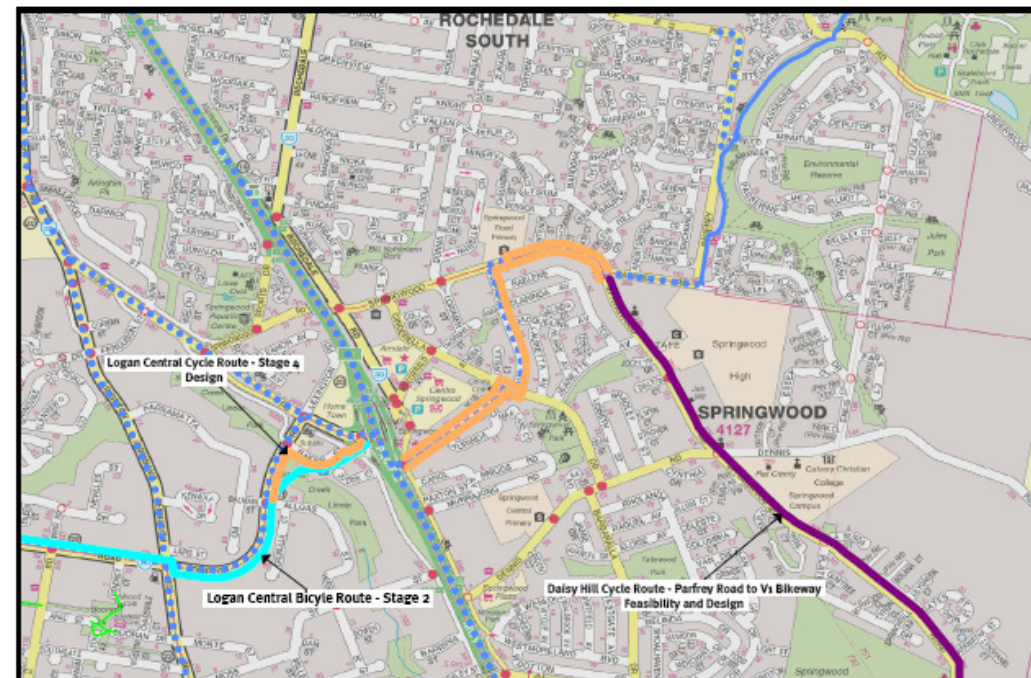
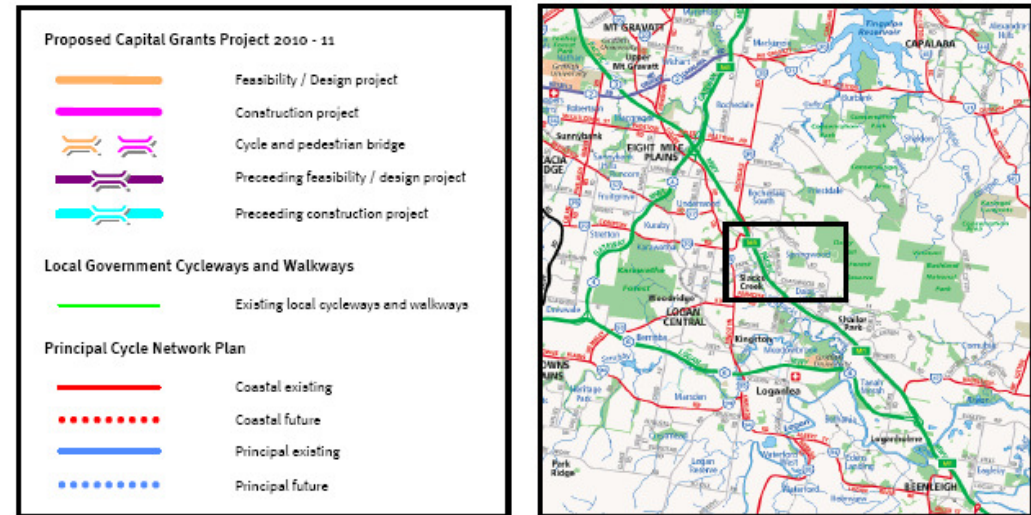
The project estimate is \$44,000.

Logan City Council has committed \$22,000 to this and is requesting:

- \$22,000 as a 2010-11 Capital Grant from the Cycle Network Program.

POLITICAL REPRESENTATION

- Federal – Hon Dr Craig Emerson MP [Rankin]
- State – Ms Barbara Stone MP [Springwood]
- Local – Cr John Grant [Division 3]



WEMBLEY ROAD CYCLE ROUTE – CAMPDEN STREET TO LOGAN MOTORWAY

PROJECT DESCRIPTION

This project involves the construction of an on-road bikeway along both sides of Wembley Road between Campden Street to the Logan Motorway. This link will connect the East West Route (Browns Plains through Logan Central to V1 Motorway).

Project works include 2,000 metres of on-road bikeway (both sides of Wembley Road), 2.0 metres wide and will include an intersection upgrade, signage and lighting.

In 2009/10, the Cycle Network Program provided \$27,500 for the feasibility and design of a bikeway along Wembley Road from Campden Street.

This project forms part of the cycle network identified in the *South East Queensland Principal Cycle Network Plan*.

TRIP ATTRACTORS

- Local Activity Centre
- Wembley Plains Service Centre
- Browns Plains Primary School
- Browns Plains High School
- Browns Plains Rugby Club
- Various Local Parks

FUNDING

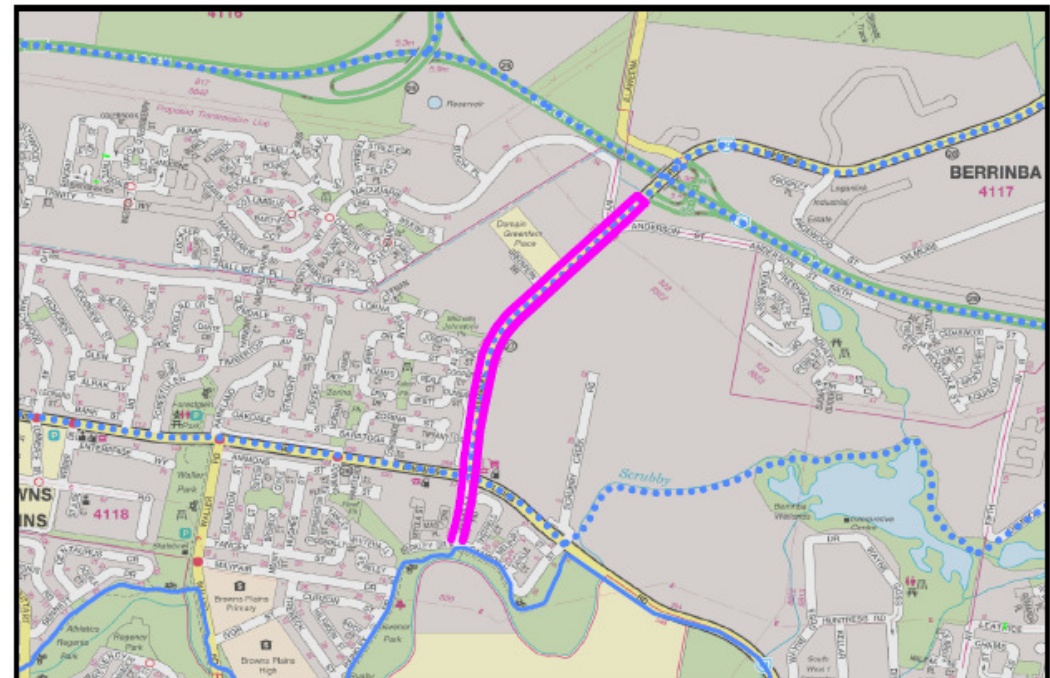
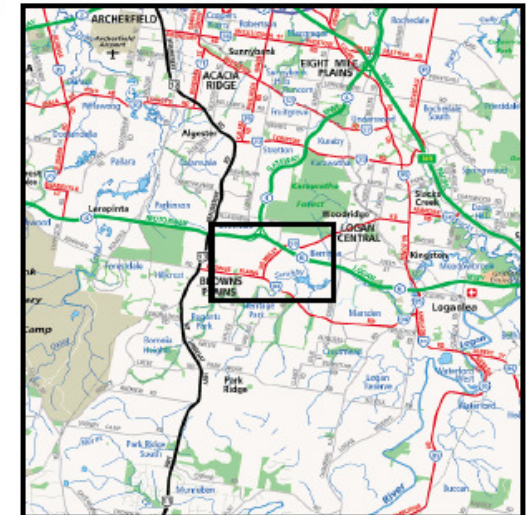
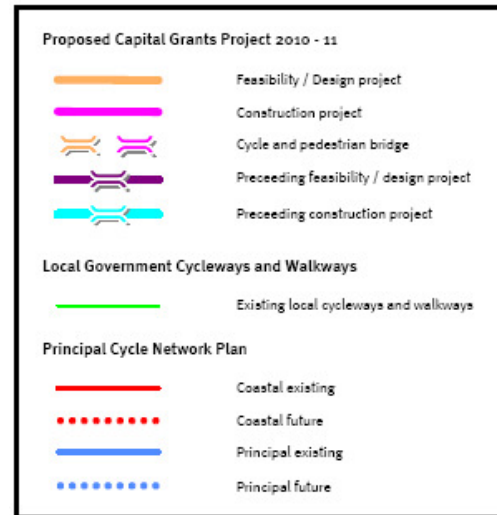
The project estimate is \$660,000.

Logan City Council has committed \$330,000 to this and is requesting:

- \$330,000 as a 2010-11 Capital Grant from the Cycle Network Program.

POLITICAL REPRESENTATION

- Federal – Hon Dr Craig Emerson MP [Rankin]
- State – Hon John Mickel MP [Logan]
- Local – Cr Cherrie Dalley [Division 8]



MORAYFIELD ROAD CYCLEWAY – STAGE 2

PROJECT DESCRIPTION

This project involves the construction of an off-road pathway along Morayfield Road from the intersection of Lindsay Road and Morayfield Road to the end of the existing pathway. This project will provide a safe passage for cyclists and prevent cyclist/ vehicle conflict.

In 2008/09, the Cycle Network Program contributed \$82,500 towards the construction of the 110 metre Morayfield Road Cycleway, to which this project will link.

Project works include 330 metres of 2.5 metre wide off-road pathway, signage and lighting.

This project is part of the cycle network identified in the *South East Queensland Principal Cycle Network Plan*.

TRIP ATTRACTORS

- Morayfield Primary School
- Morayfield High School
- Morayfield Railway Station
- Morayfield Shopping Centre
- Industrial Area
- Morayfield Park Leisure Centre
- Local Parks and Recreational Reserves

FUNDING

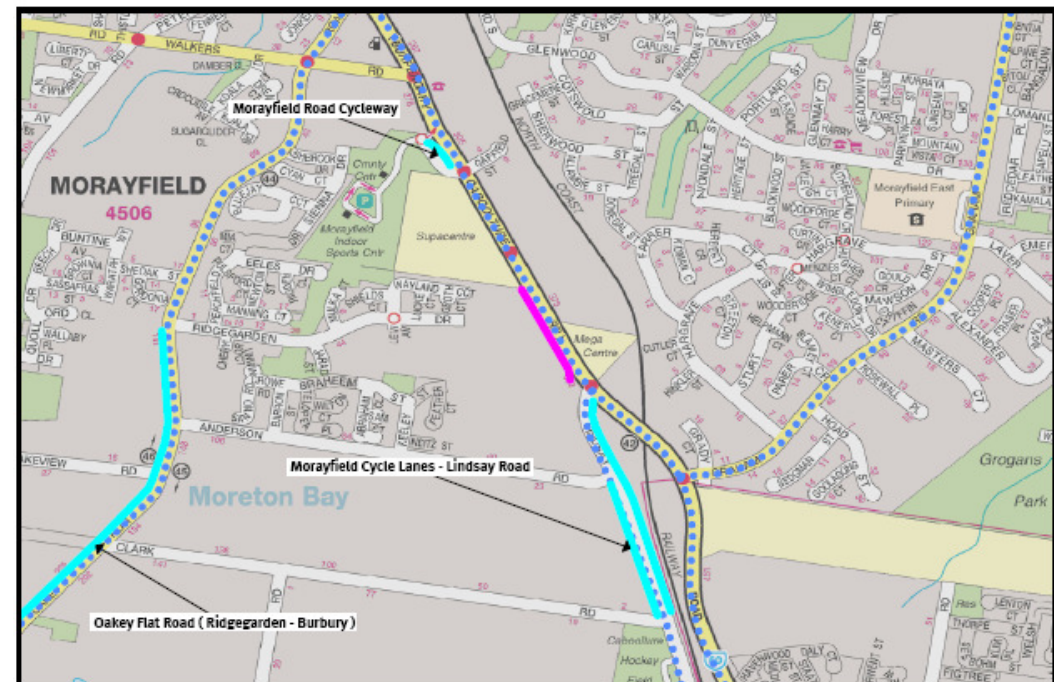
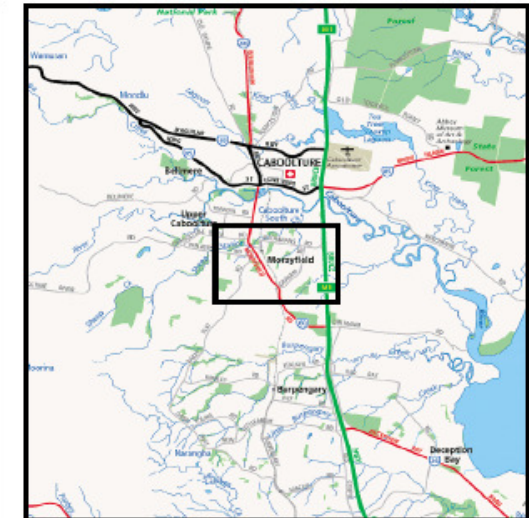
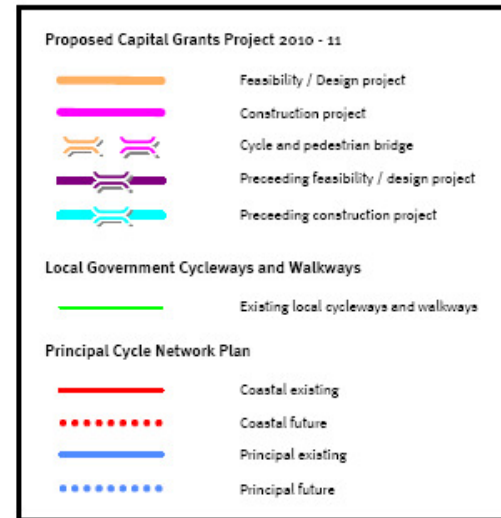
The project estimate is \$82,500.

Moreton Bay Regional Council has committed \$41,250 to this project and is requesting:

- \$41,250 as a 2010-11 Capital Grant from the Cycle Network Program.

POLITICAL REPRESENTATION

- Federal – Mr Jon Sullivan MP [Longman]
- State – Ms Carryn Sullivan MP [Pumicestone]
- Local – Cr Greg Chippendale [Division 3] [Deputy Mayor]



BALLINGER ROAD SHARED PATH AND ON-ROAD CYCLE LANES

PROJECT DESCRIPTION

This project involves the construction of an off-road shared pathway along Ballinger Road from the existing pathway ending at the Ballinger Road and Burnett Street intersection to the existing pathway starting at the intersection of Ballinger Road and Stringybank Road. This project will also involve the construction of on-road cycle lanes along Ballinger Road from Burnett Street to Stringybank Road.

The project will complete an important link between existing and planned future cycle infrastructure, providing safe cycle options for cyclists travelling to local schools, shopping centres and other local facilities.

Project works include 900 metres of 2.5 metre wide off-road shared path and 900 metres of 2.0 metre wide on-road cycle lanes, signage and lighting.

This project is part of the cycle network identified in the *South East Queensland Principal Cycle Network Plan*.

TRIP ATTRACTORS

- Buderim Mountain Primary School
- Matthew Flinders Anglican College
- University of the Sunshine Coast
- Buderim Market Place
- Buderim Village
- Sporting and Recreational Facilities

FUNDING

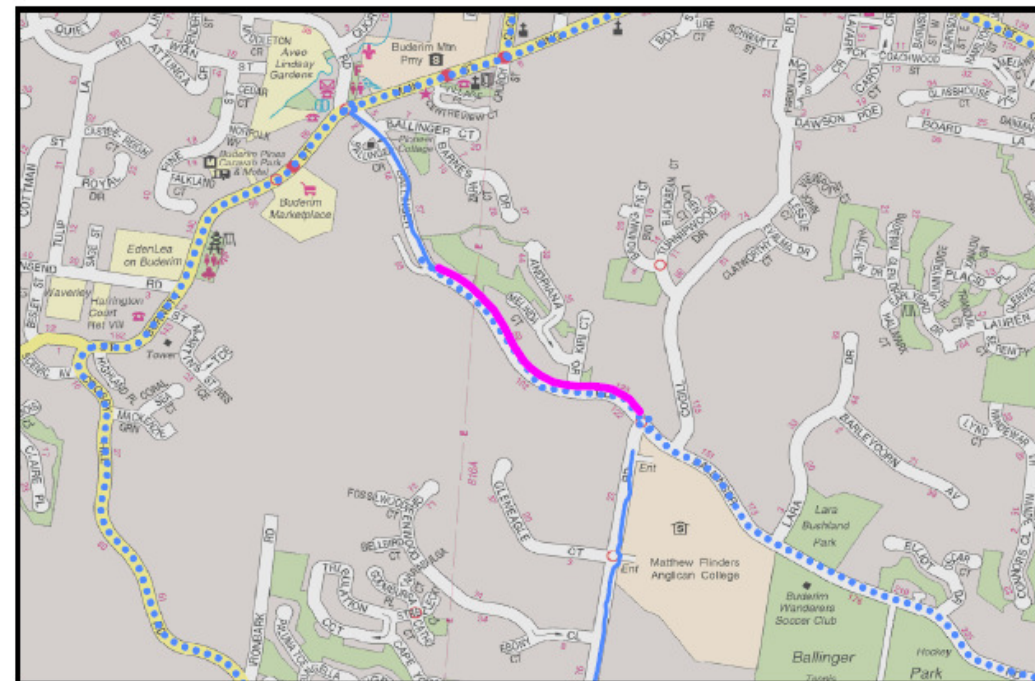
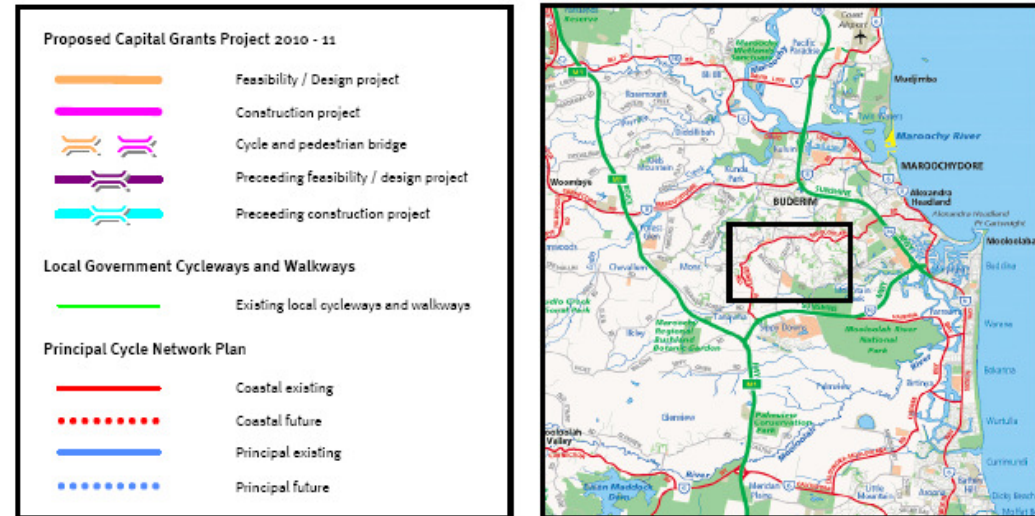
The project estimate is \$600,000.

Sunshine Coast Regional Council has committed \$300,000 to this project and is requesting:

- \$300,000 as a 2010-11 Capital Grant from the Cycle Network Program.

POLITICAL REPRESENTATION

- Federal –Hon Alexander Somlyay MP [Fairfax]
- State – Miss Fiona Simpson MP [Maroochydore]
- Local – Cr Christian Dickson [Division 6]



BECKMANS ROAD CYCLE LANES – STAGE 1

PROJECT DESCRIPTION

This project involves the construction of on road cycle lanes along Beckmans Road between St Andrews Drive and Sea Eagle Drive, Tewantin. The project will be undertaken in conjunction with local councils programmed road resealing works.

The project will provide for cyclists where they would otherwise have no provision. The project will connect to existing cycle lanes along At Andrews Drive and Sea Eagle Drive, as well as existing BAZ treatments along Beckmans Road..

Project works include 2000 metres of 1.5-1.8 metre wide on-road cycle lanes, extension of culverts, road resurfacing, linemarking, signage and lighting.

This project is part of the cycle network identified in the *South East Queensland Principal Cycle Network Plan*.

TRIP ATTRACTORS

- Noosaville Primary School
- St Teresas Catholic College
- Tewantin Forest Reserve
- Cranks Creek Park

FUNDING

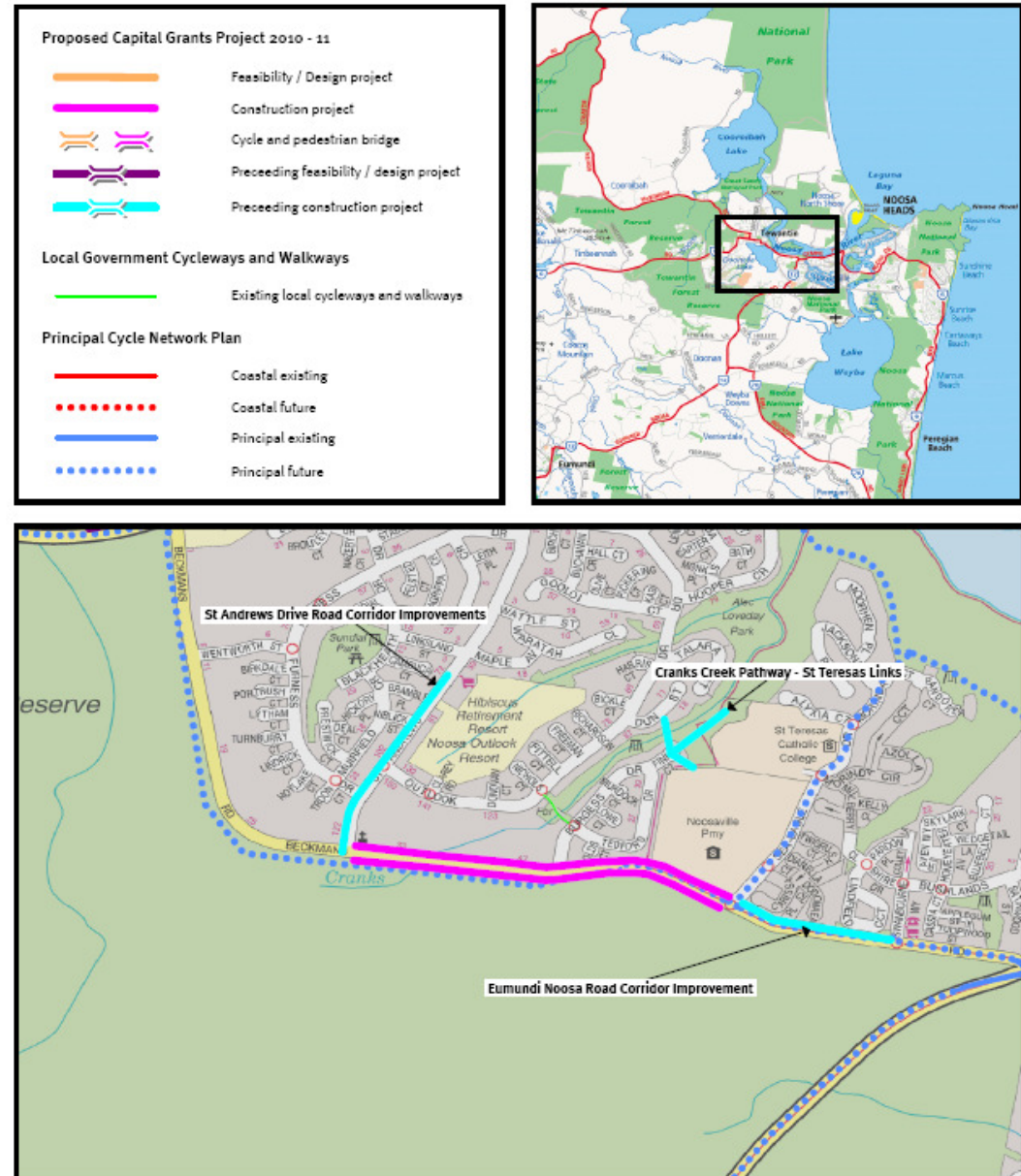
The project estimate is \$693,000.

Sunshine Coast Regional Council has committed \$418,000 to this project and is requesting:

- \$275,000 as a 2010-11 Capital Grant from the Cycle Network Program.

POLITICAL REPRESENTATION

- Federal –Hon Warren Truss MP [Wide Bay]
- State – Mr Glen Elmes MP [Noosa]
- Local – Cr Lew Brennan [Division 12]



KALANA ROAD SHARED PATH

PROJECT DESCRIPTION

This project involves the construction of an off-road pathway starting on Beerburum Street 20 metres east of the Beerburum Street – Kalana Road Roundabout and follows the southern side of Kalana Road on to Parklands Boulevard finishing opposite the Oasis Retirement Resort, including a connection to Ridgheaven Court.

The project will provide a safe cycling facility link for cyclists travelling from the southern side of Beerburum Street and Kalana Road, preventing cyclists from being forced onto the road and reducing the amount of road crossings necessary. The project also links to existing pathways along Parklands Boulevard and Beerburum Street and planned future nearby cycle facilities.

Project works include 450 metres of 2.5-3.0 metre wide off-road pathway, a crossing point refuge, signage and lighting.

This project is part of the cycle network identified in the *South East Queensland Principal Cycle Network Plan*.

TRIP ATTRACTORS

- Talara Primary College
- Meridan State College
- Ridgheaven Park
- Michael Olm Park

FUNDING

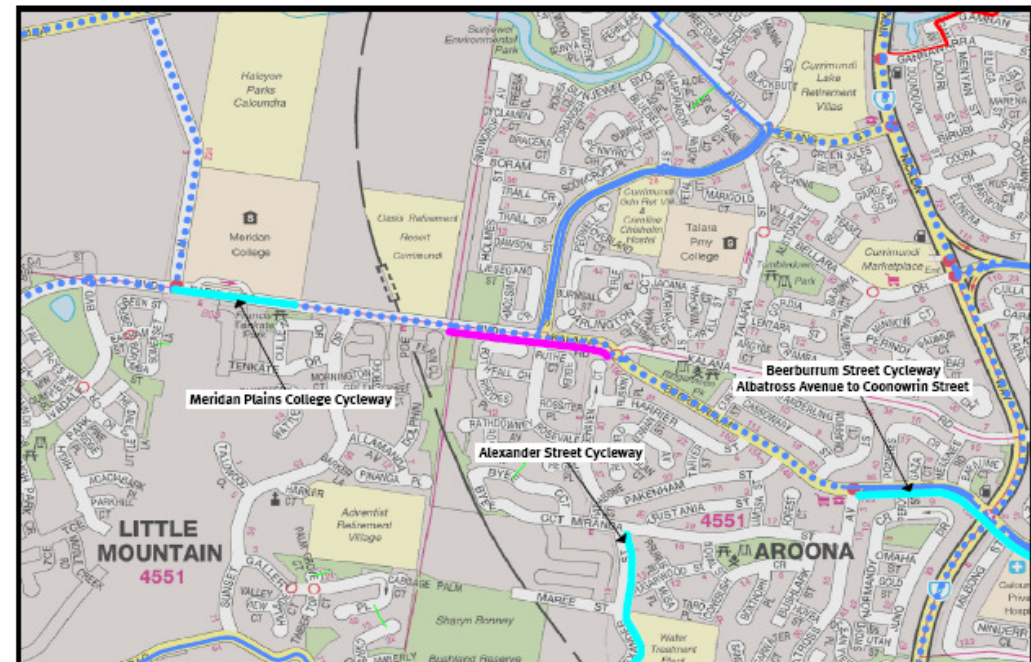
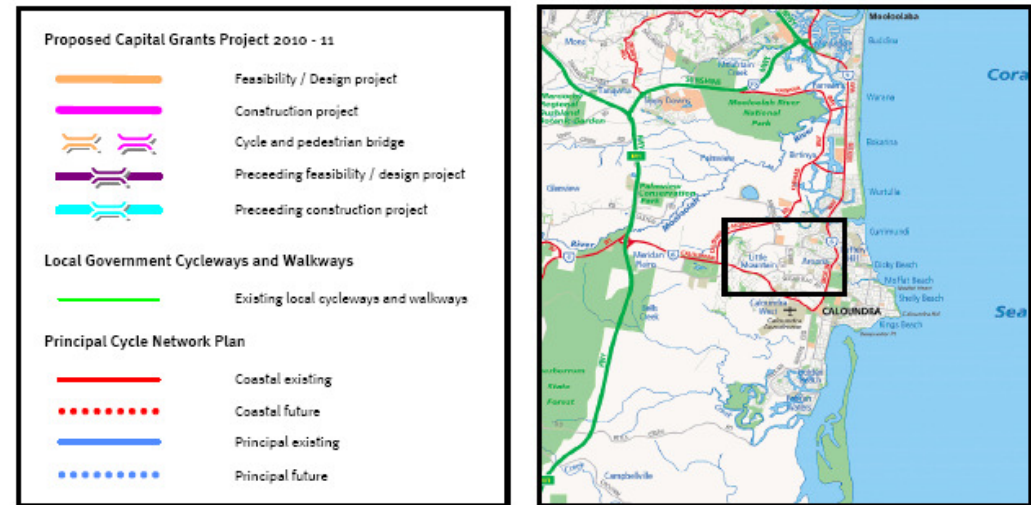
The project estimate is \$220,000.

Sunshine Coast Regional Council has committed \$110,000 to this project and is requesting:

- \$110,000 as a 2010-11 Capital Grant from the Cycle Network Program.

POLITICAL REPRESENTATION

- Federal –Hon Peter Slipper MP [Fisher]
- State – Mr Mark McArdle MP [Caloundra]
- Local – Cr Tim Dwyer [Division 2]



MAROOCHY BOULEVARD CYCLE LANES

PROJECT DESCRIPTION

This project involves the construction of on-road independent cycle lanes along Maroochy Boulevard between School Road and Plaza Parade and shared bike/ bus lanes along Maroochy Boulevard from Plaza Parade to Wisers Road.

The project will provide a direct link for cyclists travelling to the Maroochydore centre and related facilities.

Project works include 1,800 metres of 1.5-1.8 metre on-road cycle lanes, signage and lighting.

This project links to a part of the cycle network identified in the *South East Queensland Principal Cycle Network Plan*.

TRIP ATTRACTORS

- Maroochydore Primary School
- Maroochydore High School
- Immanuel Lutheran College
- Sunshine Plaza & Homemaker Centre
- Wisers Road Industrial & Commercial Precinct
- Horton Park Golf Club
- Sporting & Recreational Facilities

FUNDING

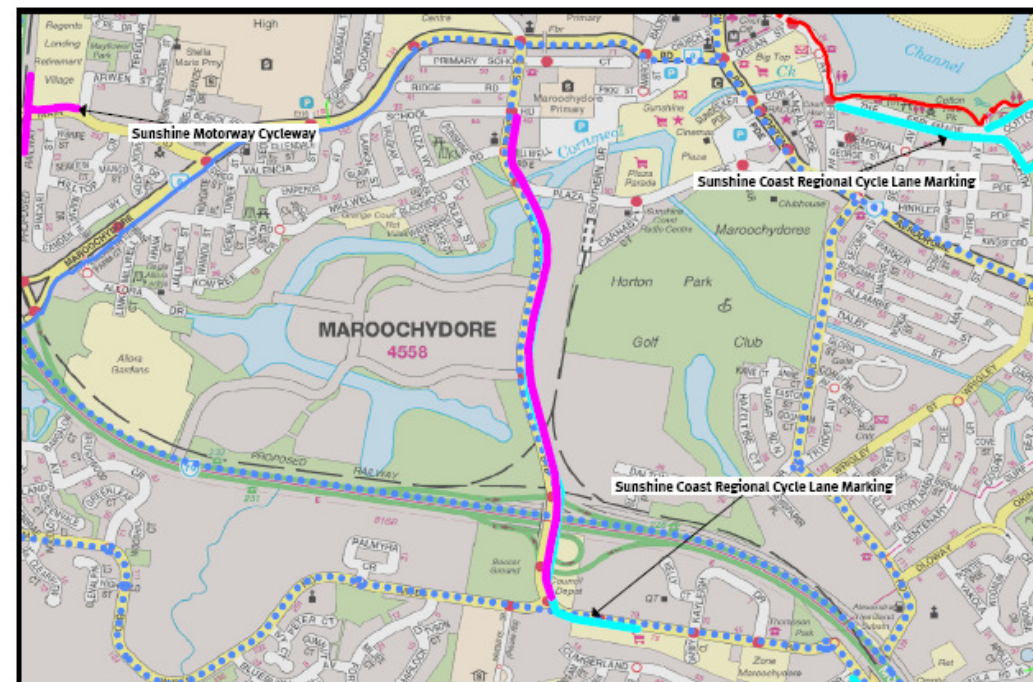
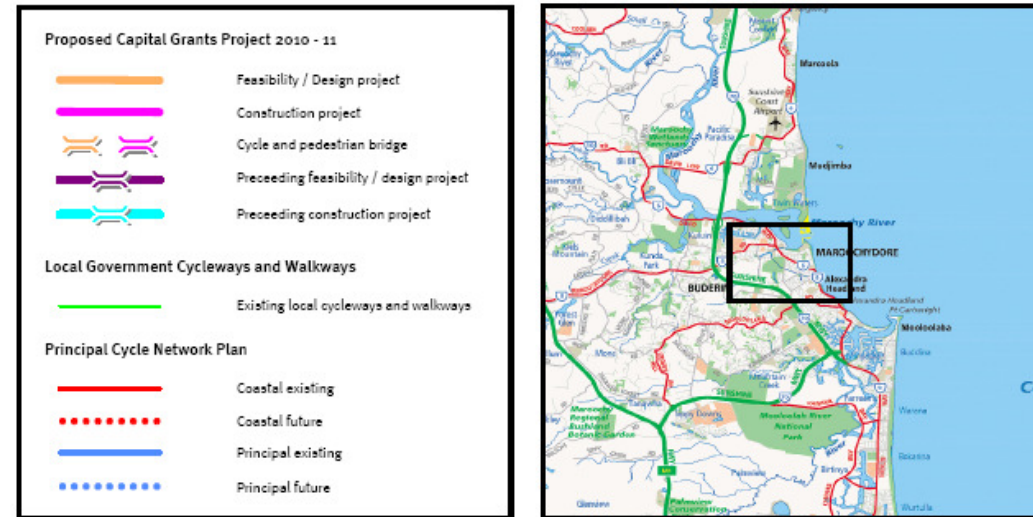
The project estimate is \$132,000.

Sunshine Coast Regional Council has committed \$66,000 to this project and is requesting:

- \$66,000 as a 2010-11 Capital Grant from the Cycle Network Program.

POLITICAL REPRESENTATION

- Federal – Hon Alex Somlyay MP [Fairfax]
- State – Miss Fiona Simpson MP [Maroochydore]
- Local – Cr Debbie Blumel [Division 8] & Cr Ted Hungerford [Division 7]



NOOSA DRIVE SHARED PATH – WESTERN SECTION STAGE 1

PROJECT DESCRIPTION

This project involves the construction of an off-road shared pathway along the western side of Noosa Drive between Noosa Sanctuary (Sanctuary Drive) and Coral Tree Avenue.

The project will link to an existing pathway along the south western side of Noosa Drive provided by Noosa Sanctuary developers. The pathway will ensure that the existing pathway is viable by connecting southern residents with the Noosa Junction Business Precinct.

Project works include 450 metres of 2.5-3.0 metre wide off-road shared pathway, signage and lighting.

This project is part of the cycle network identified in the *South East Queensland Principal Cycle Network Plan*.

TRIP ATTRACTORS

- University of the Sunshine Coast
- Noosa Junction Business Precinct
- Global Village English College
- Noosa Heads Bowls Club
- Pinnaroo Park

FUNDING

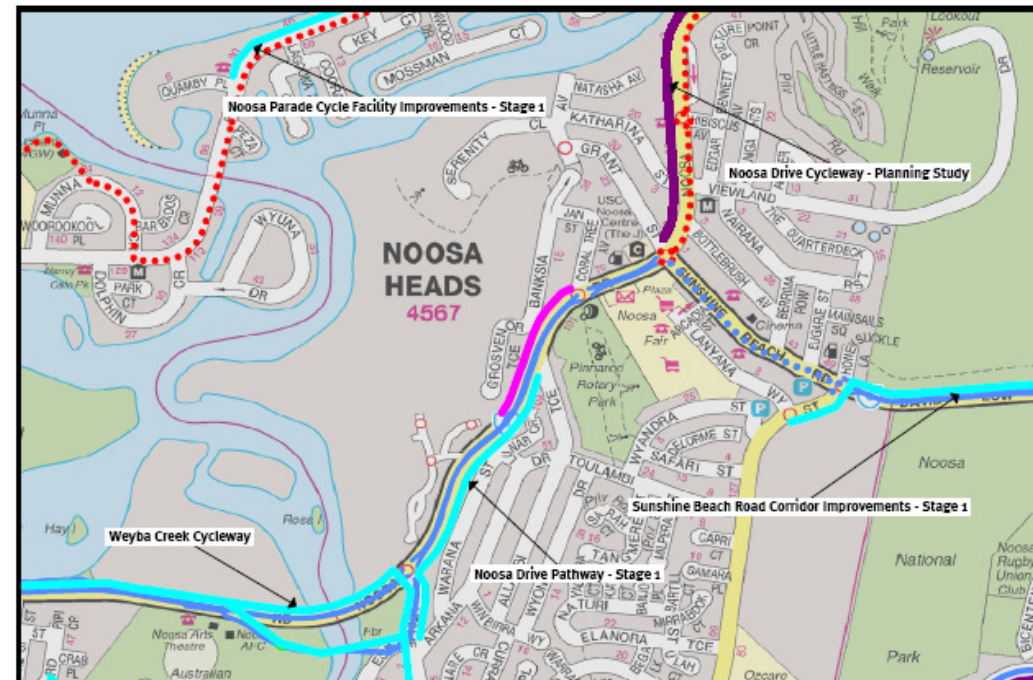
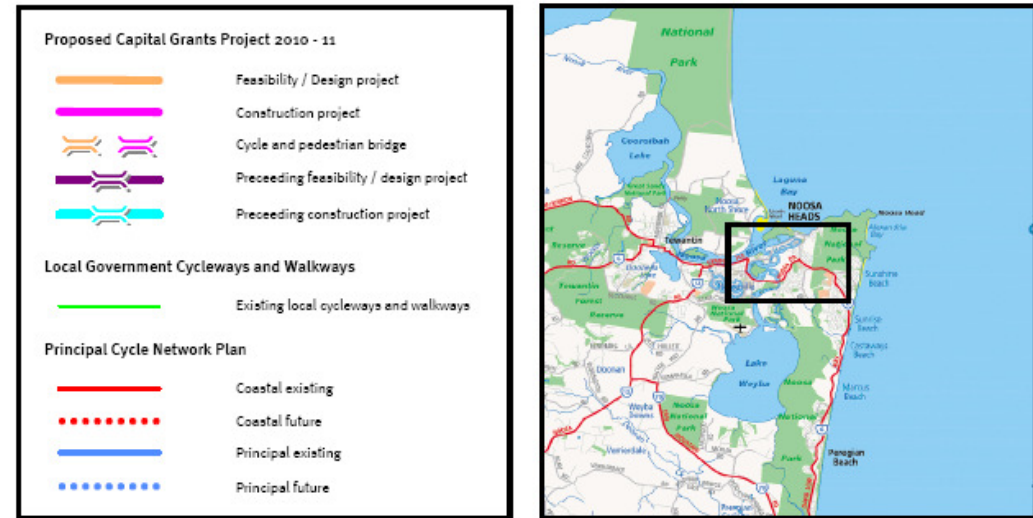
The project estimate is \$330,000.

Sunshine Coast Regional Council has committed \$165,000 to this project and is requesting:

- \$165,000 as a 2010-11 Capital Grant from the Cycle Network Program.

POLITICAL REPRESENTATION

- Federal –Hon Warren Truss MP [Wide Bay]
- State – Mr Glen Elmes MP [Noosa]
- Local – Cr Russell Green [Division 11]



PARK ROAD CYCLEWAY – STAGE 2

PROJECT DESCRIPTION

This project involves the construction of a cyclist and pedestrian boardwalk parallel to Park Road from 'First Point' to the Alderley Terrace and Park Road intersection. The project connects to the boardwalk from Hastings Street to Little Cove Road constructed last year as stage 1 of the Park Road Cycleway.

The project is a critical link by bicycle, in an overall strategy to make it easier for locals and tourists to travel to shopping, employment and recreational destinations around Noosa.

Project works include 250 metres of 3.0-4.0 metre wide timber/steel boardwalk, signage and lighting.

In 2008/09, the Cycle Network Program contributed \$100,000 for detailed design plans to upgrade the Park Road Boardwalk from Hastings Street to Noosa National Park.

In 2009/10, the Cycle Network Program contributed \$900,000 for the construction of Park road Cycleway – Stage 1.

This project links to a part of the cycle network identified in the South East Queensland Principal Cycle Network Plan.

TRIP ATTRACTORS

- Hastings Street Shopping District
- Noosa Parade Transit Interchange
- Noosa fair Shopping Centre
- Gympie Terrace Shopping Centre
- Noosa Junction Business Precinct
- Noosa Harbour
- Noosa Heads Headland National Park
- Tewantin Business Precinct

FUNDING

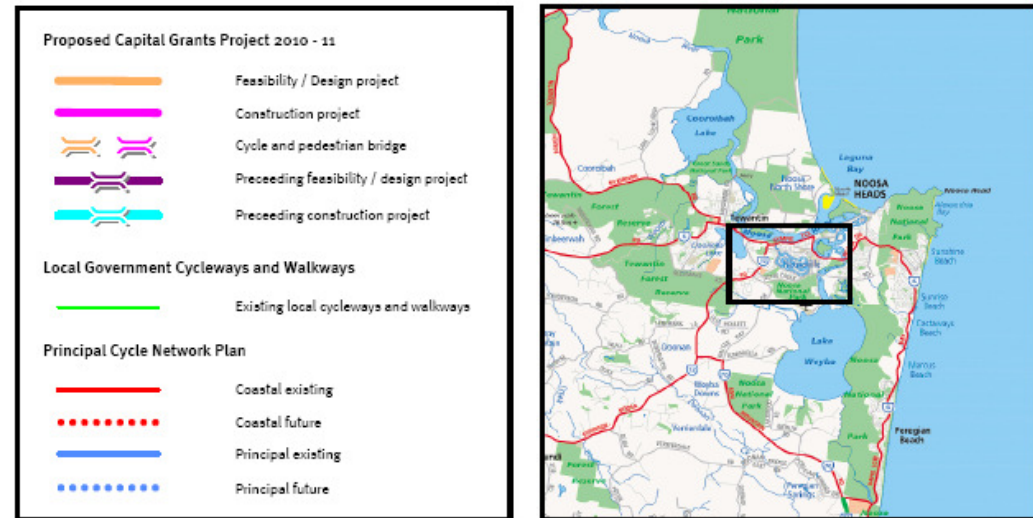
The project estimate is \$715,000.

Sunshine Coast Regional Council has committed \$357,500 to this project and is requesting:

- \$357,500 as a 2010-11 Capital Grant from the Cycle Network Program.

POLITICAL REPRESENTATION

- Federal –Hon Warren Truss MP [Wide Bay]
- State – Mr Glen Elmes MP [Noosa]
- Local – Cr Russell Green [Division 11]



PERWILLOWEN ROAD CYCLE LANES

PROJECT DESCRIPTION

This project involves the construction of on-road cycle lanes on both sides of Perwillowen Road between Arundell Avenue and Windsor Road. The project will connect to many existing off-road pathways.

The project will improve the safety of an important link of key roadway, connecting to a large number of attractors including TAFE, schools, parks, community centres, employment nodes and residential areas.

Project works include 220 metres of 1.5 metre wide on-road cycle lane, green treatments at entries and exits of roundabouts signage and lighting.

This project is part of the cycle network identified in the *South East Queensland Principal Cycle Network Plan*.

TRIP ATTRACTORS

- Nambour Town Centre
- Nambour Train Station
- Nambour Bus Interchange
- Burnside Primary School
- Burnside High School
- Sunshine Coast Institute of TAFE
- Nambour Special School
- Sunshine Coast PCYC
- Sporting and Recreational Facilities

FUNDING

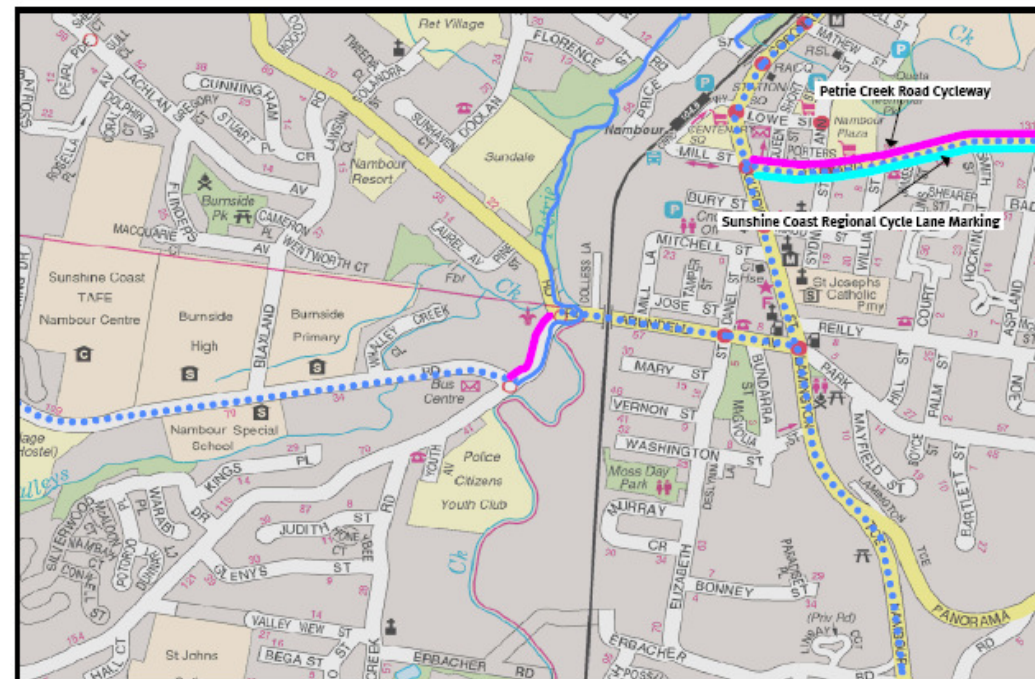
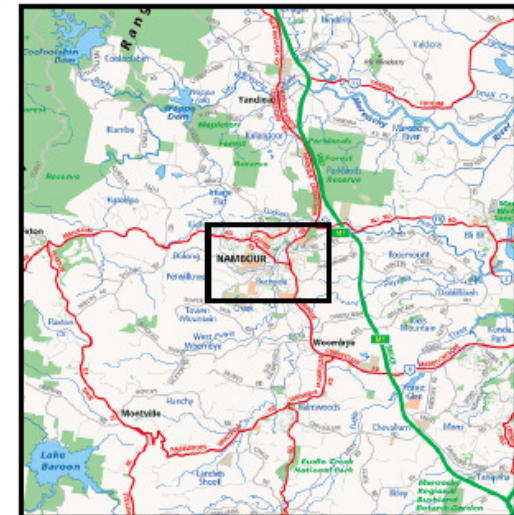
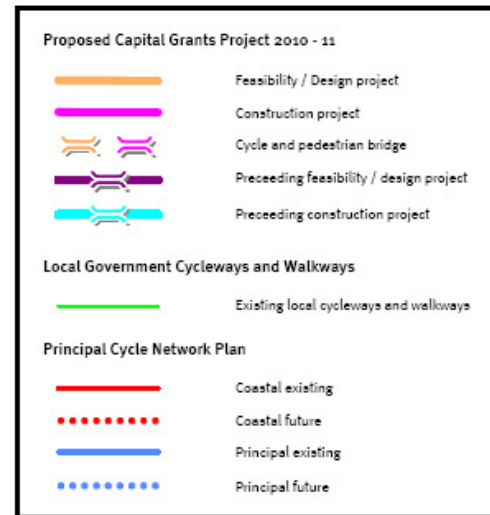
The project estimate is \$66,000.

Sunshine Coast Regional Council has committed \$33,000 to this project and is requesting:

- \$33,000 as a 2010-11 Capital Grant from the Cycle Network Program.

POLITICAL REPRESENTATION

- Federal –Hon Peter Slipper MP [Fisher]
- State – Mr Jarrod Bleijie MP [Kawana]
- Local – Cr Paul Tatton [Division 10]



PETRIE CREEK ROAD – STAGE 1

PROJECT DESCRIPTION

This project involves the construction of on-road cycle lanes along Petrie Creek Road from David Low Way to the corner of Queen Street and Howard Street in Nambour. This project is the first stage that will ultimately deliver 9000 metres of on and off road cycle facilities along Petrie Creek Road.

The project will complete a gap in the cycle network between Nambour and Maroochydore, connecting Bli Bli and Rosemount to Nambour town centre.

Stage 1 project works include 2000 metres of 1.8 metre wide on-road cycle lane, signage and lighting.

In 2009/10, the Cycle Network Program contributed \$55,000 for the design and scope of works for a safe east-west link from Maroochydore to Bli Bli to Nambour.

This project is part of the cycle network identified in the *South East Queensland Principal Cycle Network Plan*.

TRIP ATTRACTORS

- Nambour Town Centre
- Nambour Train Station
- Nambour Bus Interchange
- Nambour Primary School
- Nambour High School
- St Josephs Primary School
- Sporting Facilities
- Recreational Reserves

FUNDING

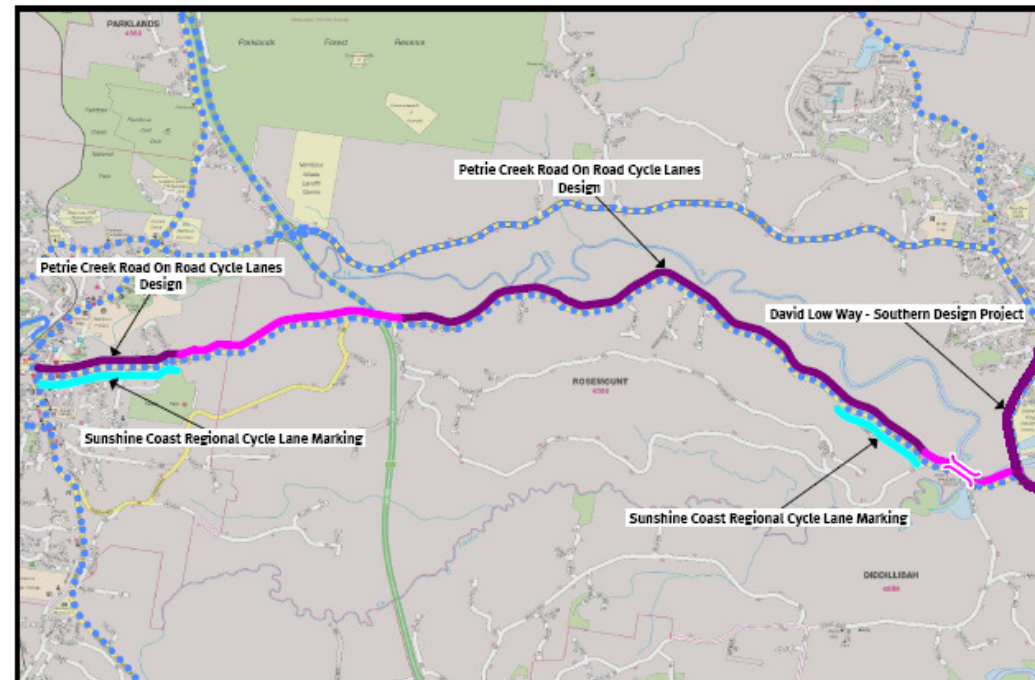
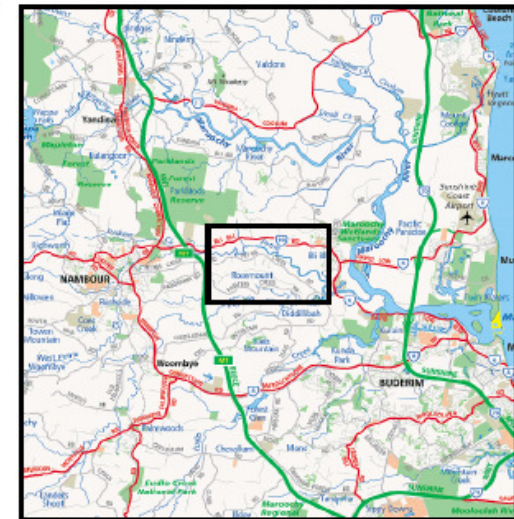
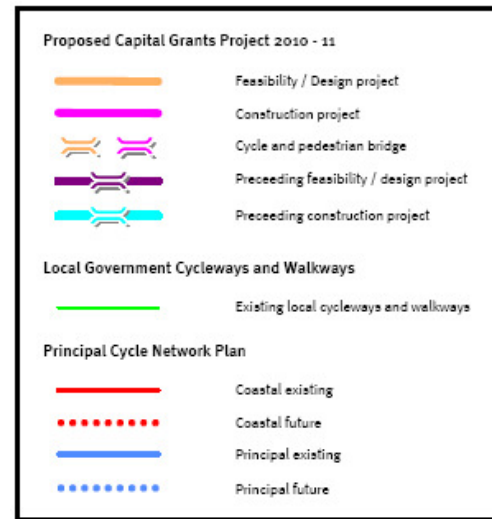
The project estimate is \$550,000.

Sunshine Coast Regional Council has committed \$275,000 to this project and is requesting:

- \$275,000 as a 2010-11 Capital Grant from the Cycle Network Program.

POLITICAL REPRESENTATION

- Federal – Hon Alex Somlyay MP [Fairfax]
- State – Mr Peter Wellington MP [Nicklin]
- Local – Cr Ted Hungerford [Division 7]



SUNSHINE COAST MOTORWAY SHARED PATH

PROJECT DESCRIPTION

This project involves the construction of an off-road pathway starting 100 metres south of Main Road on Sunshine Coast Motorway Pathway and continues 200 metres north of Main Road, then extending 150 metres east to connect to Arwen Street.

The project will connect to the existing high quality off road pathway on the Sunshine Coast Motorway to key attractors such as schools, residential areas and employment nodes.

Project works include 450 metres of 2.5-3.0 metre wide off-road pathway, signage and lighting.

This project is part of the cycle network identified in the *South East Queensland Principal Cycle Network Plan*.

TRIP ATTRACTORS

- Stella Maris Catholic Primary School
- Maroochydore High School
- Regents Landing Retirement Village
- Millwell Road Community Centre
- Mayflower Park
- Sporting and Recreational Facilities

FUNDING

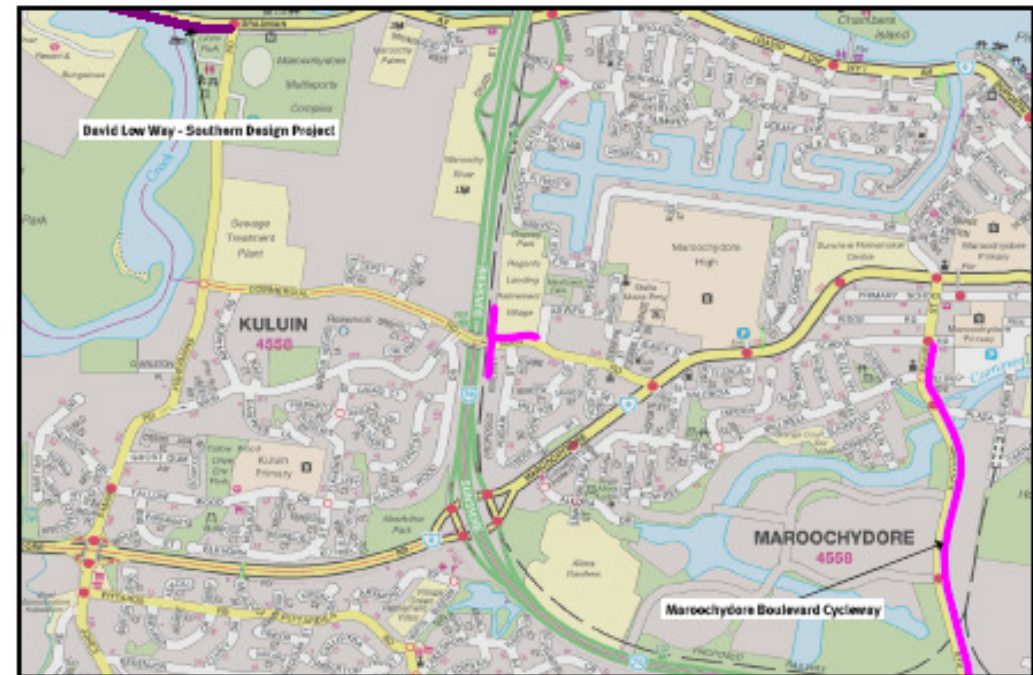
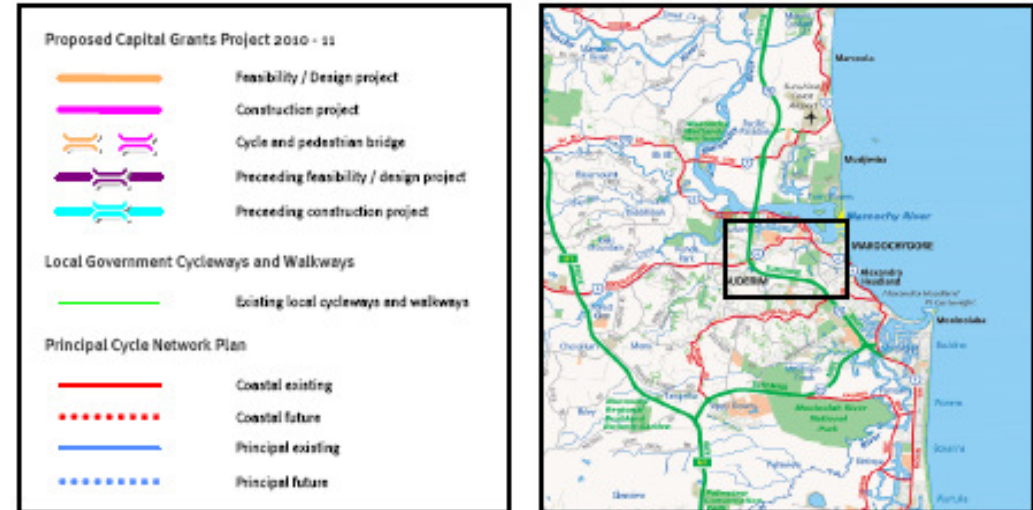
The project estimate is \$165,000.

Sunshine Coast Regional Council has committed \$82,500 to this project and is requesting:

- \$82,500 as a 2010-11 Capital Grant from the Cycle Network Program.

POLITICAL REPRESENTATION

- Federal – Hon Alex Somlyay MP [Fairfax]
- State – Miss Fiona Simpson MP [Maroochydore]
- Local – Cr Debbie Blumel [Division 8]



TANAWAH TOURIST DRIVE

PROJECT DESCRIPTION

This project involves the construction of an off-road pathway along the southern side of Tanawah Tourist Drive starting opposite Crosby Hill Road and ending after the roundabout connecting to Sippy Downs Drive.

The project will provide an important link for cyclists, safely connecting cyclists and pedestrians to schools and universities.

Project works include 500 metres of 2.5 metre wide off-road pathway, signage and lighting.

This project is part of the cycle network identified in the *South East Queensland Principal Cycle Network Plan*.

TRIP ATTRACTORS

- Siena Catholic College
- Chancellor Primary School
- University of the Sunshine Coast
- Chancellor Park Market Place
- Chancellor Park Golf Driving Range
- Local Parks

FUNDING

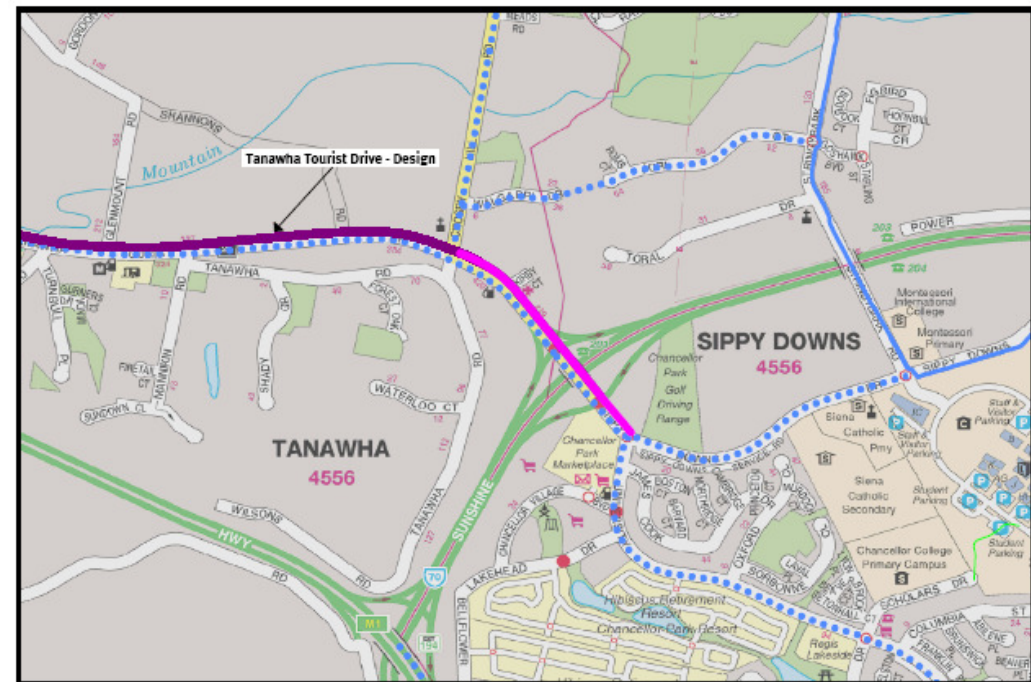
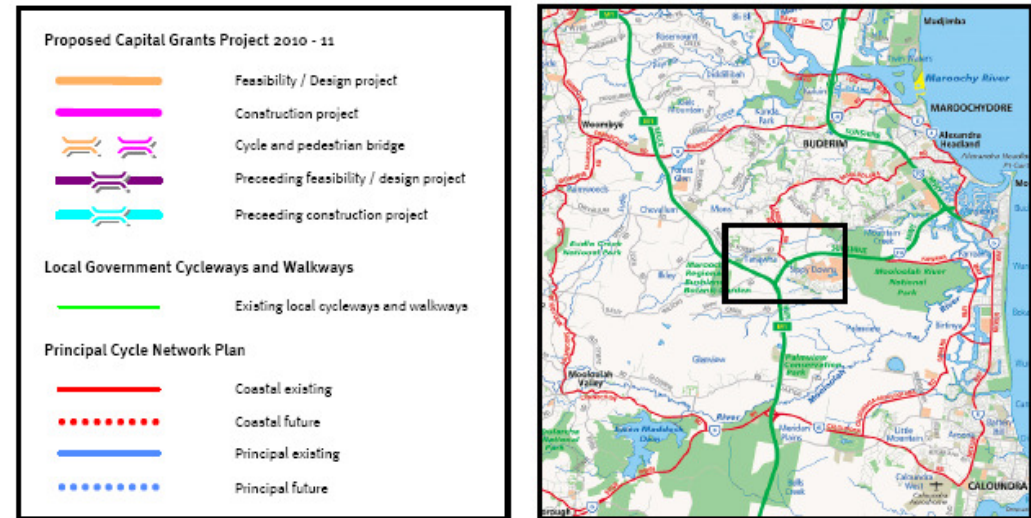
The project estimate is \$192,500.

Sunshine Coast Regional Council has committed \$96,250 to this project and is requesting:

- \$96,250 as a 2010-11 Capital Grant from the Cycle Network Program.

POLITICAL REPRESENTATION

- Federal –Hon Peter Slipper MP [Fisher]
- State – Mr Jarrod Bleijie MP [Kawana]
- Local – Cr Christian Dickson [Division 6]



EAST CREEK CROSSING UPGRADES

PROJECT DESCRIPTION

This project involves the construction of intersection crossing upgrades along the existing East Creek Cycleway at the Margaret Street, Perth Street and Long Street intersections.

The project will provide a safe passage for cyclists and prevent cyclist/ vehicle conflict.

Project works include terminal treatments at Margaret Street intersection and a variety of safety improvements along the cycleway including lighting and signage.

This project is part of the cycle network identified in the *South East Queensland Principal Cycle Network Plan*.

TRIP ATTRACTORS

- Toowoomba Central Business District
- Centenary Heights High School
- St Josephs College
- Gabbinbar Primary School
- Rangeville Primary School

FUNDING

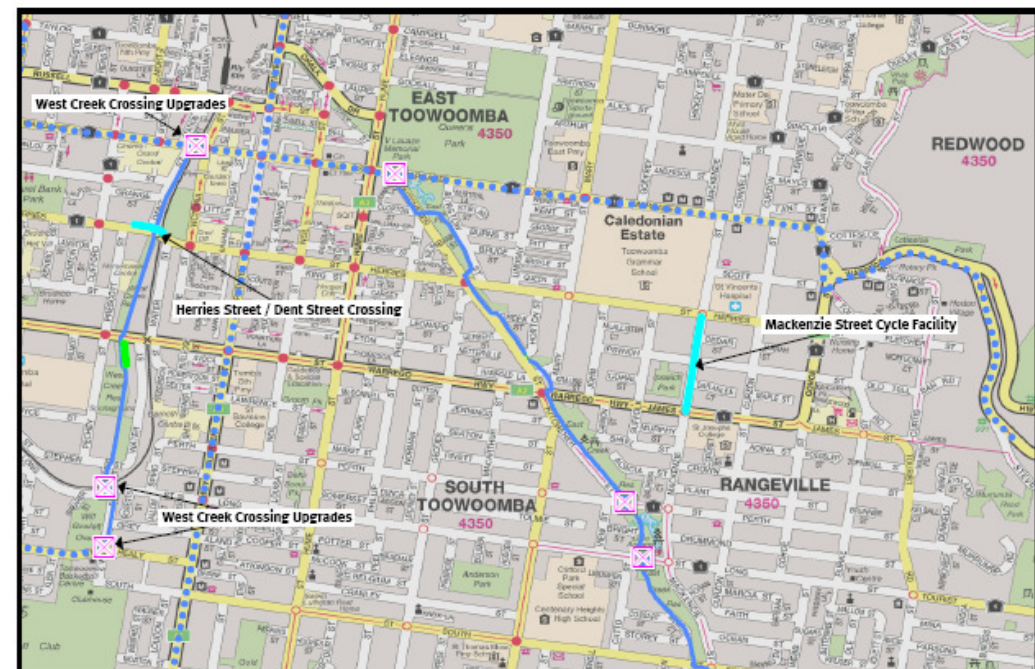
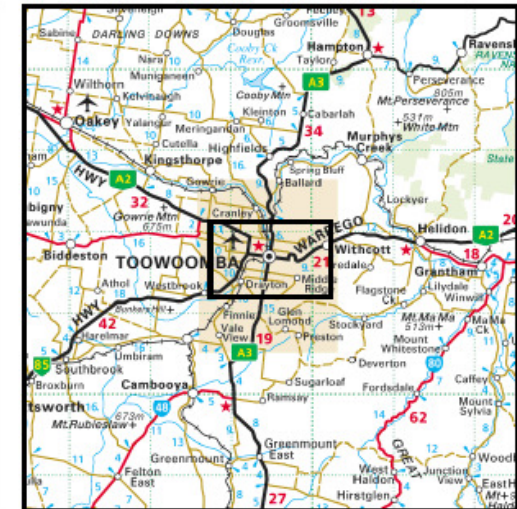
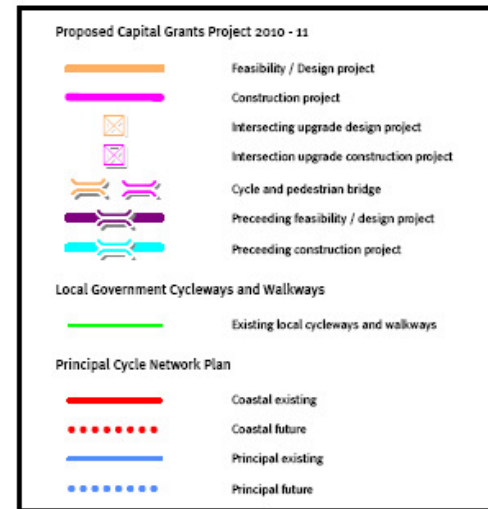
The project estimate is \$50,000.

Toowoomba Regional Council has committed \$25,000 to this project and is requesting:

- \$25,000 as a 2010-11 Capital Grant from the Cycle Network Program.

POLITICAL REPRESENTATION

- Federal –Hon Ian Macfarlane MP [Groom]
- State – Mr Kerry Shine MP [Toowoomba North] & Mr Mike Horan MP [Toowoomba South]
- Local – Cr Peter Taylor [Mayor]



SOUTHWEST CORRIDOR DESIGN

PROJECT DESCRIPTION

This project involves the construction of on-road cycle lanes, starting at the corner of South Street and North Street along Drayton Road, Luck Street, Brisbane Street and Rudd Street, Toowoomba.

The project will provide an important link for cyclists travelling to schools, jobs, sporting and recreational facilities.

Project design will include 6900 metres of 1.5 metre wide on-road cycle lanes, signage and lighting.

This project is part of the cycle network identified in the *South East Queensland Principal Cycle Network Plan*.

TRIP ATTRACTORS

- Toowoomba Central Business District
- Local Primary and High Schools
- Toowoomba Hospital
- Local Shopping Centres
- Industrial Area
- Local Sporting and Recreational Facilities

FUNDING

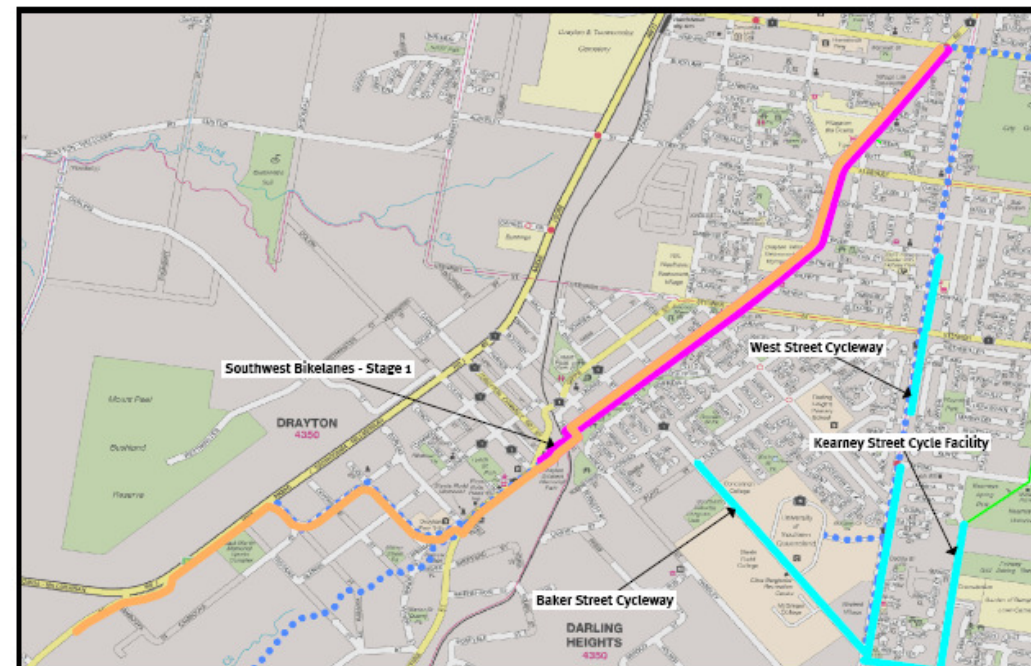
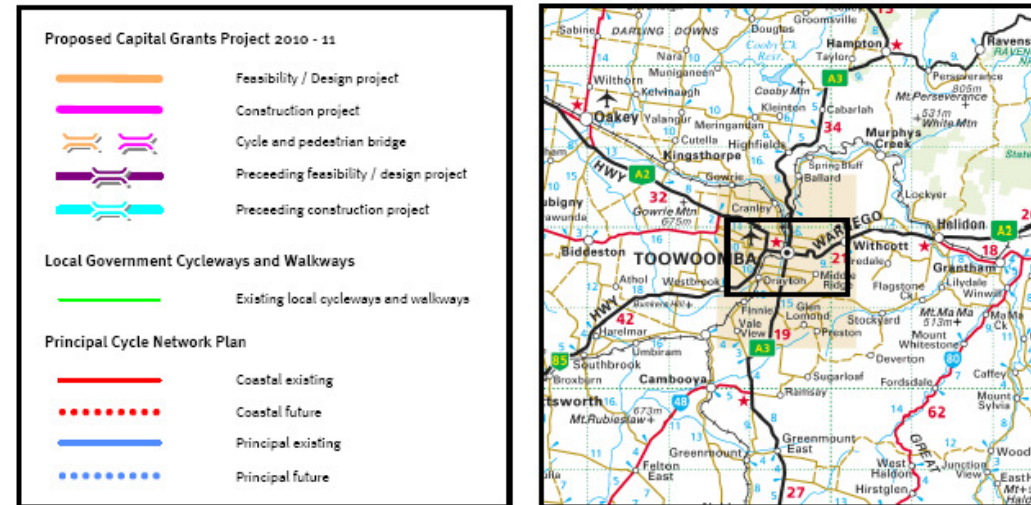
The project estimate is \$80,000.

Toowoomba Regional Council has committed \$40,000 to this project and is requesting:

- \$40,000 as a 2010-11 Capital Grant from the Cycle Network Program.

POLITICAL REPRESENTATION

- Federal – Hon Ian Macfarlane MP [Groom]
- State – Mr Kerry Shine MP [Toowoomba North] & Mr Mike Horan MP [Toowoomba]
- Local – Cr Peter Taylor [Mayor]



SOUTHWEST CORRIDOR – DRAYTON ROAD AND LUCK STREET BIKE LANES

PROJECT DESCRIPTION

This project involves the construction of on-road cycle lanes along both sides of Drayton Road from the South Street and West Street intersection to Stenner Street, and then continues along Luck Street finishing at the intersection of Luck Street Brisbane Street.

The project is Stage 1 of the Southwest Corridor which has been submitted for 2010/11 Capital Grants funding. This stage will provide an important link for cyclists travelling to schools, jobs, sporting and recreational facilities.

Project works include 3600 metres of 1.5 metre wide on-road cycle lanes, signage and lighting.

This project is part of the cycle network identified in the *South East Queensland Principal Cycle Network Plan*.

TRIP ATTRACTORS

- Toowoomba Central Business District
- Local Primary and High Schools
- Toowoomba Hospital
- Local Shopping Centres
- Industrial Area
- Local Sporting and Recreational Facilities

FUNDING

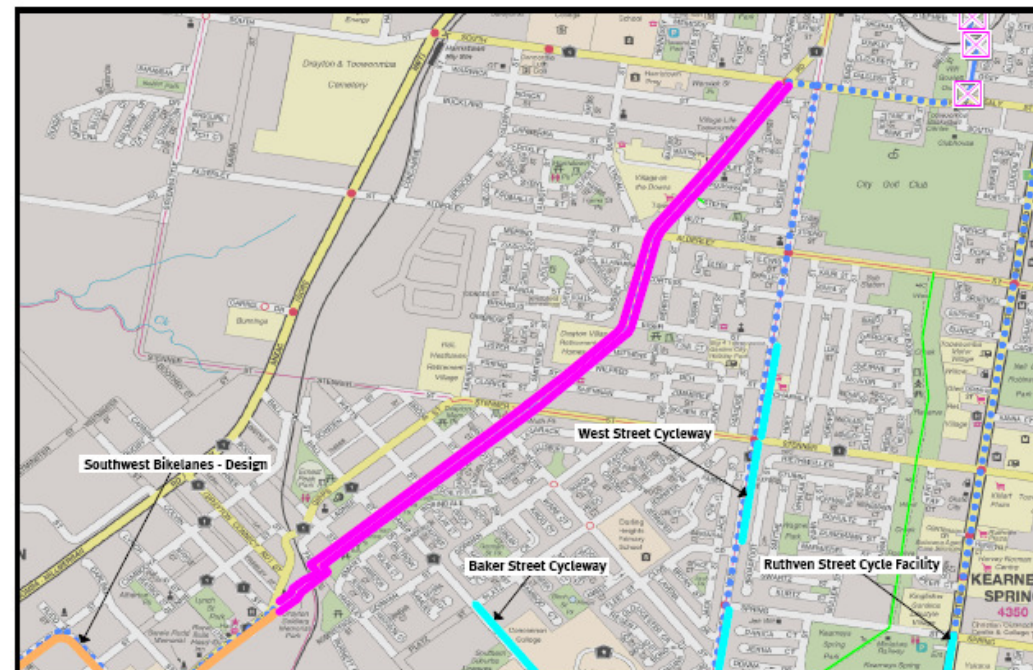
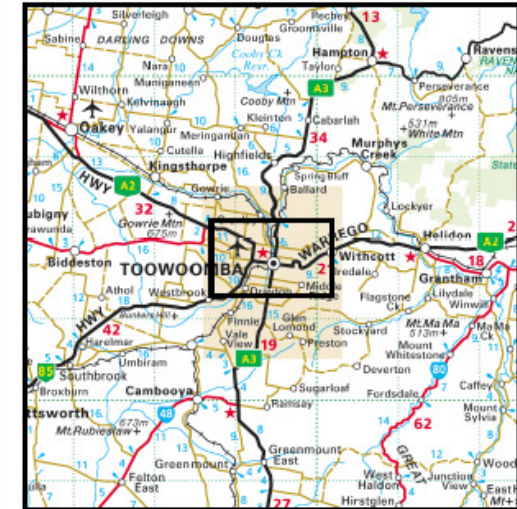
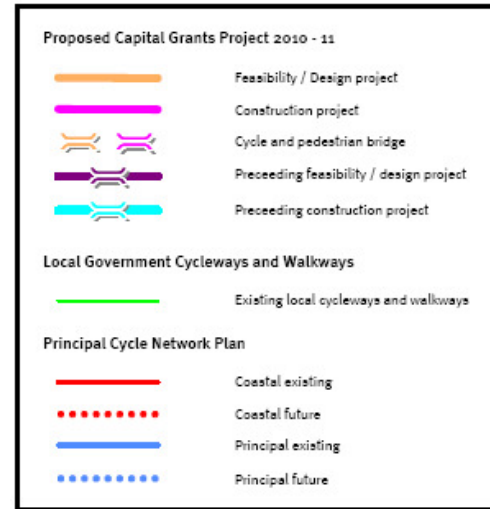
The project estimate is \$90,000.

Toowoomba Regional Council has committed \$45,000 to this project and is requesting:

- \$45,000 as a 2010-11 Capital Grant from the Cycle Network Program.

POLITICAL REPRESENTATION

- Federal – Hon Ian Macfarlane MP [Groom]
- State – Mr Kerry Shine MP [Toowoomba North] & Mr Mike Horan MP [Toowoomba South]
- Local – Cr Peter Taylor [Mayor]



WEST CREEK CROSSING UPGRADES

PROJECT DESCRIPTION

This project involves the improvement of road crossing facilities at the following locations along the West Creek pathway; Margaret Street and Dent Street, Bashford Street and Long Street, South Street and Water Street.

The project will improve the safety and accessibility of the existing pathways, providing a safer corridor.

Project works include improving road crossing facilities, terminal treatments, transition ramps and other safety improvements.

This project is part of the cycle network identified in the *South East Queensland Principal Cycle Network Plan*.

TRIP ATTRACTORS

- Toowoomba Base Hospital
- Toowoomba South Primary School
- St Saviours College
- City Golf Course
- Local Sporting and Recreational Facilities

FUNDING

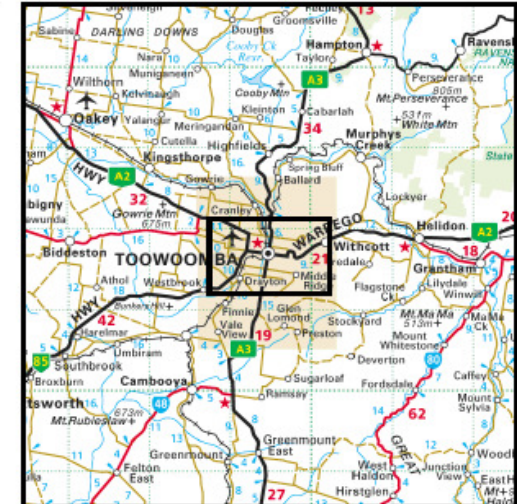
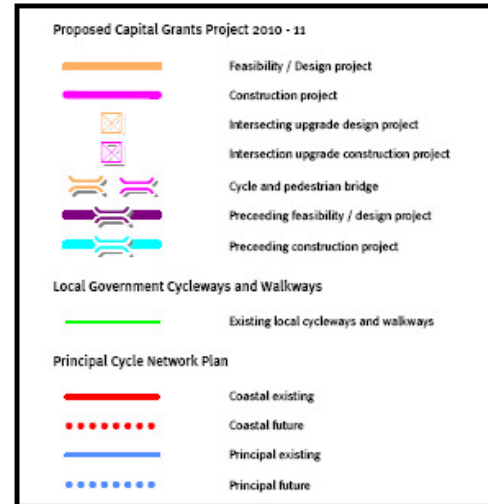
The project estimate is \$50,000.

Toowoomba Regional Council has committed \$25,000 to this project and is requesting:

- \$25,000 as a 2010-11 Capital Grant from the Cycle Network Program.

POLITICAL REPRESENTATION

- Federal – Hon Ian Macfarlane MP [Groom]
- State – Mr Kerry Shine MP [Toowoomba North] & Mr Mike Horan MP [Toowoomba South]
- Local – Cr Peter Taylor [Mayor]



WEST CREEK LIGHTING – LONG STREET TO JAMES STREET

PROJECT DESCRIPTION

This project involves the installation of lighting along the West Creek shared pathway between James Street and Long Street. The project will address the Crime Prevention through Environmental Design (CPTED) issue along the darkened area of pathway behind buildings

The project will improve safety and usability and encourage more users at night, in poor weather conditions and during winter months.

This project is part of the cycle network identified in the *South East Queensland Principal Cycle Network Plan*.

TRIP ATTRACTORS

- Toowoomba Base Hospital
- Toowoomba South Primary School
- St Saviours College
- City Golf Course
- Local Sporting and Recreational Facilities

FUNDING

The project estimate is \$25,000.

Toowoomba Regional Council has committed \$12,500 to this project and is requesting:

- \$12,500 as a 2010-11 Capital Grant from the Cycle Network Program.

POLITICAL REPRESENTATION

- Federal – Hon Ian Macfarlane MP [Groom]
- State – Mr Kerry Shine MP [Toowoomba North] & Mr Mike Horan MP [Toowoomba South]
- Local – Peter Taylor [Mayor]

