

Major traffic change

Brisbane bound on-ramp to Ipswich Motorway at Riverview

The Department of Transport and Main Roads is upgrading the Ipswich Motorway between Dinmore and Goodna and has formed Origin Alliance to deliver this project.

From Monday 13 September 2010, a new temporary on-ramp to the Ipswich Motorway (Brisbane bound) will be opened at the eastern end of McEwan Street at Riverview.

At this time, the current on-ramp from Station Road will be permanently closed to traffic.

Motorists who wish to access the new on-ramp from the Tessman Street overpass will be required to use the roundabout at the intersection of Station Road and McEwan Street.

Pedestrian access across McEwan Street will be relocated to the west of the roundabout and a temporary refuge island will be installed.

This change has been implemented so the project team can construct the permanent eastbound lanes of the motorway and will be in place for approximately 12 months.

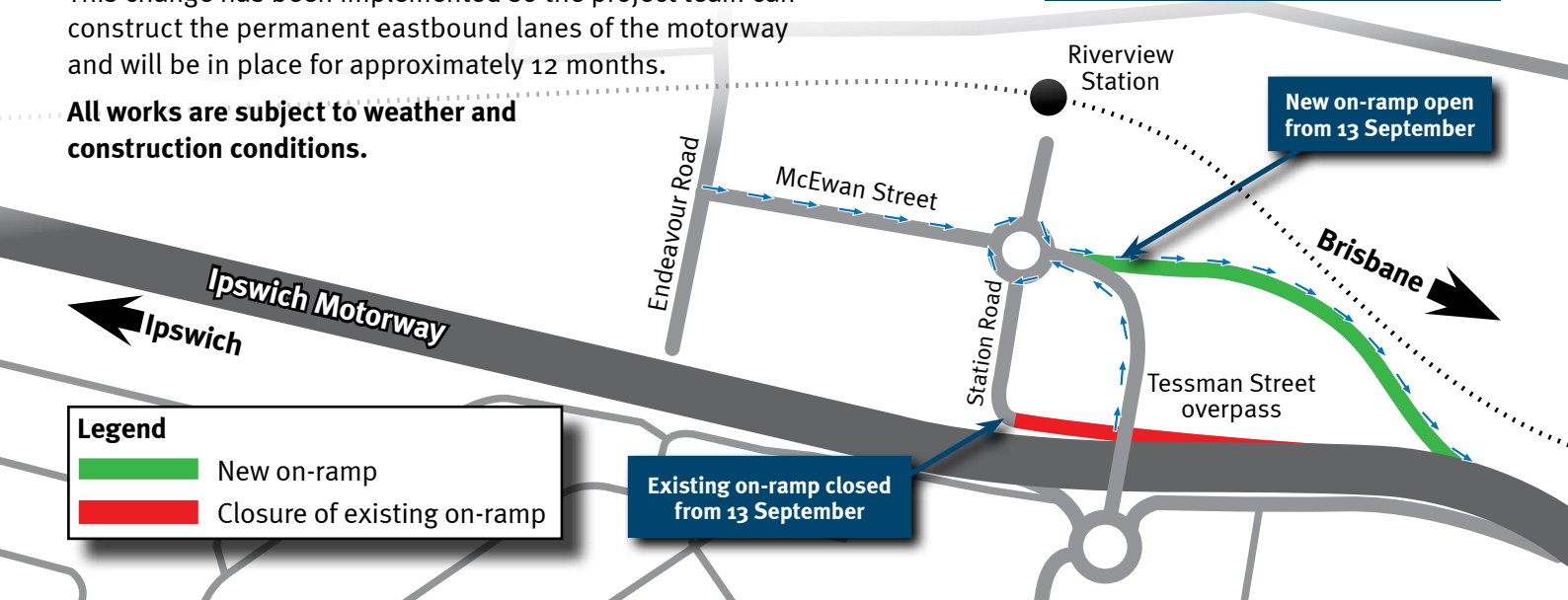
All works are subject to weather and construction conditions.

Directional signage will be in place and motorists are advised to pay attention to changed road conditions.

Ignoring roadwork speed limit signage is an offence and penalties apply.

We thank you for your cooperation and patience during these important works.

The community engagement team is available to answer any questions you may have on 1800 465 682.



Contact us

- Phone** 1800 465 682 *Freecall Australia wide. Higher rates apply from mobile phones and pay phones.*
- Post** Ipswich Motorway Upgrade: Dinmore to Goodna, PO Box 505, Booval Business Centre QLD 4304
- Email** dinmore2goodna@tmr.qld.gov.au
- Website** www.tmr.qld.gov.au/dinmore2goodna
- SMS** www.westerncorridorsms.qld.gov.au *Visit the website to receive free project updates direct to your mobile phone.*
- Public Transport** For more information visit www.translink.com.au or call Translink on 13 12 30, anytime.

