

Temporary closure of left turn from Mine Street off-ramp (Brisbane bound)

To facilitate works on the permanent section of the Mine Street off-ramp, the left turn lane from the Mine Street off-ramp (Brisbane bound) in Redbank will be closed temporarily from **5 am Monday 6 June 2011 for approximately seven days (and nights)**.

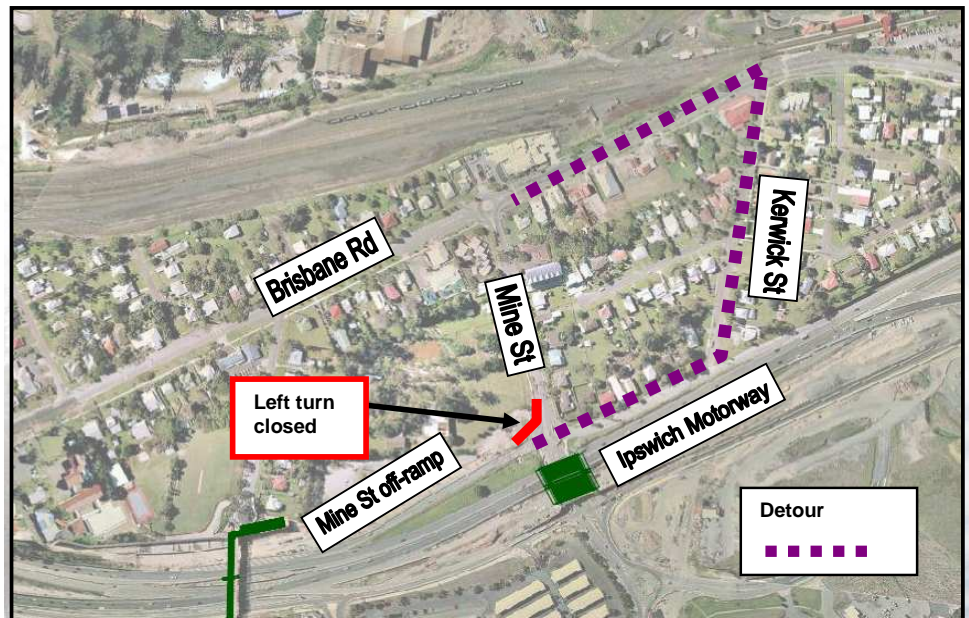
To access the north side of Redbank, motorists will need to travel through the lights at the intersection, turn left into Kerwick Street and then onto Brisbane Road (see map below).

Traffic control will be in place at the intersection of Kerwick Street and Brisbane Road each afternoon to assist motorists exiting this intersection.

Night works to complete the pavement and lay asphalt in this section will also be undertaken between 8 pm and 5 am each night from Monday 2 June to Saturday 11 June 2011.

Works are subject to weather and construction conditions.

Every effort will be made to minimise the impacts on the local community. We thank you for your cooperation and patience during these important works.



This project is delivered by the Department of Transport and Main Roads as part of the Origin Alliance.

Contact us

Phone: 1800 465 682
Free call Australia wide. Higher rates apply from mobile phones and payphones.

Post: Ipswich Motorway Upgrade Dinmore to Goodna
PO Box 505, Booval Business Centre Qld 4304

Email: dinmore2goodna@tmr.qld.gov.au

Website: www.tmr.qld.gov.au/dinmore2goodna

SMS: www.westerncorridorsms.qld.gov.au
Visit the website to receive free project updates direct to your mobile phone.

