

# Rail Corridor Study

April 2008

## Environmental Impact Statements (EIS)

As the Coordinator-General has declared the Landsborough to Nambour Rail Project a 'significant project', an Environmental Impact Statement (EIS) will be prepared for the preferred route in accordance with the *State Development and Public Works Organisation Act 1971*.

### What is an EIS?

An EIS is a document prepared to describe the effects of proposed activities on the environment. The term environment is both the natural and physical environment as well as the relationship of people with that environment. This means that the environment considered in an EIS includes land, water, air, structures, living organisms, environmental values at the site, and the social, cultural, and economic aspects.

An impact is a change in consequence that results from an activity. Impacts can be positive or negative or both. An EIS describes impacts, as well as ways to lessen or remove impacts.

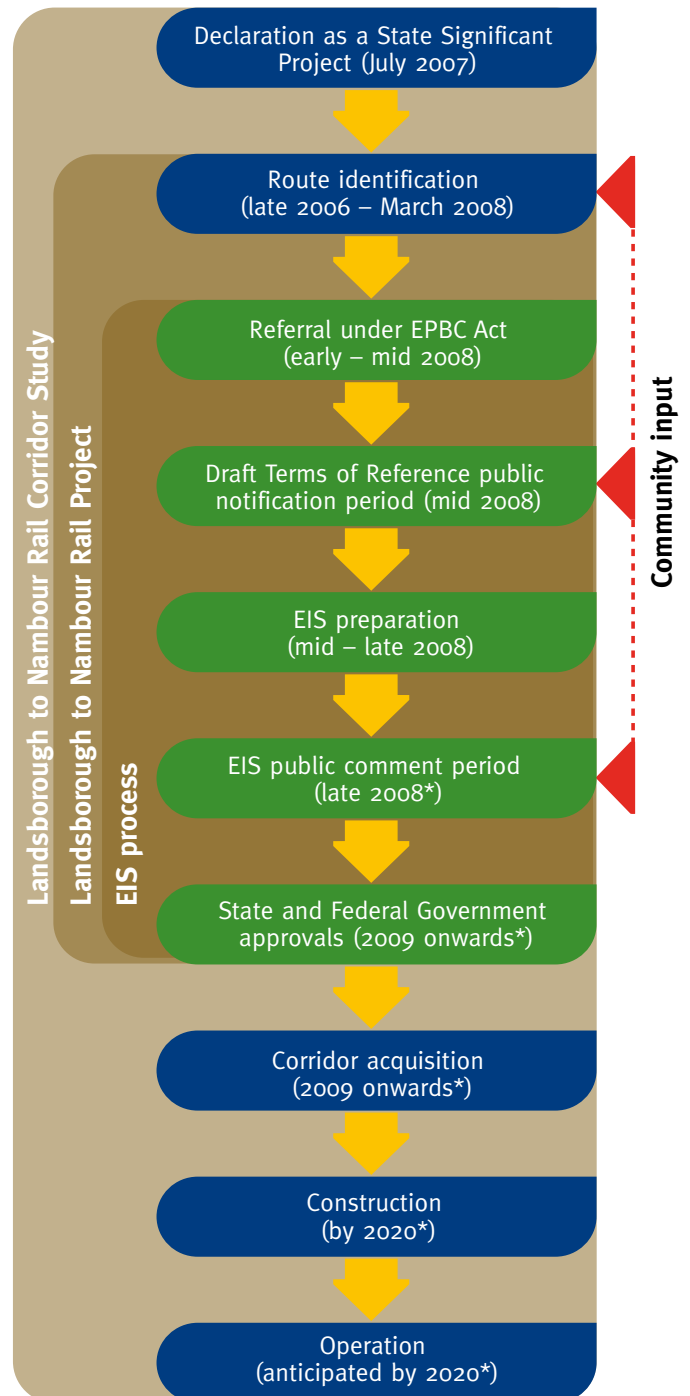
### When is an EIS required?

Only the most important or complex projects are generally declared to be significant projects, signalling that a robust assessment process is warranted involving whole-of-government coordination.

The Coordinator-General's decision to declare a project to be a 'significant project' does not infer Queensland Government backing of the project, rather it signals that the project warrants a robust environmental impact statement.

Visit [www.infrastructure.qld.gov.au](http://www.infrastructure.qld.gov.au) for more information about the Coordinator-General's role in the EIS process.

## The EIS process



For more information about the Landsborough to Nambour Rail Corridor Study, contact the study team:

**Phone:** 1800 221 991

**Email:** [railstudy@landsborough-nambour.com.au](mailto:railstudy@landsborough-nambour.com.au)

**Web:** [www.landsborough-nambour.com.au](http://www.landsborough-nambour.com.au)

**Post:** Reply Paid 4628, Sunshine Coast MC, QLD, 4560

## About the study

The Landsborough to Nambour Rail Corridor Study is an early phase of the Landsborough to Nambour Rail Project.

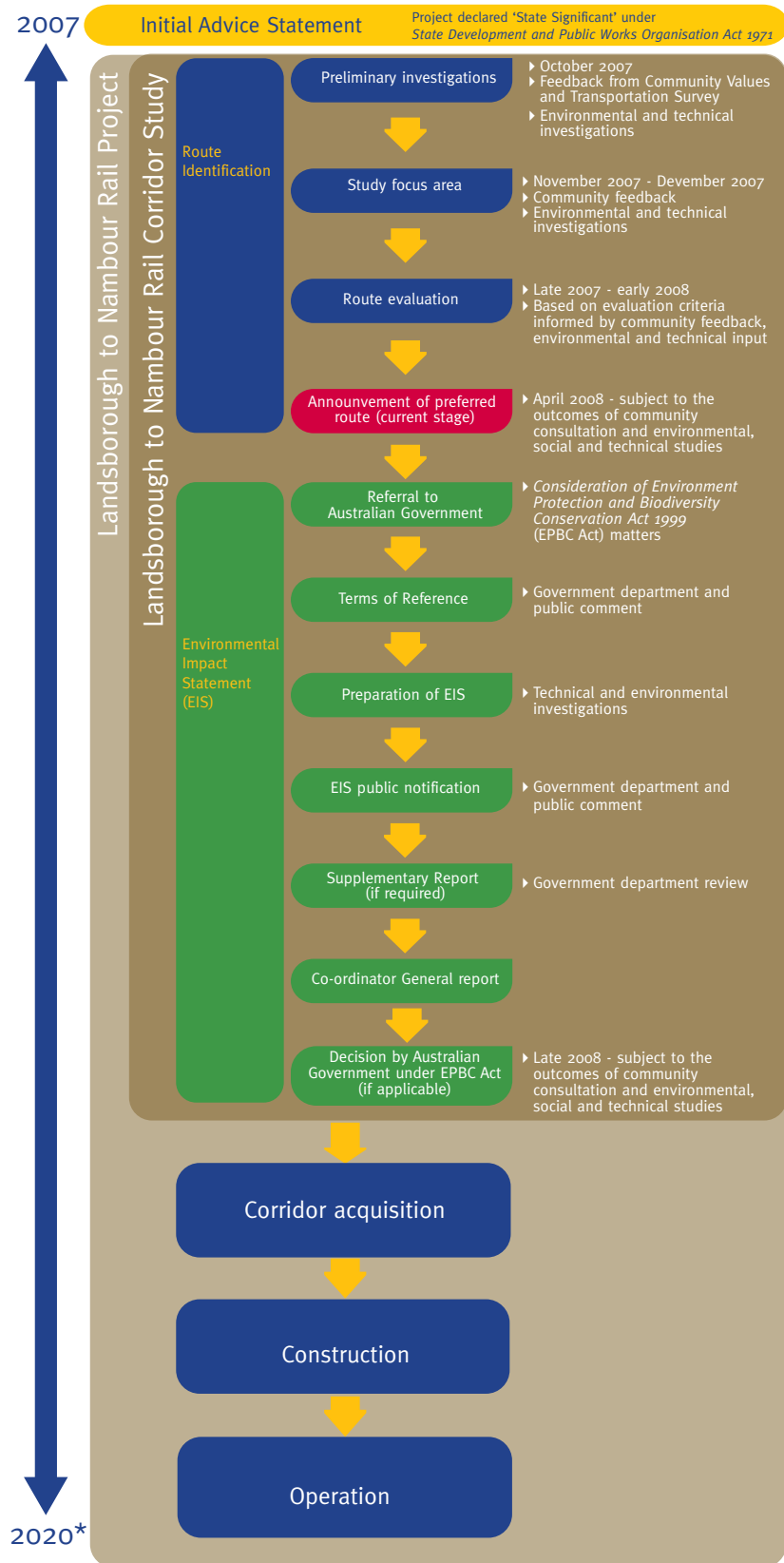
The Landsborough to Nambour Rail Project will include construction of a double-track railway along a predominantly new route, with room for extra tracks if required.

The project will improve the efficiency, service frequency, operating speeds and reliability of trains, and cater for the increasing demand for rail services in the corridor caused by population and freight transport growth.

The study is a significant, long-term planning project that will allow for a greater level of certainty around the future development and land use of the areas surrounding the North Coast Line.

By identifying the corridor now, Queensland Transport is providing for the future needs of both rail users and the communities that surround the corridor.

## Landsborough to Nambour Project Timeline



\*Based on SEQIPP 2007 - 2026

For more information about the Landsborough to Nambour Rail Corridor Study, contact the study team:

**Phone:** 1800 221 991

**Email:** [railstudy@landsborough-nambour.com.au](mailto:railstudy@landsborough-nambour.com.au)

**Web:** [www.landsborough-nambour.com.au](http://www.landsborough-nambour.com.au)

**Post:** Reply Paid 4628, Sunshine Coast MC, QLD, 4560



**Queensland Government**  
Queensland Transport