

Landsborough to Nambour

Rail Corridor Study

July 2009

Special management area Mooloolah

A significant amount of feedback was gathered from the Mooloolah community through the options consultation phase during October and November 2008. Key issues identified include:

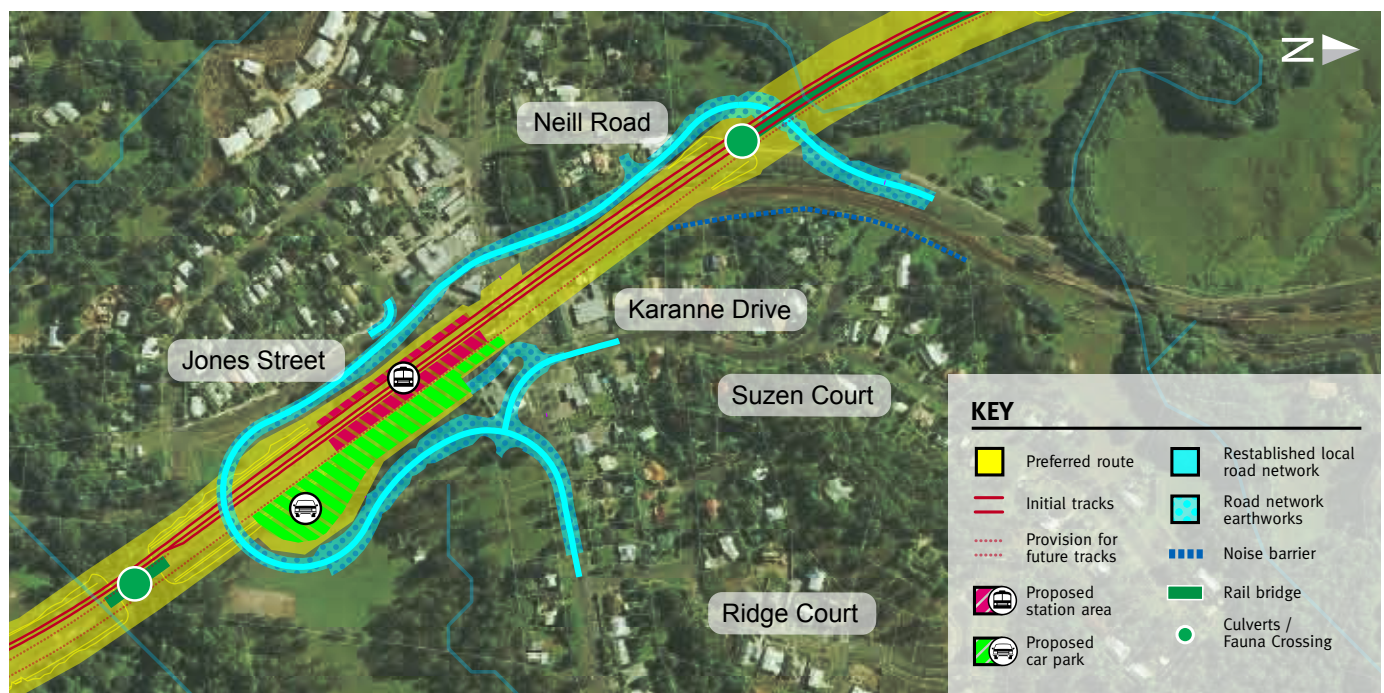
- Station design needs to fit with the historic context of the township.
- The impact of the new railway needs to be minimised for business and private property.
- Heritage features of the railway precinct need to be retained.
- Connectivity between the eastern and western sides of the town is important for pedestrians, cyclists and horses and their riders.

New option for Mooloolah

As a result of community feedback in late 2008, a new road and rail option for the Mooloolah township has been developed. The option includes:

- an initial three-track layout for the new railway that is wholly within the existing corridor and at a similar height to the existing railway through the township
- the identification and protection of the land required for a fourth track if needed in the future
- preservation of properties and businesses along Karanne Drive until a fourth track is needed
- realignment of Neill Road under the new railway to the north of Mooloolah with a clearance of 5.5 metres and improved flood immunity
- protection of an option for the replacement of the open level crossing with a road bridge at a time when risk and traffic congestion considerations determine the need for closure of the existing crossing.

The Department of Transport and Main Roads has identified a range of possible opportunities for the re-use of surplus rail corridor. These opportunities have been recommended to the Sunshine Coast Regional Council for consideration as part of the Council's master planning activities for townships along the proposed rail corridor.



Map shows the new road and rail option developed for Mooloolah.

For more information about the Landsborough to Nambour Rail Corridor Study, contact the study team:

Phone: 1800 221 991 (free call from landlines, charges may apply for mobile and pay phones)
 Email: railstudy@landsborough-nambour.com.au
 Web: www.landsborough-nambour.com.au
 Post: Reply Paid 4628, Sunshine Coast MC, QLD, 4560

Special management actions for Mooloolah

Design

- Design allows for the staged implementation of road network changes in line with risk and traffic congestion considerations.
- Heritage values of the pedestrian overbridge and waiting shed will be recognised and reflected in future station and surplus rail land planning.
- Design of the station and the eventual road overpass needs to be consistent with the context of the historic rail township, similar to the recent Landsborough Station upgrade.
- Road overpass will be an open structure to allow views and movement under the structure.
- Visual, noise, lighting and landscaping considerations will be integrated into the design of the road overpass.
- Community consultation will be ongoing during the detailed design phase, particularly in relation to the station design.

Construction

- Traffic will be managed during the construction of the project and the road overpass.
- If constructed early, the road overpass has the potential to alleviate some traffic impacts associated with the rail upgrade.

Operation

- The central express track will be used to provide additional capacity for non-stopping services.

Decommissioning of surplus rail land

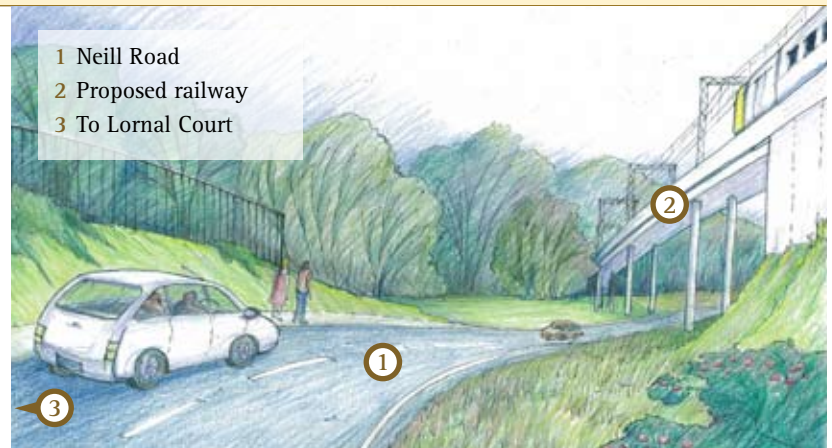
- Opportunities for the re-use of surplus rail land have been recommended to the Sunshine Coast Regional Council for consideration as part of Council's masterplanning activities for the railway towns.

Before



Artist's impression of the view to the new railway from Neill Road (including the rail overpass) to the north of Mooloolah station.

After



Before



Artist's impression of the view to the new Mooloolah Station area (after removal of the existing open level crossing).

After

