

Cyclist and pedestrian facilities overview

A key part of the Ipswich Motorway Upgrade: Dinmore to Goodna project involves upgrading existing and constructing new cyclist and pedestrian facilities.

The new and upgraded facilities will help improve access for cyclists and pedestrians in Goodna, Redbank, Riverview and Dinmore.

The cyclist and pedestrian facilities will include:

- approximately 14 kilometres of off-road shared pedestrian and cyclist concrete paths
- approximately 25 kilometres of on-road cycle lanes
- seven pedestrian and cyclist bridges
- three cross-motorway connections.

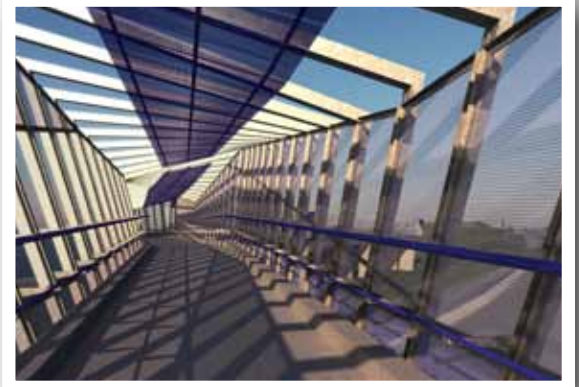
Some of the key features of the new and upgraded facilities include:

- easy access for wheelchairs and prams
- appropriate grading to ensure concrete paths are not too steep
- conveniently located hand and cyclist rails on shared cyclist and pedestrian bridges
- effective lighting
- throw screens to prevent objects from being dropped onto the Ipswich Motorway
- push button, traffic light controlled pedestrian crossings with priority cycle lanterns at major intersections
- directional and safety signage as well as on and off-road line marking to help guide cyclists and pedestrians along the route.

Once complete the facilities will link into a number of existing cycle routes between Dinmore and Goodna.

Construction will be ongoing until late 2012. Some sections of the pedestrian and cycle facilities are already in use including:

- Law Street shared cyclist and pedestrian bridge at Redbank
- Smiths Road shared cyclist and pedestrian concrete path and on-road cycle lanes
- various sections of completed pathways or service roads open to the public.



Contact us

Phone: 1800 465 682 *Free call Australia wide. Higher rates apply from mobile phones and payphones.*

Post: Ipswich Motorway Upgrade: Dinmore to Goodna, PO Box 505, Booval Business Centre QLD 4304






Email: dinmore2goodna@tmr.qld.gov.au **Website:** www.tmr.qld.gov.au/dinmore2goodna

SMS: www.westerncorridorsms.qld.gov.au *Visit the website to receive free project updates direct to your mobile phone.*

01325



Ipswich Motorway Upgrade: Dinmore to Goodna

-  Shared pedestrian and cyclist bridges
-  Cross-motorway connections
-  Shared concrete paths only
-  On-road cycle lanes only
-  Choice of shared concrete paths and on-road cycle lanes



Cyclist facilities

