

Ipswich Motorway on-ramp at Campbell Avenue to close permanently

On 15 May 2009, funding was announced for the second section of the Ipswich Motorway Upgrade from Wacol to Darra. Works will include the widening of the Ipswich Motorway from four lanes to six, with the provision for eight lanes in the future, west of Sandy Creek, Wacol to the Ipswich/Logan Interchange at Gailes.

This upgrade will improve safety, relieve congestion and enhance reliability for motorists.

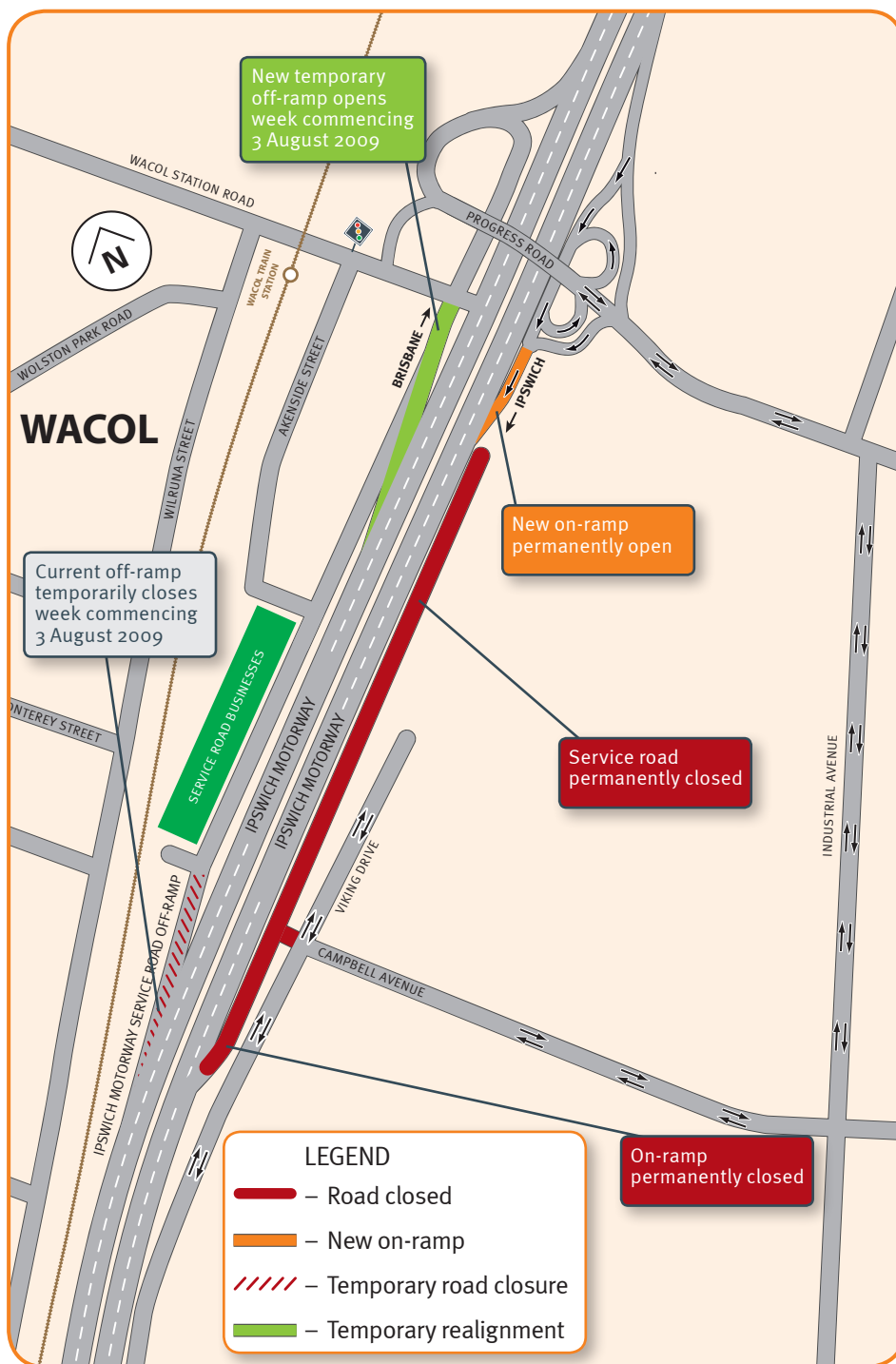
As part of the upgrade, the Ipswich Motorway on-ramp at Campbell Avenue will be permanently closed.

Traffic changes

Ipswich Motorway on-ramp at Campbell Avenue to close permanently

- » The Ipswich Motorway on-ramp (westbound) at Campbell Avenue will be permanently closed during the week commencing 3 August 2009.
- » A new on-ramp (westbound) will be open 300 metres east of the current on-ramp, closer to the Progress Road Interchange.
- » The Ipswich Motorway Service Road will be permanently closed from the Progress Road Interchange to Campbell Avenue.

Motorists wishing to access Viking Drive can do so via Industrial Avenue and Campbell Avenue.

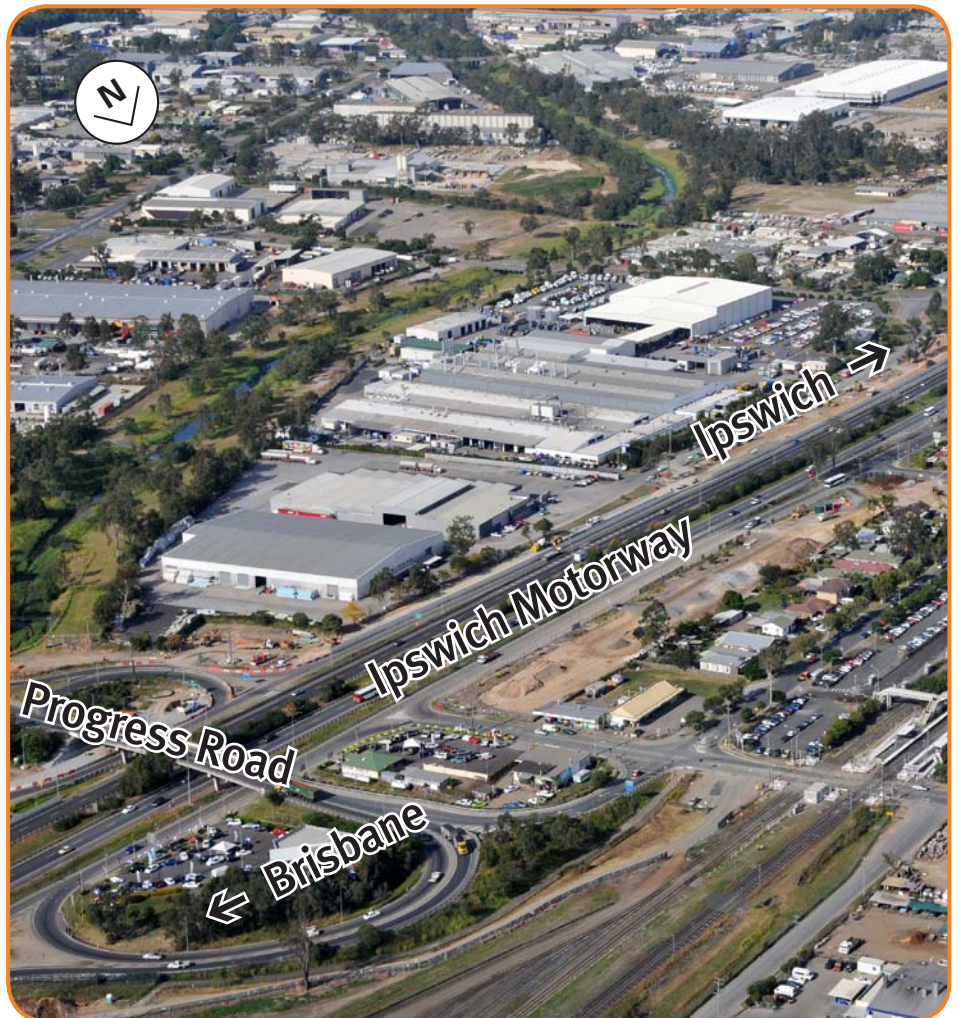


What has happened so far?

Early works on section two commenced in November 2008. These early works are an essential part of preparation for construction.

As part of these early works, a number of activities have taken place in Wacol. These activities include:

- » installation of site sheds near Campbell Avenue for site workers
- » relocation of public utility plant (PUP) services – Telstra, Energex, gas and water
- » construction of temporary access routes for construction vehicles
- » construction of a temporary service road on the southern side of the Ipswich Motorway to allow for relocation of service road traffic during motorway construction
- » clearing of vegetation along the Ipswich Motorway.



An aerial image of section two (May 2009)



Business briefings available

If you would like representatives from the project team to visit your business to speak about upcoming works and traffic changes, please contact the Community Engagement Team on 1800 605 410.

Contact us

Community Engagement Team

Phone

1800 605 410*

*Free call Australia Wide. Higher rates apply from mobile phones and pay phones.

E-mail

wacol2darra@mainroads.qld.gov.au

SMS updates*

www.westerncorridorsms.qld.gov.au

*Visit the website to receive free project updates direct to your mobile phone.

Post

Ipswich Motorway Upgrade
Wacol to Darra
Reply Paid, PO Box 942
Sumner Park BC QLD 4074
(no stamp required)

Website

www.mainroads.qld.gov.au/wacol2darra

Please slow down – roadwork safety is your responsibility too.

Work is subject to weather and construction conditions with dates subject to change.