

Landsborough to Nambour

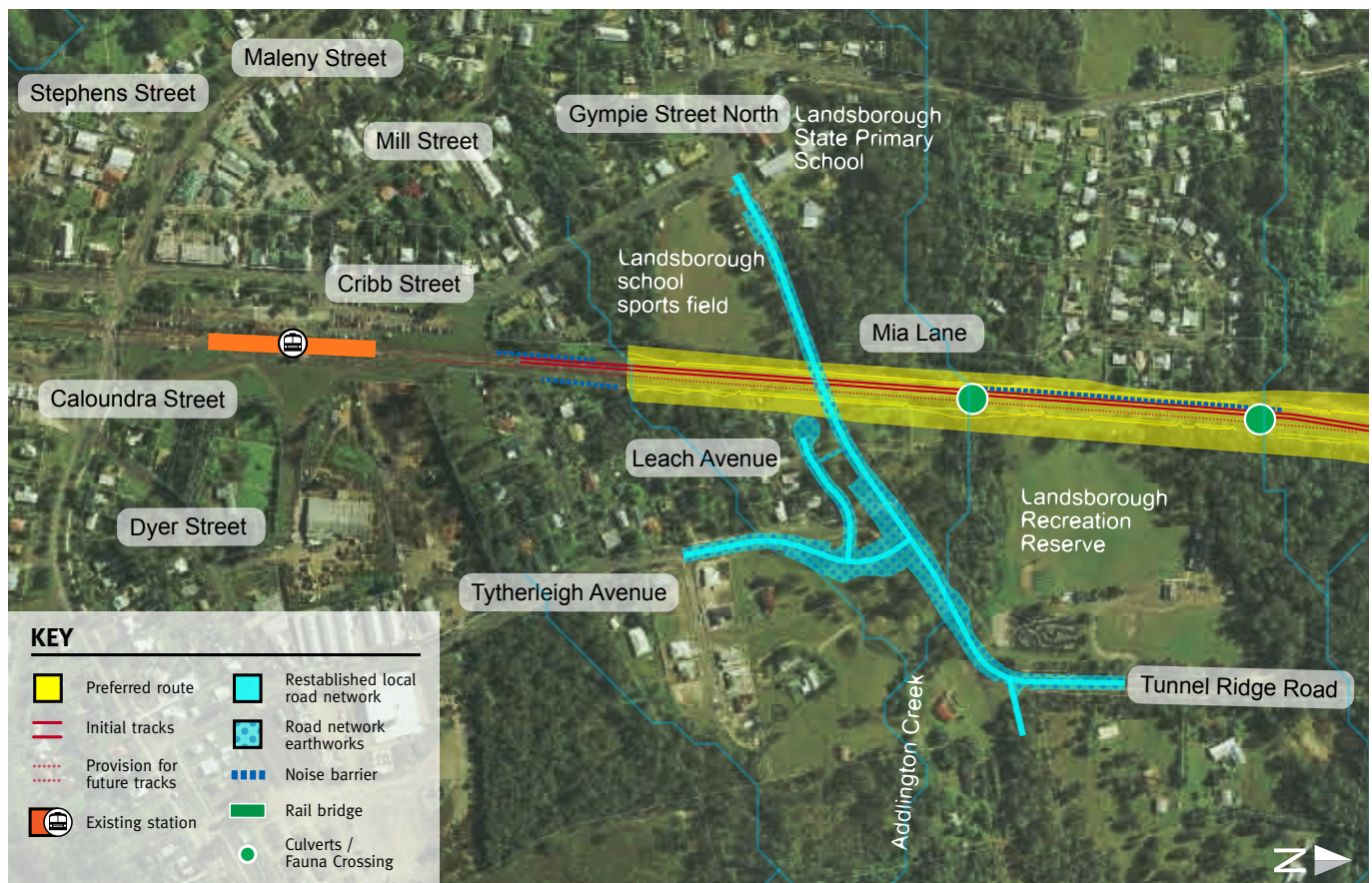
Rail Corridor Study

July 2009

Special management area Landsborough's school and recreation precinct

The proposed rail corridor will affect the school and recreation precinct in Landsborough resulting in a number of changes in this location. The option developed for this area includes:

- requirement of a portion of land along the eastern edge of the Landsborough State Primary School sports field
- removal of vegetation along the sports field's boundary requiring the installation of appropriate fencing
- requirement of a portion of land along the western edge of the Landsborough Recreational Reserve (also known as the Landsborough Sportsground)
- replacement of the open level crossing at Gympie Street North with a road overpass that maintains access across the railway and between the school and its sports field
- realignment of the Tytherleigh Avenue and Gympie Street North intersection
- re-establishment of property accesses in the vicinity of the new Gympie Street North overpass.



Map shows the location of the proposed rail corridor and associated road network changes for Landsborough's school and recreation precinct.

For more information about the Landsborough to Nambour Rail Corridor Study, contact the study team:

Phone: 1800 221 991 (free call from landlines, charges may apply for mobile and pay phones)
 Email: railstudy@landsborough-nambour.com.au
 Web: www.landsborough-nambour.com.au
 Post: Reply Paid 4628, Sunshine Coast MC, QLD, 4560

Special management actions for Landsborough's school and recreation precinct

Design

- Access and car parking arrangements for the school and its sports field were taken into consideration during the design process.
- A safe access point for students, staff and the community to pass between the sports field and school is required.
- Land requirements from the recreational reserve will be minimised through the use of retaining walls and other design elements.

Construction

- Temporary car parking and student drop off areas will be provided for the duration of construction.
- Construction activity will occur within school holidays where possible.
- Construction activities will be scheduled to minimise disturbance during events at the Landsborough Recreational Reserve where possible.
- A traffic management plan will be developed for local traffic during construction.

Operation

- There are no operational impacts in this area that will require mitigation.

Decommissioning

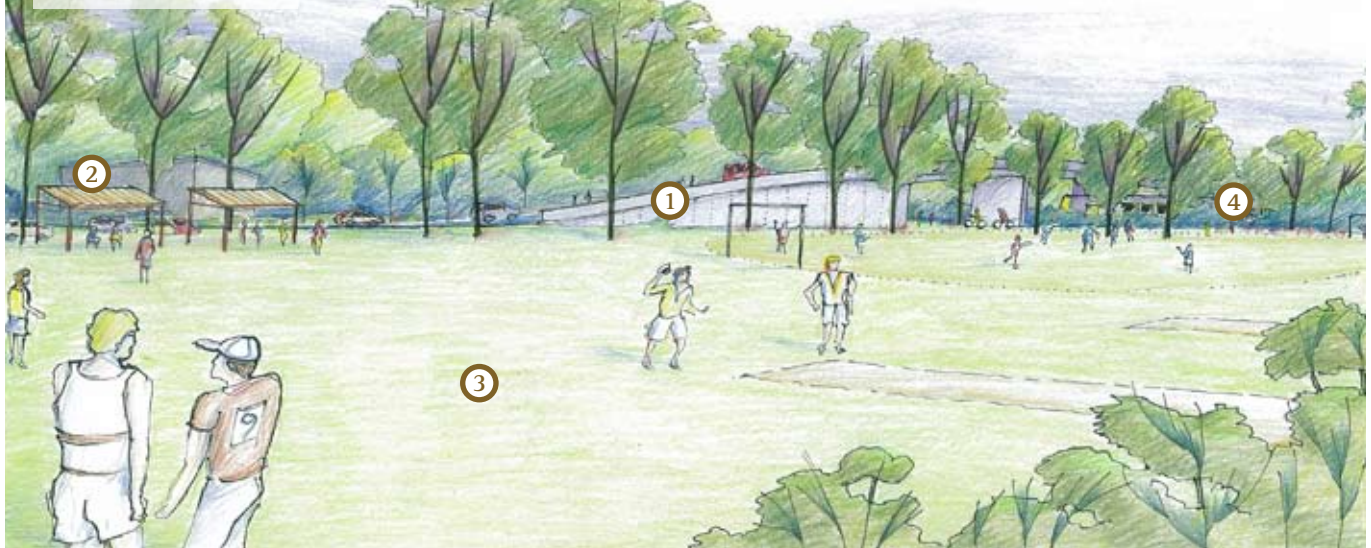
- No decommissioning activities will be required in this area as the existing rail corridor will be re-used as part of the proposed rail corridor.

Before



After

- 1 Gympie Street North
- 2 Landsborough State Primary School
- 3 School sports fields
- 4 Railway line



Artist's impression of the view to the new road overpass at Gympie Street North from the Landsborough State Primary School sports field.