

Landsborough to Nambour

Rail Corridor Study

July 2009

Special management area Palmwoods

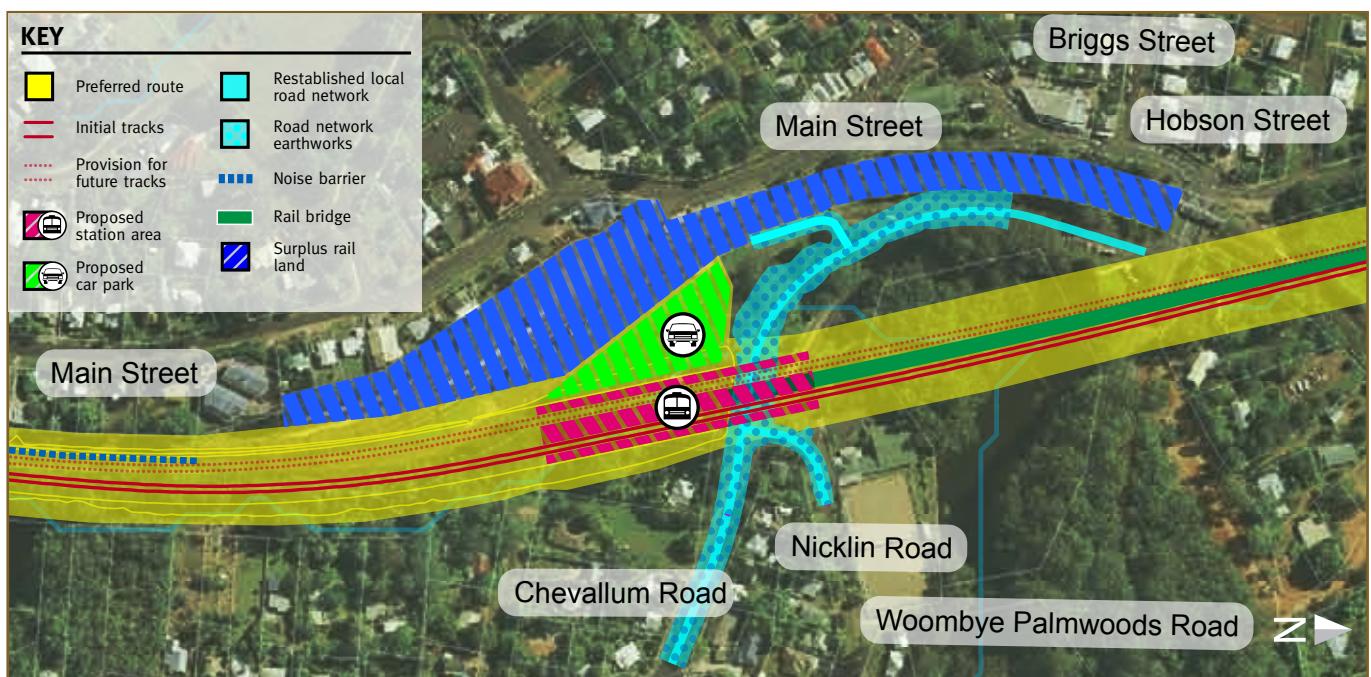
Key issues for the Palmwoods community highlighted through community feedback include:

- the impact on Kolora Park needs to be minimised
- the importance of connectivity between the rail station and the township
- the need for appropriate noise treatments to be incorporated into the bridge structures
- the station design needs to fit with the historic context of the township
- using surplus railway land to link the new station and the township.

The road and rail option for Palmwoods has not changed since the options consultation phase, although community feedback has been taken into consideration for activities around the rail corridor. The option includes:

- railway will be realigned to pass to the east of the town centre at a similar height to the existing railway
- new railway built on a bridge structure through the township to minimise impacts on Kolora Park and Paynter Creek and to ensure flood immunity further along the rail corridor
- rail station will be located partly on the structure approximately 8 metres above ground level
- new railway will pass over the Palmwoods Bowls Club car park on a bridge structure
- Chevallum Road will be realigned to pass under the new railway with clearance of approximately 5.5 metres
- decommissioning the existing railway will provide opportunities to use surplus rail land to improve access between the station area and the township.

The Department of Transport and Main Roads has identified a range of possible opportunities for the re-use of surplus rail corridor. These opportunities have been recommended to the Sunshine Coast Regional Council for consideration as part of the Council's master planning activities for townships along the proposed rail corridor.



Map shows the road and rail option developed for Palmwoods.

For more information about the Landsborough to Nambour Rail Corridor Study, contact the study team:

Phone: 1800 221 991 (free call from landlines, charges may apply for mobile and pay phones)
 Email: railstudy@landsborough-nambour.com.au
 Web: www.landsborough-nambour.com.au
 Post: Reply Paid 4628, Sunshine Coast MC, QLD, 4560

Special management actions for Palmwoods

Design

- The use of a bridge structure through Palmwoods will minimise the impact on Kolora Park and Paynter Creek.
- Community consultation will be ongoing during the detailed design phase, particularly in relation to the visual and noise impact of the bridge structure.
- Chevallum Road has been redesigned to accommodate the proposed railway.
- Chevallum Road and Nicklin Road intersection will be realigned.
- The initial two tracks will be built on a single bridge with additional tracks added on a separate bridge structure if required.
- Noise barriers will be designed to take into consideration surrounding land uses and the heritage values of the railway township.

Construction

- Vegetation under the bridge structure will be selectively cleared to retain vegetation of up to 10 metres tall.
- Construction tracks will be created within the existing rail corridor or the new rail corridor, and will not affect remnant vegetation in the area.
- Sediment and erosion control measures will be implemented to protect waterways during construction.

Operation

- Noise barriers will mitigate the operational noise impact of the new railway.

Decommissioning of surplus rail land

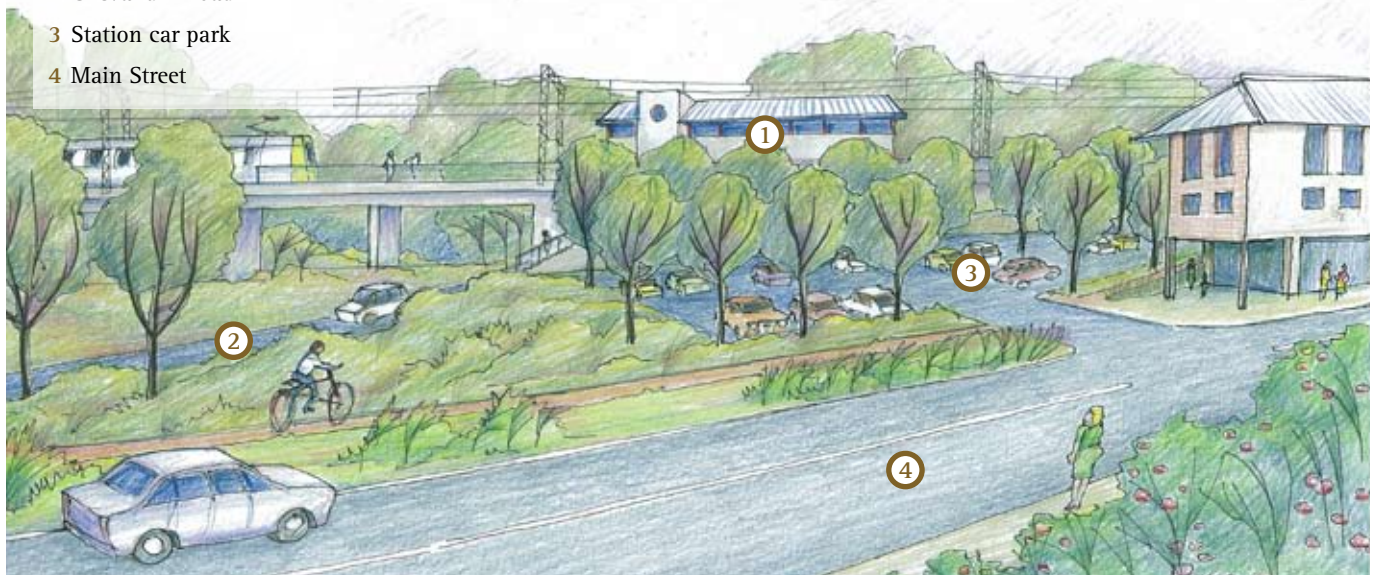
- Opportunities for the re-use of surplus rail land have been recommended to the Sunshine Coast Regional Council for consideration as part of Council's masterplanning activities for the railway towns.

Before



After

- 1 New Palmwoods station
- 2 Chevallum Road
- 3 Station car park
- 4 Main Street



Artist's impression of the view to the new Palmwoods station looking east from Main Street.