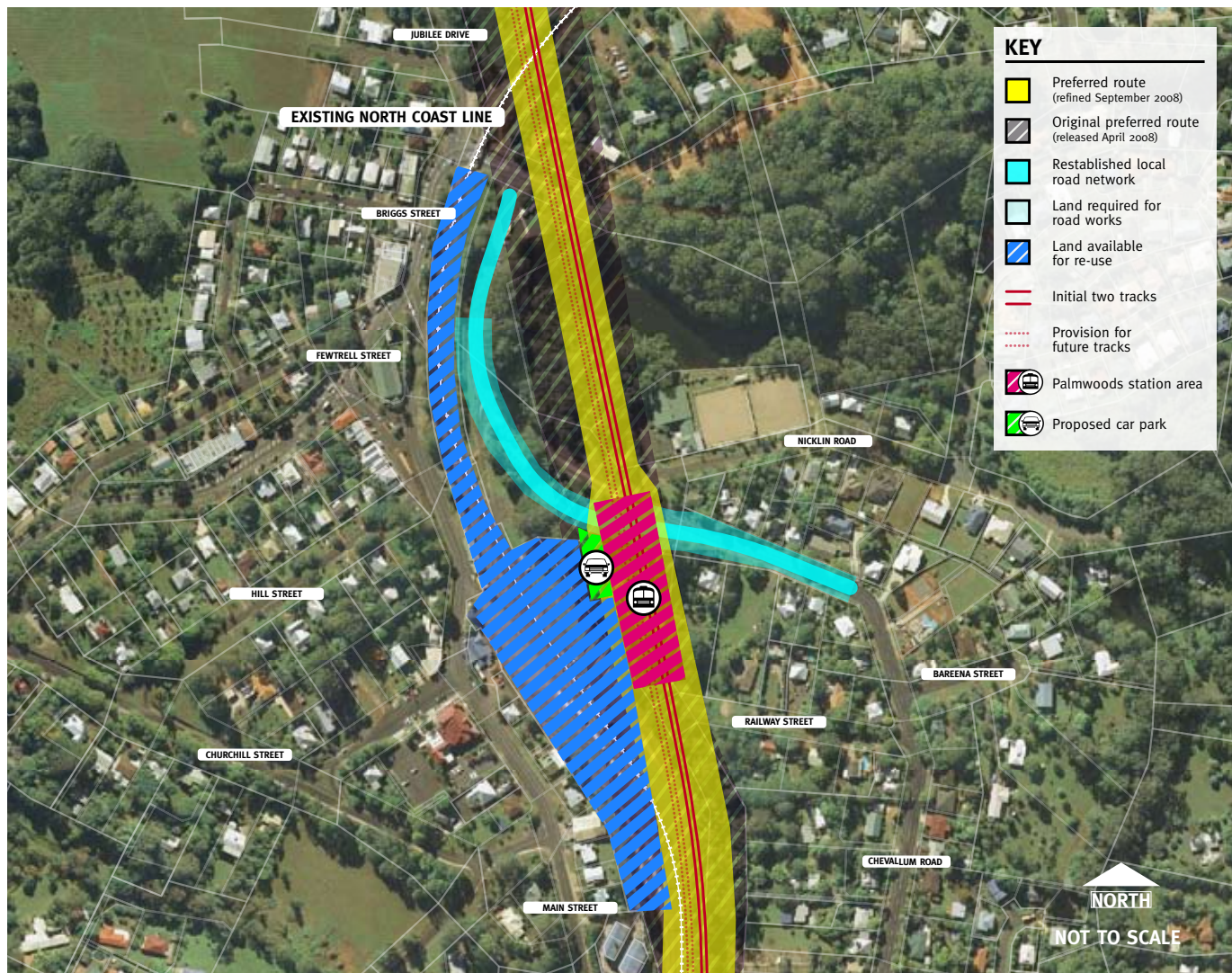


Landsborough to Nambour

Rail Corridor Study

September 2008

Palmwoods



Description

The study team has developed a single option for consideration by the local community.

- station located east of the existing station on a bridge structure at a similar level to the existing rail line
- minor realignment of Chevallum Road under the new rail line
- station accessed via Chevallum Road

- bridge spanning duck pond area, bowls club car park, Chevallum Road and Woombye-Palmwoods Road
- maintains open space and visibility under and across the bridge structure.

Opportunities

- bridge height provides scope to improve local roads in the future
- use of redundant rail land for alternative purposes.

For more information about the Landsborough to Nambour Rail Corridor Study, contact the study team:

Phone: 1800 221 991 (free call from landlines, charges apply for mobile phones)

Email: railstudy@landsborough-nambour.com.au

Web: www.landsborough-nambour.com.au

Post: Reply Paid 4628, Sunshine Coast MC, QLD, 4560