



PLATFORM LEVEL
RL. 29.35

PLAZA LEVEL
RL. 21.52

ROAD LINE DASHED

G100 RL. 18.27
G20 RL. 18.56

1 SECTION
1:50 @ 41

LEGEND

- 1 PLAZA
- 2 ENTRY
- 3 CIRCULATION TOWER
- 4 STATION BUILDING
- 5 PLATFORM
- 21 COVERED BICYCLE RACKS

NOTES:
REFER TO DRAWING SHEET 04 TO UNDERSTAND
HOW THE TOWER FITS INTO THE STATION

2 3D VIEW
1:50



Mango Hill East Station Artistic Impression

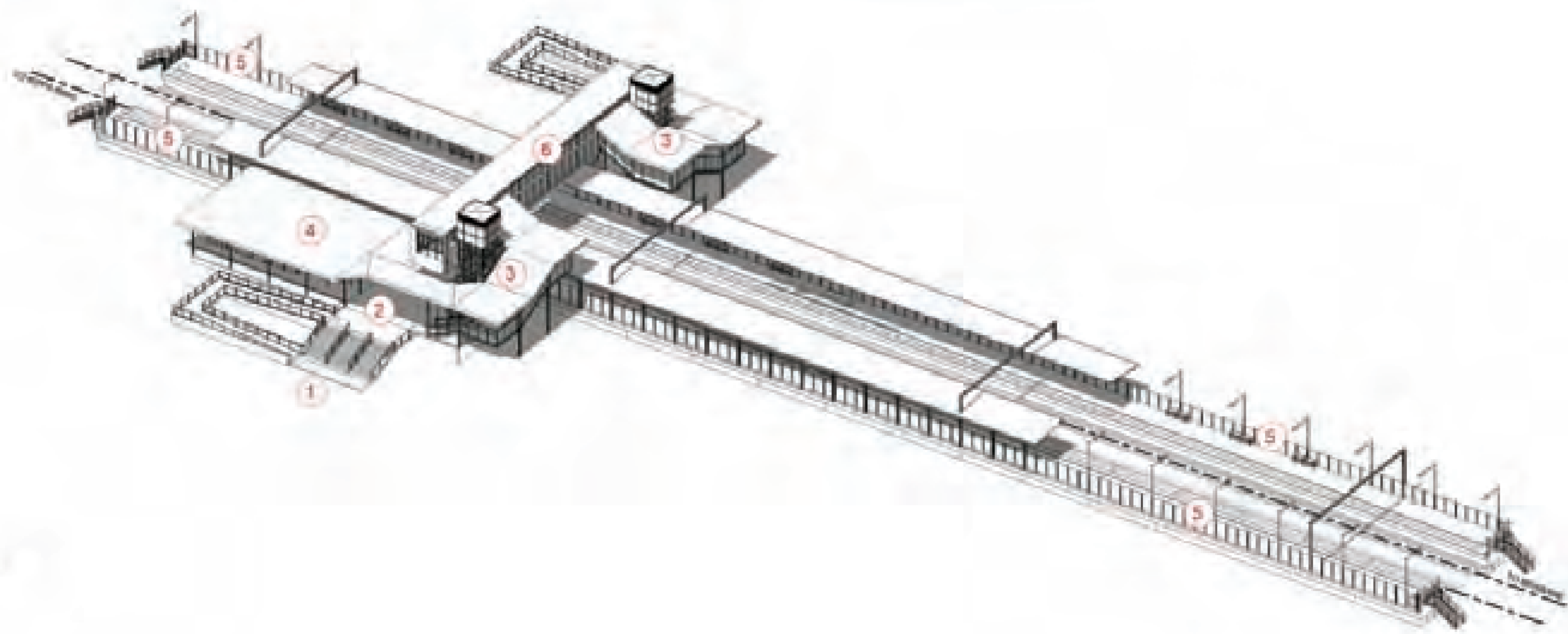
LEGEND

- 1 PLAZA
- 2 ENTRY
- 3 CIRCULATION TOWER
- 4 STATION BUILDING
- 5 PLATFORM
- 6 PEDESTRIAN OVERPASS

NOTE: REFER TO DRAWING DETAILS TO ESTIMATE FOR DETAILS OF TREE CRANES



1 SECTION
10000



2 3D VIEW
10000

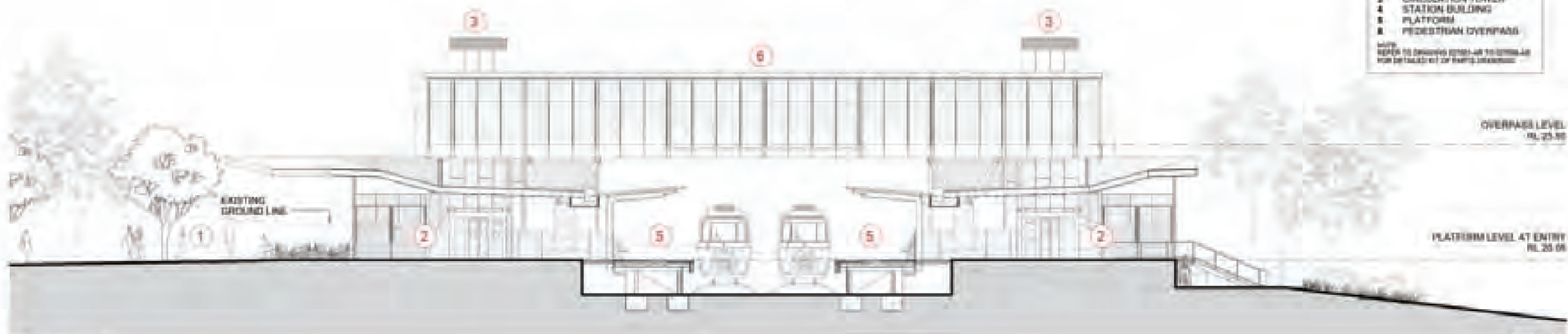


Mango Hill Station Artistic Impression

LEGEND

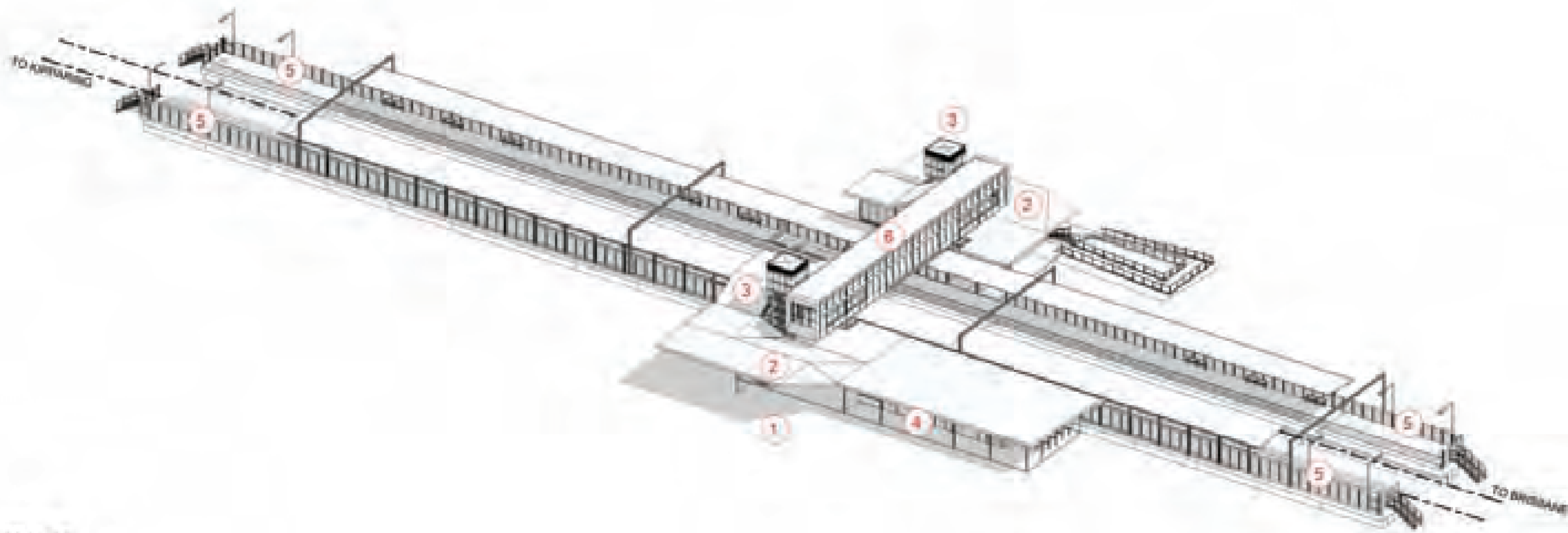
- 1 PLAZA
- 2 ENTRY
- 3 CIRCULATION TOWER
- 4 STATION BUILDING
- 5 PLATFORM
- 6 PEDESTRIAN OVERPASS

NOTE: REFER TO DRAWING 0201-02 TO OVERPASS FOR DETAILS OF RAMP DESIGN



1 SECTION
1:00/0.50

0150 RL 5.50
0200 RL 5.10



2 3D VIEW
0.50

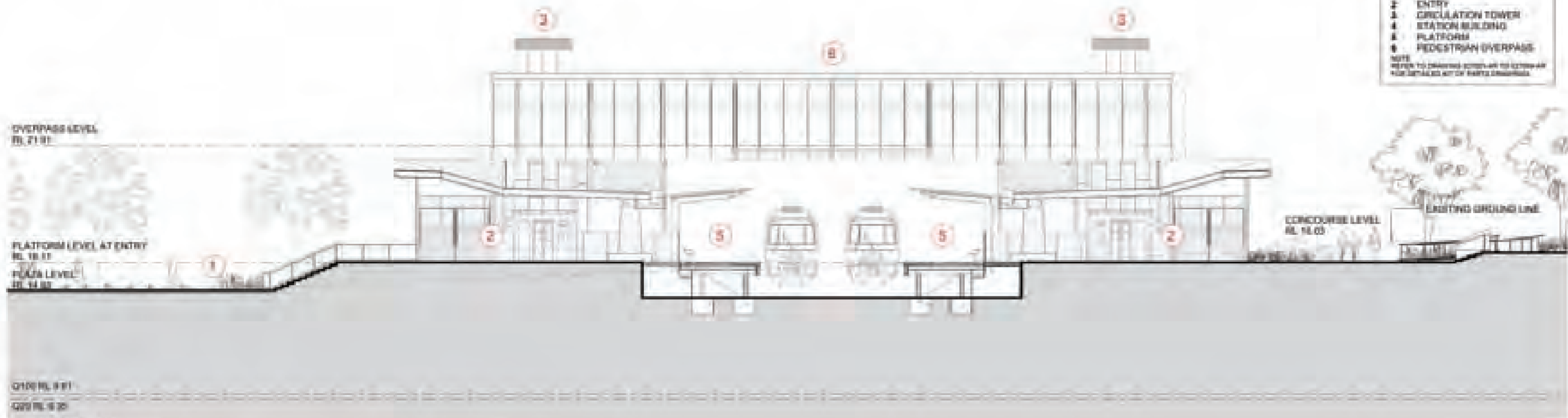


Murrumba Downs Station Artistic Impression

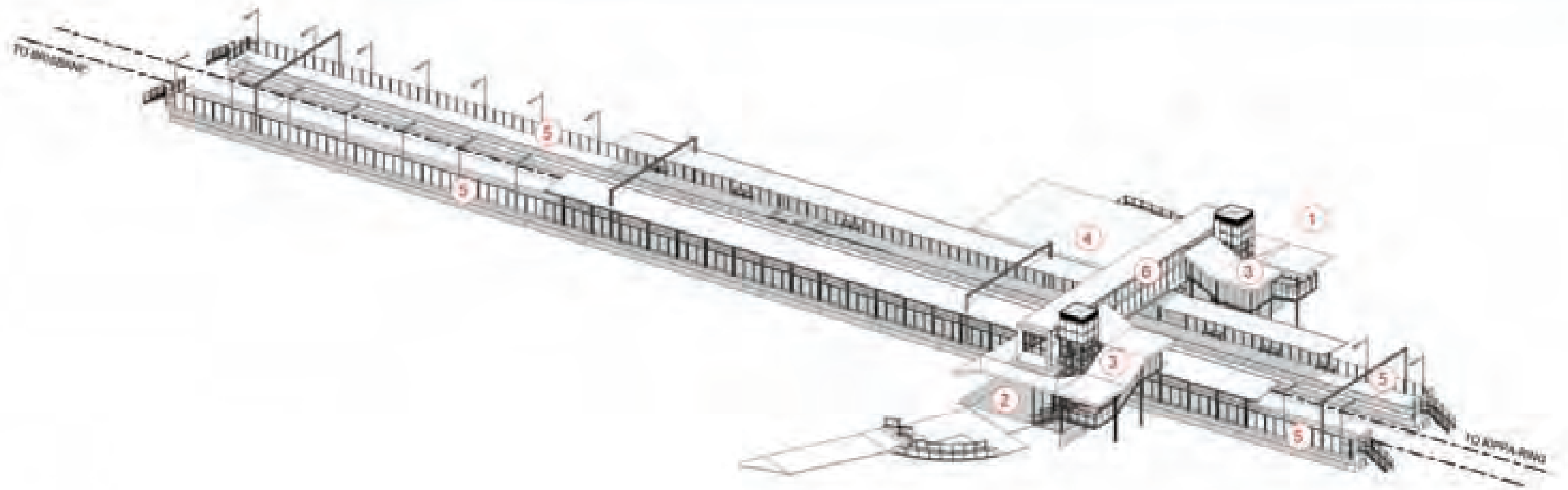
LEGEND

- 1 PLAZA
- 2 ENTRY
- 3 CIRCULATION TOWER
- 4 STATION BUILDING
- 5 PLATFORM
- 6 PEDESTRIAN OVERPASS

NOTE: REFER TO DRAWINGS 0201 AND 0202 FOR EXACT AND FULL DETAILS AND OF PARTS SHOWN.



1 SECTION
1:20 @ A1



2 3D VIEW
1:20 @ A1



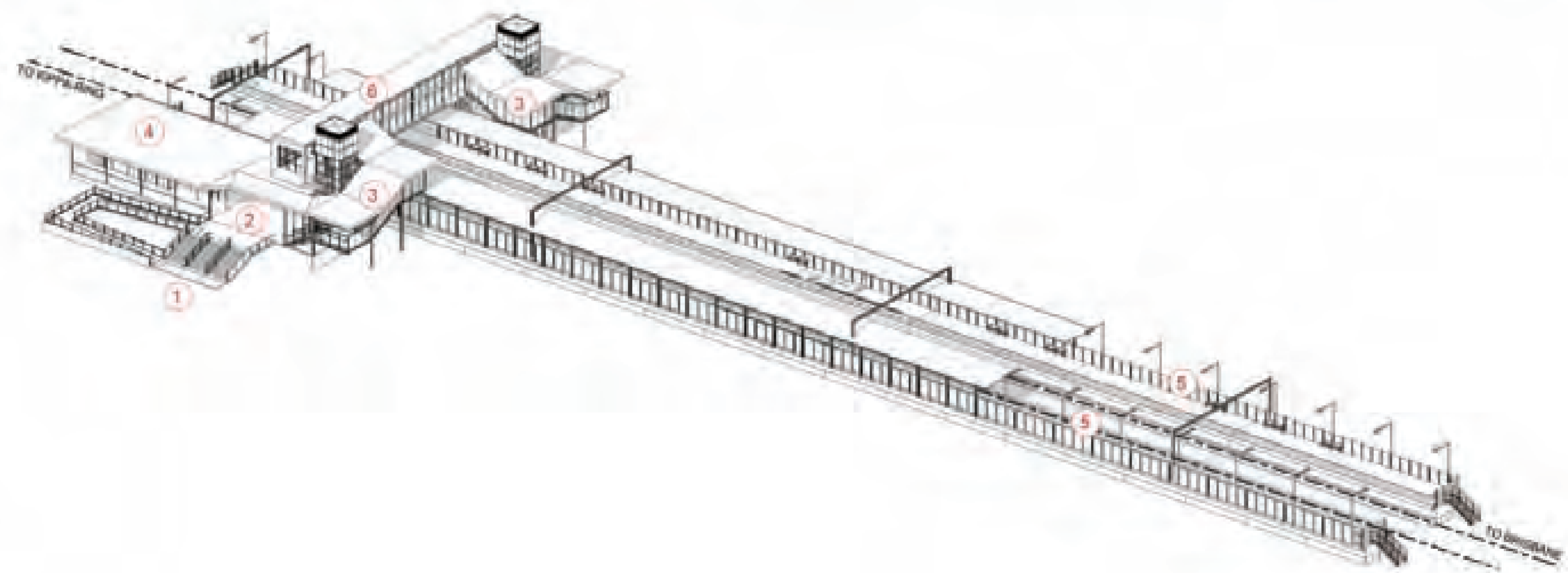
Rothwell Station Artistic Impression

LEGEND	
1	PLAZA
2	ENTRY
3	CIRCULATION TOWER
4	STATION BUILDING
5	PLATFORM
6	PEDESTRIAN OVERPASS

NOTE:
REFER TO DRAWING SPECIFIC TO STATION FOR DETAILED SET OF ART'S DRAWINGS



1 SECTION
1/2000



2 3D VIEW
1/2000