



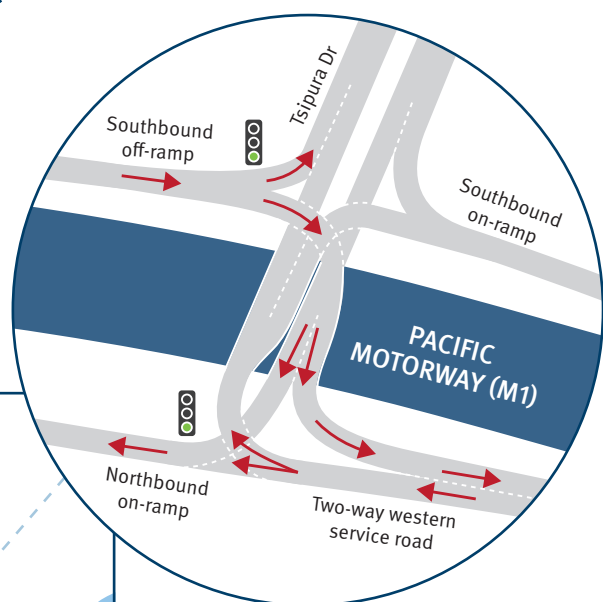
March 2020

Burleigh to Palm Beach – Package B

Pacific Motorway (M1) Varsity Lakes to Tugun Upgrade

Tallebudgera Interchange (Exit 89)

The Tallebudgera Interchange at Exit 89 will be upgraded to cater for more traffic as a result of the new western service road and to help reduce the heavy reliance on the Palm Beach (Exit 92) interchange. The new design will allow safer and more convenient access to, from and across the motorway.



Key features

- replace the existing loop ramps with a relocated northbound off-ramp and an extended northbound on-ramp
- install traffic signals at all on-ramps to manage traffic flows entering the M1
- relocate the northbound off-ramps to south of Tallebudgera Creek, connecting to a new western service road (see overleaf for details)
- install signalised intersections at the northbound and southbound off-ramps and at the intersection of Tispura Drive and Township Drive
- significant bridge construction works:
 - construct two new bridges at Tispura Drive
 - construct two new bridges for the new western service road and the southbound on-ramp across Tallebudgera Creek
 - widen existing northbound and southbound motorway bridges across Tallebudgera Creek.

What to expect

The VL2T upgrade has multiple technical design and construction elements, making it more efficient to separate and deliver in packages. Doing it this way will make sure construction work can roll on as soon as the current Mudgeeraba to Varsity Lakes upgrade is completed in mid-2020.

By 2021, all motorway widening works along the 10-kilometre route will be in construction at the same time. This ensures the full benefits of each package will be realised simultaneously, removing the potential to push congestion hotspots further down the line, as sometimes happens with a staged approach.

Water, sewer, power and telecommunications will be relocated before motorway widening works can begin. This early work is expected to be underway throughout 2020 in various locations between Varsity Lakes and Tugun. Package A Varsity Lakes to Burleigh motorway widening works will also begin in the second half of 2020.

Have your say

Your feedback on the upgrade is important and we would like to hear your views on the design for the Varsity Lakes to Tugun upgrade.

The project team will be available to answer your questions at community information sessions. Visit the TMR website for details on session times and locations or scan the QR code to be taken to the website.



In the meantime, for further information, contact the team on the below details:

Freecall: 1800 799 824*
(during business hours, 9am–5pm, Monday to Friday)

Email: VL2T@tmr.qld.gov.au

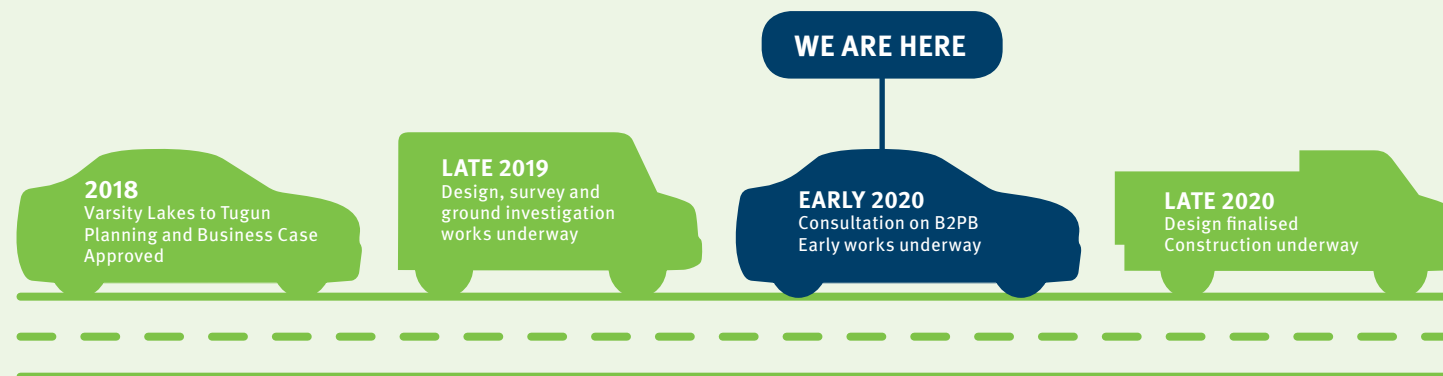
Website: www.tmr.qld.gov.au

Post: Department of Transport and Main Roads
PO Box 442, Nerang QLD 4211

* Check with your service provider for call costs.

Fact sheets and other supporting material is also available on the TMR website.

B2PB project timeline



The Varsity Lakes to Tugun (VL2T) upgrade stretches over 10 kilometres of the M1 and by catering for projected traffic growth, will benefit the national freight network, tourism operators and commuters by reducing congestion, providing more efficient traffic flows, and improving safety and travel time reliability.

The Burleigh to Palm Beach (B2PB) section is Package B of the VL2T upgrade and will widen almost 3.5 kilometres of the motorway.

About the Burleigh to Palm Beach package

In addition to widening the M1 to a minimum of three lanes in each direction, preserving a rail corridor and installing smart motorway technologies, the B2PB package includes:

- upgrading the Tallebudgera Interchange (Exit 89)
- constructing six new bridges and widen existing bridges
- constructing the northern section of a new two-way western service road starting at Exit 89 and continuing to Palm Beach (Exit 92)
- building a fauna underpass up to 15-metres wide and 55-metres long to connect the Burleigh to Springbrook bioregional wildlife corridor
- continuing the connection of a dedicated active transport path from Varsity Lakes to Tallebudgera, transitioning to active transport paths on the new western service road.

Key features include



3.5 kilometres of road widening



New two-way western service road



Minimum 3 lanes in each direction and up to 5 in some locations



Tallebudgera Interchange (Exit 89) upgrade



New active transport connections



Increased environmental protections



Burleigh to Palm Beach – Package B

Package A Varsity Lakes (Exit 85) to Burleigh (Exit 87)
 Consultation completed: November 2019 Construction begins: mid-2020

Package B Burleigh (Exit 87) to Palm Beach (19th Avenue)
 Community consultation: March 2020 Construction begins: late 2020

Package C Palm Beach (19th Avenue) to Tugun (Exit 95)
 Community consultation: March 2020 Construction begins: early 2021

New DDI at Burleigh (Exit 87)

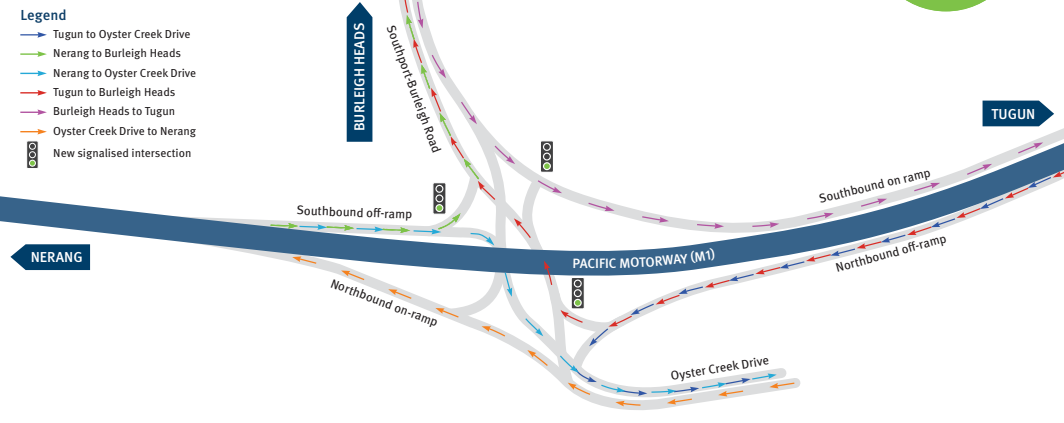
A realigned and longer northbound off-ramp will connect in to the new Diverging Diamond Interchange (DDI) at Exit 87 (refer to Package A Varsity Lakes to Burleigh website for details on the DDI).



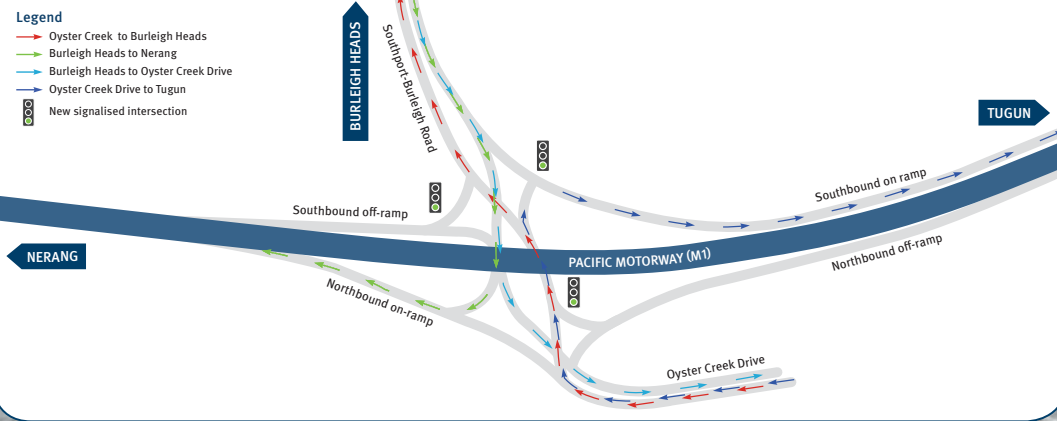
Old Coach Road Connection

The City of Gold Coast (council) is leading the planning and delivery of a connection between Old Coach Road and the new DDI at Exit 87. The VL2T project team has worked with council to ensure the new DDI will cater for future traffic flows when the connection is provided.

How the DDI will work - M1 traffic movements



How the DDI will work - moving through the DDI



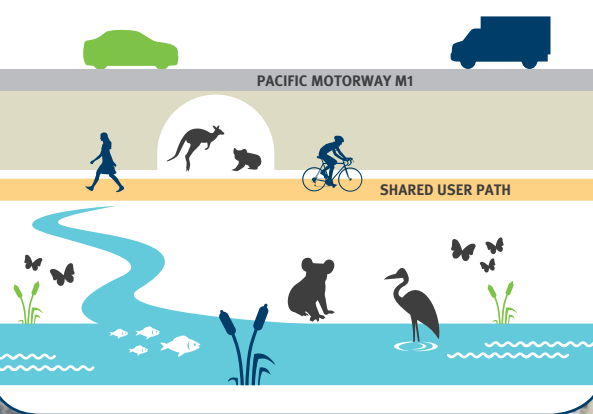
Increased environmental protections

Package B includes significant environmental benefits, particularly because this is a sensitive flora, fauna and aquatic area of the VL2T upgrade.

A new fauna crossing will be constructed under the motorway to reconnect the Burleigh to Springbrook bioregional wildlife corridor. Landscaping treatments such as native tree and plant species will be included, along with fencing to encourage fauna movements through this underpass.

Additional measures include roosting areas for micro-bats, improved fish passage through drainage structures and fish resting pools upstream of Oyster Creek.

Increased environmental protections



New active transport connections

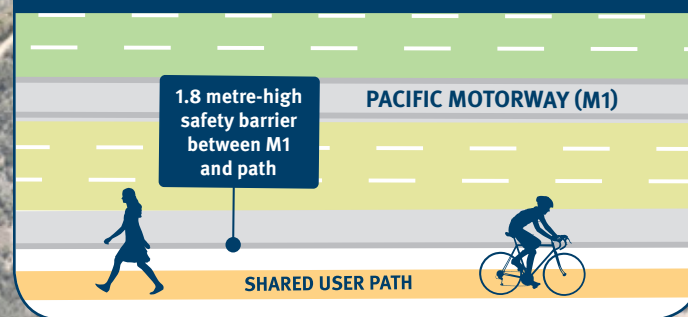
A new shared bike and pedestrian path will be built on the western side of the M1 between Burleigh (Exit 87) and Tallebudgera (Exit 89). Connected to the new shared path built in Package A Varsity Lakes to Burleigh, this will deliver the missing link for active transport users, giving them a separated and dedicated connection from Varsity Lakes to Tallebudgera.

South of Tallebudgera Creek, on the western service road, the shared path will transition to a separated bike lane and pedestrian path. By separating pedestrians and cyclists, safety and functionality will be improved.

A new shared user path will also be constructed along Tshipura Drive. This shared path will connect to Tallebudgera Creek Road and Township Drive.

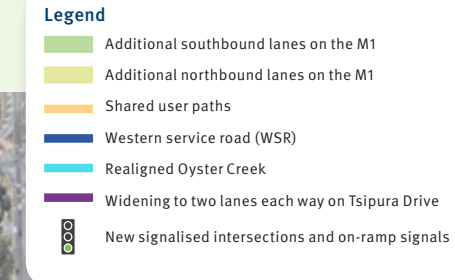
These new shared user paths will help to expand cycling connectivity and active transport opportunities.

Shared user path between Exits 85 and 89



Tallebudgera Interchange (Exit 89) upgrade

Exit 89 at Tallebudgera will be completely reconstructed. The existing northbound loop ramps will be removed and the northbound off-ramp will be relocated south of Tallebudgera Creek. This relocated northbound off-ramp will connect via a new bridge crossing to a new two-way service road on the western side of the M1. On-ramps and off-ramps will also be extended on both sides of the motorway, and a new signalised intersection will be installed at Township Drive.



New two-way western service road (WSR)

A new two-way service road on the western side of the M1 will be built between Tallebudgera (Exit 89) and KP McGrath Drive (Exit 92).

The WSR will have one lane in each direction and an additional bridge connection across Tallebudgera Creek. The WSR will provide residents of West Burleigh, Tallebudgera, Palm Beach and Elanora an alternative local route to the motorway.

Local traffic will be able to connect to the WSR via the new relocated off-ramp at Tallebudgera (Exit 89), a new signalised intersection at Nineteenth Avenue, and at KP McGrath Drive (Exit 92).

Western service road (WSR)

