

Waterford – Tamborine Road Intersection Upgrade (Anzac Avenue to Hotz Road)

July 2017

About the works

The Department of Transport and Main Roads is partnering with Economic Development Queensland to deliver a \$40 million intersection upgrade on Waterford–Tamborine Road from Logan Village to Yarrabilba.

The project will provide long-term benefits to the community by increasing road network capacity and improving traffic flow to cater for current and expected future traffic volumes.

The construction contract has been awarded to Doval Constructions Pty Ltd and includes:

- Widening Waterford – Tamborine Road between Anzac Avenue and Hotz Road from two to four lanes by providing an additional lane in each direction.
- Signalising of the intersections of Anzac Avenue, Stockleigh road, Pioneer Drive and Hotz Road with Waterford – Tamborine Road to provide improved access for local residents and provide safe crossing points for pedestrians and cyclists.
- Signalised emergency access to provide time-efficient and safe passage for Fire and State Emergency Services.
- Vegetation clearing, fencing and earthworks to facilitate the upgrade.

Timeframes

This project will begin construction in August 2017 and is due for completion by early 2019. It is important to note that wet weather, contractor and site conditions may change this work schedule.

What to expect

The site compound will be established on the eastern side of the Stockleigh Road intersection. Residents can expect increased levels of noise, vibration and dust in surrounding areas.

Standard work hours and days will be Monday to Saturday, 6am to 6pm, however it is expected some night works will be required.

During construction:

- Motorists can expect lane closures, reduced speed limits, increased congestion and construction vehicles entering and exiting from site compound. Please drive to the conditions and allow extra travel time.
- Residents near to the work zone may experience increased noise, dust and vibration, however
- Every effort will be made to minimise construction impacts and monitoring will be carried out during the project.

Keeping informed

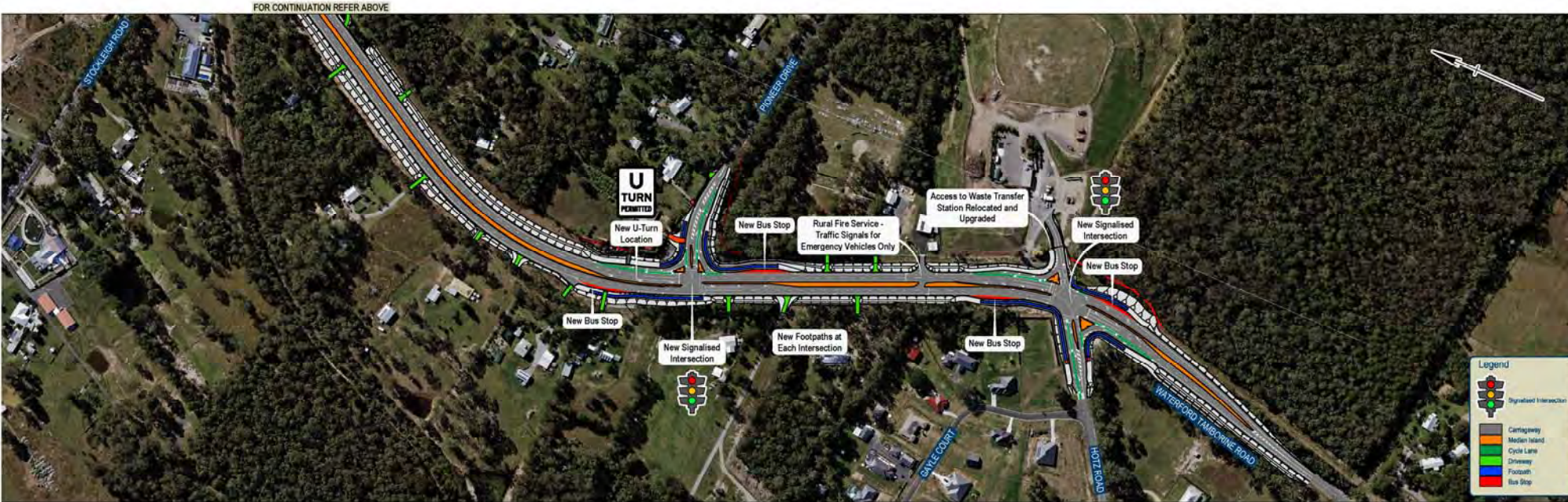
To keep up-to-date subscribe to the free SMS or email traffic alert services. For more information:

Phone: 1300 311 253*
 Email: waterfordtamborineroad@tmr.qld.gov.au
 Web: www.tmr.qld.gov.au/projects
www.QLDTraffic.qld.gov.au (for traffic and travel updates)

Waterford – Tamborine Road Intersection Upgrade (Anzac Avenue to Hotz Road)



FOR CONTINUATION REFER BELOW



FOR CONTINUATION REFER ABOVE

Legend

- Signalised Intersection
- Carriageway
- Median Island
- Cycle Lane
- Footpath
- Bus Stop