

Automatic Number Plate Recognition (ANPR) Camera System Coding Manual

A Transurban Queensland Group standard

Document code

ITS-MAN-001

Approval authority

Head of Technology

Document owner

ITS Operations Manager QLD

Document author

Andrew Warren

Confidentiality Statement

Information in this document must be kept confidential as per its classification below, and the rules of disclosure.

All documents within the Transurban Queensland Group are classified in the following way: **PUBLIC** documents are intended for anyone, **COMMERCIAL IN CONFIDENCE** documents are to be kept confidential between restricted individuals within the Transurban Queensland Group and partner organisations.

COMPANY CONFIDENTIAL documents are to be kept confidential within the Transurban Queensland Group, and used for normal business activities by the general office population, **HIGHLY CONFIDENTIAL** documents are to be kept confidential to restricted individuals within the Transurban Queensland Group.

This document is uncontrolled if printed.

©Copyright Transurban Queensland Holdings 1 Pty Limited ABN 64 169 090 804. All rights reserved. No part of this publication may be reproduced, stored in a retrieval system, or transmitted in any form or by any means, electronic, mechanical, photocopying, recording or otherwise, without the written permission of Transurban Queensland Holdings 1 Pty Limited.

Classification **PUBLIC**

Contents

- 1. Purpose 3**
- 1.1 AirportLinkM7 Tunnel 4
- 1.2 Legacy Way Tunnel 6
- 1.3 Clem Jones Tunnel 7

- 2. Glossary 9**

AUTOMATIC NUMBER PLATE RECOGNITION (ANPR) CAMERA SYSTEM CODING MANUAL

1. Purpose

The purpose of this ANPR Camera System Coding Manual is to define the Data blocks for the ANPR camera systems for each of Transurban Queensland's tunnel assets.

The following Tolling Points and Tolling Point IDs may be used in Data blocks.

	Asset	Tolling Point ID	Location	Lane(s)	Travel Direction
Tolling Point	Airportlink M7	TP01A	Toombul – prior to EWA and Sandgate Roads exit ramp diverge	3	Eastbound
Tolling Point	Airportlink M7	TP01B	Toombul – after EWA and Sandgate Roads entry ramp merge	2	Westbound
Tolling Point	Airportlink M7	TP02A	Bowen Hills – after Clem7, Inner City Bypass (ICB), Bowen Bridge Road and Campbell Street entry ramp merge	4	Northbound
Tolling Point	Airportlink M7	TP02B	Bowen Hills – prior to portal exit to Clem7 exit ramp From AirportlinkM7	2	Southbound
Tolling Point	Airportlink M7	TP02C	Bowen Hills – prior to portal exit to Inner City Bypass (ICB) and Campbell Street exit ramps from AirportlinkM7	2	Southbound
Tolling Point	Airportlink M7	TP02D	Bowen Hills – prior to portal exit to Lutwyche Road - exit ramp from AirportlinkM7	1	Southbound
Tolling Point	Clem Jones Tunnel	CLM01	Bowen Hills – prior to portal exit of Clem7	2	Northbound
Tolling Point	Clem Jones Tunnel	CLM02	Bowen Hills – prior to portal entry of Clem7	2	Southbound
Tolling Point	Legacy Way Tunnel	LGW03	Toowong – prior to portal entry of Legacy Way	2	Eastbound
Tolling Point	Legacy Way Tunnel	LGW04	Toowong – prior to portal exit of Legacy Way	2	Westbound

AUTOMATIC NUMBER PLATE RECOGNITION (ANPR) CAMERA SYSTEM CODING MANUAL

1.1 AirportLinkM7 Tunnel



Airport Link TP02A_Rear_Colour_16 - 2014-Apr-23 09:02:49.151055 AEST

Data Block Example	Airport Link	TP02A	_Rear_Colour_16	- 2014-Apr-23	09:02:49.151055	AEST
Text field/Parameter Meaning	Tolling Operator / Asset	Tolling Point ID	ANPR Camera and Gantry	Date image was produced	Time image was produced	Time Zone

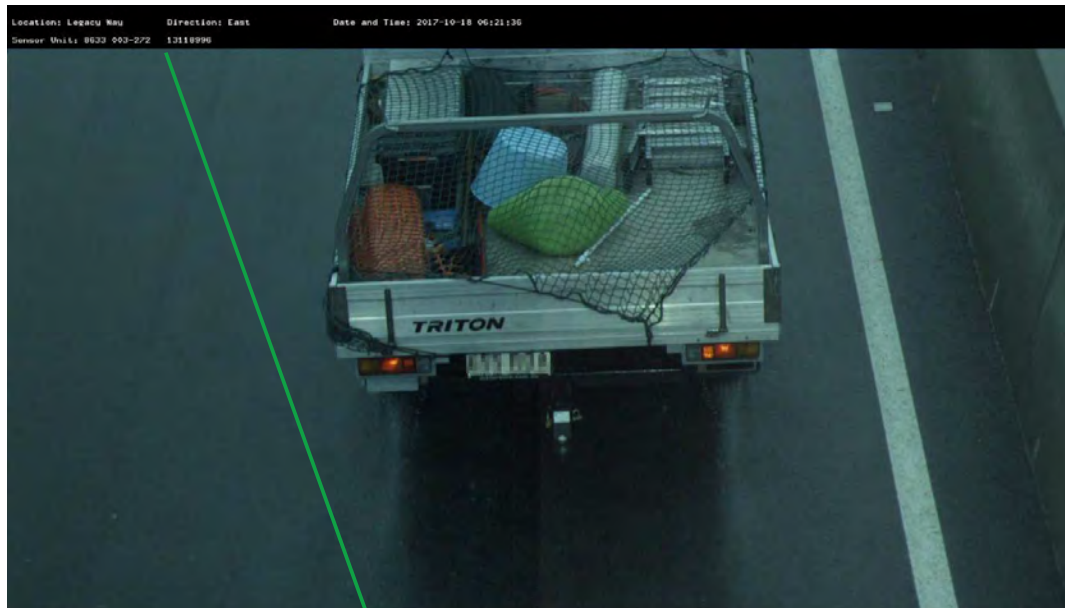
Text field/Parameter Meaning	Explanation
Tolling Operator/Asset	Image was taken for vehicle travelling through AirportlinkM7 motorway Brisbane
Tolling Point ID	Image was captured by one of the cameras located on the gantries at <ul style="list-style-type: none"> the TP02A tolling point

AUTOMATIC NUMBER PLATE RECOGNITION (ANPR) CAMERA SYSTEM CODING MANUAL

	<ul style="list-style-type: none">• Location = Bowen Hills• Direction = North/Eastbound from Campbell Street/Clem7/Bowen Bridge Road (BBR) or Inner City Bypass (ICB) from City to Airport Link tunnel
ANPR Camera and Gantry	This image was produced by the camera at the relevant Tolling Gantry as per the camera coding section in this manual
Date image was produced	Date of image capture in YYYY-MMM-DD format
Time image was produced	Time of image capture to the microsecond
Time Zone	Australian Eastern Standard Time

AUTOMATIC NUMBER PLATE RECOGNITION (ANPR) CAMERA SYSTEM CODING MANUAL

1.2 Legacy Way Tunnel



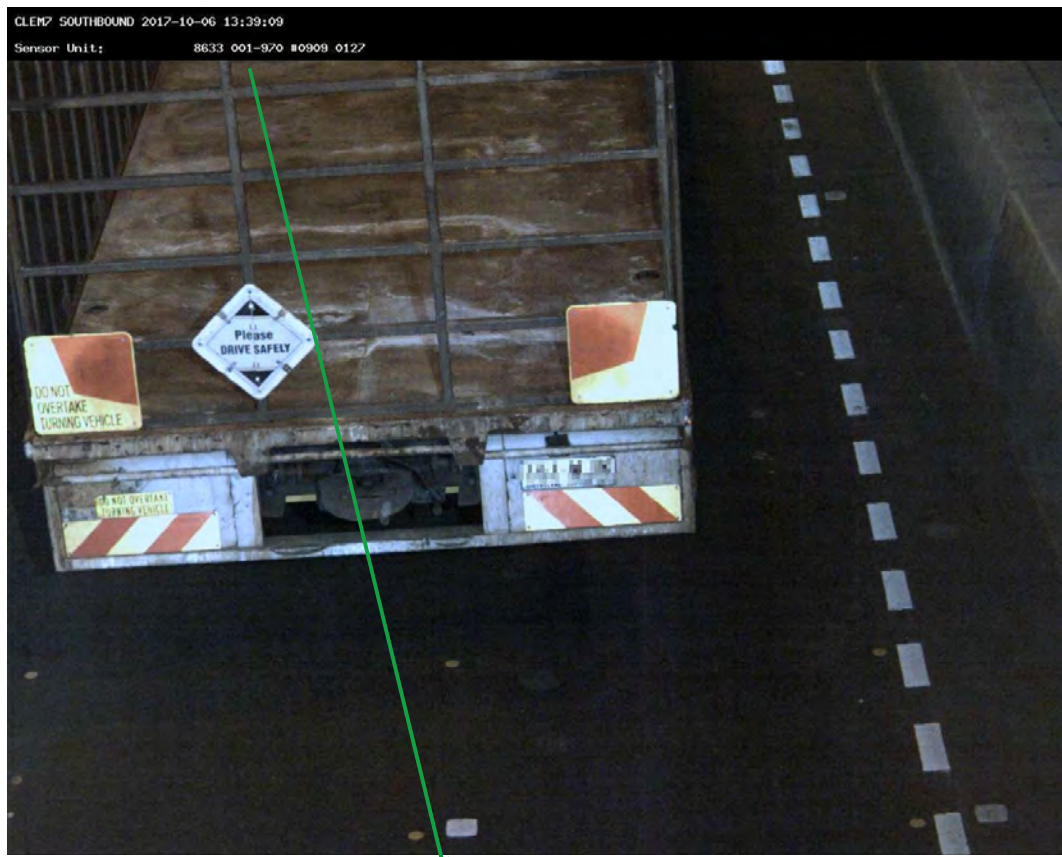
Location: Legacy Way Direction: East Date and Time: 2017-10-18 06:21:36
 Sensor Unit: 8633 003-272 13118996

Data Block Example	Legacy Way	East	2017-10-18 06:32:36	8633 003-272	13118996
Text field/Parameter Meaning	Location	Direction	Date and Time	Sensor Unit Part Number	Serial Number of Sensor Unit

Text field/Parameter Meaning	Explanation
Location	Image was taken for vehicle travelling through Legacy Way Tunnel
Direction	Direction of travel within the Legacy Way Tunnel.
Date and Time	Date of image capture in YYYY-MM-DD HH24:MI:SS format
Sensor Unit Part Number	Sensor Unit Part Number of device capturing image.
Serial Number of Sensor Unit	Sensor Unit Serial Number of device capturing image.

AUTOMATIC NUMBER PLATE RECOGNITION (ANPR) CAMERA SYSTEM CODING MANUAL

1.3 Clem Jones Tunnel



Data Block Example	CLEM7	SOUTHBOUND	2017-10-06	13:39:09	8633 001-970	#0909 0127
Text field/Parameter Meaning	Location	Direction	Date	Time	Sensor Unit Part Number	Serial Number of Sensor unit

Text field/Parameter Meaning	Explanation
Location	Image was taken for vehicle travelling through Clem Jones Tunnel (also known as Clem7)
Direction	Direction of travel within the Clem7 Tunnel.

AUTOMATIC NUMBER PLATE RECOGNITION (ANPR) CAMERA SYSTEM CODING MANUAL

Date	Date of image capture in YYYY-MM-DD format
Time	Time of image capture in HH24:MI:SS format
Sensor Unit Part Number	Sensor Unit Part Number of device capturing image.
Serial Number of Sensor Unit	Sensor Unit Serial Number of device capturing image.

AUTOMATIC NUMBER PLATE RECOGNITION (ANPR) CAMERA SYSTEM CODING MANUAL

2. Glossary

Term/Acronym	Description
Camera	Collective term for roadside equipment such as a Colour Scene Imaging Unit, License Plate Imaging Unit or Vehicle Detection and Classification
Data block	Black strip text overlaid in the image (above the actual image). This will contain information specific to the image to which the black strip is appended to. An example of a Data block and further description of field meanings can be found later in this document