

Queensland Road Crash Weekly Report

Report No: 1043e

Data Extracted: 11 Jul 2018

Fatalities: 1 January to 31 December 2017

Table 1: Comparative Queensland Road Toll

	2012	2013	2014	2015	2016	2017	Variation in 2017 from 2016		Variation in 2017 from the 2012 to 2016 Avg	
							no.	%	no.*	%
Total fatal crashes	255	246	199	219	238	228	-10	-4.2%	-3	-1.5%
Total fatalities	280	271	223	243	251	247	-4	-1.6%	-7	-2.6%
Driver fatalities	124	136	105	117	105	101	-4	-3.8%	-16	-14.0%
Passenger fatalities	59	56	53	47	39	52	13	33.3%	1	2.4%
Motorcycle/Moped rider and pillion fatalities	60	45	37	54	62	50	-12	-19.4%	-2	-3.1%
Bicycle rider and pillion fatalities	10	13	9	4	8	8	0	0.0%	-1	-9.1%
Pedestrian fatalities	27	21	19	21	37	35	-2	-5.4%	10	40.0%
Other fatalities [^]	0	0	0	0	0	1	1	-	1	-
Fatalities involving heavy freight vehicles ^{^^}	73	53	41	49	40	33	-7	-17.5%	-18	-35.5%

Note:

Figures are preliminary.

* Figures are rounded to the nearest whole number.

[^] Includes other fatalities such as horse riders and train drivers and passengers.

^{^^} Includes all fatalities as a result of crashes involving heavy freight vehicles. These figures are also included in the road user type breakdown above (e.g. drivers, passengers, etc).

During 1 January to 31 December 2017, there were 247 fatalities as a result of crashes within Queensland, which is four fatalities (or 1.6%) fewer than the previous year and seven fatalities (or 2.6%) fewer than the previous five year average (Table 1).

Figure 1: Cumulative Daily Road Toll, Queensland

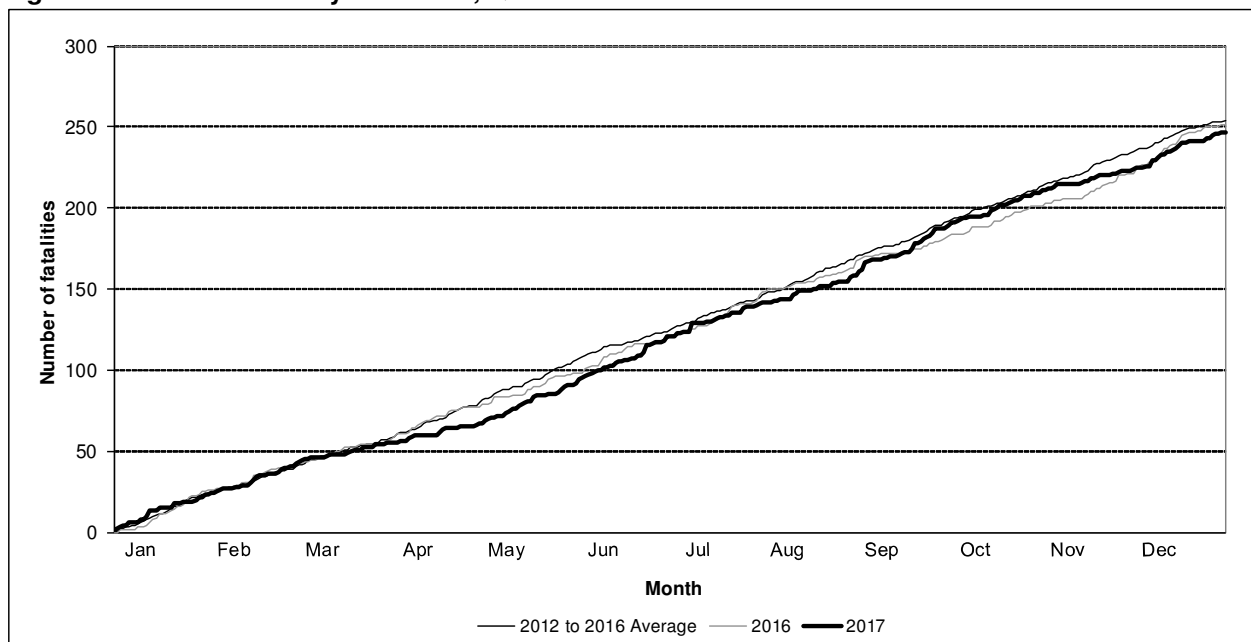


Table 2: Fatalities by Police Region

Police Region	2012	2013	2014	2015	2016	2017	Variation in 2017 from 2016		Variation in 2017 from the 2012 to 2016 Avg	
							no.	%	no.*	%
							Northern	44	35	35
Central	109	95	71	68	79	76	-3	-3.8%	-8	-10.0%
Southern	56	77	66	66	69	54	-15	-21.7%	-13	-19.2%
South Eastern	45	35	24	30	24	38	14	58.3%	6	20.3%
Brisbane	26	29	27	31	39	36	-3	-7.7%	6	18.4%

Note:

Figures are preliminary.

Where Police Region was known.

* Figures are rounded to the nearest whole number.

Table 3: Fatalities by TMR Customer Services Branch Region

Transport and Main Roads Customer Services Branch Region	2012	2013	2014	2015	2016	2017	Variation in 2017 from 2016		Variation in 2017 from the 2012 to 2016 Avg	
							no.	%	no.*	%
							Central	50	56	30
Northern	43	33	35	47	40	43	3	7.5%	3	8.6%
SEQ North	57	55	37	52	48	59	11	22.9%	9	18.5%
SEQ South	71	66	52	59	66	63	-3	-4.5%	0	0.3%
Southern	59	61	69	49	66	47	-19	-28.8%	-14	-22.7%

Note:

Figures are preliminary.

Where CSB Region was known.

* Figures are rounded to the nearest whole number.

Table 4: Fatalities by TMR Program Delivery and Operations Region

Transport and Main Roads Program Delivery and Operations Region	2012	2013	2014	2015	2016	2017	Variation in 2017 from 2016		Variation in 2017 from the 2012 to 2016 Avg	
							no.	%	no.*	%
							North Queensland	43	33	35
Central Queensland	50	56	30	36	31	35	4	12.9%	-6	-13.8%
North Coast and Wide Bay/Burnett	83	71	62	65	77	78	1	1.3%	6	8.9%
Downs South West	26	48	43	30	31	18	-13	-41.9%	-18	-49.4%
Metropolitan	31	25	27	33	41	35	-6	-14.6%	4	11.5%
South Coast	47	38	26	32	31	38	7	22.6%	3	9.2%

Note

Figures are preliminary.

Where PDO Region was known.

* Figures are rounded to the nearest whole number.

Fatalities: 1 January 2012 to 31 December 2017

Table 5: Fatalities by characteristic

Behaviour / Characteristic: Fatalities as a result of crashes 1 January 2012 to 31 December 2017	2012	2013	2014	2015	2016	2017		Variation in 2017 from 2016		Variation in 2017 from the 2012 to 2016 Avg	
	no.	no.	no.	no.	no.	no.	%	no.	%	no.*	%
All fatalities	280	271	223	243	251	247	-	-4	-1.6%	-7	-2.6%
Involving speeding drivers/riders	59	47	65	62	64	52	21.1%	-12	-18.8%	-7	-12.5%
Involving drink drivers/riders	45	64	43	57	46	63	25.5%	17	37.0%	12	23.5%
Fatigue related crashes (involving drivers/riders)	48	41	31	28	33	23	9.3%	-10	-30.3%	-13	-36.5%
Involving young adult drivers/riders, aged 16 to 24 years	84	70	55	53	61	73	29.6%	12	19.7%	8	13.0%
Involving young adult drivers/riders, aged 16 years	8	1	0	0	1	1	0.4%	0	0.0%	-1	-50.0%
Involving young adult drivers/riders, aged 17 to 20 years	52	39	31	29	20	28	11.3%	8	40.0%	-6	-18.1%
Involving young adult drivers/riders, aged 21 to 24 years	32	30	25	25	42	46	18.6%	4	9.5%	15	49.4%
Involving senior adult drivers/riders, aged 60 to 74 years	54	41	35	36	47	58	23.5%	11	23.4%	15	36.2%
Involving senior adult drivers/riders, aged 75 years or over	17	25	11	31	26	24	9.7%	-2	-7.7%	2	9.1%
Involving learner drivers/riders	22	11	2	3	4	9	3.6%	5	125.0%	1	7.1%
Involving provisional/P1/P2 drivers/riders	47	35	25	28	37	30	12.1%	-7	-18.9%	-4	-12.8%
Involving unlicensed drivers/riders	31	22	31	30	24	20	8.1%	-4	-16.7%	-8	-27.5%
Involving heavy freight vehicles	73	53	41	49	40	33	13.4%	-7	-17.5%	-18	-35.5%
Involving motorcycles (excluding mopeds)	59	42	37	54	64	50	20.2%	-14	-21.9%	-1	-2.3%
Involving mopeds	1	3	0	0	0	1	0.4%	1	-	0	25.0%
Involving buses	7	6	1	2	3	10	4.0%	7	233.3%	6	163.2%
Child road user fatalities, aged 16 years or younger [^]	15	24	13	8	8	6	2.4%	-2	-25.0%	-8	-55.9%
Young adult road user fatalities, aged 17 to 24 years [^]	60	51	42	39	45	47	19.0%	2	4.4%	0	-0.8%
Mature adult road user fatalities, aged 25 to 59 years [^]	146	139	119	135	132	126	51.0%	-6	-4.5%	-8	-6.1%
Senior adult road user fatalities, aged 60 to 74 years [^]	35	30	35	26	29	33	13.4%	4	13.8%	2	6.5%
Senior adult road user fatalities, aged 75 years or over [^]	24	27	14	35	37	35	14.2%	-2	-5.4%	8	27.7%
Vehicle occupant fatalities	183	192	158	164	144	153	-	9	6.3%	-15	-9.0%
Vehicle occupant fatalities, where restraint use was known	110	122	102	128	117	125	-	8	6.8%	9	7.9%
Unrestrained vehicle occupant fatalities [#]	23	35	36	35	18	32	25.6%	-	66.4% [#]	-	0.8% [#]

Note:

Figures are preliminary.

* Figures are rounded to the nearest whole number.

[^] Where age was known.

[#] Restraint use is not applicable for all road user types (i.e. pedestrians, motorcycle riders/pillions, etc) and is not always known. Therefore the variation in unrestrained vehicle occupant casualties is measured as a change in the percentage of all vehicle occupant casualties, instead of the change in number, where restraint use was known.

Fatalities per 100,000 population: 12 months to 31 December 2017

Table 6: Fatalities per 100,000 population, by state

State	January to December 2016			January to December 2017			Percentage difference in rate with previous 12 month period
	Fatalities	Population ('000) as at Jun 2016	Fatalities per 100,000 population	Fatalities	Population ('000) as at Jun 2017	Fatalities per 100,000 population	
Queensland	251	4,845.2	5.18	247	4,929.2	5.01	-3.3%
New South Wales	380	7,732.9	4.91	392	7,861.7	4.99	1.5%
Victoria	290	6,173.2	4.70	258	6,321.6	4.08	-13.1%
South Australia	86	1,712.8	5.02	100	1,723.7	5.80	15.5%
Western Australia	196	2,556.0	7.67	161	2,575.5	6.25	-18.5%
Tasmania	36	517.5	6.96	34	522.2	6.51	-6.4%
Northern Territory	45	245.7	18.32	31	247.5	12.53	-31.6%
Australian Capital Territory	11	403.1	2.73	5	411.7	1.21	-55.5%
Rest of Australia	1,044	19,345.8	5.40	981	19,668.4	4.99	-7.6%
Australian Total	1,295	24,190.9	5.35	1,228	24,597.5	4.99	-6.7%

Data source:

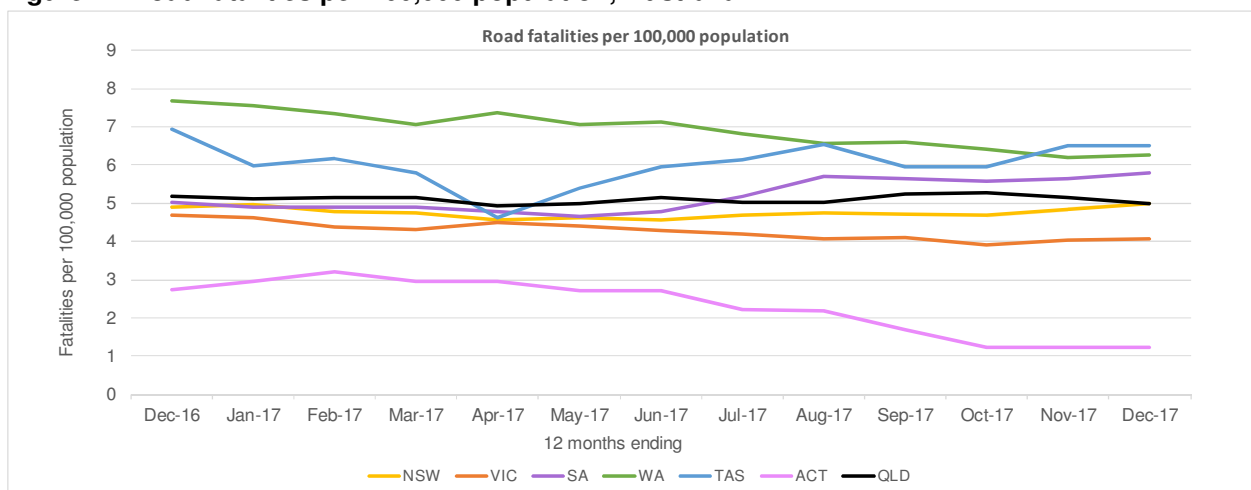
Population: Australian Bureau of Statistics - Catalog 3101.0

Interstate fatalities: Relevant State Authority

Note:

Figures are preliminary

Figure 2: Road fatalities per 100,000 population, Australia



For the 12 month period, 1 January to 31 December 2017:

- There were 247 fatalities within Queensland, which is four fatalities (or 1.6%) fewer than the previous 12 month period (251).
- The road fatality rate for Queensland was 5.01 fatalities per 100,000 population which is 3.3% lower than the previous 12 month period (5.18) and is fourth behind the Australian Capital Territory (1.21), Victoria (4.08) and New South Wales (4.99).
- There were 1,228 fatalities within Australia, which is 67 fatalities (or 5.2%) fewer than the previous 12 month period (1,295).
- The road fatality rate for Australia was 4.99 fatalities per 100,000 population which is 6.7% lower than the previous 12 month period (5.35).

Hospitalised Casualties: 1 January to 31 December 2017

Table 7: Comparative Queensland Hospitalised Casualties

	2012	2013	2014	2015	2016	2017	Variation in 2017 from 2016		Variation in 2017 from the 2012 to 2016 Avg	
							no.	%	no.*	%
Total hospitalisation crashes	5,356	5,690	5,411	5,038	5,181	5,261	80	1.5%	-74	-1.4%
Total hospitalised casualties	6,553	6,936	6,621	6,175	6,313	6,459	146	2.3%	-61	-0.9%
Driver hospitalised casualties	3,608	3,878	3,639	3,344	3,450	3,534	84	2.4%	-50	-1.4%
Passenger hospitalised casualties	1,278	1,337	1,275	1,170	1,168	1,213	45	3.9%	-33	-2.6%
Motorcycle/Moped rider and pillion hospitalised casualties	935	976	981	985	969	952	-17	-1.8%	-17	-1.8%
Bicycle rider and pillion hospitalised casualties	351	362	347	307	323	390	67	20.7%	52	15.4%
Pedestrian hospitalised casualties	379	381	355	352	389	358	-31	-8.0%	-13	-3.6%
Other hospitalised casualties [^]	2	2	24	17	14	12	-2	-14.3%	0	1.7%
Hospitalised casualties involving heavy freight vehicles ^{^^}	459	514	448	414	416	443	27	6.5%	-7	-1.6%

Note:

Figures are preliminary.

* Figures are rounded to the nearest whole number.

[^] Includes other hospitalised casualties such as horse riders and train drivers and passengers.

^{^^} Includes all hospitalised casualties as a result of crashes involving heavy freight vehicles. These figures are also included in the road user type breakdown above (e.g. drivers, passengers, etc).

During 1 January to 31 December 2017, there were 6,459 hospitalised casualties as a result of crashes within Queensland, which is 146 hospitalised casualties (or 2.3%) greater than the previous year and 61 hospitalised casualties (or 0.9%) fewer than the previous five year average (Table 7).

Figure 3: Cumulative Daily Hospitalised Casualties, Queensland

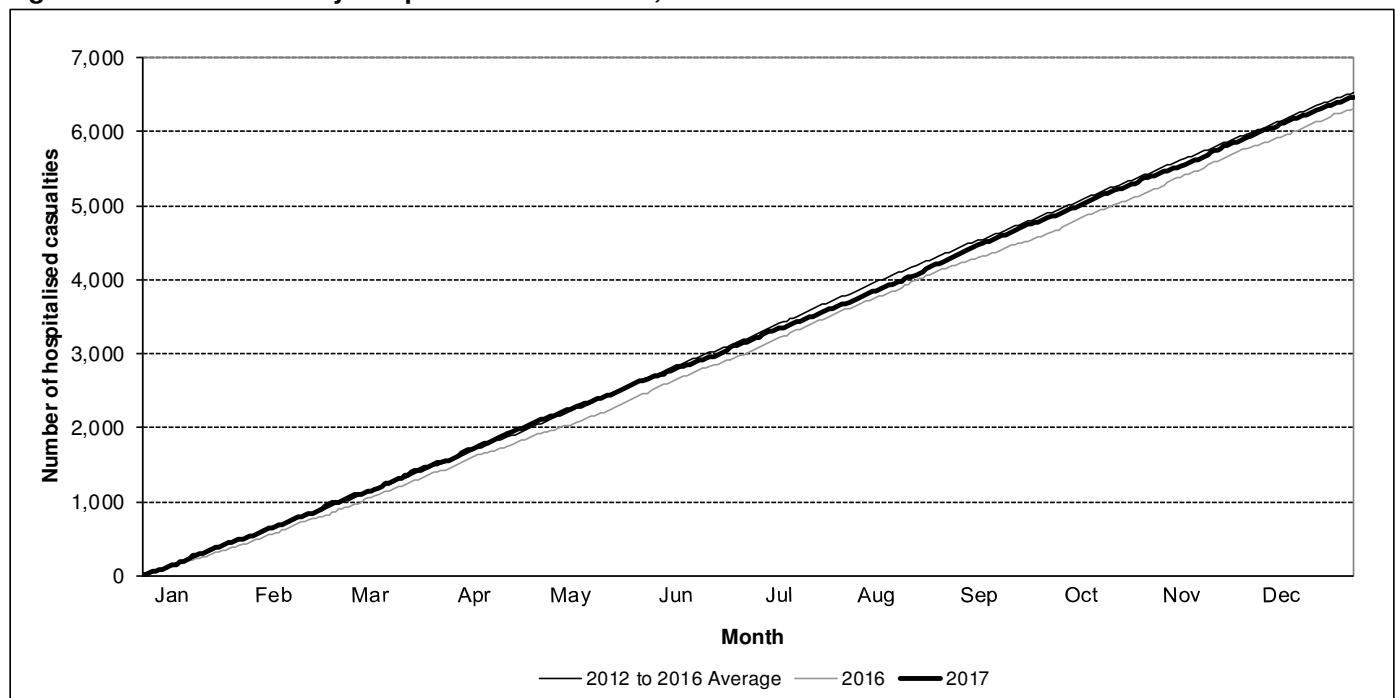


Table 8: Hospitalised Casualties by Police Region

Police Region	2012	2013	2014	2015	2016	2017	Variation in 2017 from 2016		Variation in 2017 from the 2012 to 2016 Avg	
							no.	%	no.*	%
							Northern	867	908	921
Central	1,552	1,701	1,570	1,402	1,565	1,473	-92	-5.9%	-85	-5.5%
Southern	1,297	1,246	1,305	1,242	1,159	1,234	75	6.5%	-16	-1.3%
South Eastern	1,046	1,128	1,098	1,074	1,127	1,232	105	9.3%	137	12.6%
Brisbane	1,776	1,936	1,723	1,621	1,658	1,638	-20	-1.2%	-105	-6.0%

Note:

Figures are preliminary.

Where Police Region was known.

* Figures are rounded to the nearest whole number.

Table 9: Hospitalised Casualties by TMR Customer Services Branch Region

Transport and Main Roads Customer Services Branch Region	2012	2013	2014	2015	2016	2017	Variation in 2017 from 2016		Variation in 2017 from the 2012 to 2016 Avg	
							no.	%	no.*	%
							Central	819	890	752
Northern	857	900	917	831	803	875	72	9.0%	13	1.6%
SEQ North	1,761	1,819	1,805	1,544	1,620	1,555	-65	-4.0%	-155	-9.1%
SEQ South	2,180	2,370	2,219	2,239	2,275	2,424	149	6.5%	167	7.4%
Southern	921	940	924	924	881	881	0	0.0%	-37	-4.0%

Note:

Figures are preliminary.

Where CSB Region was known.

* Figures are rounded to the nearest whole number.

Table 10: Hospitalised Casualties by TMR Program Delivery and Operations Region

Transport and Main Roads Program Delivery and Operations Region	2012	2013	2014	2015	2016	2017	Variation in 2017 from 2016		Variation in 2017 from the 2012 to 2016 Avg	
							no.	%	no.*	%
							North Queensland	857	900	917
Central Queensland	819	890	752	636	734	723	-11	-1.5%	-43	-5.6%
North Coast and Wide Bay/Burnett	1,457	1,552	1,615	1,407	1,471	1,436	-35	-2.4%	-64	-4.3%
Downs South West	521	496	495	501	456	448	-8	-1.8%	-46	-9.3%
Metropolitan	1,819	1,943	1,726	1,709	1,697	1,706	9	0.5%	-73	-4.1%
South Coast	1,065	1,138	1,112	1,090	1,152	1,270	118	10.2%	159	14.3%

Note:

Figures are preliminary.

Where PDO Region was known.

* Figures are rounded to the nearest whole number.

Hospitalised Casualties: 1 January 2012 to 31 December 2017

Table 11: Hospitalised Casualties by Characteristic

Behaviour / Characteristic: Hospitalised casualties as a result of crashes 1 January 2012 to 31 December 2017	2012	2013	2014	2015	2016	2017		Variation in 2017 from 2016		Variation in 2017 from the 2012 to 2016 Avg	
	no.	no.	no.	no.	no.	no.	%	no.	%	no.*	%
All hospitalised casualties	6,553	6,936	6,621	6,175	6,313	6,459	-	146	2.3%	-61	-0.9%
Involving speeding drivers/riders	344	295	322	302	267	292	4.5%	25	9.4%	-14	-4.6%
Involving drink drivers/riders	586	576	552	477	513	634	9.8%	121	23.6%	93	17.2%
Fatigue related crashes (involving drivers/riders)	522	478	544	447	440	401	6.2%	-39	-8.9%	-85	-17.5%
Involving young adult drivers/riders, aged 16 to 24 years	2,233	2,366	2,186	1,966	2,080	2,081	32.2%	1	0.0%	-85	-3.9%
Involving young adult drivers/riders, aged 16 years	52	52	35	43	50	53	0.8%	3	6.0%	7	14.2%
Involving young adult drivers/riders, aged 17 to 20 years	1,216	1,271	1,147	1,068	1,114	1,043	16.1%	-71	-6.4%	-120	-10.3%
Involving young adult drivers/riders, aged 21 to 24 years	1,082	1,134	1,128	941	1,019	1,070	16.6%	51	5.0%	9	0.9%
Involving senior adult drivers/riders, aged 60 to 74 years	1,117	1,180	1,171	1,128	1,150	1,196	18.5%	46	4.0%	47	4.1%
Involving senior adult drivers/riders, aged 75 years or over	374	407	376	390	419	435	6.7%	16	3.8%	42	10.6%
Involving learner drivers/riders	279	230	175	180	184	209	3.2%	25	13.6%	-1	-0.3%
Involving provisional/P1/P2 drivers/riders	1,257	1,392	1,188	1,191	1,217	1,202	18.6%	-15	-1.2%	-47	-3.8%
Involving unlicensed drivers/riders	449	408	672	479	444	440	6.8%	-4	-0.9%	-50	-10.3%
Involving heavy freight vehicles	459	514	448	414	416	443	6.9%	27	6.5%	-7	-1.6%
Involving motorcycles (excluding mopeds)	890	931	931	964	966	924	14.3%	-42	-4.3%	-12	-1.3%
Involving mopeds	65	80	79	42	46	61	0.9%	15	32.6%	-1	-2.2%
Involving buses	129	130	148	122	116	121	1.9%	5	4.3%	-8	-6.2%
Child road user hospitalised casualties, aged 16 years or younger [^]	421	468	465	483	431	478	7.4%	47	10.9%	24	5.4%
Young adult road user hospitalised casualties, aged 17 to 24 years [^]	1,576	1,647	1,553	1,336	1,402	1,400	21.7%	-2	-0.1%	-103	-6.8%
Mature adult road user hospitalised casualties, aged 25 to 59 years [^]	3,546	3,762	3,574	3,347	3,435	3,491	54.2%	56	1.6%	-42	-1.2%
Senior adult road user hospitalised casualties, aged 60 to 74 years [^]	700	738	717	684	720	742	11.5%	22	3.1%	30	4.2%
Senior adult road user hospitalised casualties, aged 75 years or over [^]	295	304	296	308	309	330	5.1%	21	6.8%	28	9.1%
Vehicle occupant hospitalised casualties	4,886	5,215	4,914	4,514	4,618	4,747	-	129	2.8%	-82	-1.7%
Vehicle occupant hospitalised casualties, where restraint use was known	3,866	4,074	4,036	3,800	3,793	3,905	-	112	3.0%	-9	-0.2%
Unrestrained vehicle occupant hospitalised casualties [#]	170	155	166	152	178	182	4.7%	-	-0.7%#	-	11.1%#

Note:

Figures are preliminary.

* Figures are rounded to the nearest whole number.

[^] Where age was known.

[#] Restraint use is not applicable for all road user types (i.e. pedestrians, motorcycle riders/pillion, etc) and is not always known. Therefore the variation in unrestrained vehicle occupant casualties is measured as a change in the percentage of all vehicle occupant casualties, instead of the change in number, where restraint use was known.