

Priority Route Maps

Downs South West

Addendum to Principal Cycle Network Plan



Contents

1	Introduction	3
2	Priority Route Maps	4
	Goondiwindi Regional Council	4
	Goondiwindi (Map 1)	4
	Lockyer Valley Regional Council	5
	Gatton (Map 2)	5
	Laidley (Map 3)	6
	Maranoa Regional Council	7
	Roma (Map 4)	7
	Southern Downs Regional Council	8
	Stanthorpe (Map 5)	8
	Warwick (Map 6)	9
	Toowoomba Regional Council	10
	Oakey (Map 7)	10
	Pittsworth (Map 8)	11
	Toowoomba (Maps 9–10)	12
	Western Downs Regional Council	14
	Chinchilla (Map 11)	14
	Dalby (Map 12)	15
	Miles (Map 13)	16

Creative Commons information

© State of Queensland (Department of Transport and Main Roads) 2017



<http://creativecommons.org/licenses/by/4.0/>

This work is licensed under a Creative Commons Attribution 4.0 Licence. You are free to copy, communicate and adapt the work, as long as you attribute the authors.



The Queensland Government supports and encourages the dissemination and exchange of information. However, copyright protects this publication. The State of Queensland has no objection to this material being reproduced, made available online or electronically but only if its recognised as the owner of the copyright and this material remains unaltered.

The Queensland Government is committed to providing accessible services to Queenslanders of all cultural and linguistic backgrounds. If you have difficulty understanding this publication and need a translator, please call the Translating and Interpreting Service (TIS National) on 13 14 50 and ask them to telephone the Queensland Department of Transport and Main Roads on 13 74 68.

Disclaimer: While every care has been taken in preparing this publication, the State of Queensland accepts no responsibility for decisions or actions taken as a result of any data, information, statement or advice, expressed or implied, contained within. To the best of our knowledge, the content was correct at the time of publishing.

1 Introduction

The Priority Route Maps are an addendum to the Downs South West Principal Cycle Network Plan (the plan). The plan provides a vision for the principal cycle network to support, guide, and inform practitioners involved in the planning, design, and construction of the transport network. Principal routes are indicative and guide further planning and design to determine the precise route and design of cycle facilities. The Priority Route Maps identify the delivery priority that state and local government have assigned to principal routes in each local government area.

1.1 *Role of Priority Route Maps*

The Priority Route Maps guide state and local government planning, design, and investment to deliver the principal cycle network. The maps assist agencies to identify and use a range of mechanisms to deliver the network such as state and local government capital works programs, and road resealing and other maintenance programs. The maps also guide assessment of Queensland Government Cycle Network Local Government Grants program applications.

1.2 *How were priority routes identified?*

Principal cycle network routes were identified as Priority A (focus of delivery in the next 10 years), Priority B (10 to 15 years), Priority C (15 to 20 years), or Priority D (for delivery in the next 20 years or more). The priority given to each route was informed by workshops and consultation with local government and the Department of Transport and Main Roads regional officers, based on criteria focused on supporting trips to work, school, shops, and other major attractors. Consultation with cycling and other stakeholders will occur as part of future detailed investigations of the priority routes.

Prioritisation considered safety, topography, land use, current usage, and local knowledge of current or latent demand, planning, feasibility, and opportunities. A number of routes are shown as unprioritised. They are either already constructed or not considered a priority for investment at this stage. However, facilities may be delivered on unprioritised routes as part of other projects.

1.3 *Endorsement and review*

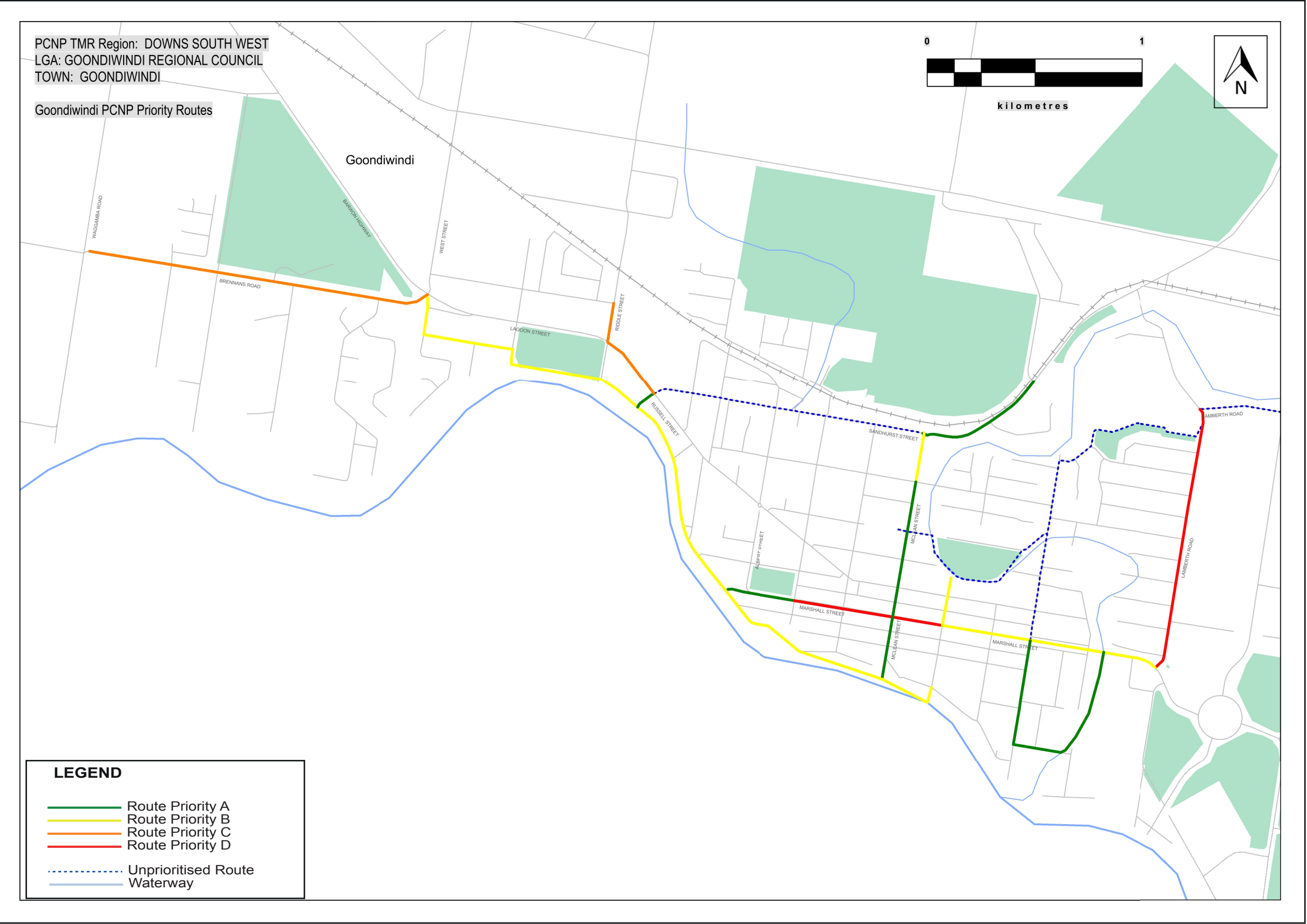
The Priority Route Maps have been endorsed by the department and all local governments covered by the plan.

The maps will be regularly reviewed to track delivery and respond to changing circumstances such as changes in demand, priority, and funding availability.

2 Priority Route Maps

This section presents the Priority Route Maps by local government area.

Goondiwindi Regional Council – Goondiwindi



Priority Route Map 1

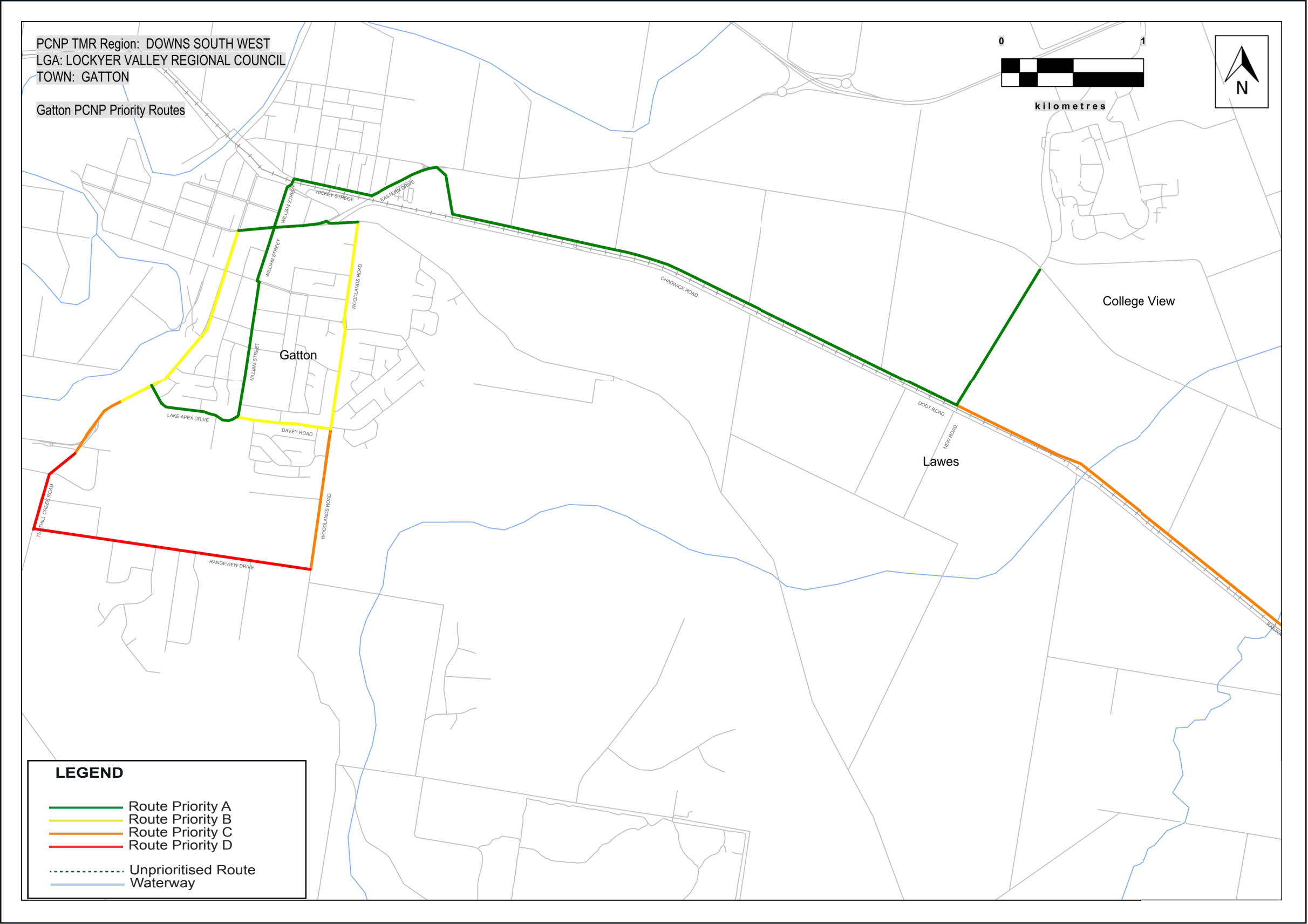
Downs South West Principal Cycle Network

The routes shown are indicative and exist to guide further planning that will determine the precise routes and design of cycle facilities.

Disclaimer: While every care is taken to ensure the accuracy of this data, Transport and Main Roads and/or the State Government makes no representation or warranties about its accuracy, reliability, completeness or suitability for any particular purpose and disclaims all responsibility and all liability (including without limitation, liability in negligence) for all expenses, losses, damages (including indirect or consequential damage) and costs which you might incur as a result of the data being inaccurate or incomplete in any way and for any reason.



Lockyer Valley Regional Council – Gatton



Priority Route Map 2

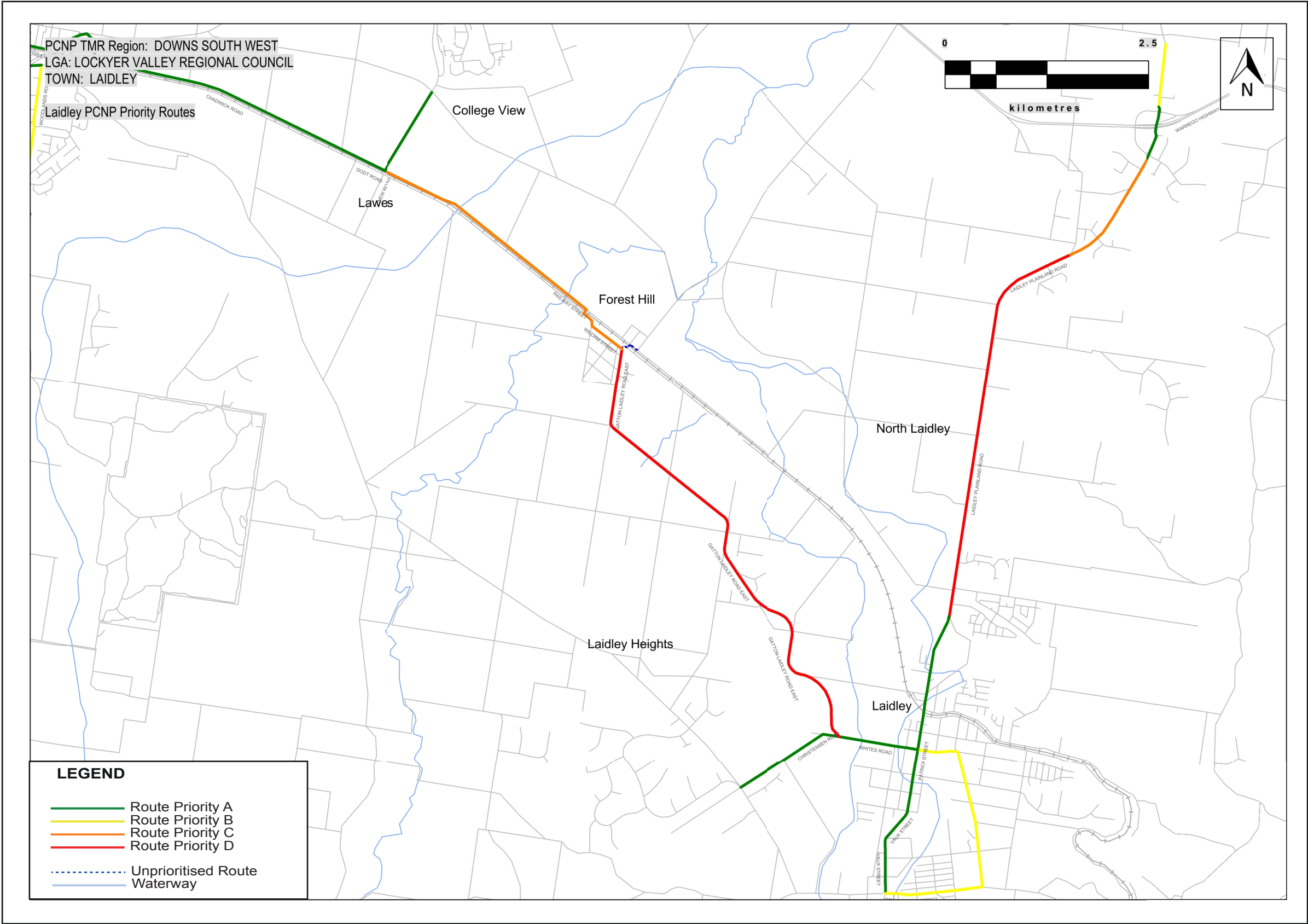
Downs South West Principal Cycle Network

The routes shown are indicative and exist to guide further planning that will determine the precise routes and design of cycle facilities.

Disclaimer: While every care is taken to ensure the accuracy of this data, Transport and Main Roads and/or the State Government makes no representation or warranties about its accuracy, reliability, completeness or suitability for any particular purpose and disclaims all responsibility and all liability (including without limitation, liability in negligence) for all expenses, losses, damages (including indirect or consequential damage) and costs which you might incur as a result of the data being inaccurate or incomplete in any way and for any reason.



Lockyer Valley Regional Council – Laidley



Priority Route Map 3

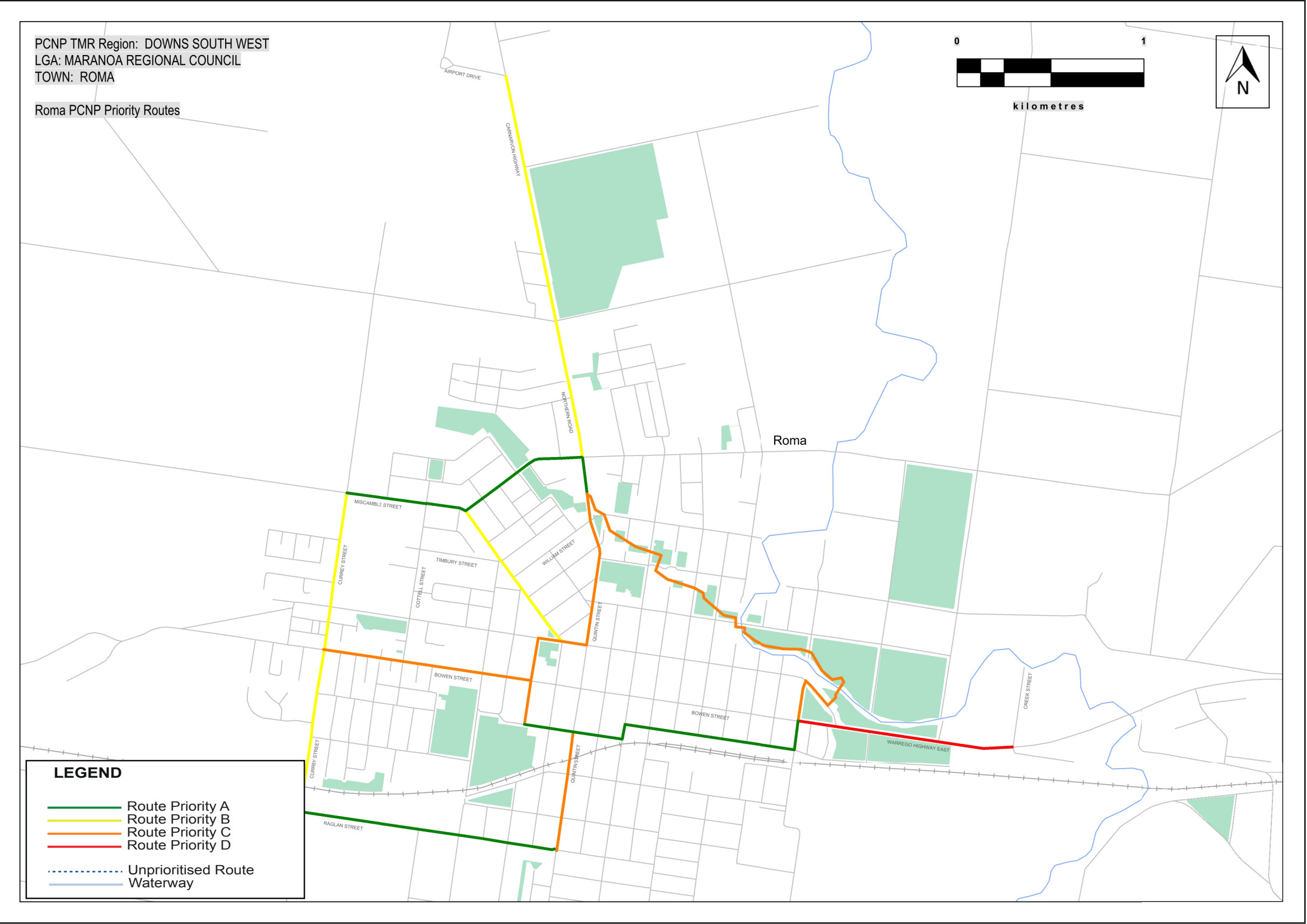
Mackay Isaac Whitsunday Principal Cycle Network

The routes shown are indicative and exist to guide further planning that will determine the precise routes and design of cycle facilities.

Disclaimer: While every care is taken to ensure the accuracy of this data, Transport and Main Roads and/or the State Government makes no representation or warranties about its accuracy, reliability, completeness or suitability for any particular purpose and disclaims all responsibility and all liability (including without limitation, liability in negligence) for all expenses, losses, damages (including indirect or consequential damage) and costs which you might incur as a result of the data being inaccurate or incomplete in any way and for any reason.



Maranoa Regional Council – Roma



Priority Route Map 4

Downs South West Principal Cycle Network

The routes shown are indicative and exist to guide further planning that will determine the precise routes and design of cycle facilities.

Disclaimer: While every care is taken to ensure the accuracy of this data, Transport and Main Roads and/or the State Government makes no representation or warranties about its accuracy, reliability, completeness or suitability for any particular purpose and disclaims all responsibility and all liability (including without limitation, liability in negligence) for all expenses, losses, damages (including indirect or consequential damage) and costs which you might incur as a result of the data being inaccurate or incomplete in any way and for any reason.



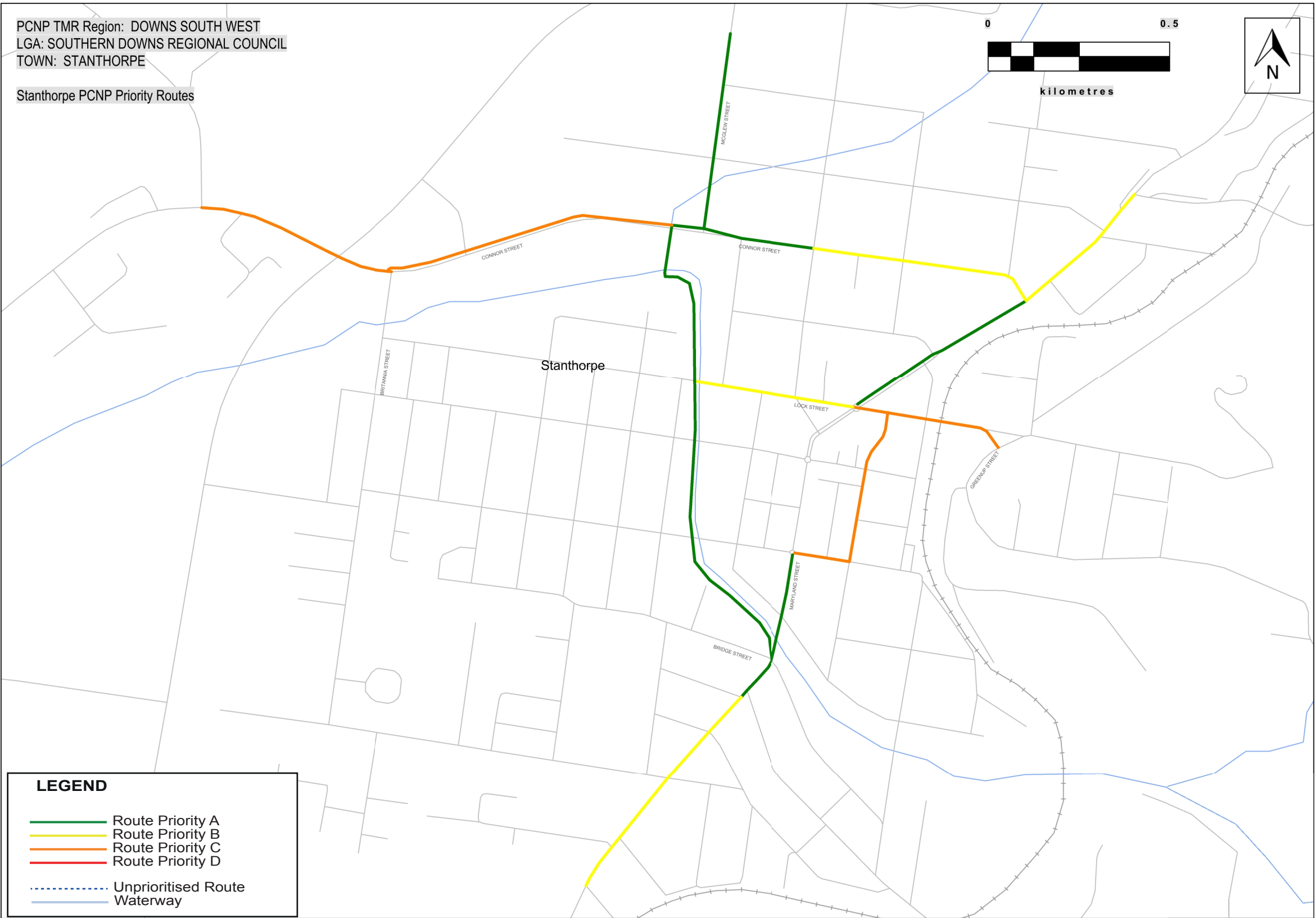
Southern Downs Regional Council – Stanthorpe

Priority Route Map 5

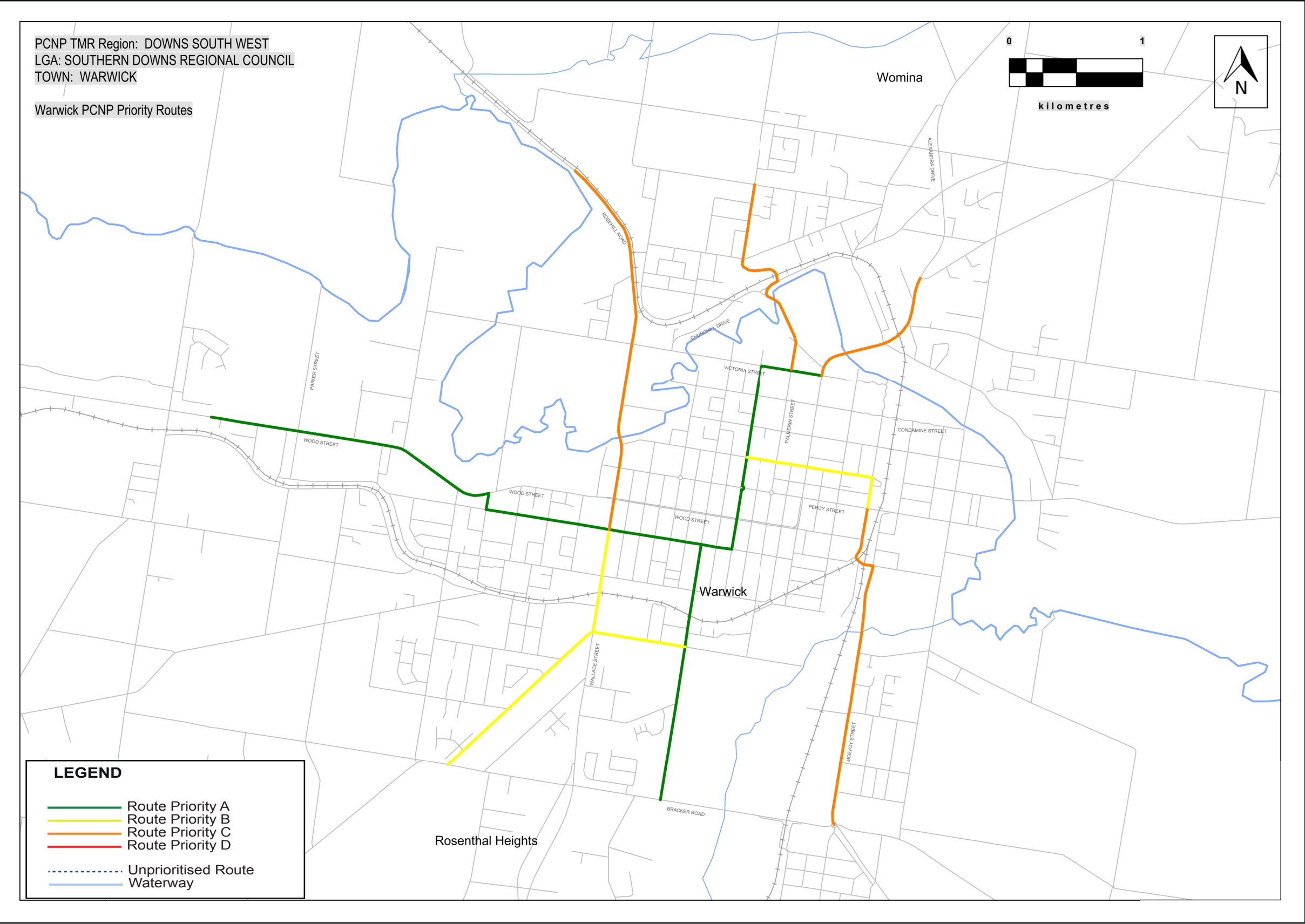
Downs South West Principal Cycle Network

The routes shown are indicative and exist to guide further planning that will determine the precise routes and design of cycle facilities.

Disclaimer: While every care is taken to ensure the accuracy of this data, Transport and Main Roads and/or the State Government makes no representation or warranties about its accuracy, reliability, completeness or suitability for any particular purpose and disclaims all responsibility and all liability (including without limitation, liability in negligence) for all expenses, losses, damages (including indirect or consequential damage) and costs which you might incur as a result of the data being inaccurate or incomplete in any way and for any reason.



Southern Downs Regional Council – Warwick



Priority Route Map 6

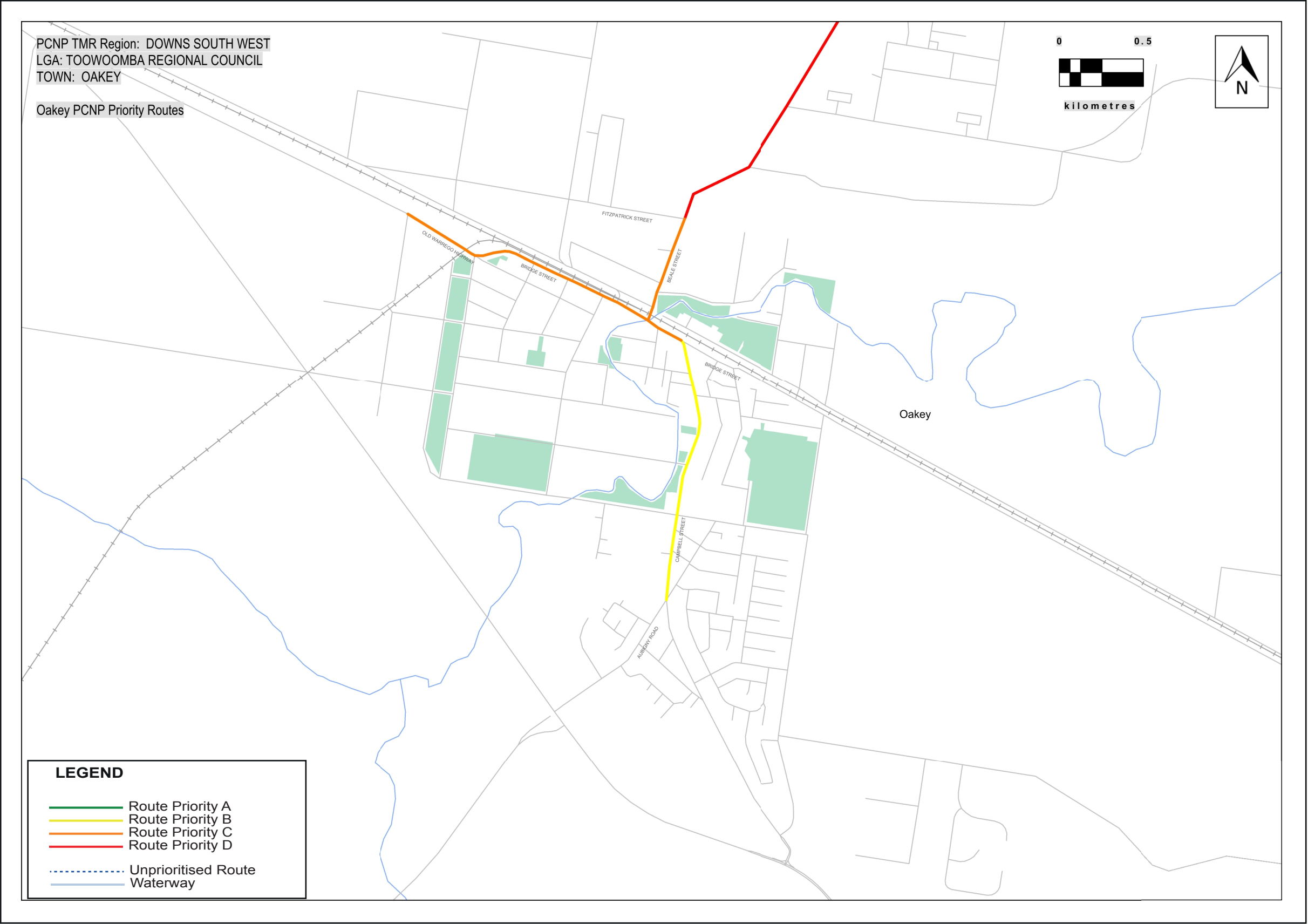
Downs South West Principal Cycle Network

The routes shown are indicative and exist to guide further planning that will determine the precise routes and design of cycle facilities.

Disclaimer: While every care is taken to ensure the accuracy of this data, Transport and Main Roads and/or the State Government makes no representation or warranties about its accuracy, reliability, completeness or suitability for any particular purpose and disclaims all responsibility and all liability (including without limitation, liability in negligence) for all expenses, losses, damages (including indirect or consequential damage) and costs which you might incur as a result of the data being inaccurate or incomplete in any way and for any reason.



Toowoomba Regional Council – Oakey



Priority Route Map 7

Downs South West Principal Cycle Network

The routes shown are indicative and exist to guide further planning that will determine the precise routes and design of cycle facilities.

Disclaimer: While every care is taken to ensure the accuracy of this data, Transport and Main Roads and/or the State Government makes no representation or warranties about its accuracy, reliability, completeness or suitability for any particular purpose and disclaims all responsibility and all liability (including without limitation, liability in negligence) for all expenses, losses, damages (including indirect or consequential damage) and costs which you might incur as a result of the data being inaccurate or incomplete in any way and for any reason.



Toowoomba Regional Council – Pittsworth

Priority Route Map 8

Downs South West Principal Cycle Network

The routes shown are indicative and exist to guide further planning that will determine the precise routes and design of cycle facilities.

Disclaimer: While every care is taken to ensure the accuracy of this data, Transport and Main Roads and/or the State Government makes no representation or warranties about its accuracy, reliability, completeness or suitability for any particular purpose and disclaims all responsibility and all liability (including without limitation, liability in negligence) for all expenses, losses, damages (including indirect or consequential damage) and costs which you might incur as a result of the data being inaccurate or incomplete in any way and for any reason.



Toowoomba Regional Council – Toowoomba North

Priority Route Map 9

Downs South West Principal Cycle Network

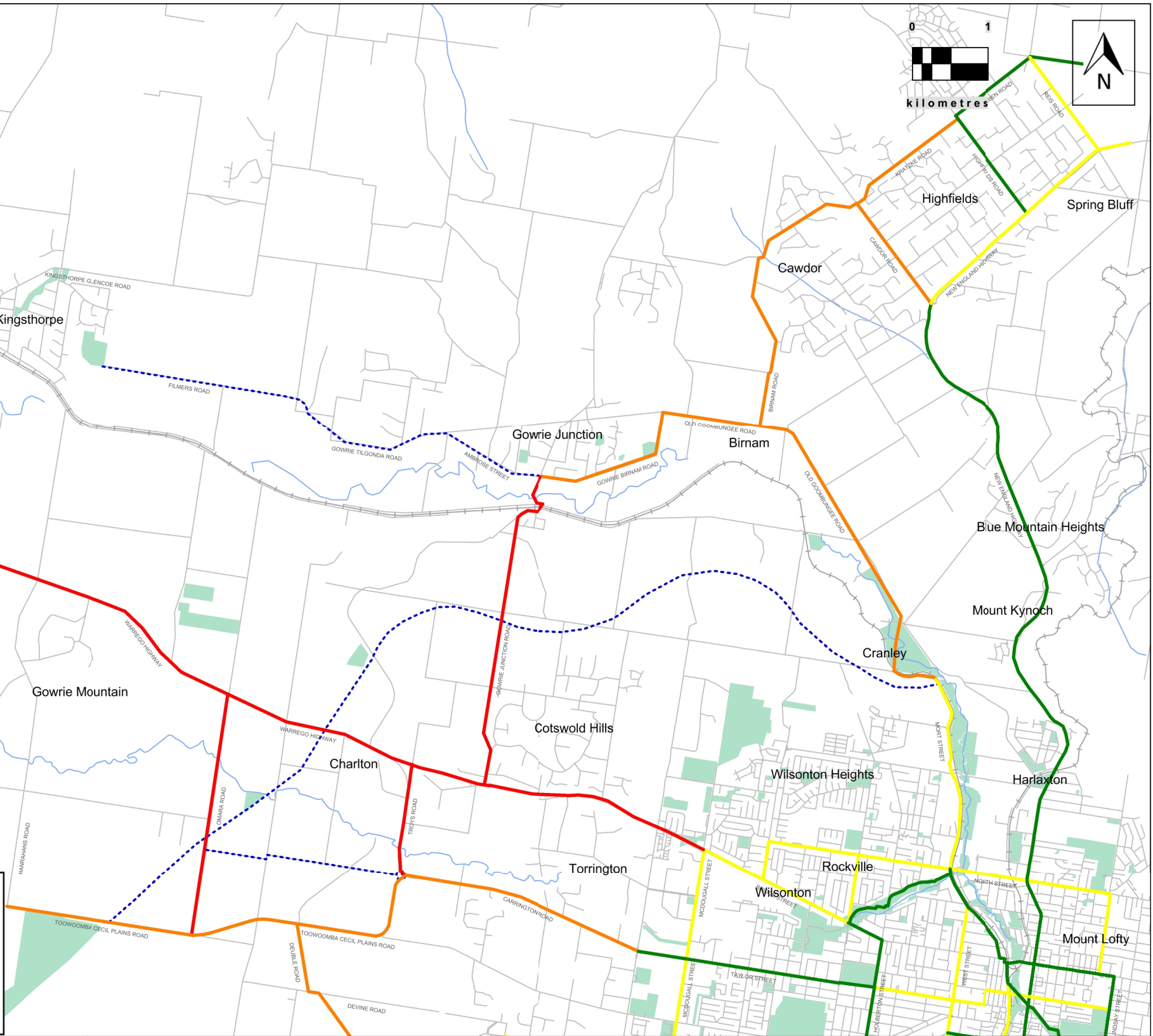
The routes shown are indicative and exist to guide further planning that will determine the precise routes and design of cycle facilities.

Disclaimer: While every care is taken to ensure the accuracy of this data, Transport and Main Roads and/or the State Government makes no representation or warranties about its accuracy, reliability, completeness or suitability for any particular purpose and disclaims all responsibility and all liability (including without limitation, liability in negligence) for all expenses, losses, damages (including indirect or consequential damage) and costs which you might incur as a result of the data being inaccurate or incomplete in any way and for any reason.

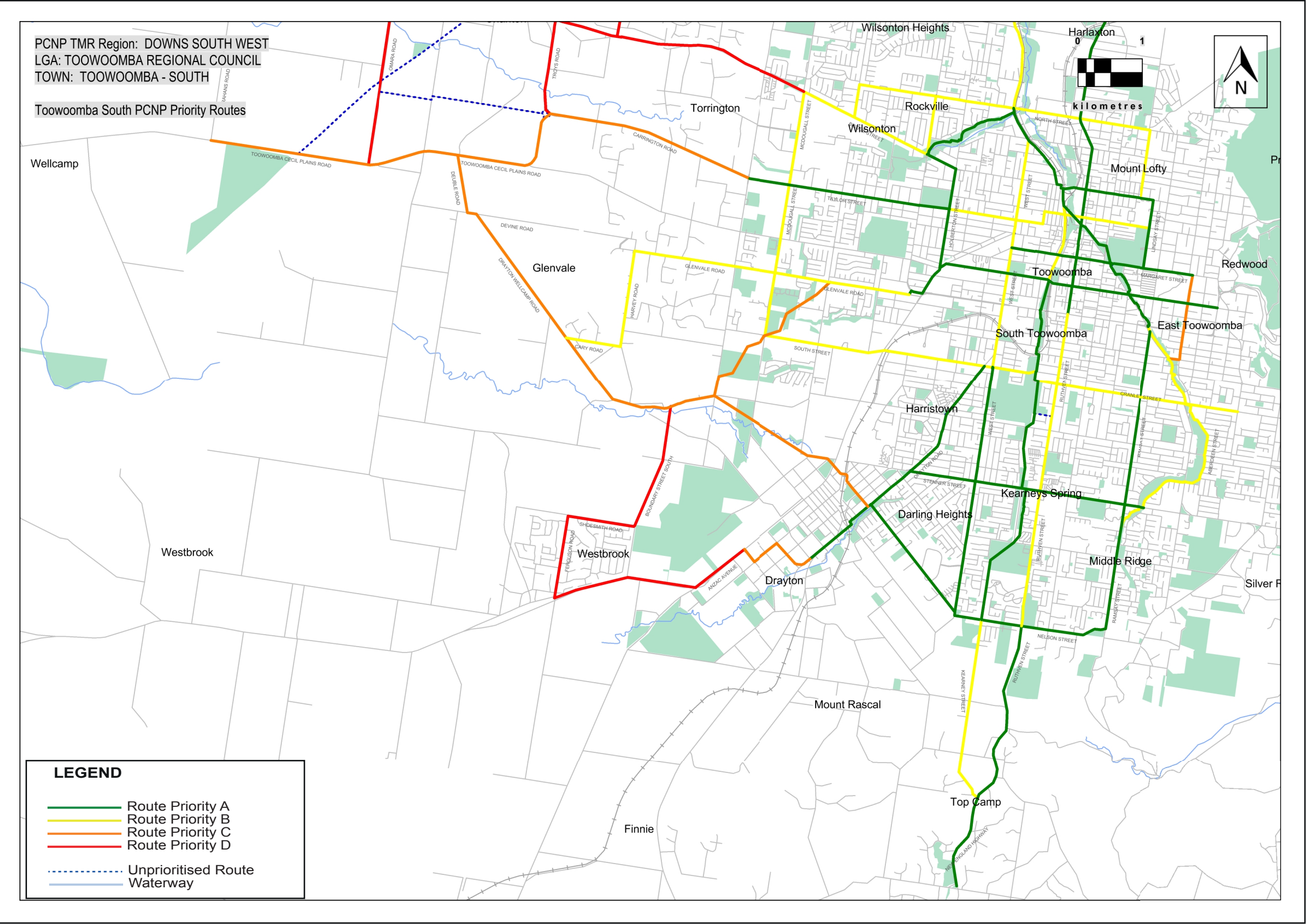
PCNP TMR Region: DOWNS SOUTH WEST
LGA: TOOWOOMBA REGIONAL COUNCIL
TOWN: TOOWOOMBA - NORTH

Toowoomba North PCNP Priority Routes

- LEGEND**
- Route Priority A
 - Route Priority B
 - Route Priority C
 - Route Priority D
 - Unprioritised Route
 - Waterway



Toowoomba Regional Council – Toowoomba South



Priority Route Map 10

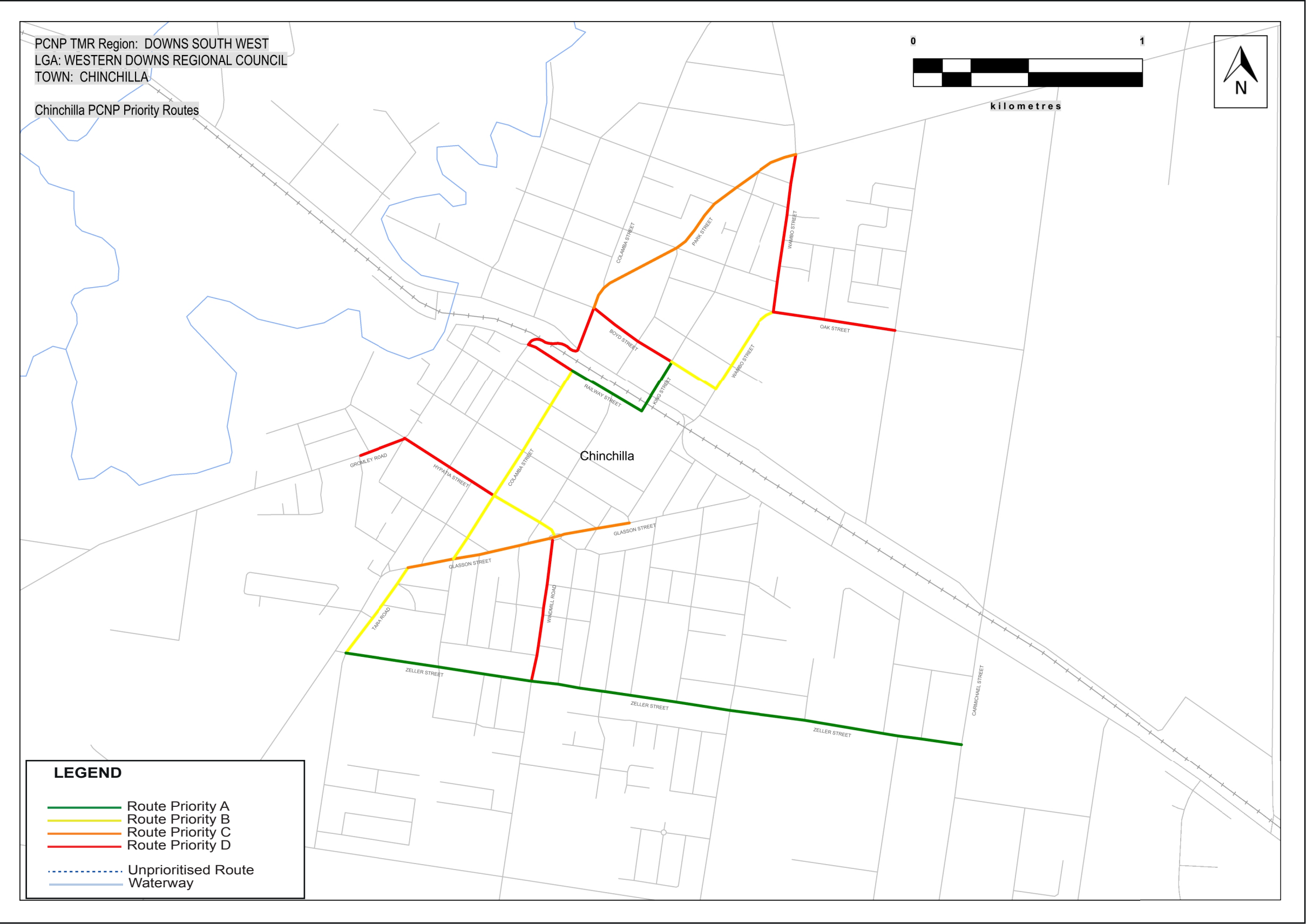
Downs South West Principal Cycle Network

The routes shown are indicative and exist to guide further planning that will determine the precise routes and design of cycle facilities.

Disclaimer: While every care is taken to ensure the accuracy of this data, Transport and Main Roads and/or the State Government makes no representation or warranties about its accuracy, reliability, completeness or suitability for any particular purpose and disclaims all responsibility and all liability (including without limitation, liability in negligence) for all expenses, losses, damages (including indirect or consequential damage) and costs which you might incur as a result of the data being inaccurate or incomplete in any way and for any reason.



Western Downs Regional Council – Chinchilla



Priority Route Map 11

Downs South West Principal Cycle Network

The routes shown are indicative and exist to guide further planning that will determine the precise routes and design of cycle facilities.

Disclaimer: While every care is taken to ensure the accuracy of this data, Transport and Main Roads and/or the State Government makes no representation or warranties about its accuracy, reliability, completeness or suitability for any particular purpose and disclaims all responsibility and all liability (including without limitation, liability in negligence) for all expenses, losses, damages (including indirect or consequential damage) and costs which you might incur as a result of the data being inaccurate or incomplete in any way and for any reason.



Western Downs Regional Council – Dalby

Priority Route Map 12

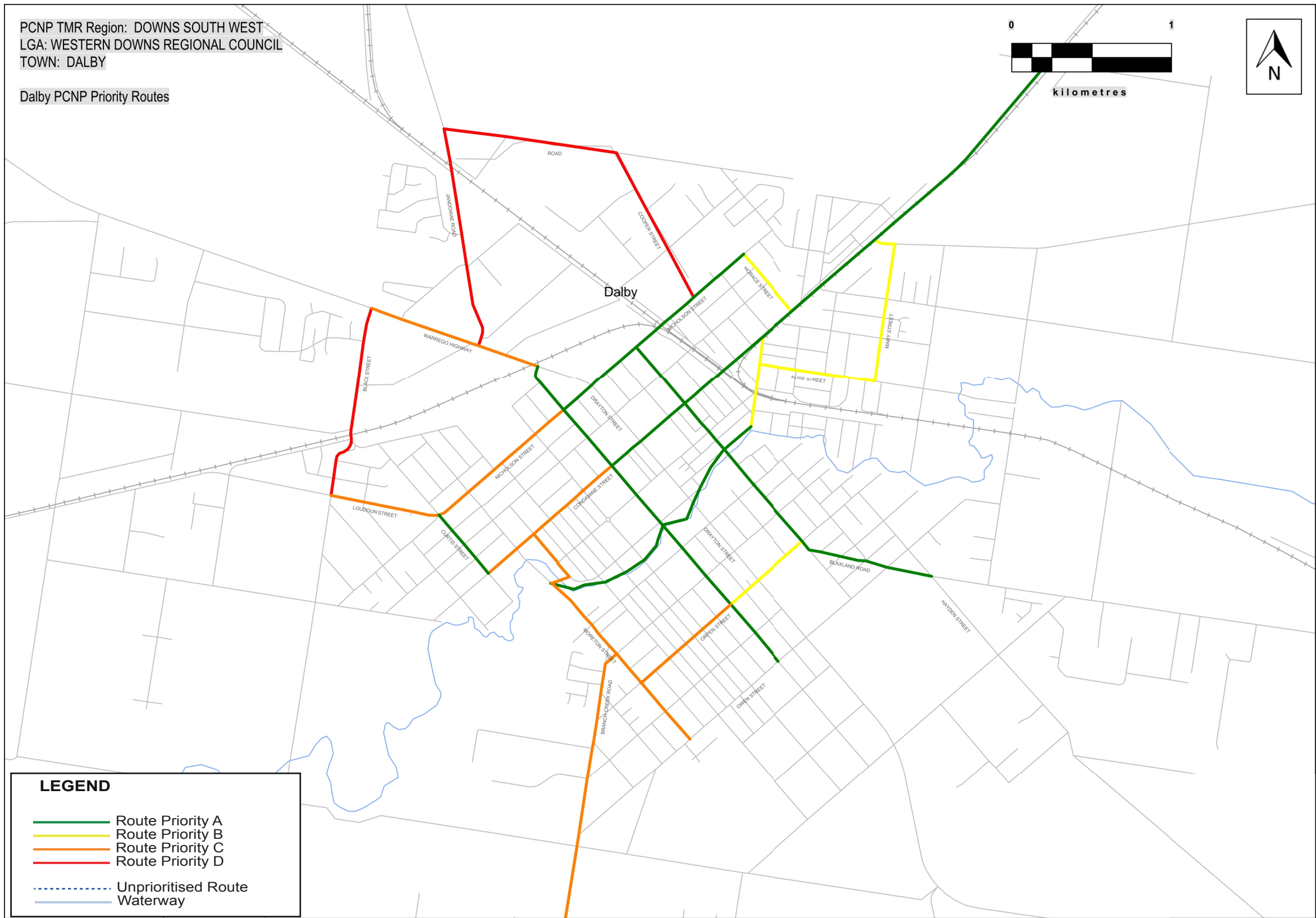
Downs South West Principal Cycle Network

The routes shown are indicative and exist to guide further planning that will determine the precise routes and design of cycle facilities.

Disclaimer: While every care is taken to ensure the accuracy of this data, Transport and Main Roads and/or the State Government makes no representation or warranties about its accuracy, reliability, completeness or suitability for any particular purpose and disclaims all responsibility and all liability (including without limitation, liability in negligence) for all expenses, losses, damages (including indirect or consequential damage) and costs which you might incur as a result of the data being inaccurate or incomplete in any way and for any reason.

PCNP TMR Region: DOWNS SOUTH WEST
LGA: WESTERN DOWNS REGIONAL COUNCIL
TOWN: DALBY

Dalby PCNP Priority Routes

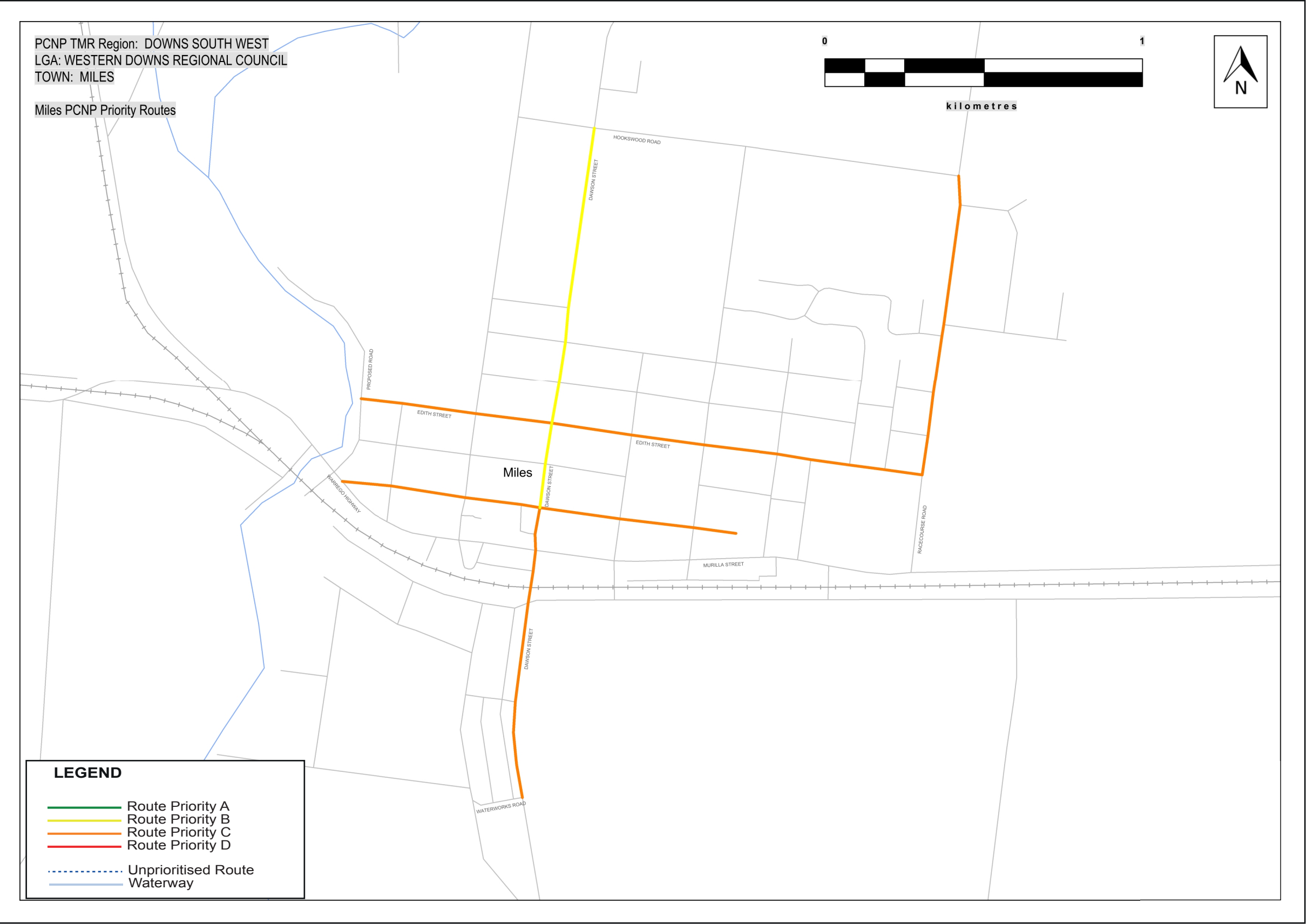


LEGEND

- Route Priority A
- Route Priority B
- Route Priority C
- Route Priority D
- Unprioritised Route
- Waterway



Western Downs Regional Council – Miles



Priority Route Map 13

Downs South West Principal Cycle Network

The routes shown are indicative and exist to guide further planning that will determine the precise routes and design of cycle facilities.

Disclaimer: While every care is taken to ensure the accuracy of this data, Transport and Main Roads and/or the State Government makes no representation or warranties about its accuracy, reliability, completeness or suitability for any particular purpose and disclaims all responsibility and all liability (including without limitation, liability in negligence) for all expenses, losses, damages (including indirect or consequential damage) and costs which you might incur as a result of the data being inaccurate or incomplete in any way and for any reason.



