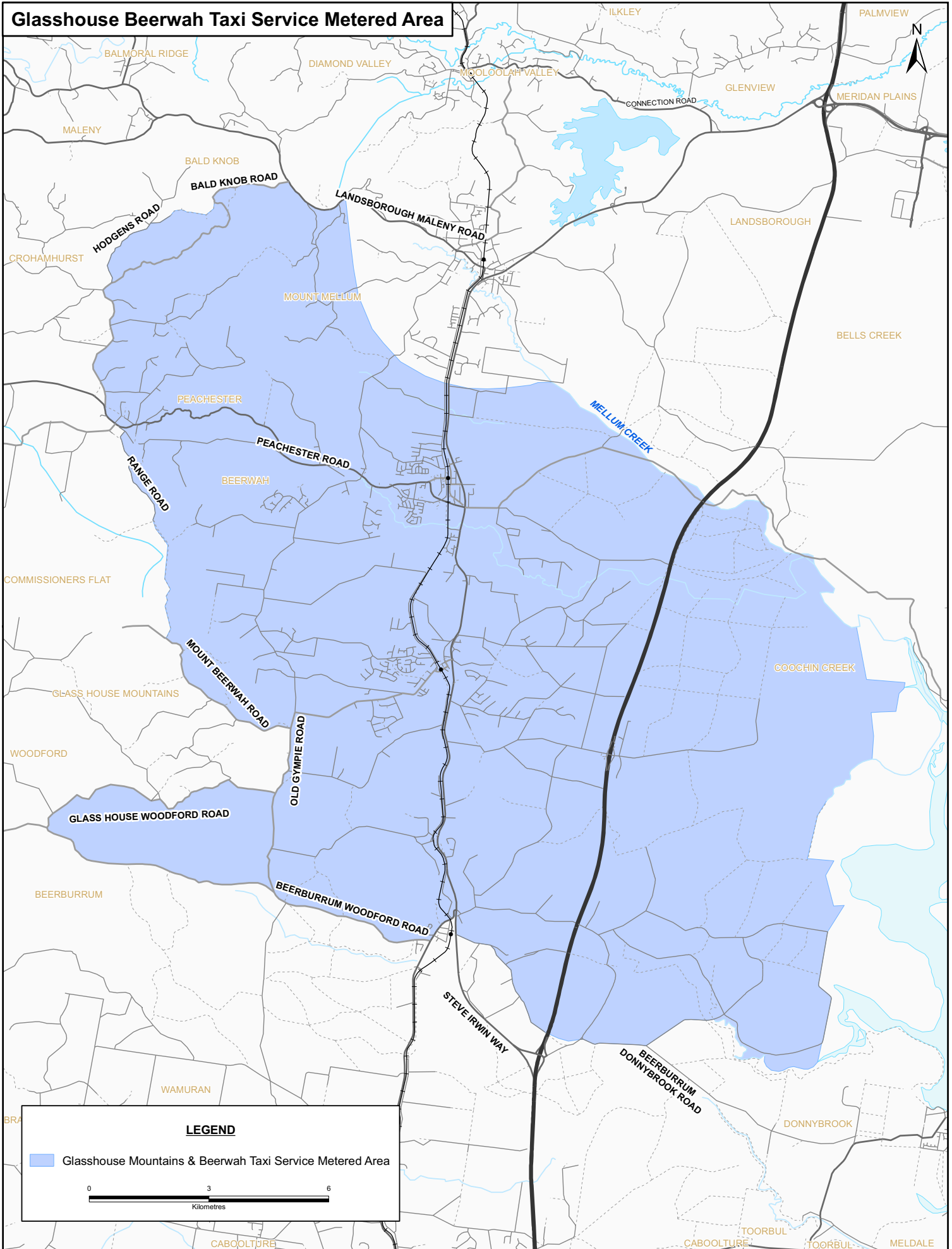


Glasshouse Beerwah Taxi Service Metered Area



While every care is taken to ensure the accuracy of this data no representations or warranties about its accuracy, reliability, completeness or suitability for any particular purpose and disclaims all responsibility and all liability (including without limitation, liability in negligence) for all expenses, losses, damages, (including indirect or subsequent damage) and costs which you might incur as a result of the data being inaccurate or incomplete in any way or for any reason. Data must not be used for direct marketing or be used in breach of privacy laws. Information is for display purposes only and no responsibility is taken for data accuracy. State Digital Road Network (SDRN) provided with permission of MapInfo Australia Pty Ltd (2011). State Digital Cadastre Database (DCDB) provided with permission of Department of Environment and Resource Management (2011).

Produced by:
Technology and Innovation Unit
Passenger Transport Division
Department of Transport and Main Roads
email: ptgishelp@tmr.qld.gov.au



DATE	JOB No	DMS No	INITIAL	REV
27/06/11	-	-	DBJ	A