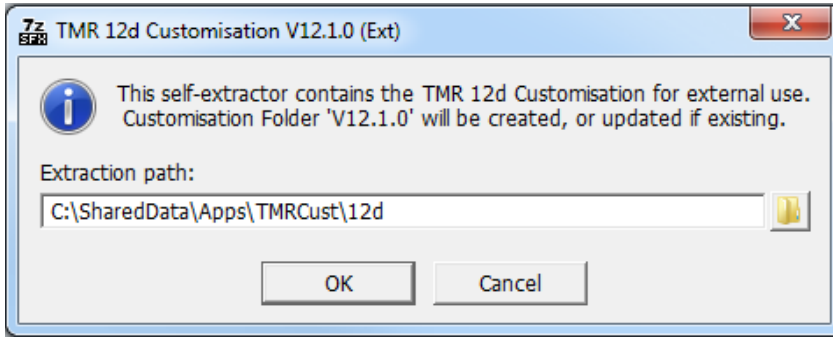


## Configuring the TMR 12d Customisation V12



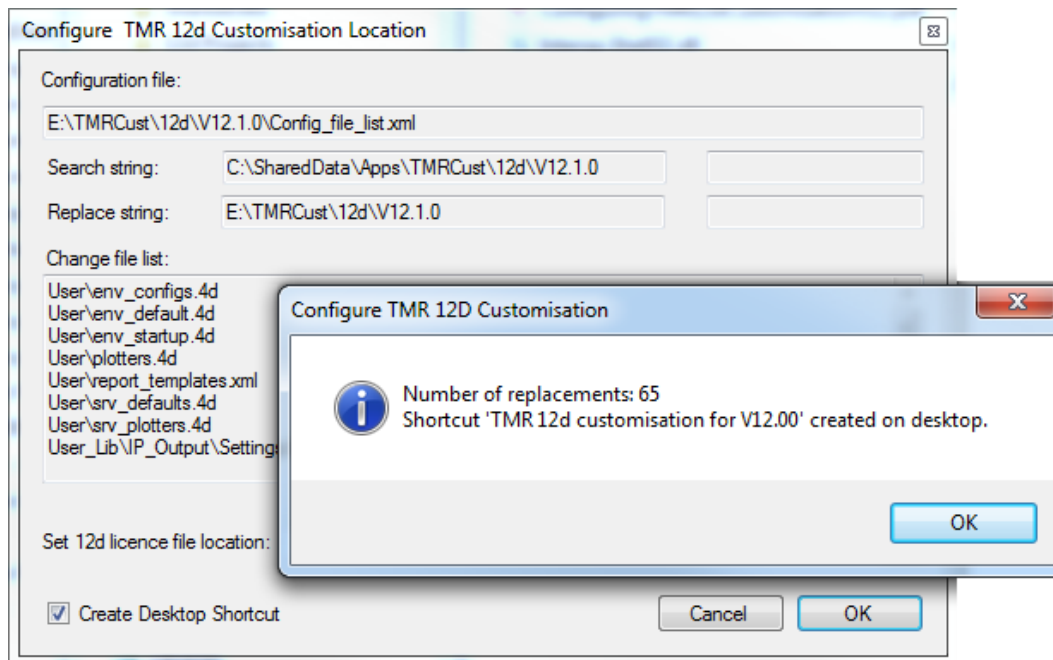
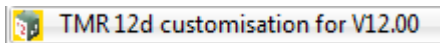
The customisation content is packaged as a self-extracting zip (TMR 12d Customisation V12.1.0\_Ext.exe). The default extract path is 'C:\SharedData\Apps\TMRcust\12d\'

The zip file contains the TMR 12d Customisation starting at the folder 'V12.1.0'

If a different extract path is used for the customisation then there are several files in the customisation that contain paths that will need modifying. You can use the program 'TMR\_Configure\_12d.exe' to perform this operation.

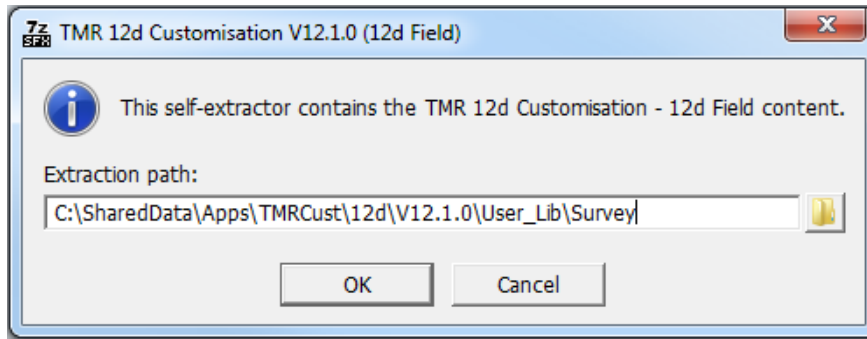
Run '...\V12.1.0\TMR\_Configure\_12d.exe' to perform the following actions as required:

- Perform a search and replace on selected files to reflect the extraction path if different from the default.
- Update the environment variable AUTHORIZATION\_4D in 'User\env\_default' to set the location to your 12d licence file.
- Create a shortcut on the desktop to launch 12d Model V12 against the TMR 12d Customisation.



---

Optional download and install of 12d Field Customisation content.



The Extraction Path should be the 'Survey' folder within the Customisation.