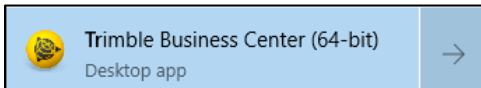


# Trimble Business Center v5.40

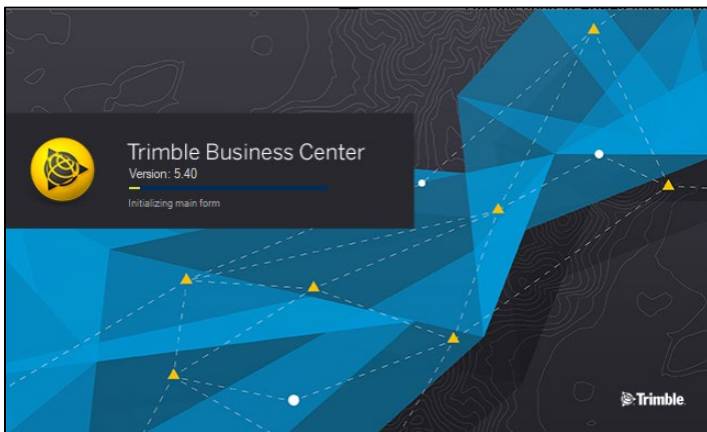
## Post Installation Instructions

The following outlines the steps that need to be undertaken once Trimble Business Center is installed on your computer.

### 1. Open Trimble Business Center

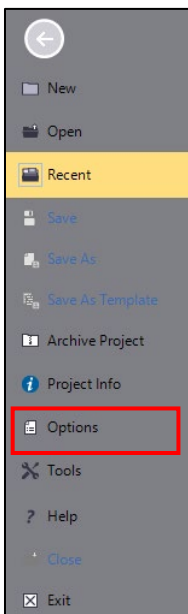


It may take a little while for the database to initialise.



### 2. If you are prompted for old configurations select No.

### 3. Select File → Options



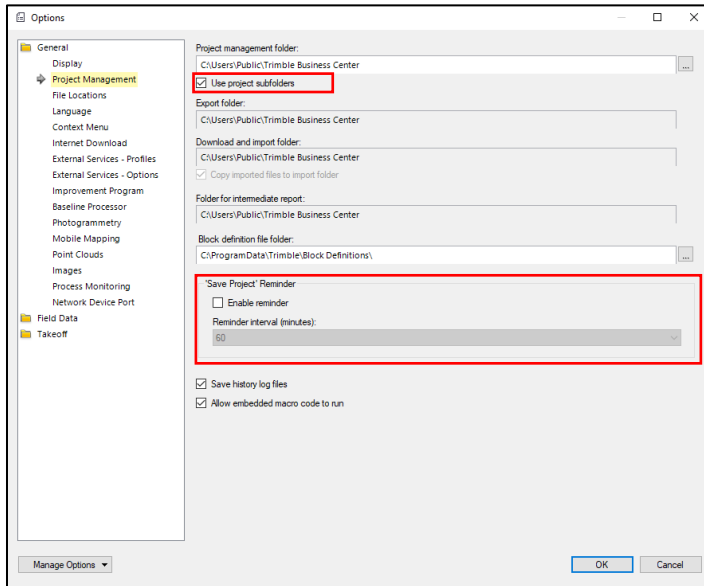
#### 4. Select **Project Management**

- You will need to update your folders to match those shown below.

You will need to **untick** the box *Use project subfolders* to edit some of the boxes. After you finish filling out the Project management folder **re-tick** *Use project subfolders*.

**Note: You will need to create these folders in the browse menu to select them if they do not already exist.**

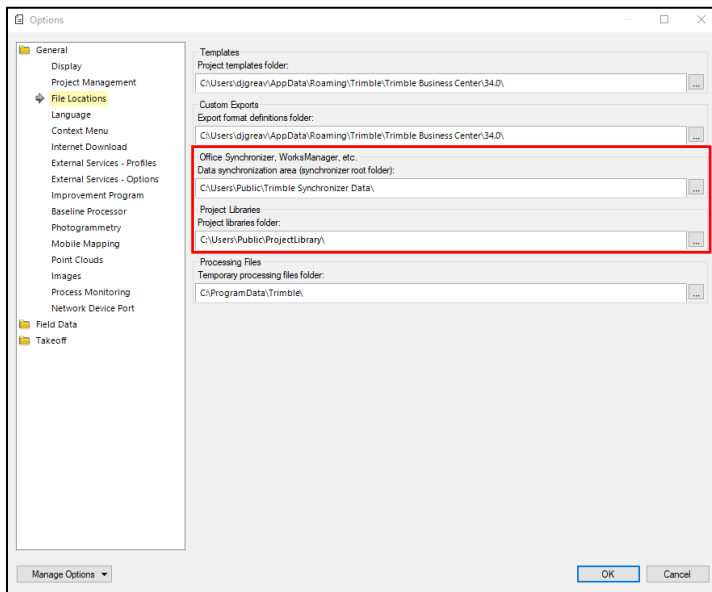
- Tick on **Enable reminder** and select a 15-minute interval



#### 5. Select **File Locations**

- Change the Office Synchronizer folder to *C:\Users\Public\Trimble Synchronizer Data*
- Change the Project Library to *C:\Users\Public\ProjectLibrary*

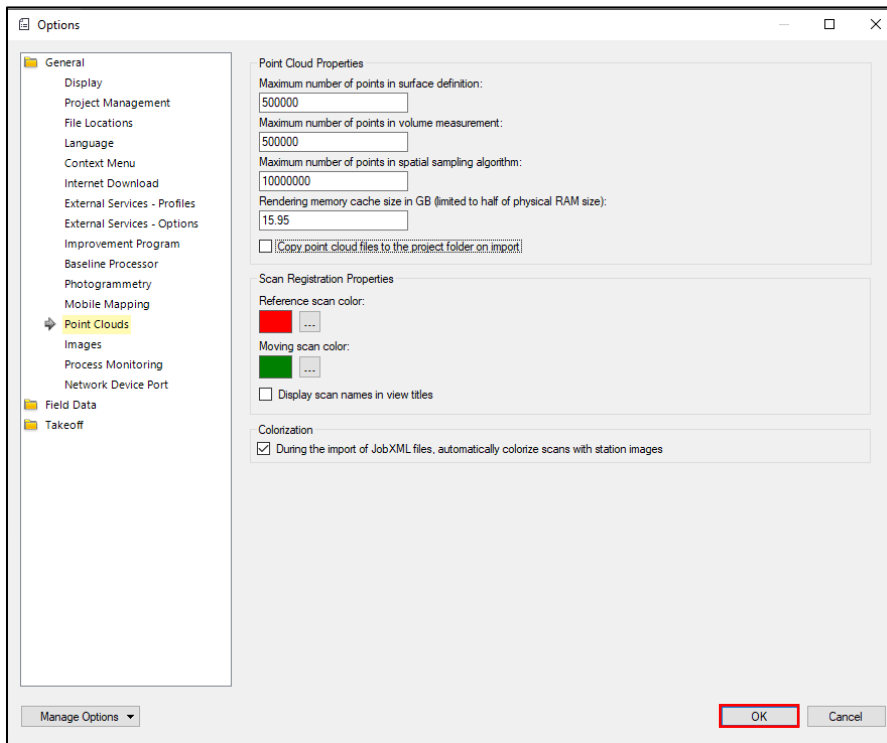
**Note: You will need to create these folders in the browse menu to select them if they do not already exist.**



## 6. Select **Point Clouds**

Change the Rendering memory cache size to the value that corresponds to half of your physical memory (RAM). In my example the RAM is 32 GB, so I entered 16GB.

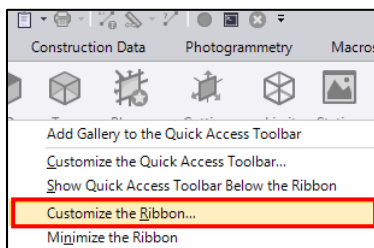
Device specifications	
Device name	TM10330300
Processor	Intel(R) Xeon(R) CPU E5-1630 v4 @ 3.70GHz 3.70 GHz
Installed RAM	32.0 GB (31.9 GB usable)
Device ID	b77ceca1-ffc2-4ab8-8fea-495e47fdc144
Product ID	00329-00000-00003-AA548
System type	64-bit operating system, x64-based processor
Pen and touch	No pen or touch input is available for this display



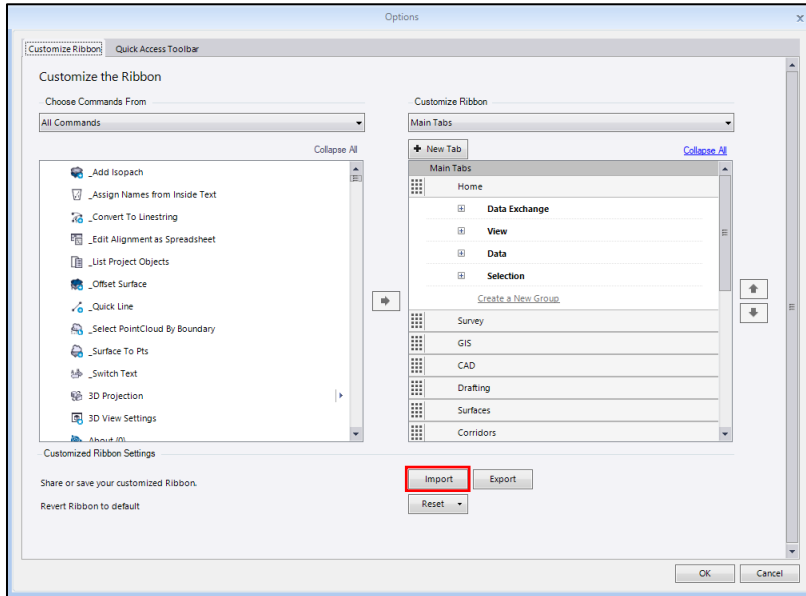
7. Press **OK**

8. **Right Click** on the ribbon at the top of the screen

9. Select **Customize the Ribbon**

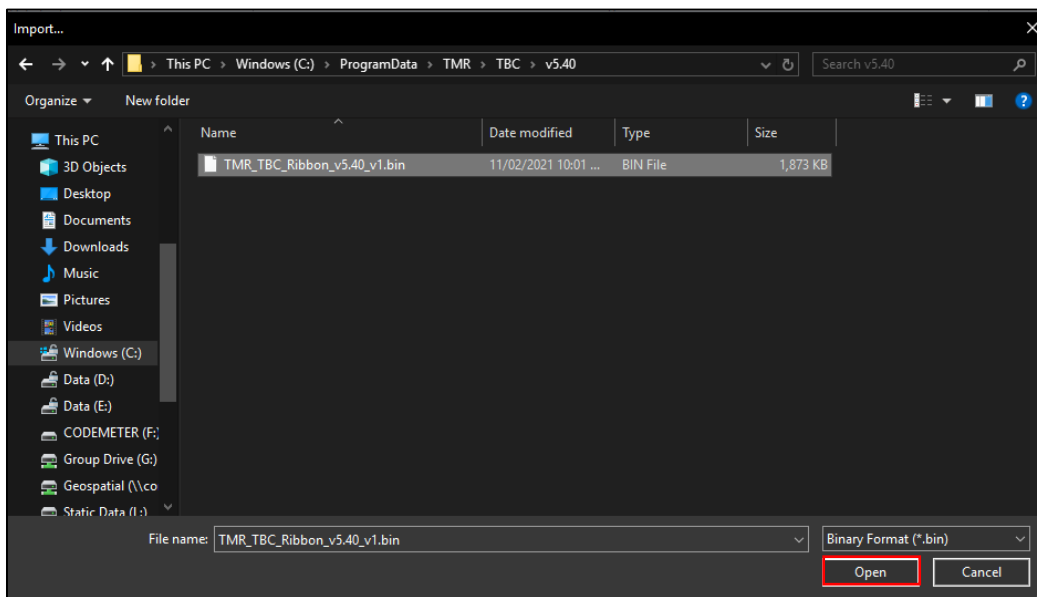


## 10. Press Import

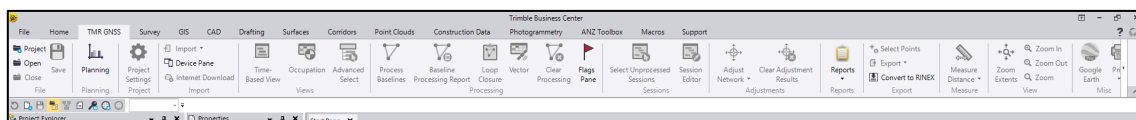


11. Browse to **C:\ProgramData\TMR\TBC\v5.40** and select **TMR\_TBC\_Ribbon\_v5.40\_v1.bin**

12. Press Open



13. Press OK



Your ribbon should now contain the **TMR GNSS** tab and our customised **Quick Access Toolbar**.