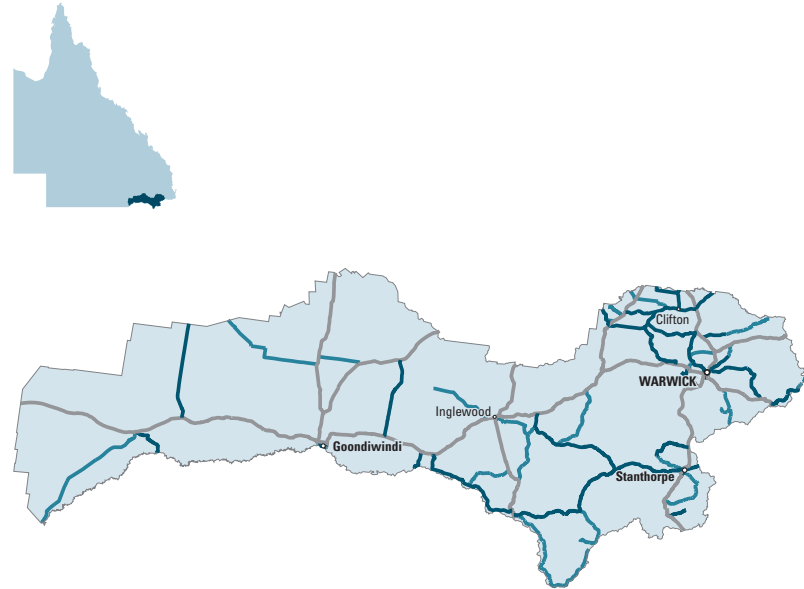


SOUTHERN DOWNS



LEGEND

- MR Local Roads of Regional Significance
- LG Local Roads of Regional Significance
- All Other State-controlled Roads

REGIONAL OBJECTIVES

The SDRRG's major objectives are the development of a Local Roads of Regional Significance (LRRS) works program that:

- + Addresses safety concerns and preserves existing road assets
- + Assists economic activity and promotes the region
- + Improves access during wet weather and ensures better inter-community access
- + Enhances local business capability and grows regional employment opportunities.

PROGRESS

Southern Downs RRG has progressed extremely well and reached all milestones set by the Alliance Board. These include:

- + Implementation of asset management systems including associated training and data input
- + Completion of road safety training
- + Review of consistency of Stage 2 Road Investment Strategies
- + Completion of gap analysis reports

- + Incorporating the five year programs into member council's works programs for the full five years although this will still be subject to annual council budgets
- + Great support from the Main Roads Border District.

FUTURE ACTIONS

- + Complete an improved RRG 5 Year Regional Works Program
- + Maximise further benefits from new initiatives in joint purchasing and resource sharing adopted by the RRG
- + Complete the "Capability Improvement Plan"
- + Use the capability plan to guide consolidation of current Alliance practices and build further capability in identified areas.

PROFILE

The Southern Downs Regional Road Group (SDRRG) covers 27,281 sq km, and has a resident population of approximately 45,000. Transport operations and the road network have a significant impact on the region's viability of the major industries or agriculture, tourism, manufacturing and retail.

MEMBERS (OF RRG)

Clifton, Goondiwindi, Inglewood, Stanthorpe, Waggamba, Warwick and Main Roads.

RRG CHAIR

Cr Ron Bellingham – Mayor Warwick Shire Council
 Previous Chair, Cr Tom Woods, Waggamba Shire Council

TECHNICAL COMMITTEE CHAIR

Peter See – Warwick Shire Council
 Previous Chair, Mr Dave Burges, Waggamba Shire Council

SECRETARIAT

Warwick Shire Council

LRRS LENGTH

1202 km

COMMITTED AVERAGE ANNUAL FUNDING LEVEL FOR LRRS NETWORK:

\$5,577,000

REPORTED AVERAGE ANNUAL INVESTMENT FOR LRRS NETWORK:

\$5,575,000



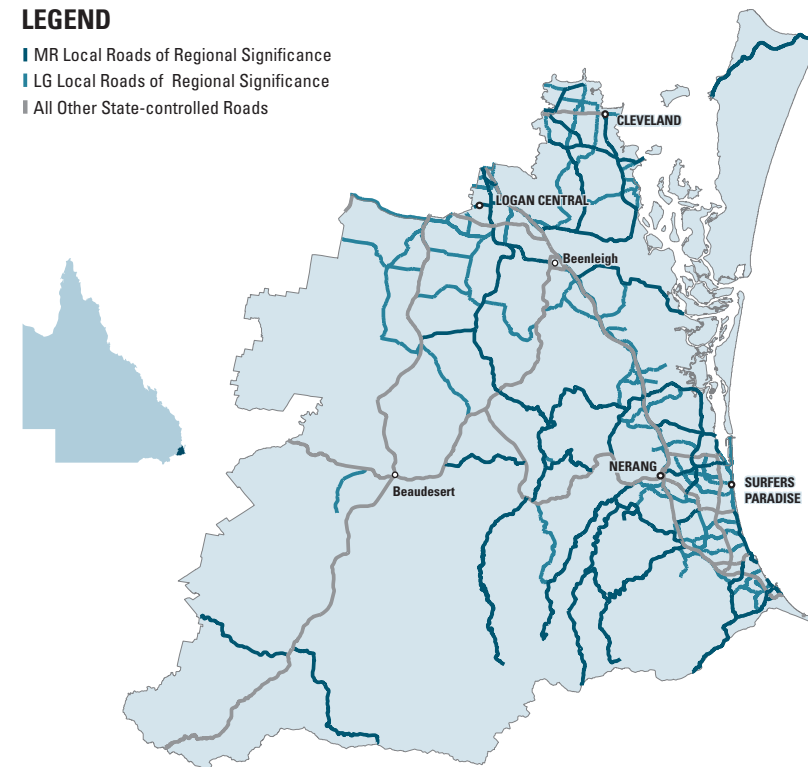
Cr Ron Bellingham

Peter See

SOUTH ROC

LEGEND

- MR Local Roads of Regional Significance
- LG Local Roads of Regional Significance
- All Other State-controlled Roads



REGIONAL OBJECTIVES

To ensure transport operations and the road network infrastructure provides the appropriate level of service to enable the region to attract and sustain major industry development to continuously provide employment and lifestyle for the current and growing population. The SRRRG's objectives clearly focus on developing reliable road investment strategies that identify a well planned regional works program for the Local Roads of Regional Significance (LRRS) that:

- + Cater for very significant population growth – current and projected
- + Cater for diverse urban traffic demands
- + Accommodate significant industry growth throughout the region
- + Accommodate significant tourism traffic demand
- + Integrate public transport solutions into LRRS outcomes.

PROGRESS

SRRRG has progressed and reached most milestones set by the Alliance Board. These include:

- + Upgrading of asset management systems including associated training

- + Completion of asset management data collection
- + Completion of investment strategy tool that provides the RRG with consistency when finalising the road investment strategies Stage 2 for RRG members
- + Completion of the SouthROC prioritisation tool which has enhanced the development of the 2006 Alliance project prioritisation tool for all RRGs
- + Completion of training in road safety initiatives
- + Completion of the 5 Year Works Program Development Process.

FUTURE ACTIONS

- + Review road investment strategies in relation to consistency
- + Improve on the next year's program development and project prioritisation process
- + Complete the RRG's "Capability Improvement Plan"
- + Implement the use of NetRISK.

PROFILE

The SouthRoc Regional Road Group (SRRRG) covers 5,049 sq km, and has a resident population of approximately 800,000. The region encompasses the rapidly urbanising corridor between Brisbane and the New South Wales border. With an additional one million people expected to settle in southeast Queensland over the next 20 years, SouthRoc will play a major role in accommodating much of this population growth.

MEMBERS (OF THE RRG)

Beaudesert, Gold Coast, Logan City, Redlands, and Main Roads

RRG CHAIR

Cr Don Seccombe – Mayor of Redland Shire Council

TECHNICAL COMMITTEE CHAIR

Mr Peter Way – Logan City Council

SECRETARIAT

Logan City Council

LRRS LENGTH

844 km

COMMITTED AVERAGE ANNUAL FUNDING LEVEL FOR LRRS NETWORK:

\$63,007,000

REPORTED AVERAGE ANNUAL INVESTMENT FOR LRRS NETWORK:

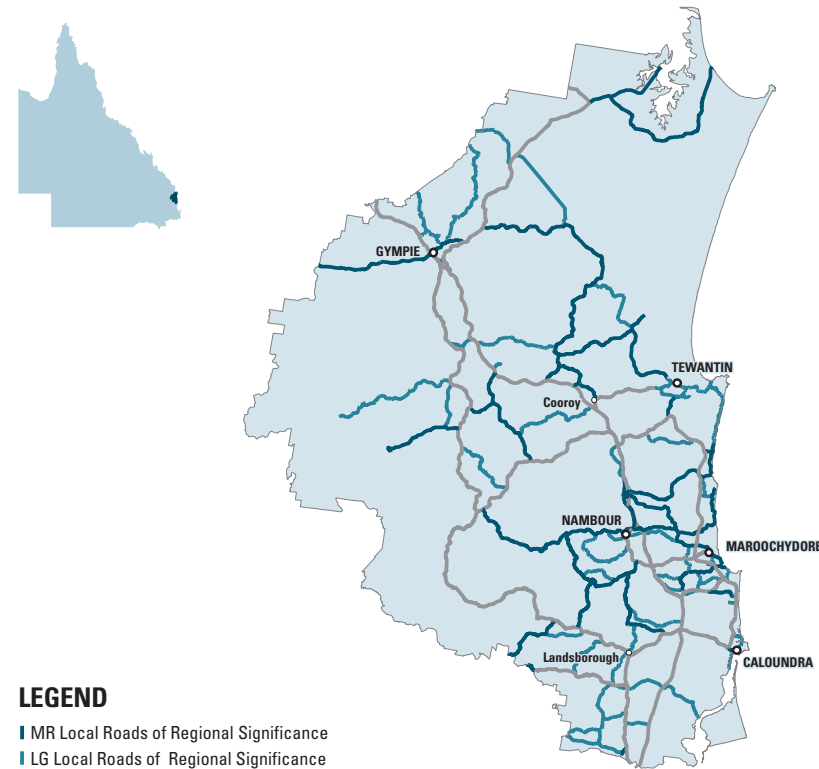
\$156,440,000



Cr Don Seccombe

Mr Peter Way

SUNROC/ COOLOOLA



LEGEND

- MR Local Roads of Regional Significance
- LG Local Roads of Regional Significance
- All Other State-controlled Roads

REGIONAL OBJECTIVES

The SCRGG's objectives are to develop a Local Roads of Regional Significance (LRRS) works program that will:

- + Bring the LRRS network to an agreed desirable level of service
- + Adopt a multi-modal approach when delivering infrastructure outcomes, ensuring public transport, bikeways and walking trails are catered for as well as private and commercial vehicles
- + Address minimum safety needs of the LRRS network
- + Recognise the demands of growth and changing demographics of the region
- + Provide a regional focus to a single network approach for investment planning
- + Provide a LRRS network that caters for the needs of primary producers, industry and tourism.

PROGRESS

SCRGG has progressed and reached most milestones set by the Alliance Board. These include:

- + Upgrading of existing asset management systems including associated training
- + Completion of data collection and training

- + Completion of road investment strategies Stage 2
- + Completion of training for Alliance road safety initiatives
- + Development the 5 Year Regional Works Program for the LRRS for 2006-07 to 2010-11
- + The first RRG in Queensland to transfer funding from the state controlled network to the local government network in accordance with Roads Alliance funding rules.

FUTURE ACTIONS

- + Improve the RRG's 5 Year Regional Works Program for the next year's process
- + Maximise the benefits from the joint purchasing and resource sharing initiatives
- + Fully consider project scheduling and moderation of priorities across all members' 5 year works programs
- + Identify in the "Capability Improvement Plan" the best way to consolidate current Alliance practices and look where to build future capability and capacity
- + Develop a State of the Network Report to be provided annually to the RRG.

PROFILE

The SUNROC/Cooloola Regional Road Group (SCRGG) covers an area of 6,093 sq km, with a resident population of approximately 289,000. This part of southeast Queensland is experiencing very high population growth. The natural environment, tourism, primary production, and evolving secondary and service industries combined with the attractive lifestyle, all contribute to population growth and the subsequent demand for increased provision of infrastructure, such as roads.

MEMBERS (OF RRG)

Caloundra City, Cooloola, Maroochy, Noosa and Main Roads.

RRG CHAIR

Cr Joe Natoli, – Mayor Maroochy Shire Council

TECHNICAL COMMITTEE CHAIR

Mr Nick Cooney – Maroochy Shire Council

SECRETARIAT

Maroochy Shire Council

LRRS LENGTH

922 km

COMMITTED AVERAGE ANNUAL FUNDING LEVEL FOR LRRS NETWORK:

\$26,100,000

REPORTED AVERAGE ANNUAL INVESTMENT FOR LRRS NETWORK:

\$35,805,000

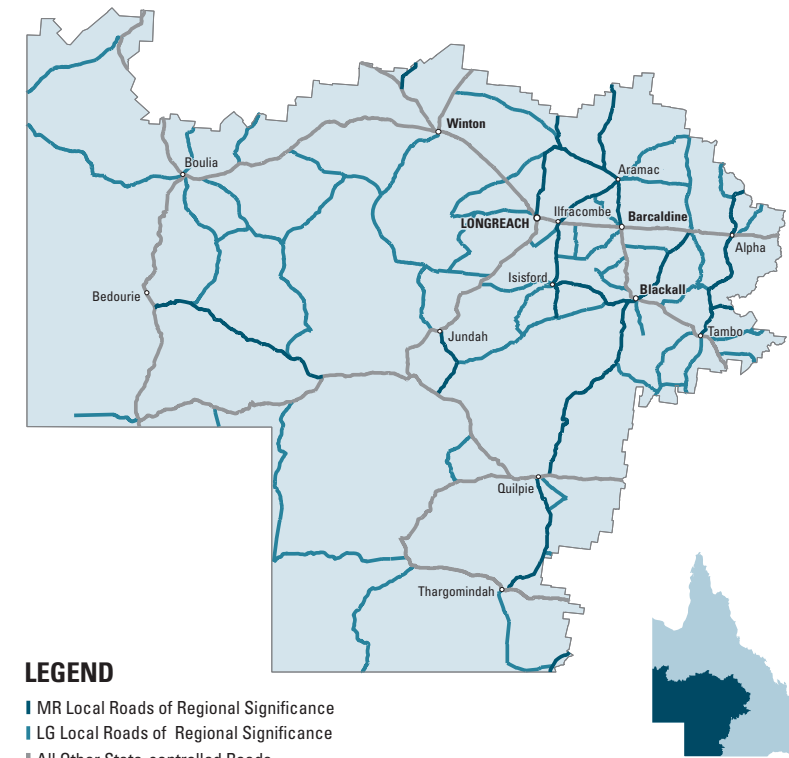


Cr Joe Natoli



Mr Nick Cooney

THE OUTBACK



LEGEND

- MR Local Roads of Regional Significance
- LG Local Roads of Regional Significance
- All Other State-controlled Roads

REGIONAL OBJECTIVES

The ORRG's objectives relate to developing Local Roads of Regional Significance (LRRS) works programs that:

- + Contribute to an effective and efficient transport network and minimise delays caused by flooding
- + Accurately represent the real needs of the outback region
- + Contribute and support regional and economic development and stimulates economic growth through investment in the road network
- + Improve accessibility to essential services and provide quality of life within the region
- + Improve technical skilling and resourcing of district and council offices to meet community needs.

PROGRESS

The ORRG has progressed and reached most milestones set by the Alliance Board. These include:

- + Some progress in asset management system use including associated training
- + Completion of data collection and training

- + Completion of road investment strategies Stage 2
- + Completion of training and information sessions for the 5 Year Works Program Development Process
- + Review of projects for the prioritisation process.

FUTURE ACTIONS

- + Reassess asset management system use
- + Completion of the next RRG 5 Year Regional Works Program
- + Continue to derive benefits from the joint purchasing and resource sharing initiatives
- + Maximise the financial benefits from working together as an RRG
- + Consider Alliance project prioritisation methodologies
- + Identify appropriate methods and advocate as a group to increase road funding to the ORRG's vital road network
- + Use the development of the "Capability Improvement Plan" as a guide to improving capacity and capability of the RRG.

PROFILE

The Outback Regional Road Group (ORRG) covers 538,000 sq km, and has a resident population of approximately 15,000. The road network has a significant impact on the regions viability as well as the major industries such as mineral resources, tourism and cattle as it is located in one of the most productive export producing areas of the State. The road network also serves an important role in connecting local communities and providing access to basic services.

MEMBERS (OF THE RRG)

Aramac, Barcaldine, Blackall, Ilfracombe, Isisford, Jericho, Longreach, Tambo, Barcoo, Boulia, Bulloo, Diamantina, Quilpie, Winton and Main Roads

RRG CHAIR

Cr Dougal Davidson – Mayor Tambo Shire Council

TECHNICAL COMMITTEE CHAIR

Mr Graeme Wills – George Bourne and Associates

SECRETARIAT

Tambo Shire Council

LRRS LENGTH

7005 km

COMMITTED AVERAGE ANNUAL FUNDING LEVEL FOR LRRS NETWORK:

\$13,800,000

REPORTED AVERAGE ANNUAL INVESTMENT FOR LRRS NETWORK:

\$18,258,000



Cr Dougal Davidson



Mr Graeme Wills