

30

# Outback RRG (as at June 2013)

**RRG Members**

- Barcaldine Regional Council
- Barcoo Shire Council
- Blackall-Tambo Regional Council
- Boulia Shire Council
- Diamantina Shire Council
- Longreach Regional Council
- Winton Shire Council
- TMR's Central Queensland Region

**RRG Chair**

Councillor Rick Britton, Mayor  
Boulia Shire Council

**RRG Technical Committee Chair**

David Timms, Director of Engineering  
Winton Shire Council

**Technical Coordinator**

Jill Williams, Senior Asset Management  
Technician, Opus International Consultants

**Legend**

- Local Government Local Roads of Regional Significance
- Transport and Main Roads Local Roads of Regional Significance
- Other state-controlled roads and franchised motorways

**Profile**

Outback Regional Road Group (Outback RRG) covers 396 650 km<sup>2</sup> with a resident population of approximately 12 405. The Outback RRG covers one of Queensland's most productive export-producing areas and has major industries in mineral resources, tourism and cattle. The road network plays an important role in connecting local communities and providing access to basic services.

**Roads Alliance TIDS Expenditure**

Outback RRG achieved its forecast expenditure of 105% in 2012-13, up from 64% in 2011-12.

**YTD EXPENDITURE (ACTUAL VS FORECAST)**

Month	Actual (A)	Forecast (F)	Revised Budget (RB)
Jul	500	500	2600
Aug	550	550	2600
Sep	600	600	2600
Oct	1100	1100	2600
Nov	1100	1100	2600
Dec	1150	1150	2600
Jan	1300	1300	2600
Feb	1400	1400	2600
Mar	1700	1700	2600
Apr	2200	2200	2600
May	2500	2500	2600
Jun	2750	2750	2600

Note: Amounts shown are in \$1000's and are rounded. Data includes projects only.

Progress Report 2012/13

# Rockhampton RRG (as at June 2013)

## RRG Members

Rockhampton Regional Council  
TMR's Central Queensland Region

## RRG Chair

Councillor Margaret Strelow, Mayor  
Rockhampton Regional Council

## RRG Technical Committee Chair

Paul Shelton, Principal Engineer  
TMR's Central Queensland Region

## Technical Coordinator

Gerard Read  
GWR Civil Engineering Management

## Profile

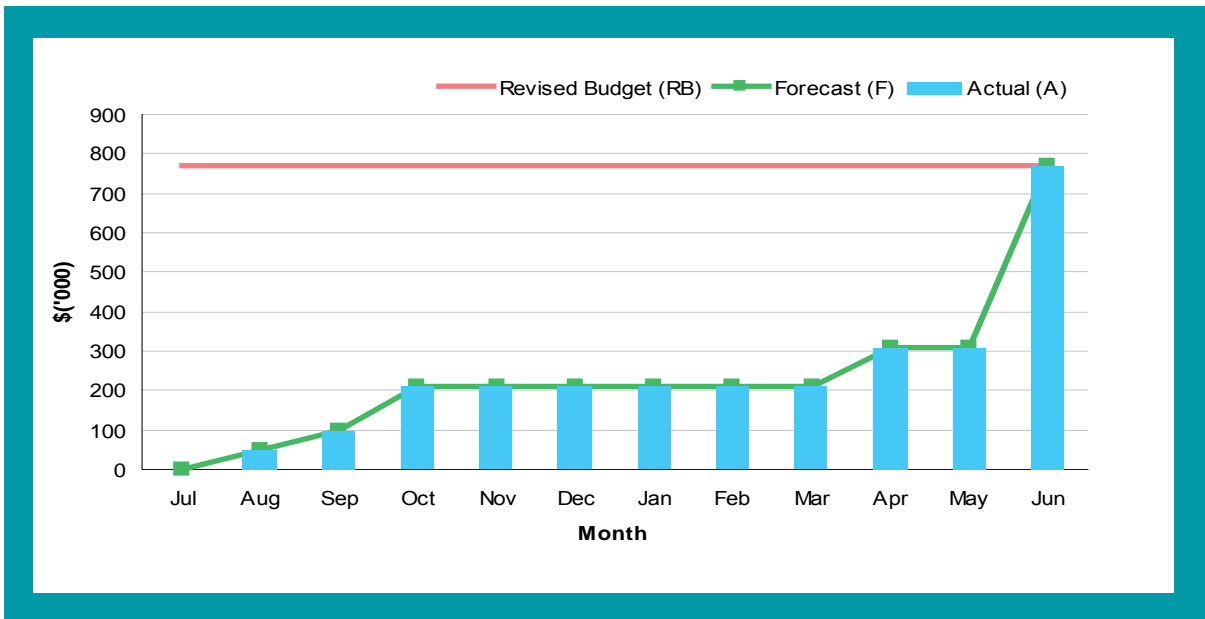
The Rockhampton Regional Road Group (Rockhampton RRG) covers 18 356 km<sup>2</sup> and has a resident population of approximately 115 419. Transport operations and the road network within the Rockhampton area support the local industries of beef cattle, tourism, education, retail, manufacturing, military and forestry. The road network also provides access for the major industries of mining, agriculture, beef cattle, tourism, manufacturing and seaport operations found in the adjoining regions. The area includes the major centres of Rockhampton, Gracemere and Yeppoon, as well as many other smaller townships.



## Roads Alliance TIDS Expenditure

Rockhampton RRG achieved its forecast expenditure of 100% in 2012-13. This is the second successive year Rockhampton RRG has achieved full expenditure.

## YTD EXPENDITURE (ACTUAL VS FORECAST)



Note: Amounts shown are in \$1000's and are rounded. Data includes projects only.

32

# Scenic Valleys RRG (as at June 2013)

**RRG Members**

Ipswich City Council  
 Lockyer Valley Regional Council  
 Scenic Rim Regional Council  
 TMR's South Coast Region  
 TMR's Metropolitan Region

**RRG Chair**

Councillor Virginia West  
 Scenic Rim Regional Council

**RRG Technical Committee Chair**

Patrick Murphy, Director of Works &  
 Infrastructure Services  
 Scenic Rim Regional Council

**Technical Coordinator**

Graham Jordan  
 Lemmah Consulting

**Legend**

- Local Government Local Roads of Regional Significance
- Transport and Main Roads Local Roads of Regional Significance
- Other state-controlled roads and franchised motorways

**Profile**

Scenic Valleys Regional Road Group (Scenic Valleys RRG) covers an area of 7 617 km<sup>2</sup> and has a resident population of approximately 251 823. Scenic Valleys RRG is located on the western fringe of the Brisbane metropolitan area. This is a productive part of South-east Queensland, and encompasses some of the richest farming land and largest parcels of designated industrial land in Australia. The western corridor of Brisbane has been identified as forming a major part of the solution to address the needs of South-east Queensland's rapidly growing population over the next two decades.

**Roads Alliance TIDS Expenditure**

Scenic Valleys RRG exceeded their forecast expenditure of 92%, achieving 97% expenditure in 2012-13, up from 85% in 2011-12.

**YTD EXPENDITURE (ACTUAL VS FORECAST)**

Month	Revised Budget (RB) (\$'000)	Forecast (F) (\$'000)	Actual (A) (\$'000)
Jul	1700	100	100
Aug	1700	100	100
Sep	1700	100	100
Oct	1700	100	100
Nov	1700	100	100
Dec	1700	100	100
Jan	1700	100	100
Feb	1700	100	100
Mar	1700	100	100
Apr	1700	100	100
May	1700	700	400
Jun	1700	1400	1600

Note: Amounts shown are in \$1000's and are rounded. Data includes projects only.

Progress Report 2012/13

# South West RRG (as at June 2013)

## RRG Members

- Balonne Shire Council
- Bulloo Shire Council
- Murweh Shire Council
- Paroo Shire Council
- Quilpie Shire Council
- Maranoa Regional Council
- TMR's Downs South West Region

## RRG Chair

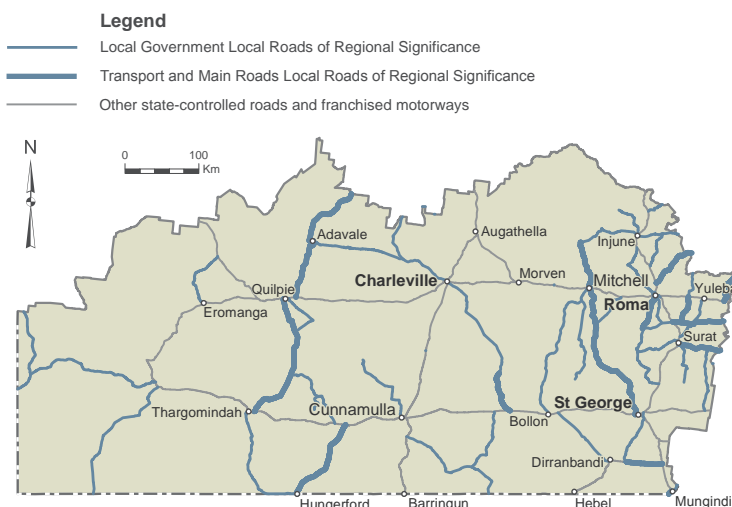
Councillor John Ferguson, Mayor  
Bulloo Shire Council

## RRG Technical Committee Chair

David Burges, Chief Executive Officer  
Quilpie Shire Council

## Technical Coordinator

Gary Cook  
Brandon & Associates



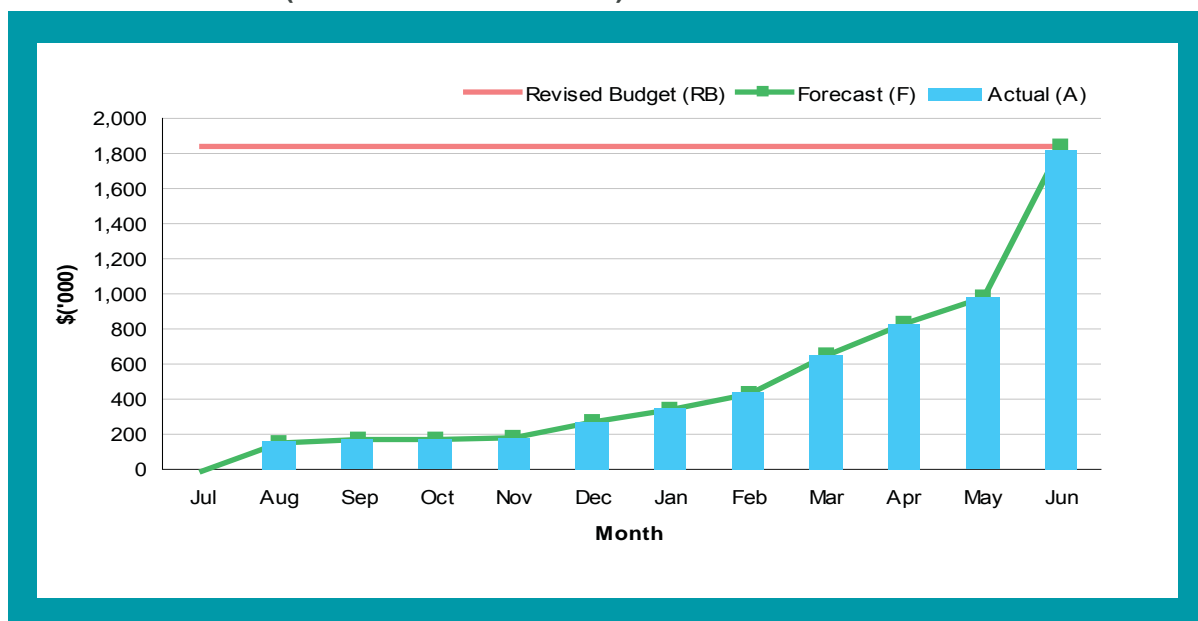
## Profile

South West Regional Road Group (South West RRG) covers an area of 319 854 km<sup>2</sup>. It extends from Bulloo in the west to Roma in the east, a distance of some 900 kilometres from east to west and 500 kilometres from north to south. The resident population within this area is approximately 26 464. Land use in the area varies from grazing to intensive agriculture to resources. Transport operations and the road network have a significant impact on the region's viability and the major industries of mining oil and gas, timber, agriculture, tourism, manufacturing and retail.

## Roads Alliance TIDS Expenditure

South West RRG achieved 99% of its forecast expenditure in 2012-13, up from 67% in 2011-12.

## YTD EXPENDITURE (ACTUAL VS FORECAST)



Note: Amounts shown are in \$1000's and are rounded. Data includes projects only.

34

# Southern Border RRG (as at June 2013)

**RRG Members**

Goondiwindi Regional Council  
 Southern Downs Regional Council  
 TMR's Downs South West Region

**RRG Chair**

To be advised

**RRG Technical Committee Chair**

Peter See, Director of Engineering Services  
 Southern Downs Regional Council

**Profile**

Southern Border Regional Road Group (Southern Border RRG) covers 26 405 km<sup>2</sup> and has a resident population of approximately 46 026. Transport operations and the road network have a significant role in supporting the region's major industries of agriculture, tourism, manufacturing and retail. The area contains important road networks connecting Brisbane to Sydney and Melbourne.

**Roads Alliance TIDS Expenditure**

Southern Border achieved its forecast expenditure of 96% in 2012-13, up from 65% in 2011-12.

**YTD EXPENDITURE (ACTUAL VS FORECAST)**

Month	Actual (A) (\$'000)	Forecast (F) (\$'000)	Revised Budget (RB) (\$'000)
Jul	20	20	1300
Aug	20	20	1300
Sep	20	20	1300
Oct	100	100	1300
Nov	250	250	1300
Dec	350	350	1300
Jan	450	450	1300
Feb	550	550	1300
Mar	600	600	1300
Apr	650	650	1300
May	1000	1000	1300
Jun	1250	1250	1300

Note: Amounts shown are in \$1000's and are rounded. Data includes projects only.

Progress Report 2012/13

# Southern RRG (as at June 2013)

## RRG Members

- Gold Coast City Council
- Logan City Council
- Redland City Council
- TMR's South Coast Region
- TMR's Metropolitan Region

## RRG Chair

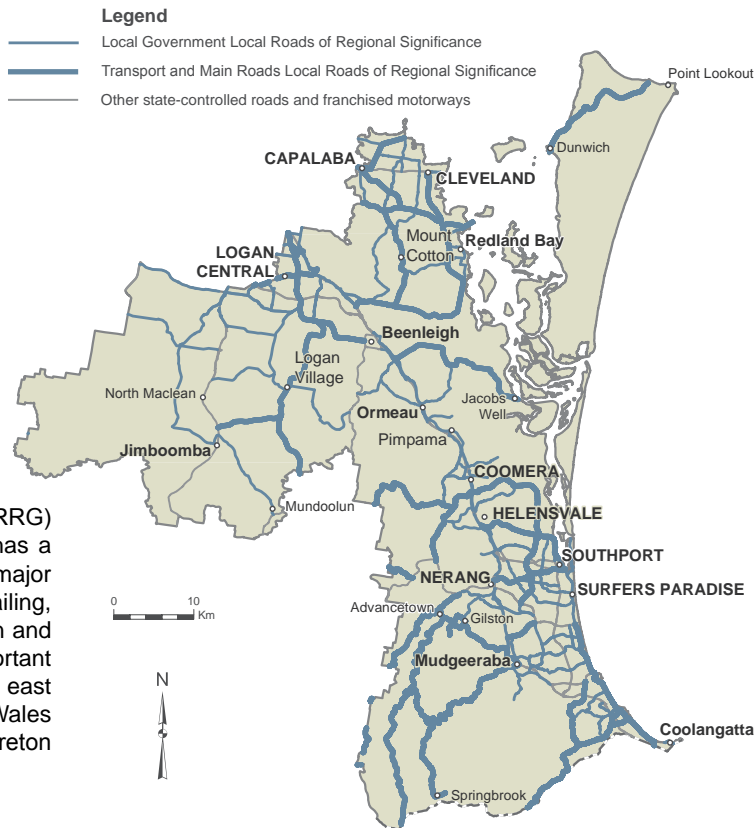
Councillor Don Petersen  
Logan City Council

## RRG Technical Committee Chair

Silvio Trinca, Deputy Chief Executive Officer (Infrastructure Services)  
Logan City Council

## Profile

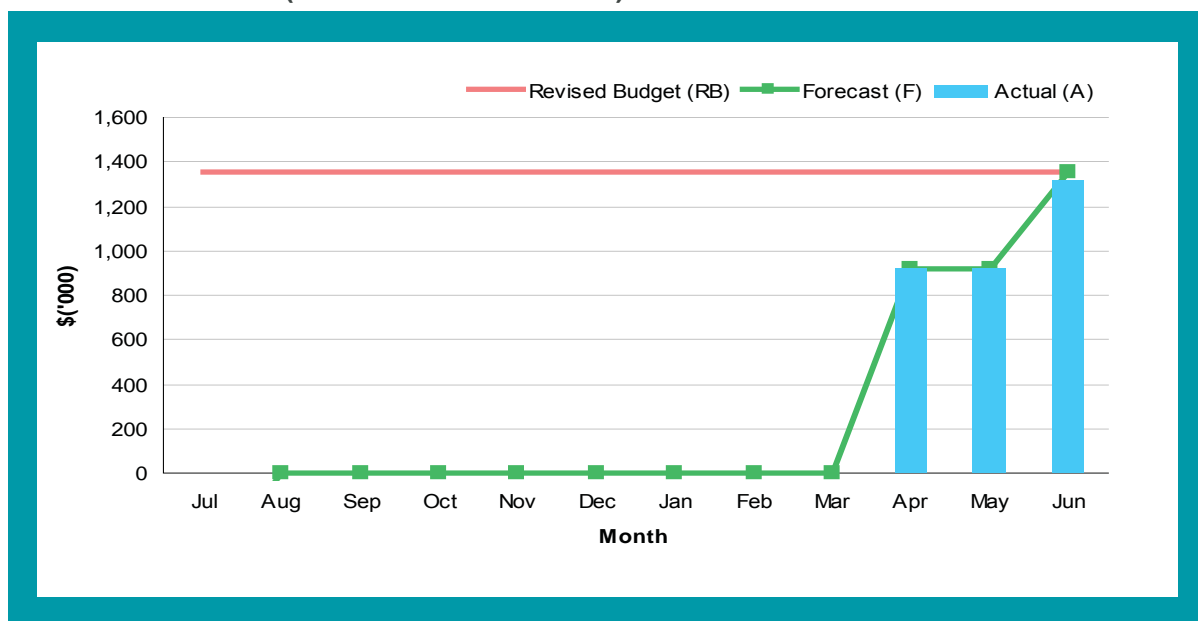
Southern Regional Road Group (Southern RRG) covers an area of just over 2 830 km<sup>2</sup> and has a resident population in excess of 965 165. The major industries in the area include tourism, retailing, education, health, manufacturing, construction and primary production. The area contains important road networks connecting Brisbane and south east Queensland to the Gold Coast, New South Wales (via the Pacific Motorway), and southern Moreton Bay.



## Roads Alliance TIDS Expenditure

Southern RRG achieved 97% of its forecast expenditure in 2012-13, up from 62% in 2011-12.

## YTD EXPENDITURE (ACTUAL VS FORECAST)



Note: Amounts shown are in \$1000's and are rounded. Data includes projects only.

36

# Western Downs RRG (as at June 2013)

**RRG members**

Western Downs Regional Council  
TMR's Downs South West Region

**RRG Chair**

Councillor Andrew Smith  
Western Downs Regional Council

**RRG Technical Committee Chair**

Graham Cook, Group Manager of Works  
Western Downs Regional Council

**Profile**

Western Downs Regional Road Group (Western Downs RRG) covers an area of 38 004 km<sup>2</sup> and has a resident population of approximately 32 902. The major industries in the area have traditionally been agriculture, including forestry operations, and grain, beef and sheep production. An increase in mining and energy activities and associated manufacturing has led to large increases in traffic volumes on all road networks within the Western Downs Region. The area contains important road networks including major transport links and roads connecting major regional centres.

The map shows the geographical layout of the Western Downs RRG. Towns marked include Auburn, Wandoan, Chinchilla, Warra, Dalby, Tara, Westmar, Moonie, Kogan, Condamine, Miles, Dulacca, Jandowae, and Bell. A legend identifies three road categories: Local Government Local Roads of Regional Significance (thin blue line), Transport and Main Roads Local Roads of Regional Significance (thick blue line), and Other state-controlled roads and franchised motorways (grey line). A scale bar indicates 0 to 25 km, and a north arrow is present.

**Roads Alliance TIDS Expenditure**

Western Downs RRG achieved its forecast expenditure of 100% in 2012-13, up from 81% in 2011-12.

**Legend**

- Local Government Local Roads of Regional Significance
- Transport and Main Roads Local Roads of Regional Significance
- Other state-controlled roads and franchised motorways

**YTD EXPENDITURE (ACTUAL VS FORECAST)**

The chart displays monthly expenditure from July to June. The Revised Budget (RB) is a constant horizontal line at approximately \$880,000. The Forecast (F) and Actual (A) values are shown as blue bars with green error bars. Actual expenditure remains below the forecast until May, where it reaches approximately \$480,000, and then spikes to nearly \$900,000 in June, meeting the revised budget.

Month	Revised Budget (RB) (\$'000)	Forecast (F) (\$'000)	Actual (A) (\$'000)
Jul	880	100	100
Aug	880	220	220
Sep	880	220	220
Oct	880	220	220
Nov	880	220	220
Dec	880	220	220
Jan	880	150	150
Feb	880	180	180
Mar	880	180	180
Apr	880	180	180
May	880	480	480
Jun	880	900	900

Note: Amounts shown are in \$1000's and are rounded. Data includes projects only.

Progress Report 2012/13