

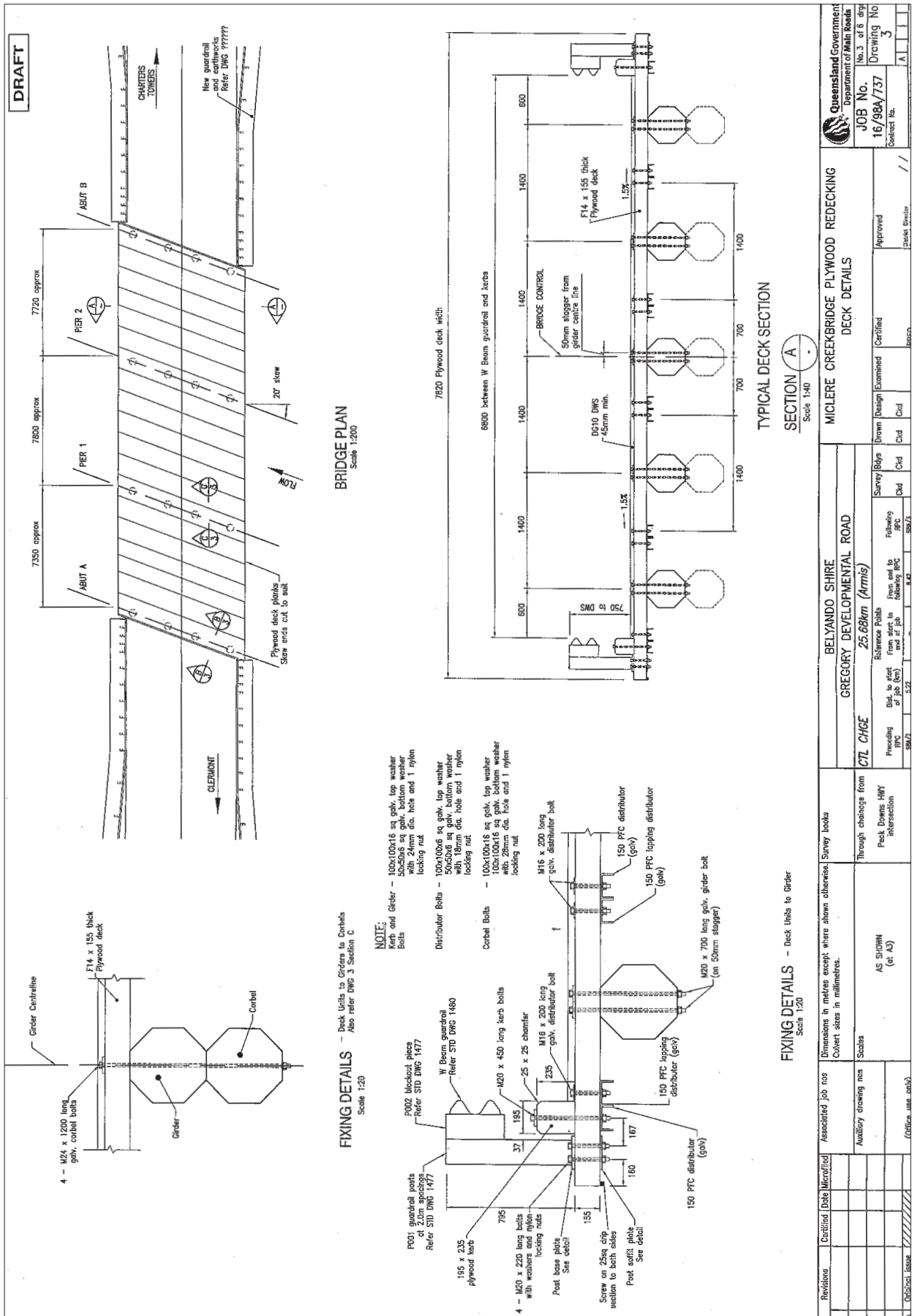


Appendix B Bridge Drawings

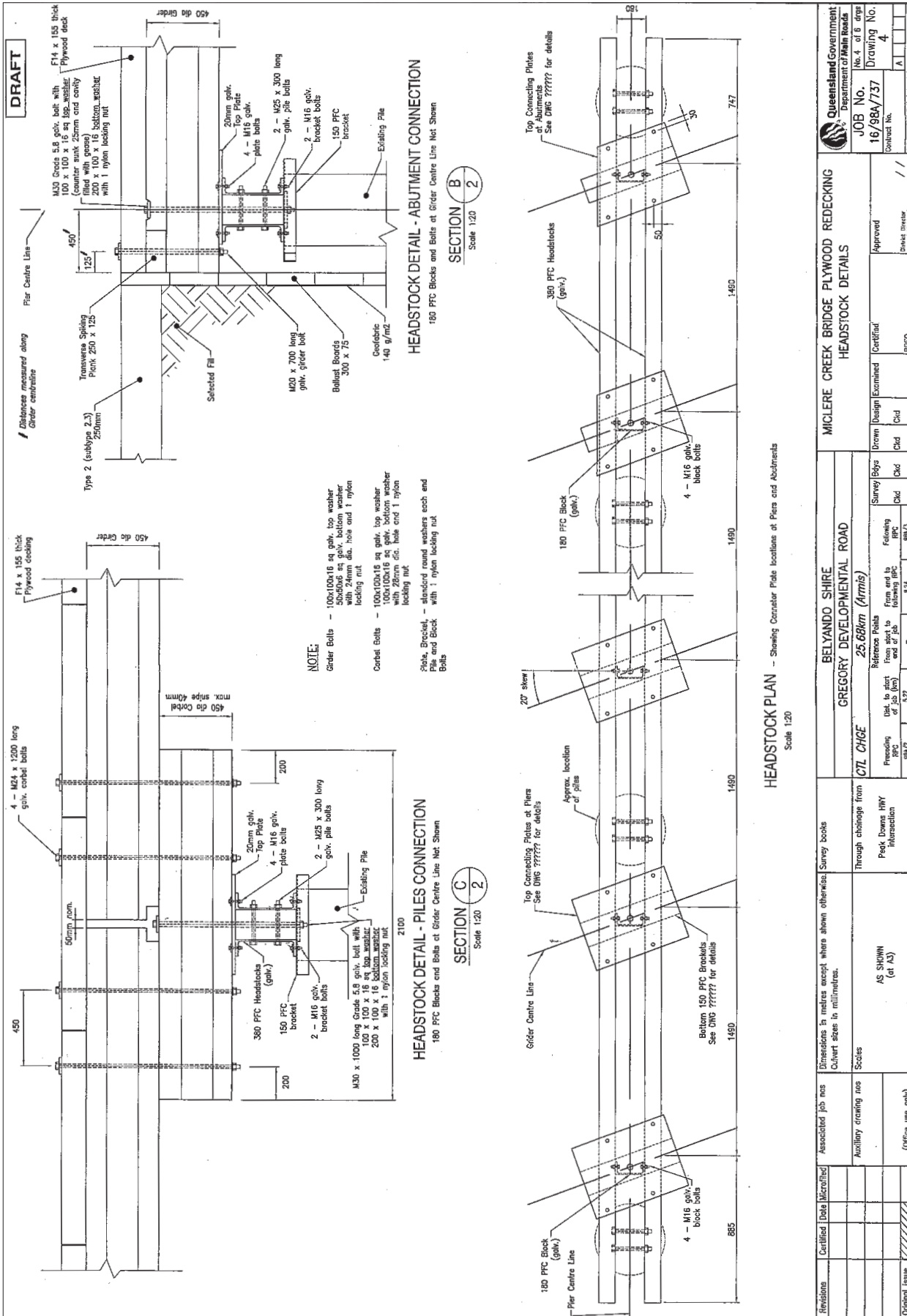


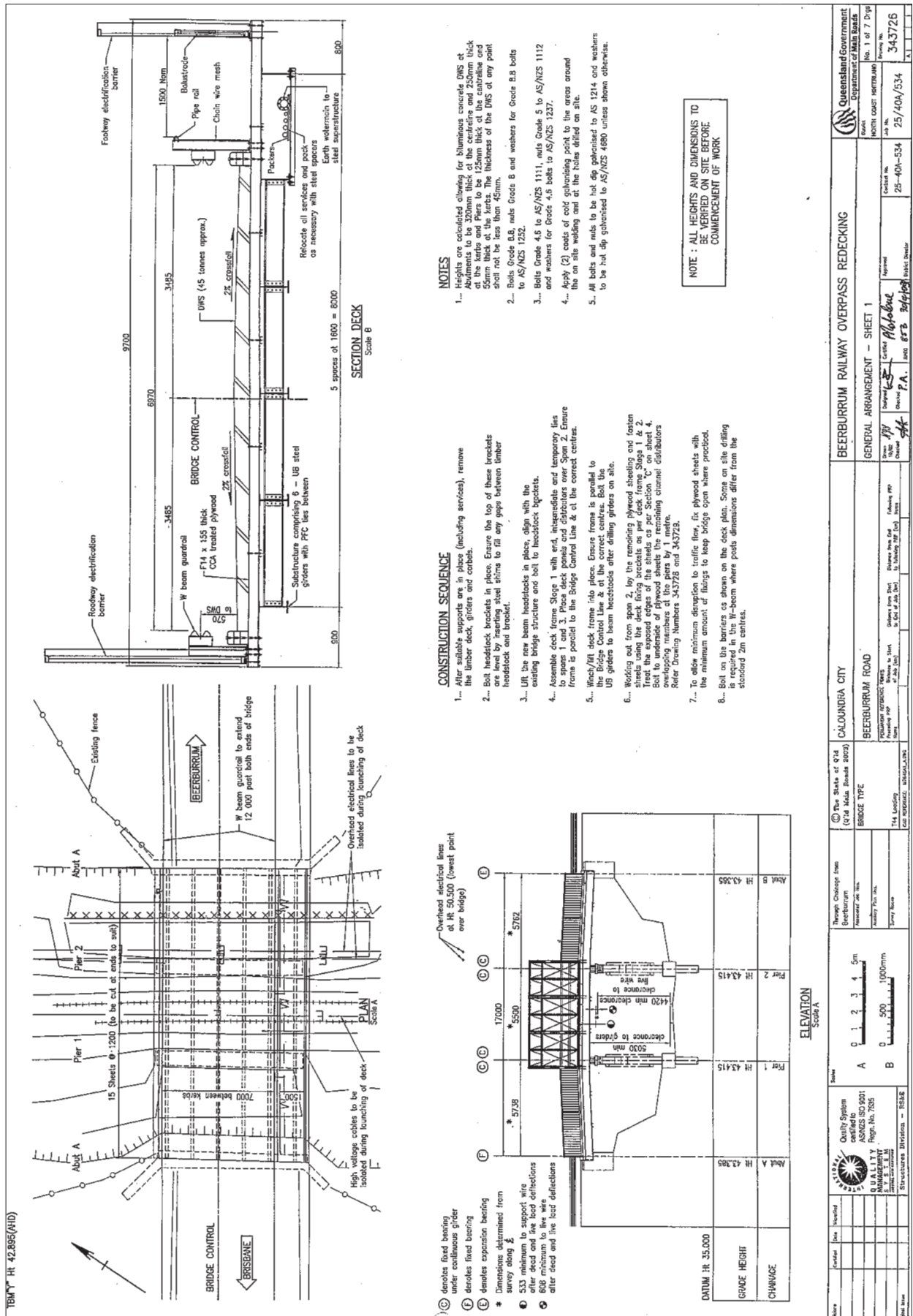
**Queensland
Government**

Department of
Main Roads

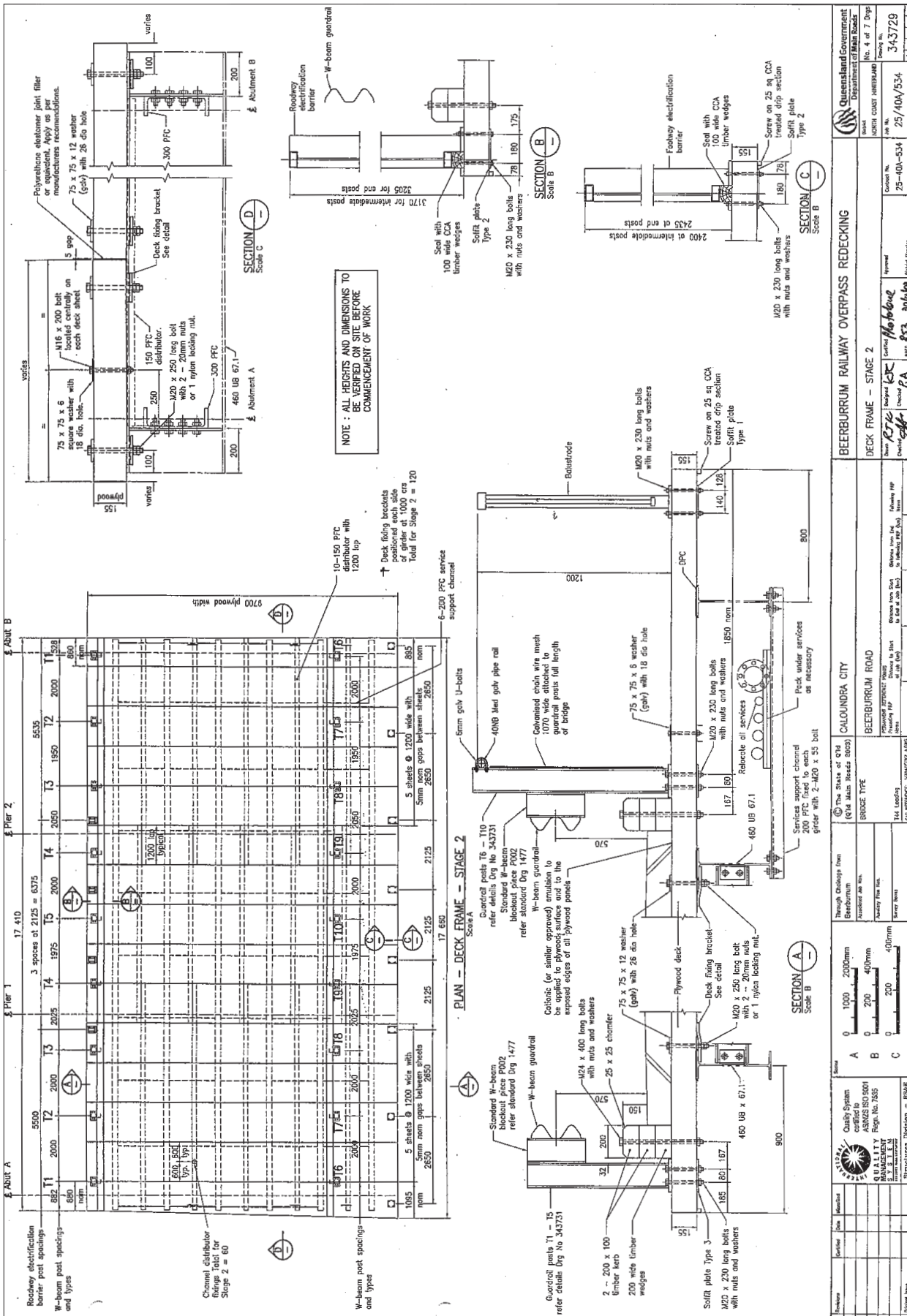


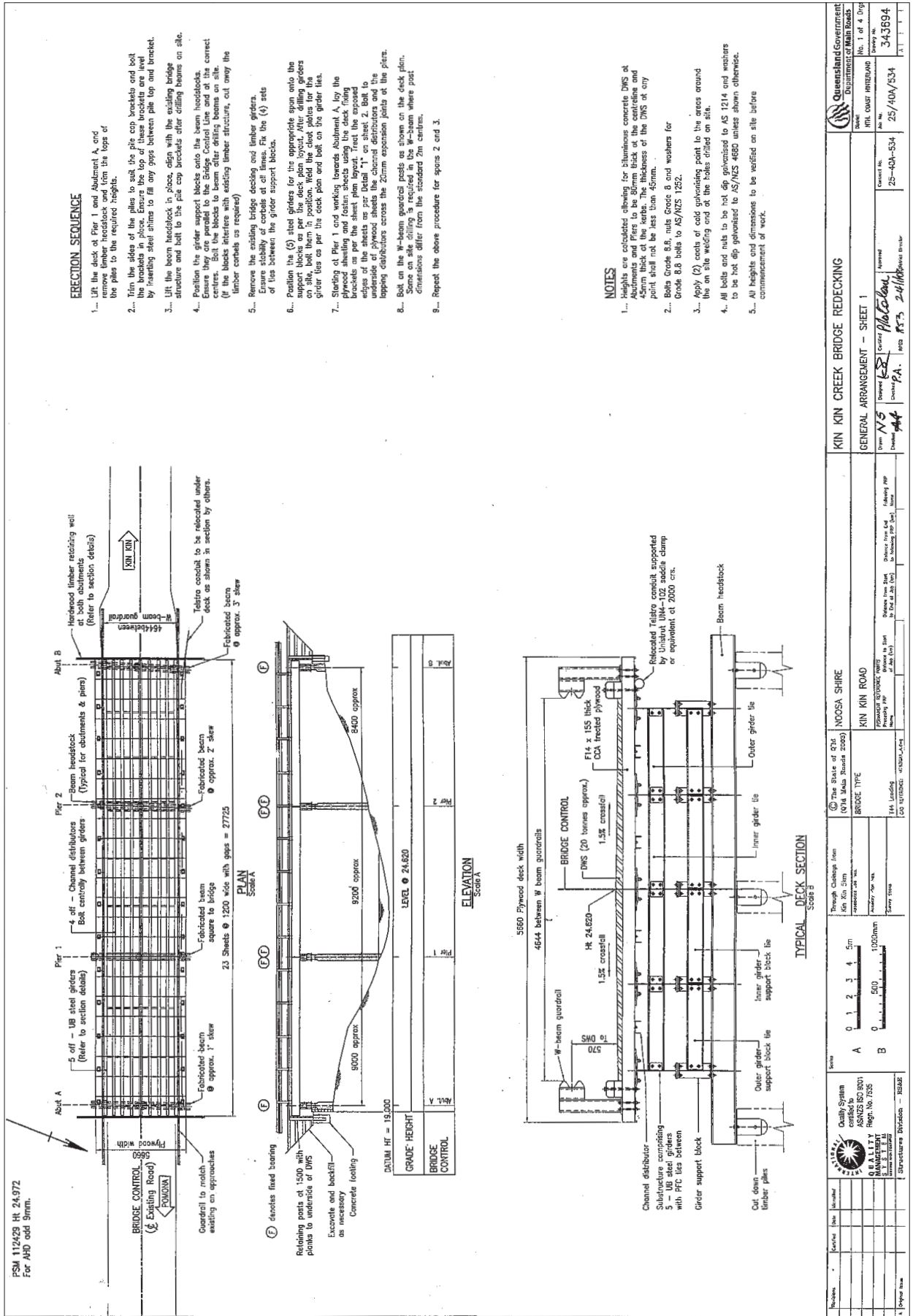
Appendix B





Appendix B





Appendix B

***Holes in the top flanges to be drilled on site after positioning the girder to the correct line and the required centre distance. All holes 28 dia**

SECTION A Scale A

SECTION B Scale B

SECTION C Scale C

SECTION D Scale D

POST SOFFIT PLATE DETAIL Scale A

POST BASE PLATE DETAIL Scale A

BEAM HEADSTOCK Scale A

BEAM HEADSTOCK Scale A

GIRDER TIE MOUNTING BRACKET Scale B

DECK FIXING BRACKET Scale B

PILE CAP BRACKET Scale A

GIRDER BEARING PLATE Scale B

GIRDER SUPPORT BLOCK Scale B

LAPPING DISTRIBUTOR Scale A

NOTES

- Plates to be Grade 250 to AS/NZS 3678.
- All welds to be SP category. All welding symbols on drawings conform to AS 1101.3. All welding to conform to AS/NZS 1554.1. Welding consumables to be controlled hydrogen type E60XX or W60XX unless shown otherwise.
- All steelwork to be hot dip galvanized to AS/NZS 4680.
- All steelwork to have void separator and welding slag removed prior to hot dip galvanizing to AS/NZS 4680.
- Bolts Grade 8.8, nuts Grade 8 and washers for Grade 8.8 bolts to AS/NZS 1252.
- All bolts and nuts to be hot dip galvanized to AS 1214 unless shown otherwise.
- Welds to be protected to AS 1533 unless shown otherwise.
- Steelwork to be fabricated to the requirements of AS 1179 - Fabrication of Structural Steelwork.
- Apply (2) coats of cold galvanising paint to the areas around the on site welding end of the bolts drilled on site.

QUANTITY SCHEDULE

Item No.	Quantity	Unit
1	28	POST ASSEMBLIES-REQUIRED
2	12	PILE CAP BRACKET
3	24	REQUIRED INNER GIRDER TIE
4	24	REQUIRED OUTER GIRDER TIE
5	8	REQUIRED OUTER GIRDER SUPPORT BLOCK TIE
6	179	REQUIRED DECK FIXING BRACKET
7	30	REQUIRED GIRDER BEARING PLATE
8	8	REQUIRED LAPPING DISTRIBUTOR
9	96	REQUIRED GIRDER TIE MOUNTING BRACKET
10	4	REQUIRED BEAM HEADSTOCK

REVISION RECORD

Rev	By	Date	Description
1	J.S.	12/11/10	Issue for Cost
2	J.S.	12/11/10	Issue for Tender
3	J.S.	12/11/10	Issue for Construction

PROJECT INFORMATION

Client: Queensland Government - Department of Main Roads

Project No: 25/40A/534

Scale: 1:10

Sheet No: 343687