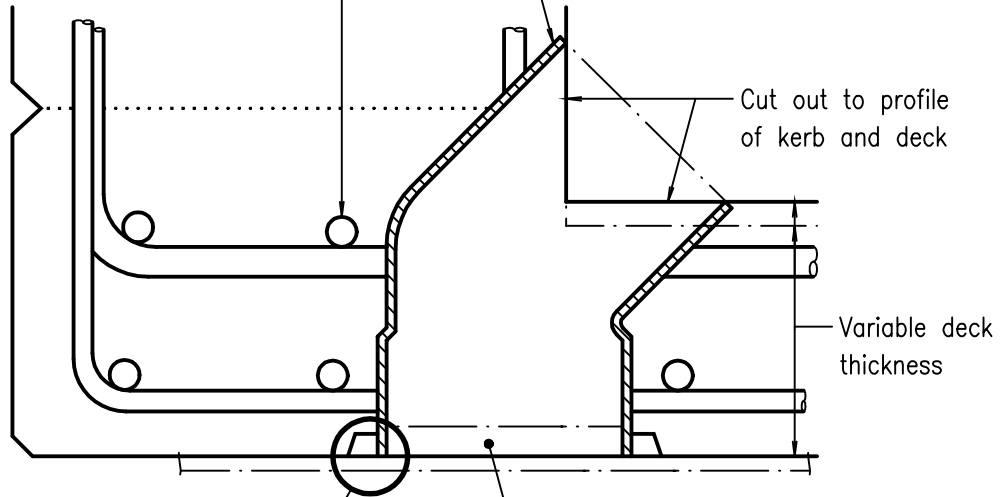


Reinforcement to be displaced to clear scupper and maintain cover

Scupper out of 150 dia. P.V.C. pipe fitting as specified. (see notes)

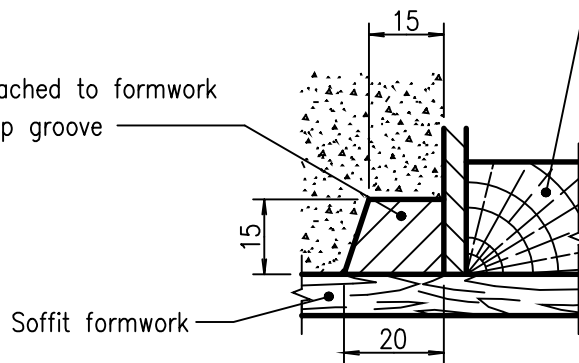


For alternative drip arrangements, see Details A and B

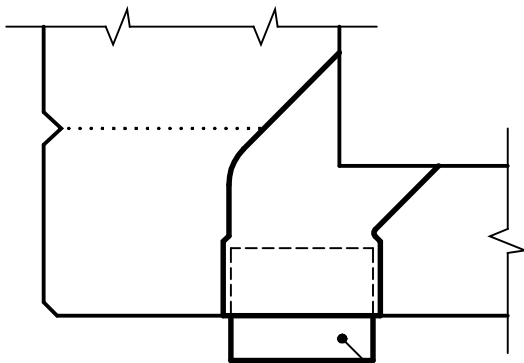
160 O.D. plywood block attached to formwork to locate scupper

### SECTIONAL ELEVATION

Preformed ring 170 I.D. attached to formwork to locate pipe and form drip groove



### DETAIL A - DRIP GROOVE



After stripping formwork, solvent weld 125mm length of standard P.V.C. pipe as specified into scupper (see notes)

### DETAIL B - DRIP SPOUT


#### NOTES :

1. ACCEPTABLE PRODUCT Vinidex Rigid P.V.C. Sewer Fitting (S.H.) 150 dia. 45° Bend M and F or equivalent.
2. MINIMUM WALL THICKNESS to be 4mm.
3. DIMENSIONS are in millimetres.

#### ASSOCIATED DOCUMENTS :

Department of Main Roads Manual of Standard Drawings Roads

Department of Main Roads Manual of Standard Specifications Roads

<b>STANDARD P.V.C. SCUPPER</b>		 <b>Queensland Government</b> Department of Main Roads	
<b>DETAILS FOR CAST INSITU DECK</b>		Size A4	Drawing No
		Scales as shown	<b>1145</b> Date 8/02
		A	B
		C	D