

DETAIL 1
ASSEMBLY SEQUENCE FOR
TERMINAL PANEL AND EARTH

Refer Note 1

NOTES:

1. Ensure earth connection properly tightened before installing luminaire terminal panel.
2. Only 1 junction box per pit.
3. For poles on bridge refer Standard Drawing 1707.
4. For poles in median barrier refer Standard Drawing 1431.

ASSOCIATED DEPARTMENTAL DOCUMENTS:

Standard Drawings
 Specifications

REFERENCED DOCUMENTS:

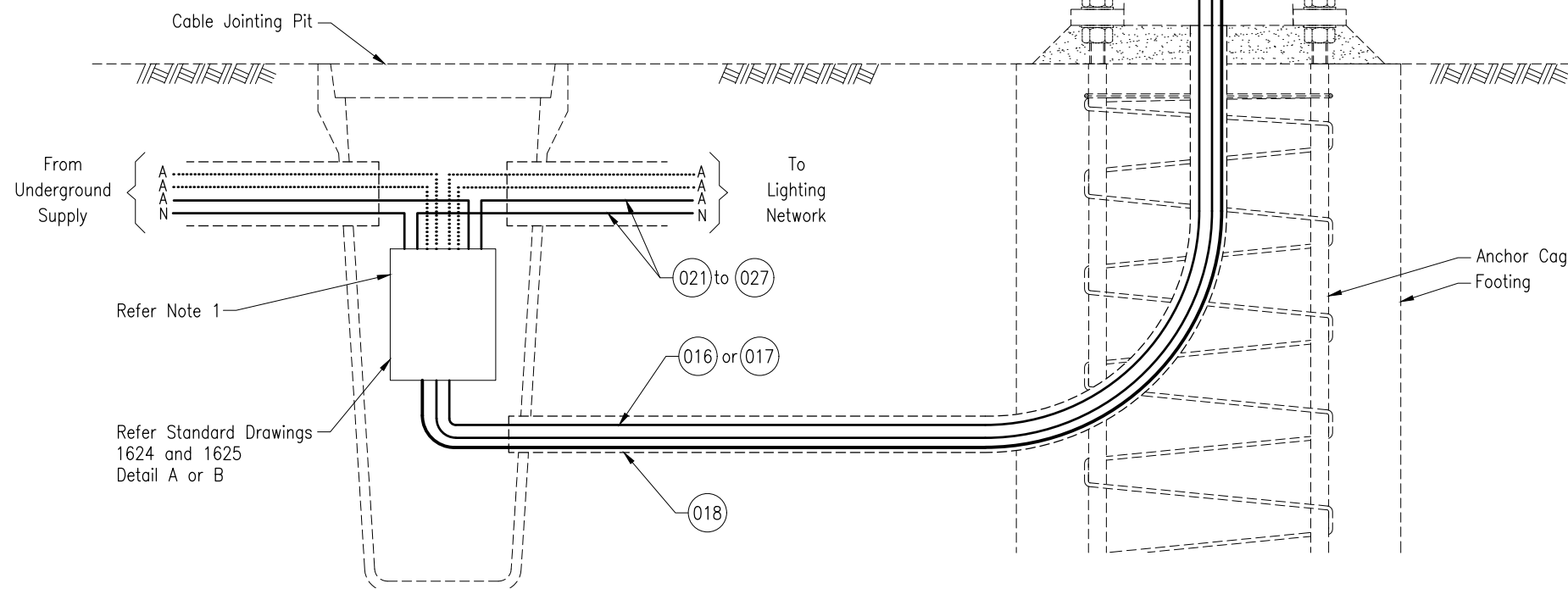
- Departmental Standard Drawings:
- 1323 Road Lighting – Luminaire Terminal Panel
 - 1431 Road Lighting – Base Plate Mounted Pole Wiring Details for Median Barriers
 - 1624 Road Lighting – Junction Box Single Phase Wiring Details
 - 1625 Road Lighting – Junction Box Three Phase Wiring Details
 - 1699 Traffic Signals/Road Lighting/ITS – Parts List
 - 1707 Road Lighting – Base Plate Mounted Pole Mounted on Bridges Wiring Details

Departmental Specifications:

MRTS228 Provision of Electrical Switchboards

Australian Standards:

AS/NZS 3000 Electrical Installations (Wiring Rules)



WIRING DETAILS
(DIAGRAMMATIC SKETCH ONLY)

⚠ INSTALLATION OF CONDUITS AND PITS IS THE RESPONSIBILITY OF THE LICENSED ELECTRICAL CONTRACTOR

Department of Transport and Main Roads		 <small>© The State of Queensland (Department of Transport and Main Roads) 2020 http://creativecommons.org/licenses/by/3.0/au</small>	
ROAD LIGHTING			
A3	Standard Drawing No		1399
Not to Scale	Date		3/2020
0	H		