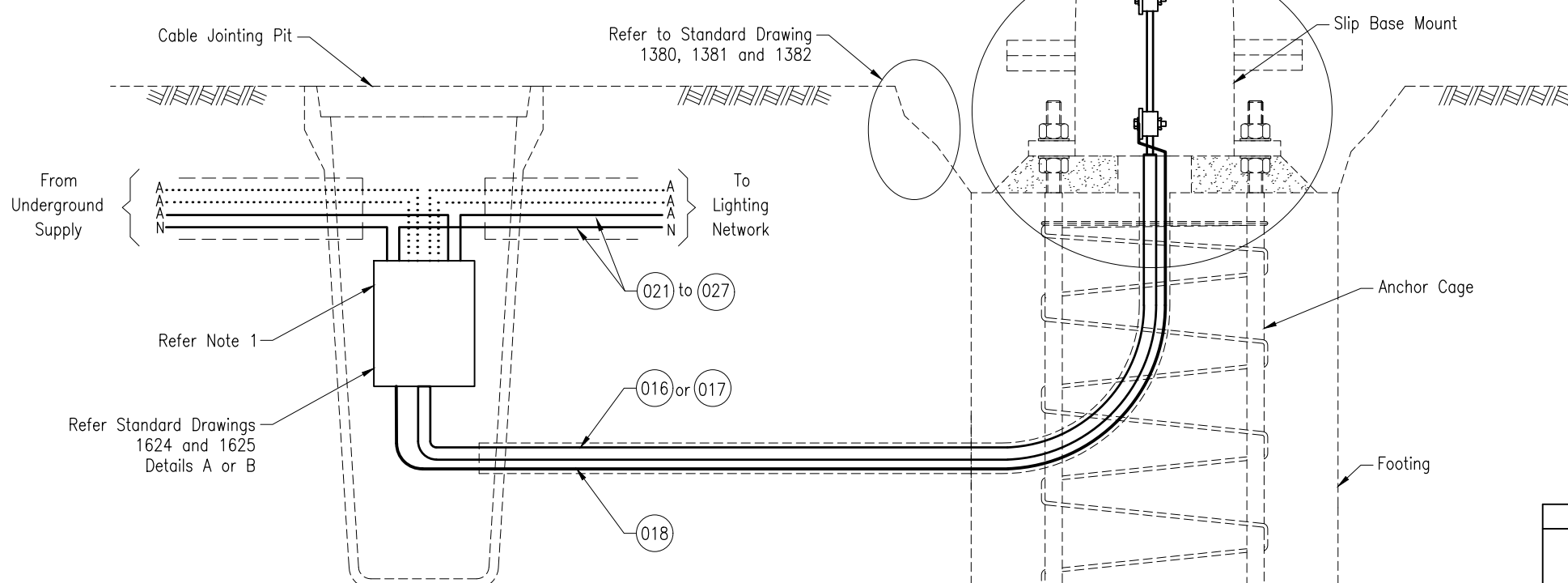


DETAIL B
RETROFIT TERMINAL
PANEL MOUNTING ARRANGEMENT

DETAIL A
STANDARD TERMINAL
PANEL MOUNTING ARRANGEMENT



WIRING DETAILS
(DIAGRAMMATIC SKETCH ONLY)

NOTES:

1. Only 1 junction box per pit.

ASSOCIATED DEPARTMENTAL DOCUMENTS:

Standard Drawings
Specifications

REFERENCED DOCUMENTS:

Departmental Standard Drawings:
1323 Road Lighting – Luminaire Terminal Panel
1389 Road Lighting – Slip Base Pole Male/Female Connectors Installation Details
1624 Road Lighting – Junction Box Single Phase Wiring Details
1625 Road Lighting – Junction Box Three Phase Wiring Details
1699 Traffic Signals/Road Lighting/ITS – Parts List

Departmental Specifications:

MRTS228 Electrical Switchboards
MRTS256 Power Cables

Australian Standards:

AS/NZS 3000 Electrical Installations (Wiring Rules)

INSTALLATION OF CONDUITS AND PITS IS THE RESPONSIBILITY OF THE LICENSED ELECTRICAL CONTRACTOR

Department of Transport and Main Roads				© The State of Queensland (Department of Transport and Main Roads) 2020 http://creativecommons.org/licenses/by/3.0/au	
ROAD LIGHTING				A3	Standard Drawing No
SLIP BASE POLE WIRING DETAILS		Not to Scale	1400		
		8	H	Date 3/2020	