

DETAIL 1

ASSEMBLY SEQUENCE FOR TERMINAL PANEL EARTH

Refer Notes 1 and 3

NOTES:

1. Ensure earth connection is properly tightened before installing luminaire terminal panel.
2. Approximately 20mm length of the booker rod should be screwed into the Mast Arm Earthing Pin.
3. Parts included with 524.
4. Only one Junction Box per pit.

ASSOCIATED DEPARTMENTAL DOCUMENTS:

Standard Drawings
Specifications

REFERENCED DOCUMENTS:

- Departmental Standard Drawings:
- 1411 Road Lighting – Mast Arm Road Lighting Junction Box (Type B)
 - 1413 Traffic Signals – Mast Arm Traffic Signal Junction Box (Type A)
 - 1414 Traffic Signals – Mast Arm Traffic Signal Junction Box (Type A) Wiring Details
- 1624 Road Lighting – Junction Box Single Phase Wiring Details
1625 Road Lighting – Junction Box Three Phase Wiring Details
1699 Traffic Signals/Road Lighting/ITS – Parts List

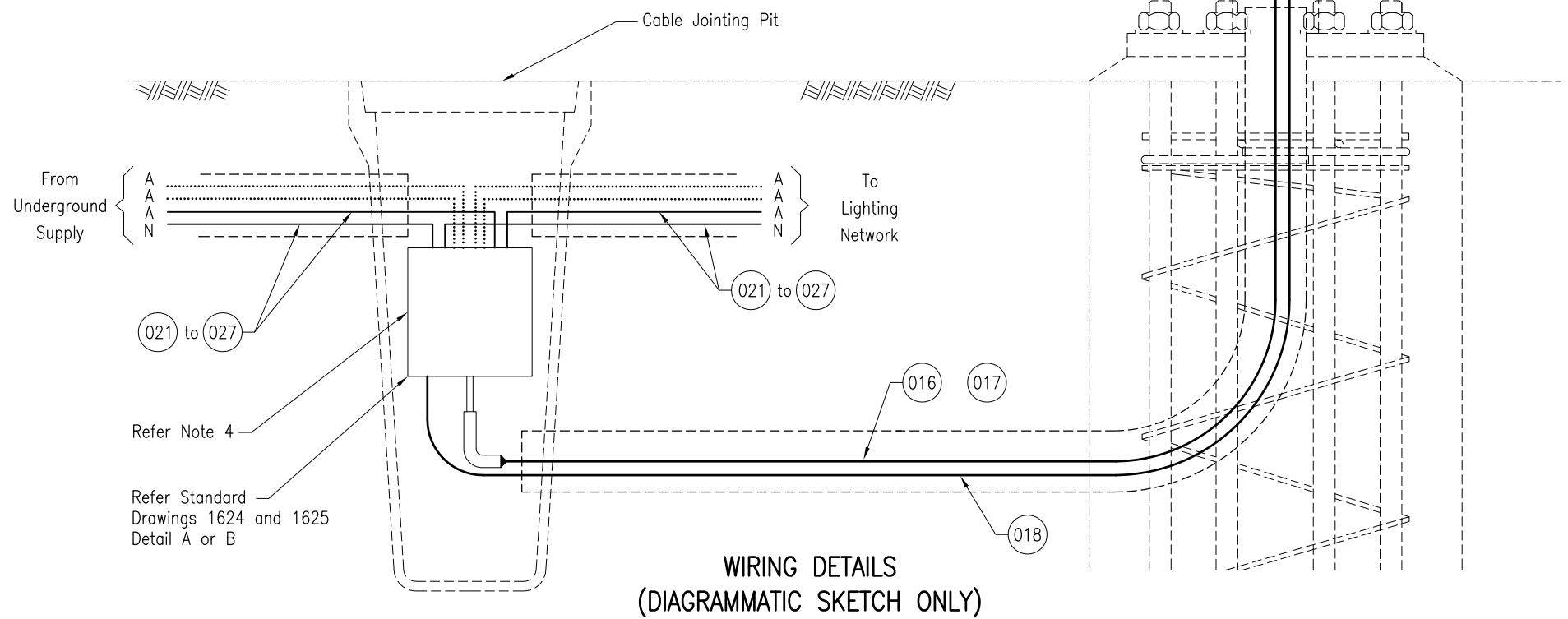
Departmental Specifications:

MRTS94 Road Lighting
MRTS228 Provision of Electrical Switchboards

Australian Standards:

AS/NZS 3000 Electrical Installations (Wiring Rules)

INSTALLATION OF CONDUITS AND PITS IS THE RESPONSIBILITY OF THE LICENSED ELECTRICAL CONTRACTOR



**WIRING DETAILS
(DIAGRAMMATIC SKETCH ONLY)**

Department of Transport and Main Roads		<p>© The State of Queensland (Department of Transport and Main Roads) 2015 http://creativecommons.org/licenses/by/3.0/au</p>	
ROAD LIGHTING			
MAST ARM ROAD LIGHTING JUNCTION BOX (TYPE B) WIRING DETAILS		A3	Standard Drawing No 1412
		Not to Scale	Date 4/15
		B	C D E F G H