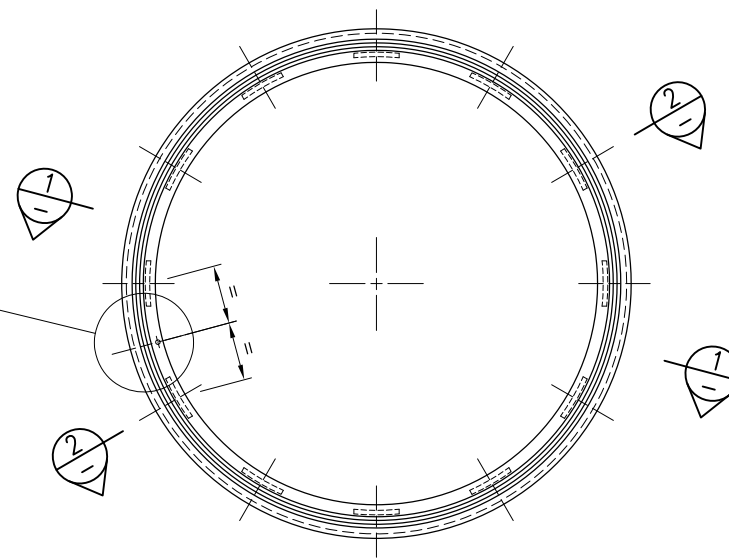
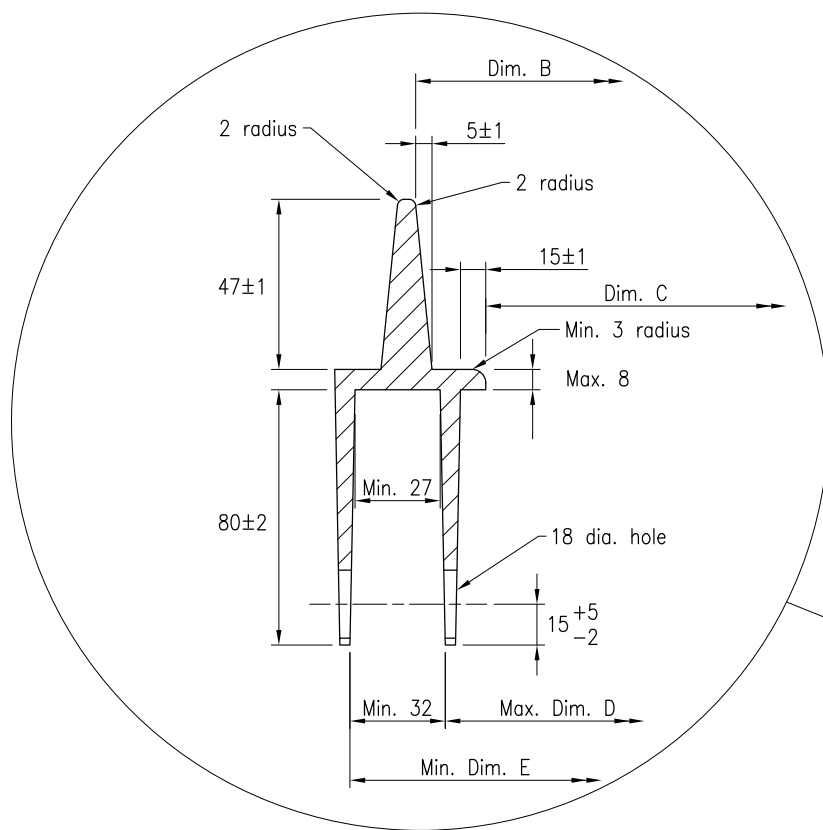


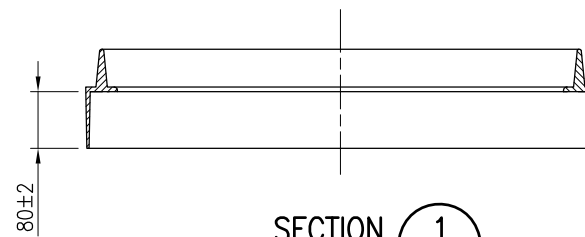
EARTHING HOLE DETAIL (1)



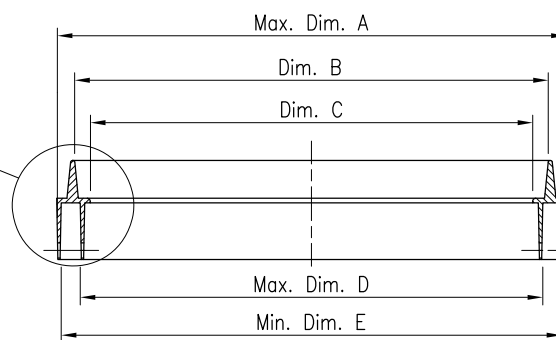
PLAN



LIP AND MOUNTING DETAIL (2)



SECTION 1 (1)



SECTION 2 (2)

12/18 dia. holes evenly spaced around circumference

Collar Dimensions

DIM	Type 60	Type 100
A	ø725	ø1125
B	ø656 ⁺¹ / ₋₂	ø1056 ⁺¹ / ₋₂
C	ø600 ±2	ø1000 ±2
D	ø645	ø1045
E	ø710	ø1110

NOTES:

1. Dimensional requirements of the finished product only. Manufacturer to determine material type and thickness to meet AS 3996 Class B design load and the requirements of MRTS91.
2. Collars are for circular pits that meet the requirements of MRTS91.
3. The collar shall be placed on the pit prior to compaction of the backfill material to prevent elongation of the top of the pit.
4. All edges shall be free of burrs and sharp edges.
5. The total collar lifting mass shall be less than 40kg.
6. 12 galvanised cuphead M16 bolts with washers to fit shall be supplied fitted to each collar. All nuts are to be galvanised and secured to the bolts on the outside of the collar.
7. A bituminous coating shall be applied to the collar to prevent surface corrosion.
8. The permanent identifying label attached to an inside lug of each collar shall state "[Manufacturer's Name]", "Date of Manufacture [(month/year)]", "[Weight of the product] kg-2 person lift".
9. Earthing of the collar (where specified) shall be via an earth lug bolted through the 6mm countersunk hole provided in the inner lip of the collar. Refer Detail 1. The hole shall be countersunk PRIOR to application of the bituminous coating.
10. Background details omitted for clarity.
11. Dimensions are in millimetres unless shown otherwise.

ASSOCIATED DEPARTMENTAL DOCUMENTS:

Specifications
Standard Drawings

REFERENCED DOCUMENTS:

Departmental Specifications:
MRTS91 Conduits and Pits

Australian Standards:

AS 3996 Access Covers and Grates

Department of Transport and Main Roads		 <small>© The State of Queensland (Department of Transport and Main Roads) 2021 https://creativecommons.org/licenses/by/4.0/</small>	
TRAFFIC SIGNALS/ROAD LIGHTING			
COLLAR FOR CIRCULAR CABLE JOINTING PIT		A3	Standard Drawing No
		Not to Scale	1416
			Date 3/2021
A	B	C	D
E	F		