

DETAIL 1
ASSEMBLY SEQUENCE FOR TERMINAL PANEL AND EARTH
 (Refer Note 1)

NOTES:

1. Ensure earth connection properly tightened before installing luminaire terminal panel.
2. Provide 1000mm length of slack in both ends of submains cable in barrier void so junction box can be easily removed for maintenance.
3. For Poles on bridges refer Standard Drawing 1707.

ASSOCIATED DEPARTMENTAL DOCUMENTS:

Standard Drawings
 Specifications

REFERENCED DOCUMENTS:

- Departmental Standard Drawings:
- 1323 Road Lighting – Luminaire Terminal Panel
 - 1395 Road Lighting – Base Plate Mounted Pole and Footing in Concrete Median Barrier Installation Details
 - 1624 Road Lighting – Junction Box Single Phase Wiring Details
 - 1625 Road Lighting – Junction Box Three Phase Box Wiring Details
 - 1699 Traffic Signals/Road Lighting/ITS – Parts List
 - 1707 Road Lighting – Base Plate Mounted Pole Mounted on Bridges Wiring Details

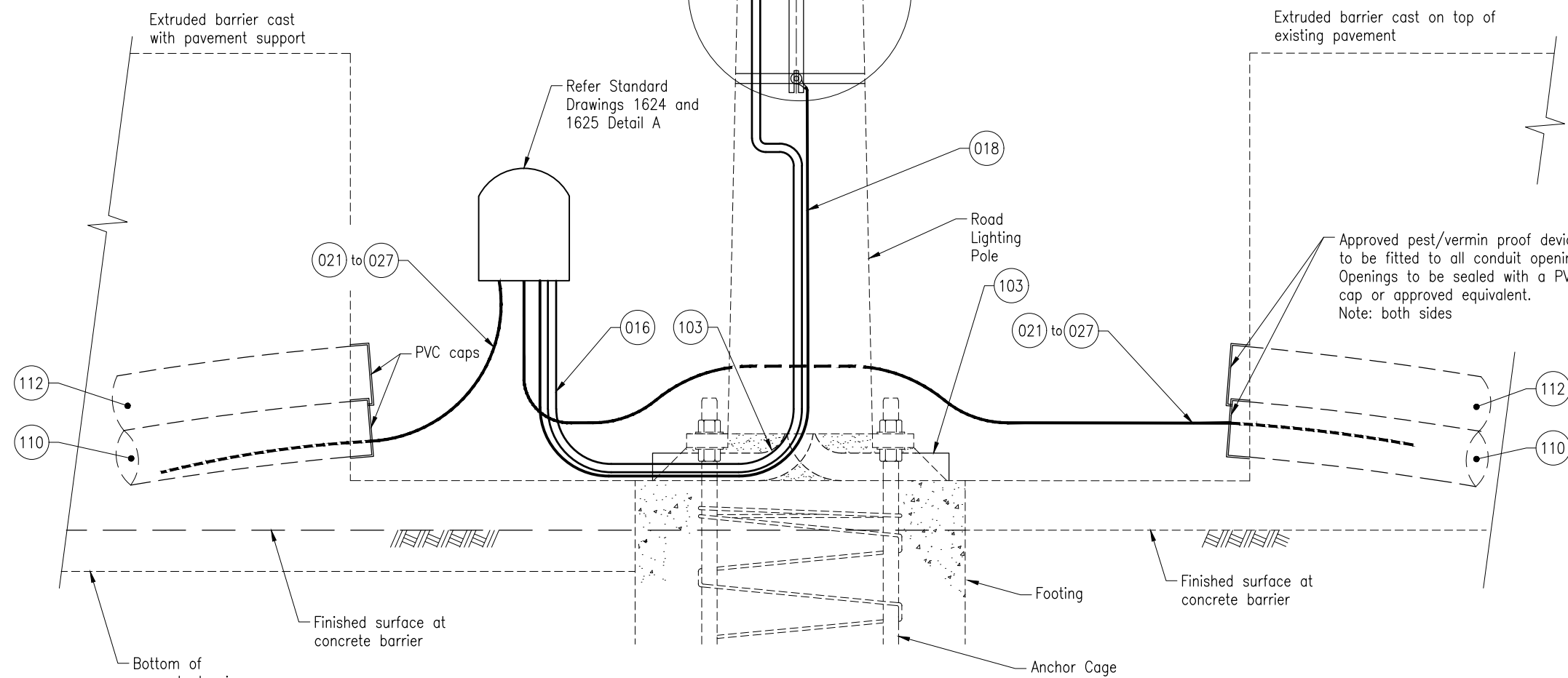
Departmental Specifications:

- MRTS91 Conduits and Pits
- MRTS94 Road Lighting
- MRTS228 Provision of Electrical Switchboards
- MRTS256 Power Cables

Australian Standards:

AS/NZS 3000 Electrical Installations (Wiring Rules)

INSTALLATION OF CONDUITS AND PITS IS THE RESPONSIBILITY OF THE LICENSED ELECTRICAL CONTRACTOR



WIRING DETAILS
(DIAGRAMMATIC SKETCH ONLY)

Department of Transport and Main Roads			
ROAD LIGHTING			
BASE PLATE MOUNTED POLE WIRING DETAILS FOR MEDIAN BARRIERS		A3 Not to Scale	Standard Drawing No 1431 Date 3/2020
A	B	C	D
E	F		