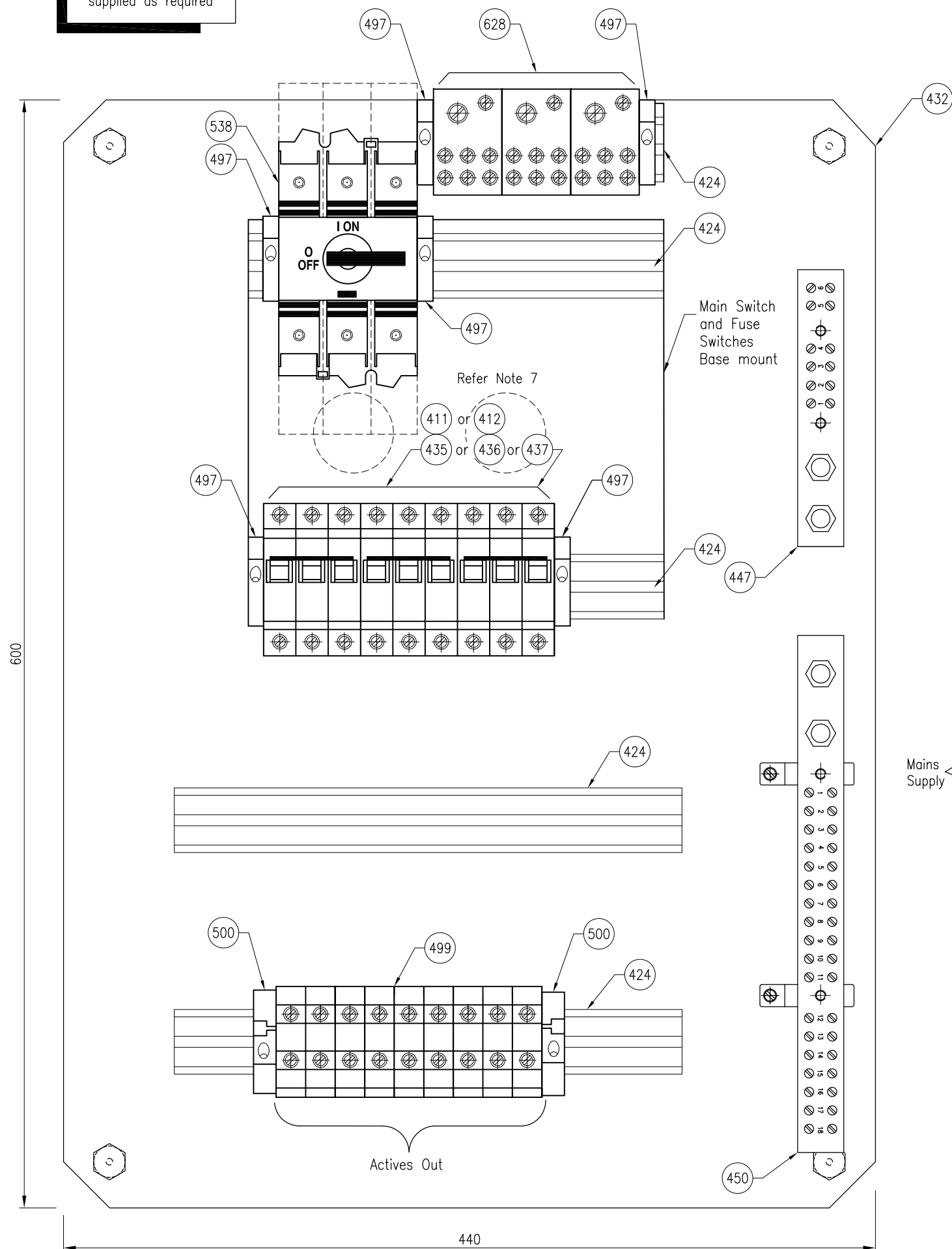
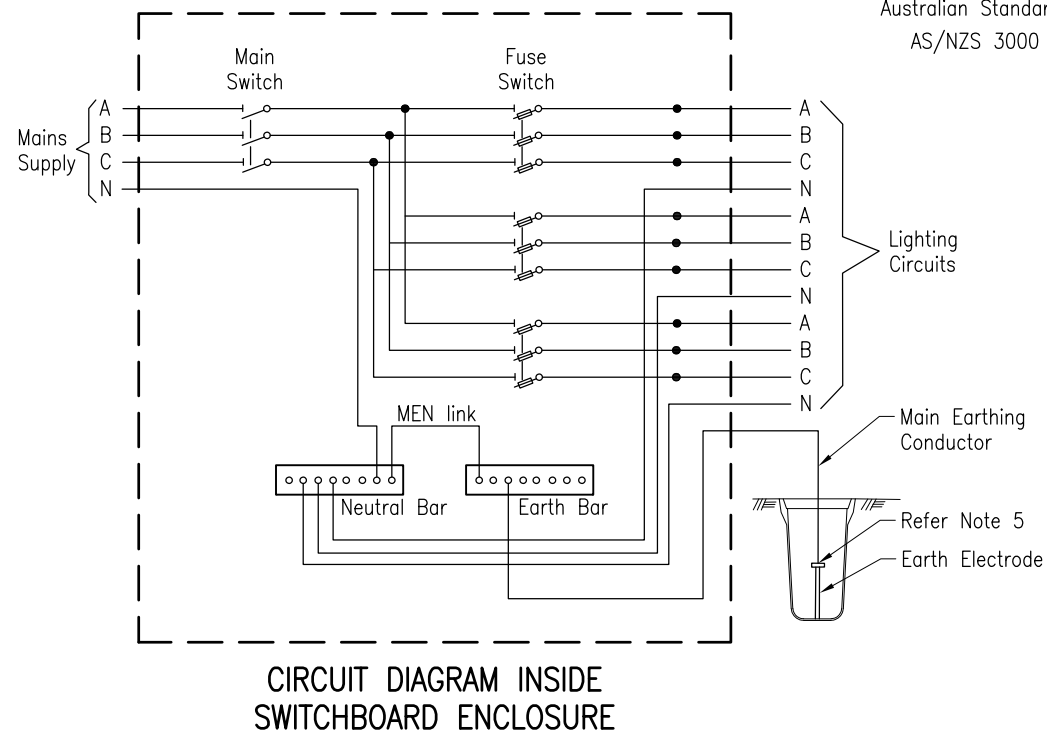


Mounting fasteners to be supplied as required



SWITCHBOARD LAYOUT



CIRCUIT DIAGRAM INSIDE SWITCHBOARD ENCLOSURE

NOTES:

1. (545) miniature photocell is installed in the top of the enclosure housing the (432) mounting plate. Refer Standard Drawing 1627.
2. Label circuits and terminals appropriately.
3. Refer (558) for switchboard assembly.
4. Install panel into enclosure.
5. Permanently label item (538) as "Main Switch".
6. Fix permanent label to item (415) with "Night" up "Day" down.
7. Attach a permanent label to the connection of the main earthing conductor to the earth electrode stating:
"Warning: Main electrical earthing conductor DO NOT DISCONNECT".
8. Dimensions are in millimetres unless shown otherwise.
9. 2 x 50mm dia holes for cables to connector blocks.

ASSOCIATED DEPARTMENTAL DOCUMENTS:

- Standard Drawings
- Specifications
- Electrical Design Manual for Roadside Devices Part 3, TRUM Vol 4.

REFERENCED DOCUMENTS:

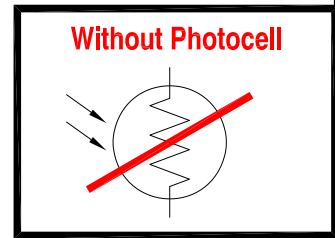
- Departmental Standard Drawings:
- 1627 Road Lighting – Switchboard Top Mounted
 - 1686 Road lighting – Switchboard Assembly Details
 - 1687 Road lighting – Metered Switchboard Assembly Details Single Phase
 - 1688 Road lighting – Metered Switchboard Assembly Details Three Phase
 - 1690 ITS – Switchboard Assembly Details CCTV
 - 1699 Traffic Signals/Road Lighting/ITS – Parts List

Departmental Standard Specifications:

- MRTS228 Electrical Switchboards
- MRTS210 Provision of Mains Power
- MRTS256 Power Cables

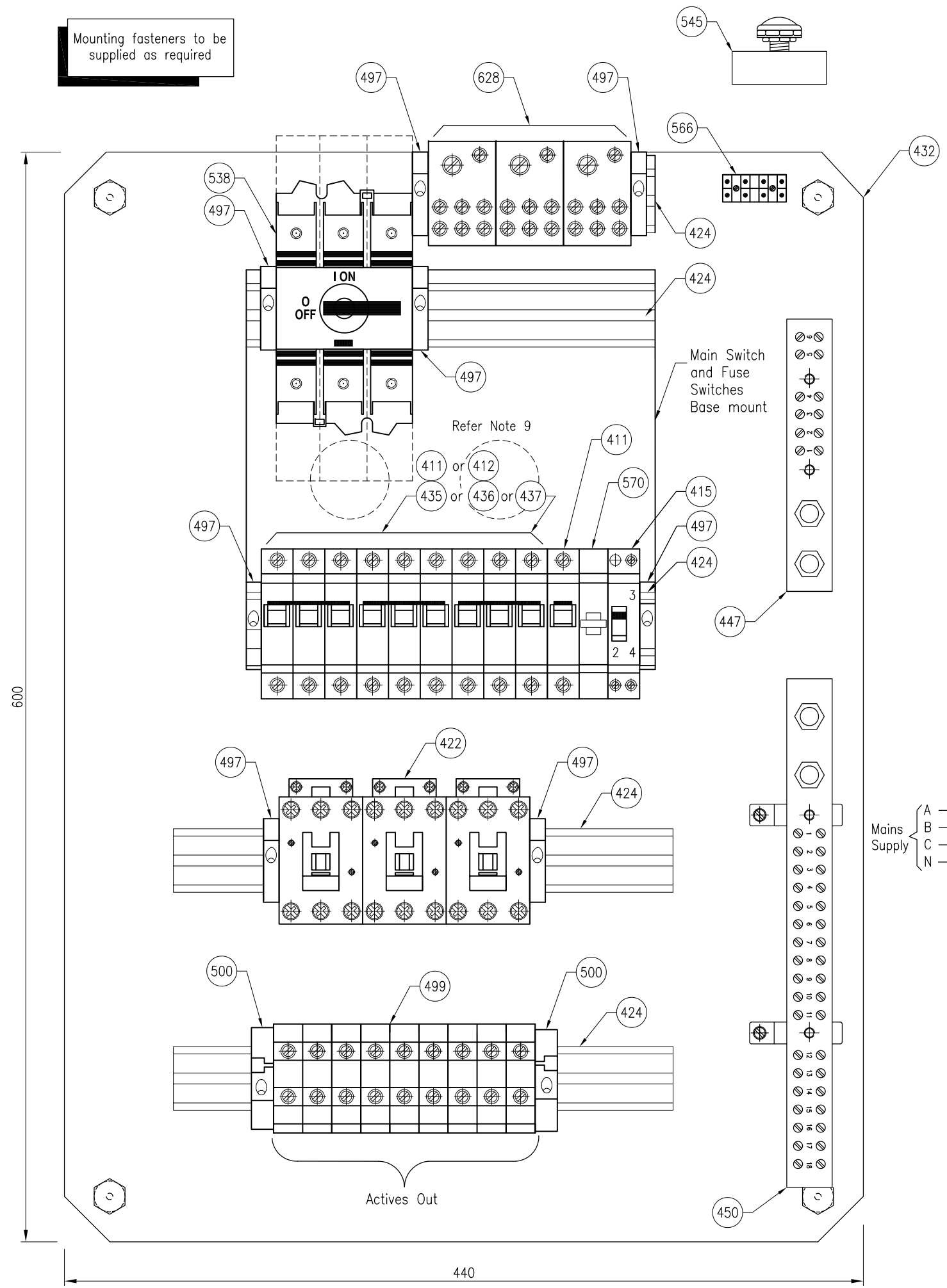
Australian Standards:

- AS/NZS 3000 Electrical Installations (Wiring Rules)



Department of Transport and Main Roads			
ROAD LIGHTING			
SWITCHBOARD TYPICAL LAYOUT AND CIRCUIT DIAGRAM MEN SYSTEM SHEET 1 OF 2 (WITHOUT PHOTOELECTRIC CELL)		A3	Standard Drawing No
		Not to Scale	1623
			Date 3/2021

Mounting fasteners to be supplied as required



SWITCHBOARD LAYOUT

NOTES:

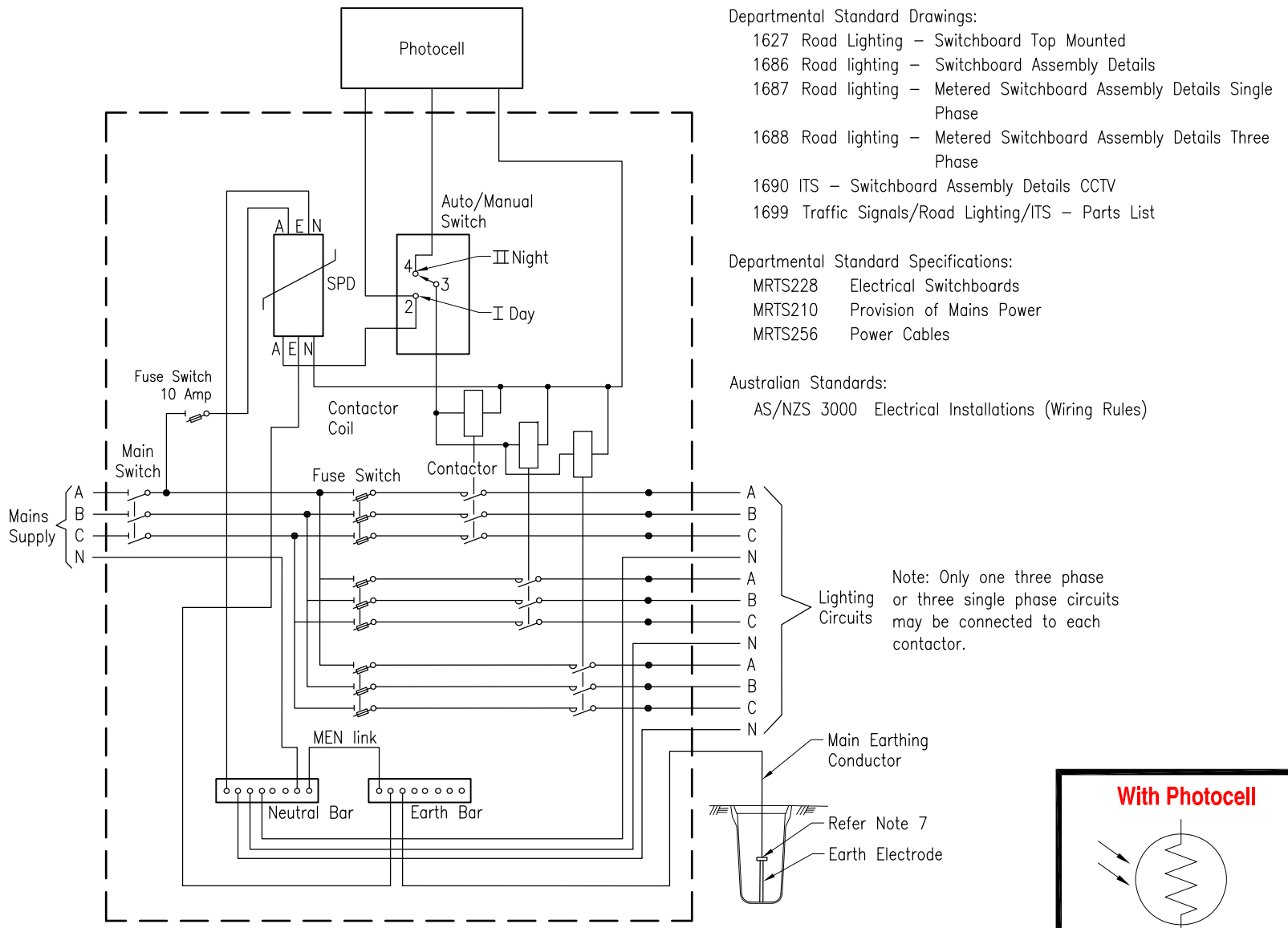
1. (545) miniature photocell is installed in the top of the enclosure housing the (432) mounting plate. Refer Standard Drawing 1627.
2. Label circuits and terminals appropriately.
3. Refer (558) for switchboard assembly.
4. Install panel into enclosure.
5. Permanently label item (538) as "Main Switch".
6. Fix permanent label to item (415) with "Night" up "Day" down.
7. Attach a permanent label to the connection of the main earthing conductor to the earth electrode stating: "Warning: Main electrical earthing conductor DO NOT DISCONNECT".
8. Dimensions are in millimetres unless shown otherwise.
9. 2 x 50mm dia holes for cables to connector blocks.

ASSOCIATED DEPARTMENTAL DOCUMENTS:
 Standard Drawings
 Specifications
 Electrical Design Manual for Roadside Devices Part 3, TRUM Vol 4.

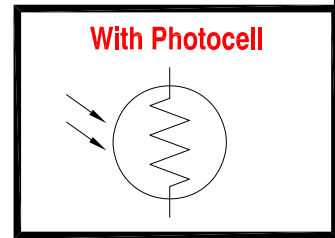
REFERENCED DOCUMENTS:
 Departmental Standard Drawings:
 1627 Road Lighting – Switchboard Top Mounted
 1686 Road lighting – Switchboard Assembly Details
 1687 Road lighting – Metered Switchboard Assembly Details Single Phase
 1688 Road lighting – Metered Switchboard Assembly Details Three Phase
 1690 ITS – Switchboard Assembly Details CCTV
 1699 Traffic Signals/Road Lighting/ITS – Parts List

Departmental Standard Specifications:
 MRTS228 Electrical Switchboards
 MRTS210 Provision of Mains Power
 MRTS256 Power Cables

Australian Standards:
 AS/NZS 3000 Electrical Installations (Wiring Rules)



CIRCUIT DIAGRAM INSIDE SWITCHBOARD ENCLOSURE



Department of Transport and Main Roads			
ROAD LIGHTING			
SWITCHBOARD TYPICAL LAYOUT AND CIRCUIT DIAGRAM MEN SYSTEM		A3	Standard Drawing No
SHEET 2 OF 2		Not to Scale	1623
(WITH PHOTOELECTRIC CELL)			Date 3/2021