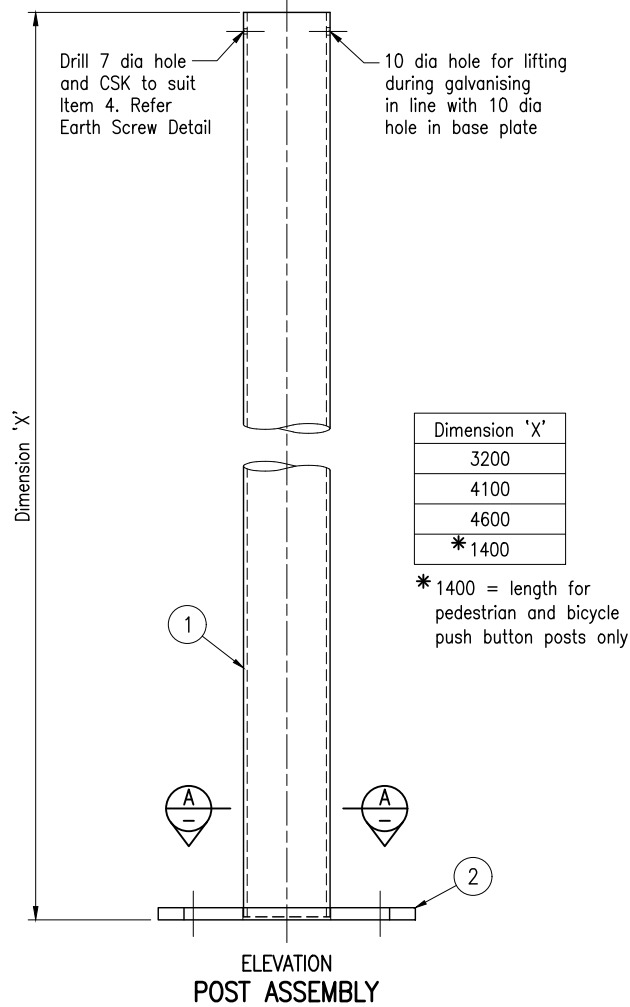
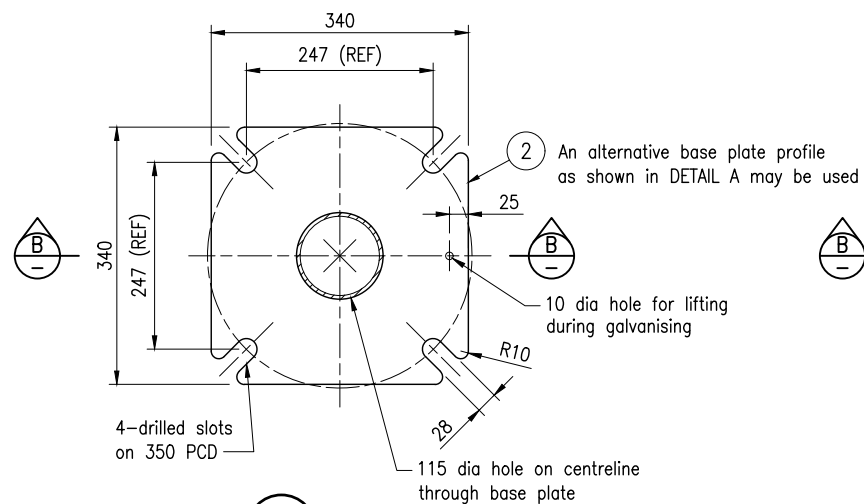


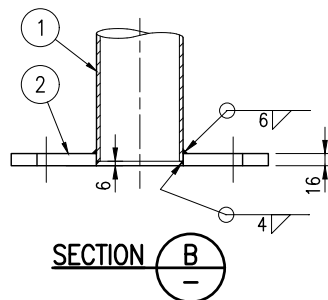
ELEVATION
PEDESTRIAN PUSH BUTTON POST



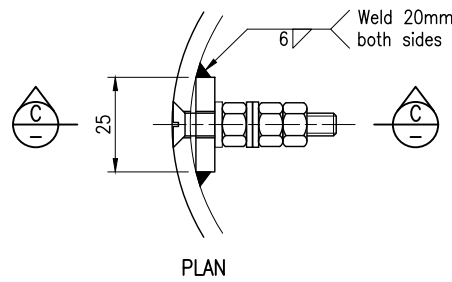
ELEVATION
POST ASSEMBLY



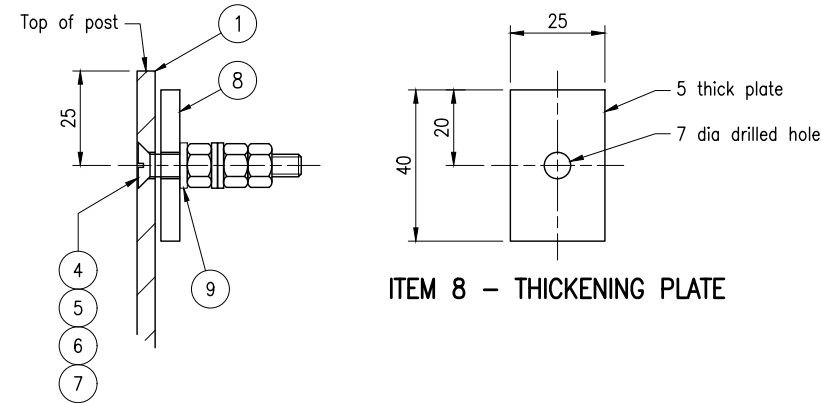
SECTION A
ITEM 2 - BASE PLATE



SECTION B

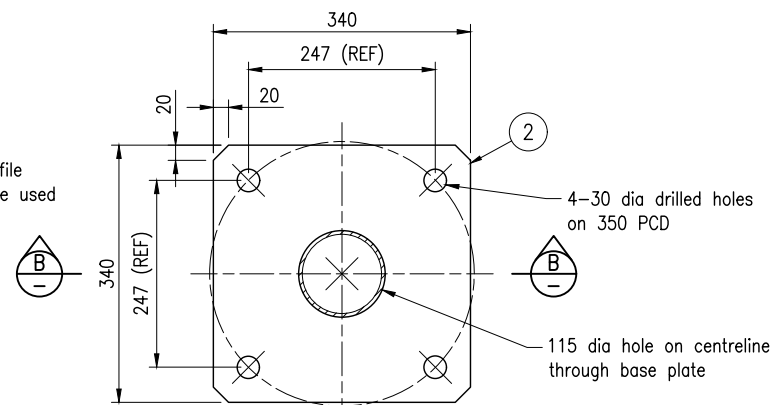


PLAN



ITEM 8 - THICKENING PLATE

SECTION C
EARTH SCREW DETAIL



SECTION A
ITEM 2 - BASE PLATE
ALTERNATIVE PROFILE

MATERIAL LIST

ITEM No	No OFF	ITEM DESCRIPTION	MATERIAL DESCRIPTION	LENGTH	GRADE
1	1	Post	114.3 x 4.5 CHS	Dim 'X'	C250L0
2	1	Base plate	16 thick plate	-	250
3	1	Dome	3 thick plate	114.3 dia	250
4	1	Earth screw	CSK slot machine screw M6	40	316/A4 SS
5	1	Stainless steel standard hex nut	Hex nut M6	-	304/A2 SS
6	2	Stainless steel flat round washer	To suit M6 screw	-	304/A2 SS
7	2	Stainless steel lock nut hex	Lock nut hex M6	-	304/A2 SS
8	1	Thickening plate	25 x 5 thick flat bar	40	300
9	1	Isolation washer	Neoprene or nylon	-	-

The purpose of This Standard Drawing is to provide typical standard details. The base mounted traffic signals post details in this drawing are designed to AS 2339 (1997). At this time, this drawing does not detail base mounted traffic signals post to AS 2339 (2017). This drawing shall be updated after the details are reviewed for compliance to AS 2339 (2017).

NOTES:

- SCOPE: This Standard Drawing provides typical assembly and fabrication details of the base mounted traffic signals post accordance with MRTS97 and to AS 2339. This drawing supersedes TMR fabrication drawing 316055.
- STEELWORK shall be fabricated to the requirements of MRTS78 and in accordance with AS 4100.
Steel grades are as noted in Material List.
CHS to AS/NZS 1163.
Steel plate to AS/NZS 3678.
Flat bar to AS/NZS 3679.1.
All holes shall be drilled or laser cut, ground smooth around edges.
All welds shall be completed prior to hot dip galvanising.
All steelwork shall be hot dip galvanised to AS/NZS 4680.
Prior to galvanising all weld splatter and welding slag is to be removed.
- STAINLESS STEEL screws, nuts and washers shall be supplied in accordance with MRTS78A and conform to the requirements of ISO 3506-1.
Stainless Steel grades are as noted in Material List.
- Item '3' Dome is required for 1400 length push button post only.
- WELDING symbols conform to AS 1101.3.
All welding to AS/NZS 1554.1.
All welds except location tack welds to be SP category.
Welding consumables to be controlled hydrogen type:
G493 to AS/NZS ISO 14341-B or T493 to AS/NZS ISO 17632-B.
- DIMENSIONS are in millimetres.

REFERENCED DOCUMENTS:

- Departmental Standard Drawings:
1420 Traffic Signals - General Arrangements
- Departmental Specifications:
MRTS78 Fabrication of Structural Steelwork
MRTS78A Fabrication of Structural Stainless Steelwork
MRTS97 Mounting Structures for Roadside Equipment

Department of Transport and Main Roads				© The State of Queensland (Department of Transport and Main Roads) 2020 http://creativecommons.org/licenses/by/4.0/au
TRAFFIC SIGNALS				
BASE MOUNTED TRAFFIC SIGNALS POST - ASSEMBLY AND DETAILS		A3	Standard Drawing No	1721
		Not to Scale	Date	7/2020
		A	B	