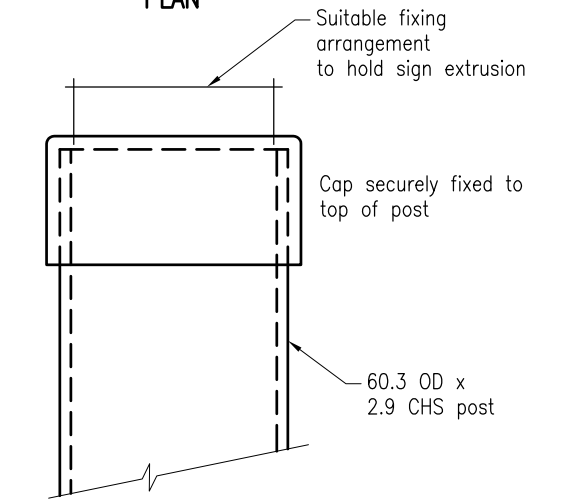
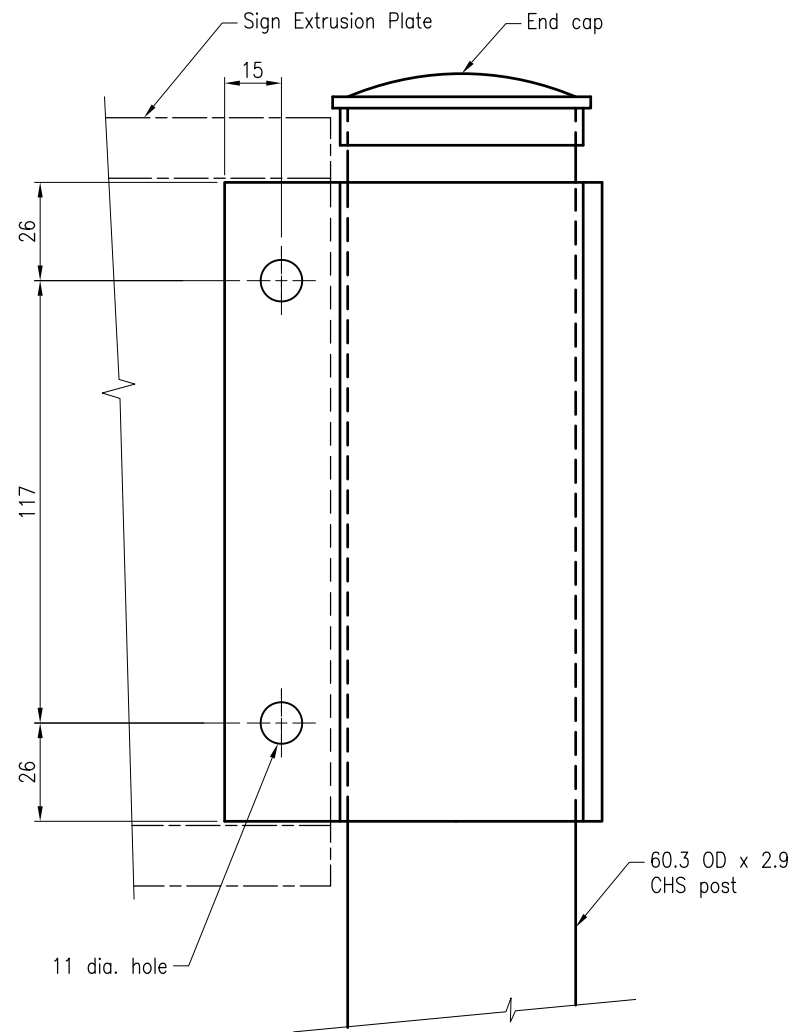


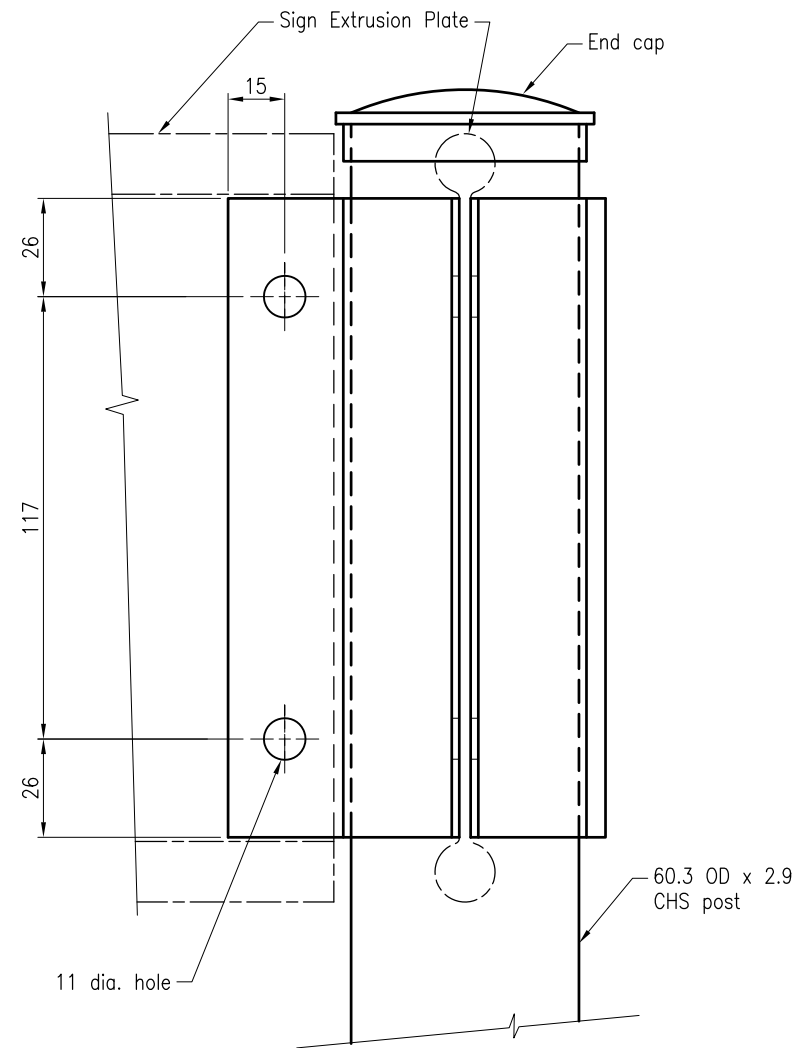
PLAN



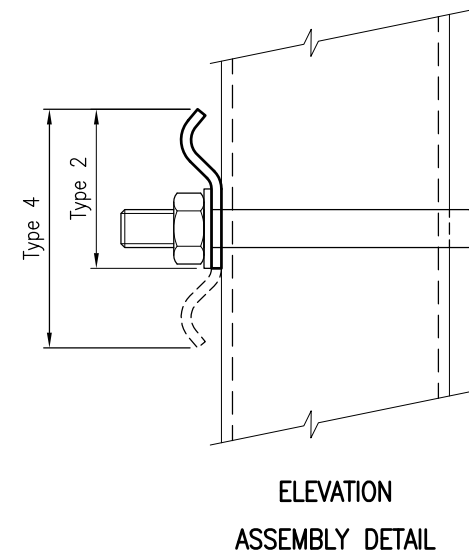
ELEVATION  
TYPE 3



ELEVATION  
TYPE 1



ELEVATION  
TYPE 5



ELEVATION  
ASSEMBLY DETAIL

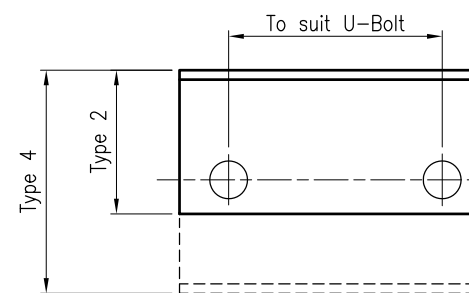


PLATE DETAIL  
(Shape to suit and hold  
sign extrusion firmly)  
TYPE 2 and 4

**NOTES:**

1. Circular hollow sections (CHS) to be grade C350L0 to AS/NZS 1163 unless noted otherwise.
2. Bolts, Nuts, and washers to be hot-dip galvanised to AS/NZS 1214.
3. All Steelwork and Fittings to be hot-dip galvanised to AS/NZS 4680.
4. Dimensions are in millimeters, unless shown otherwise.

**ASSOCIATED DEPARTMENTAL DOCUMENTS:**

Standard Drawings  
Specifications

**REFERENCED DOCUMENTS:**



Departmental Standard Drawings:  
1291 Sign - Guide Sign - Finger Board, Geographical Feature and Street Name Signs Extrusion Detail

**Departmental Specifications:**

MRST14 Road Furniture  
MRTS78 Fabrication of Structural Steelwork

**Australian Standards:**

AS/NZS 1163 Cold-Formed Structural Steel Hollow Sections  
AS1214 Hot-Dip Galvanised Coatings on Threaded Fasteners (ISO metric course thread series)  
AS/NZS 4680 Hot-Dip Galvanised (zinc) Coatings on Fabricated Ferrous Articles

Department of Transport and Main Roads		 © The State of Queensland (Department of Transport and Main Roads) 2014 <a href="http://creativecommons.org/licenses/by/3.0/au">http://creativecommons.org/licenses/by/3.0/au</a>	
SIGN			
FINGERBOARD, GEOGRAPHICAL FEATURE AND STREET NAME SIGN BRACKET DETAILS		A3	Standard Drawing No
		Not to Scale	1295
			Date 6/14
A	B	C	D