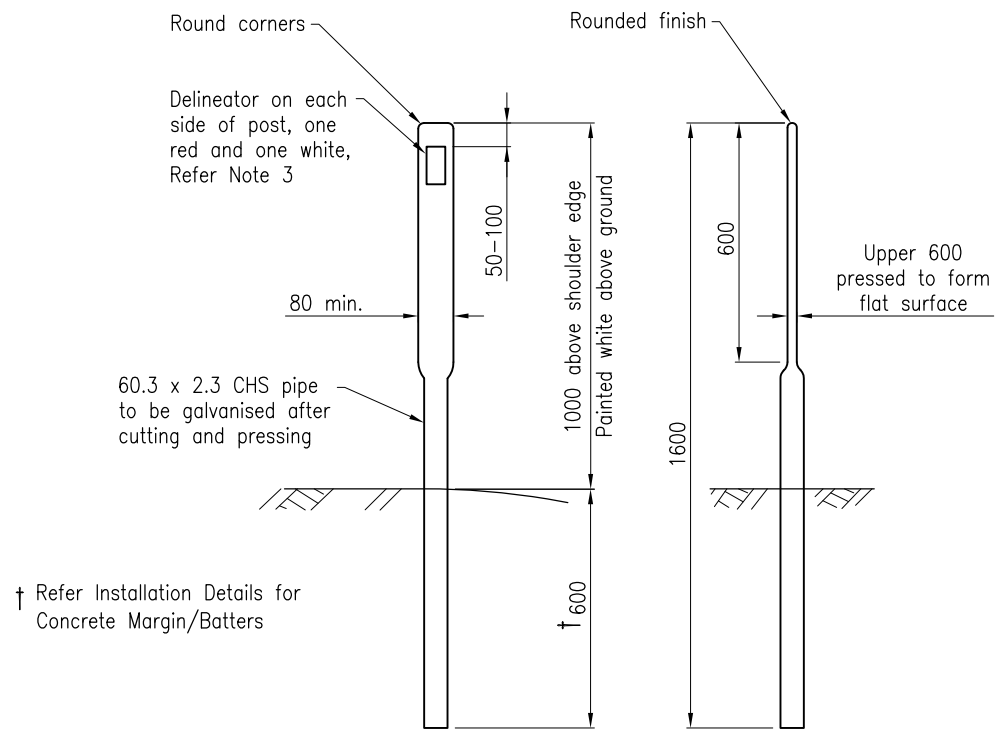


TIMBER

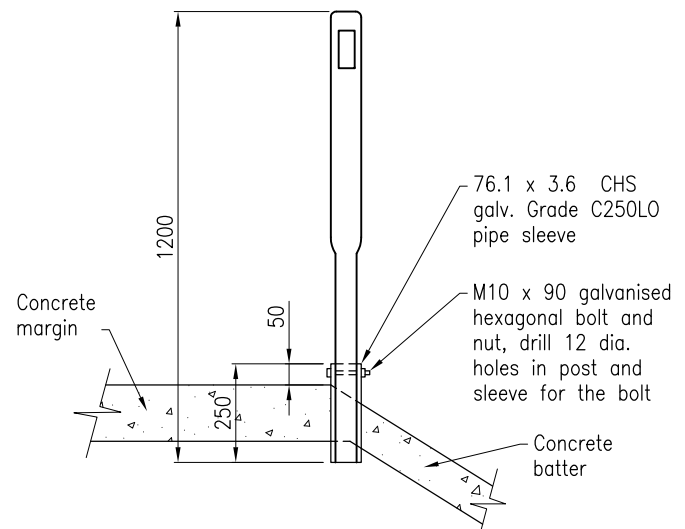


TUBULAR STEEL

**ROAD EDGE GUIDE POSTS**  
Floodways – refer note 6

† Refer Installation Details for Concrete Margin/Batters

Post Length  
Post lengths are to be increased when placed beyond the formation edge to allow for slope.



**INSTALLATION DETAILS FOR CONCRETE MARGINS/BATTERS**

**NOTES:**

- Road Edge Guide Posts to be timber, CHS steel on any departmental compliant product installed in accordance with the manufacturer's specification.
- Road Edge Guide Posts, in addition to the requirements as shown in this drawing, are to comply with the requirements specified in MRTS14.
- Delineators to comply with the requirements specified in MRTS14.
- Siting, Alignment and spacing to be as detailed in the Manual of Uniform Traffic Control Devices (Part 2 – Section 4.2.4) unless specified otherwise in the Contract.
- CHS posts and sleeves to be hot dipped galvanized, subsequent to fabrication, to AS/NZS 4680.
- Floodways – Spacing to be 25m, with the posts in pairs. Guide posts installed on floodways to be Tubular Steel.
- Dimensions are in millimetres unless shown otherwise.

**ASSOCIATED DEPARTMENTAL DOCUMENTS:**

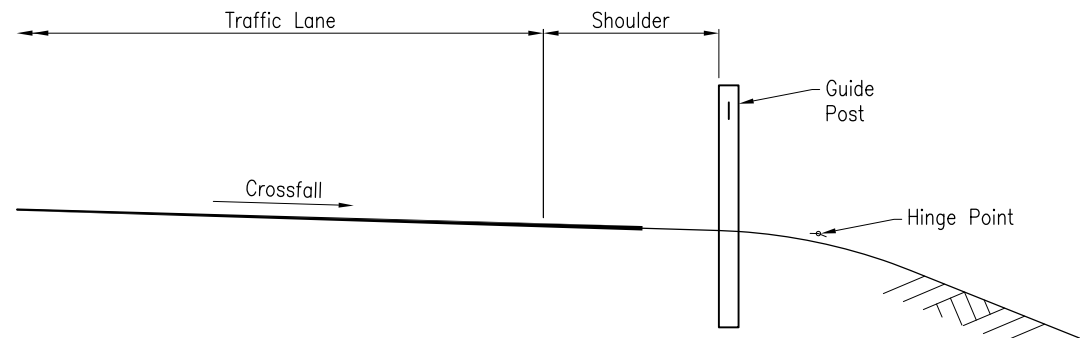
- Standard Drawings Specifications
- Manual of Uniform Traffic Control Devices (MUTCD)

**REFERENCED DOCUMENTS:**

- Departmental Specifications: MRTS14 Road Furniture

**Australian Standards:**

- AS/NZS 1163 Cold-Formed Structural Steel Hollow Sections
- AS/NZS 1552 Hot-dip galvanized steel bolts with associated nuts and washers for structural engineering
- AS/NZS 1906.2 Retroreflective materials and devices for road traffic control purposes – Retroreflective devices (non – pavement application)
- AS/NZS 4680 Hot-dip Galvanized (Zinc) Coatings on Fabricated Ferrous Articles



**INSTALLATION DETAILS FOR STANDARD ROADWAY**

Inside face of post to be set beyond the shoulder edge, but within the verge width.

**Installation variations:-**

- Low lengths of embankment
- Inside face of post to be generally beyond the shoulder edge
- Culvert/Bridges
- Where culvert headwall is at or inside the hinge point, provide REGP's. Inside face of post to be generally beyond the shoulder edge but always be in line with the adjacent culvert headwall.
- Where the culvert headwall is outside the hinge point, REGP's are not required.
- Post Length
- Post lengths are to be increased when placed beyond the formation edge to allow for slope.

Department of Transport and Main Roads			
ROAD EDGE GUIDE POSTS			
POST AND INSTALLATION DETAILS	A3	Standard Drawing No	
	Not to Scale	1356	
		Date 7/19	
A	B	C	D