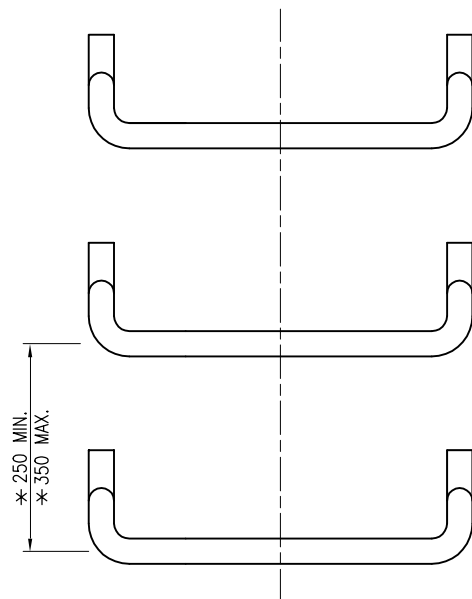
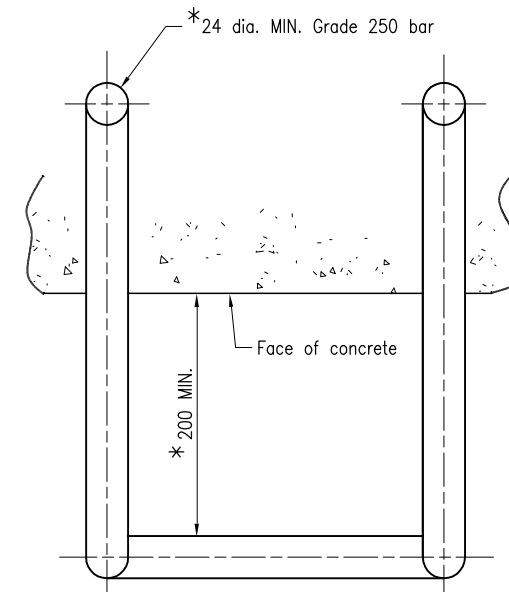


PLAN

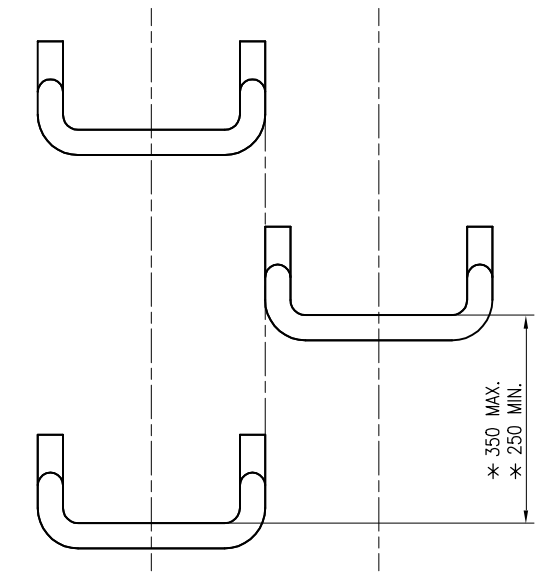


ELEVATION

TYPE 1 - RUNG LAYOUT

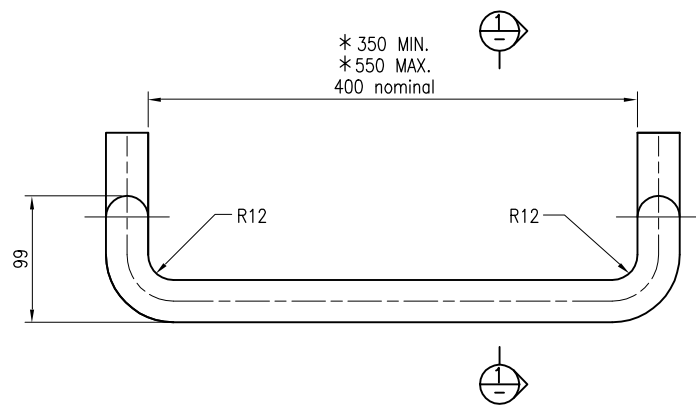


PLAN



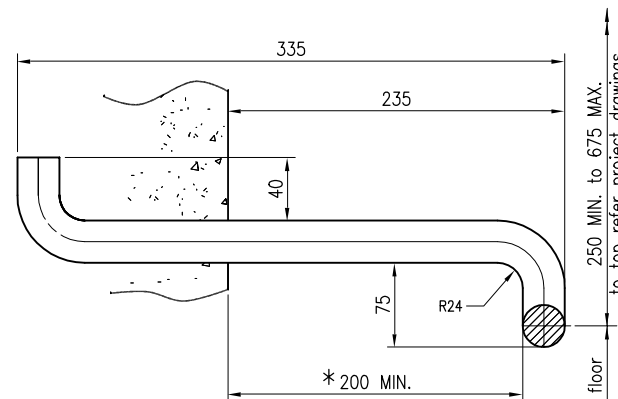
ELEVATION

TYPE 2 - RUNG LAYOUT

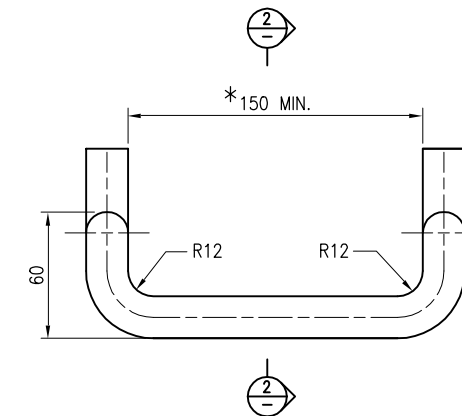


ELEVATION

TYPE 1 - INDIVIDUAL RUNGS

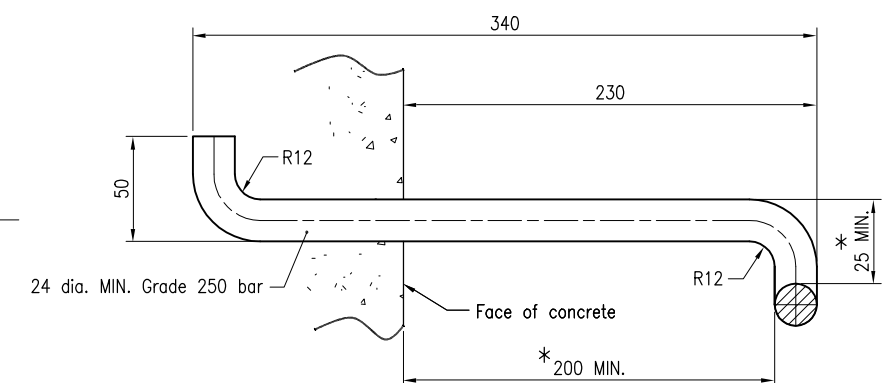


SECTION 1

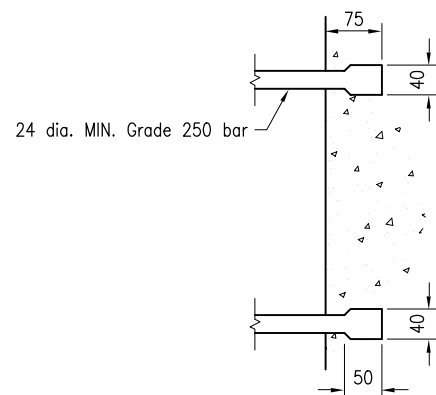


ELEVATION

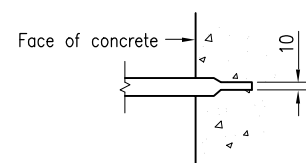
TYPE 2 - INDIVIDUAL RUNGS WITH COPLANAR RUNGS



SECTION 2



PLAN



ELEVATION

ANCHOR DETAIL FOR EPOXIED STEP IRONS

Thickness of epoxy shall be 2mm all around the step iron anchor and 5mm at the back of the step iron anchor

\* denotes MIN. and MAX dimensions in AS 1657

NOTES :

1. STEEL Grade 250 bar to AS/NZS 3679.1, hot dip galvanised to AS/NZS 4680 after bending.
2. ALTERNATIVE STEP IRONS complying with AS 1657 may be used.
3. STEP IRONS may be set in approved epoxy compound.
4. DIMENSIONS are in millimetres unless shown otherwise.

ASSOCIATED DOCUMENTS :  
 Department of Main Roads Manual of Standard Drawings Roads  
 Department of Main Roads Manual of Standard Specification Roads  
 REFERENCED DOCUMENTS :  
 Standard Drawings :  
 1307 Access Chamber - Details 1050 to 2100 dia.  
 Standard Specifications :  
 Drainage, Retaining Structures and Protective Treatments  
 Australian Standards :  
 AS 1657 Fixed Platforms, Walkways, Stairways and Ladders - Design, Construction and Installation

ACCESS CHAMBER		
STEP IRONS	Size A3	Drawing No
	Scales as shown	1441 Date 5/99

1441