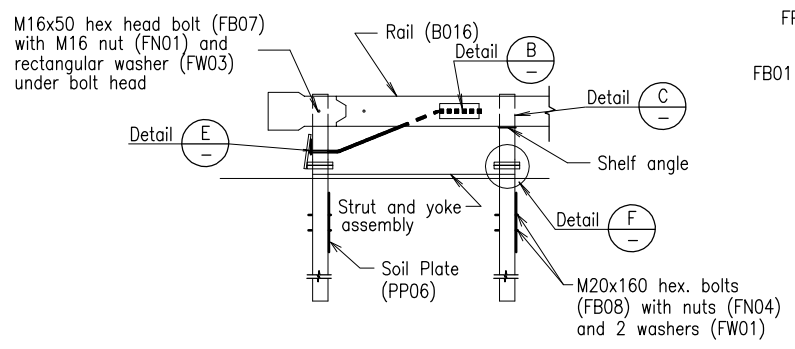
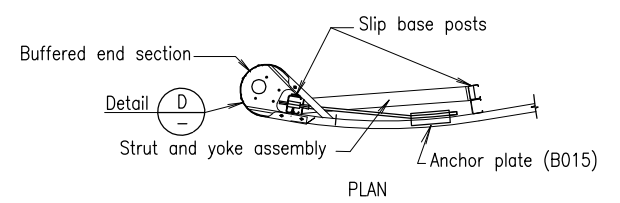
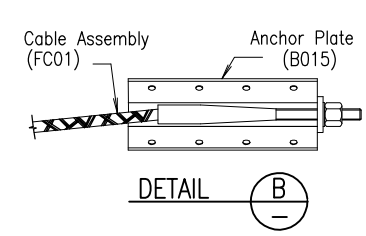
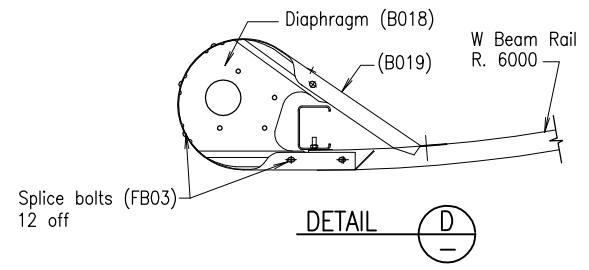


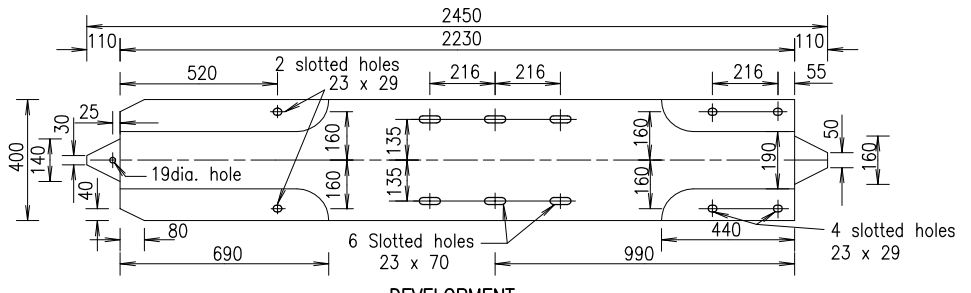
BUFFERED END ASSEMBLY



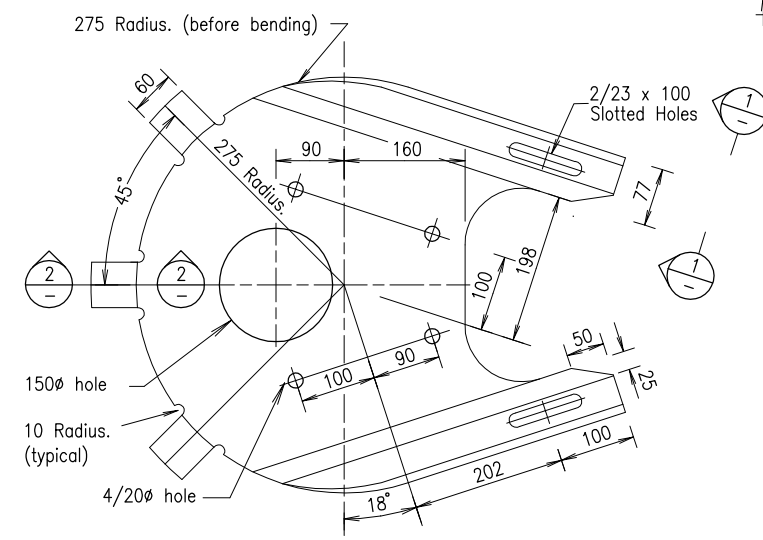
BUFFERED END & ANCHORAGE ASSEMBLY



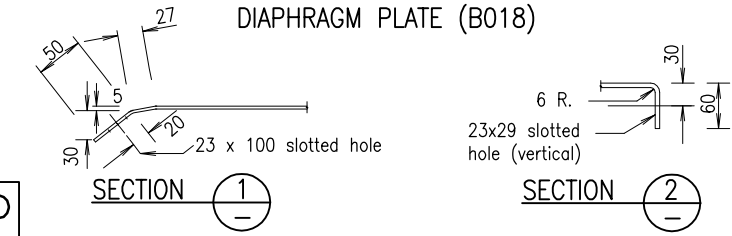
DETAIL B



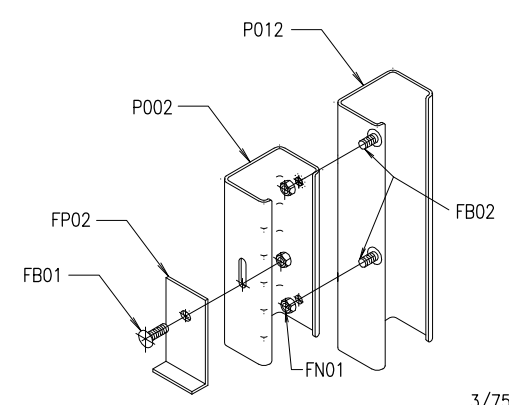
DEVELOPMENT BUFFERED END SECTION (B019)



DIAPHRAGM PLATE (B018)

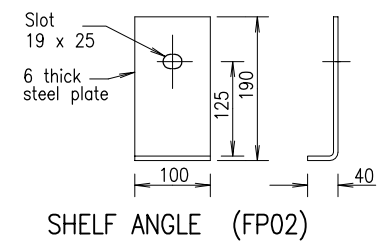


DIAPHRAGM PLATE DETAILS

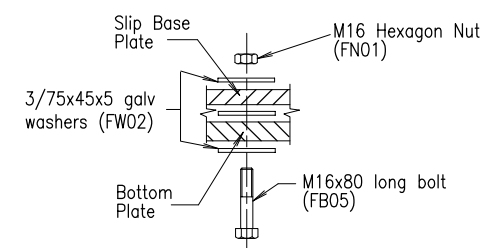


DETAIL C

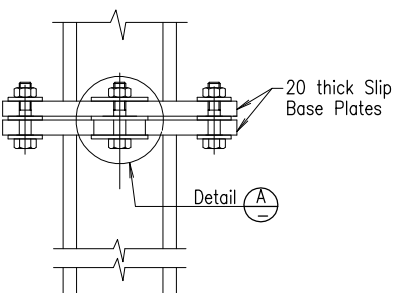
SHELF ANGLE & BLOCK ASSEMBLY POSTS #2 TO #6



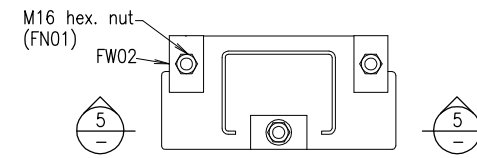
SHELF ANGLE (FP02)



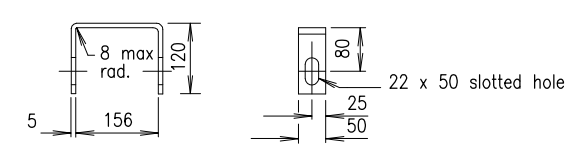
DETAIL A



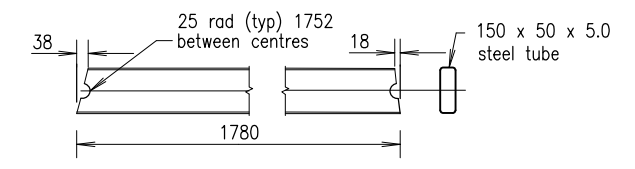
SECTION 5



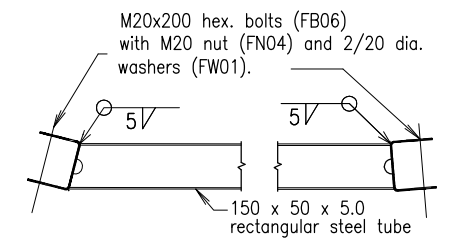
SLIP BASE PLATE INSTALLATION DETAIL



YOKE DETAILS



STRUT DETAILS



STRUT AND YOKE ASSEMBLY (P014)

Welding shall be in accordance with AS/NZS 1554.1

NOTES :

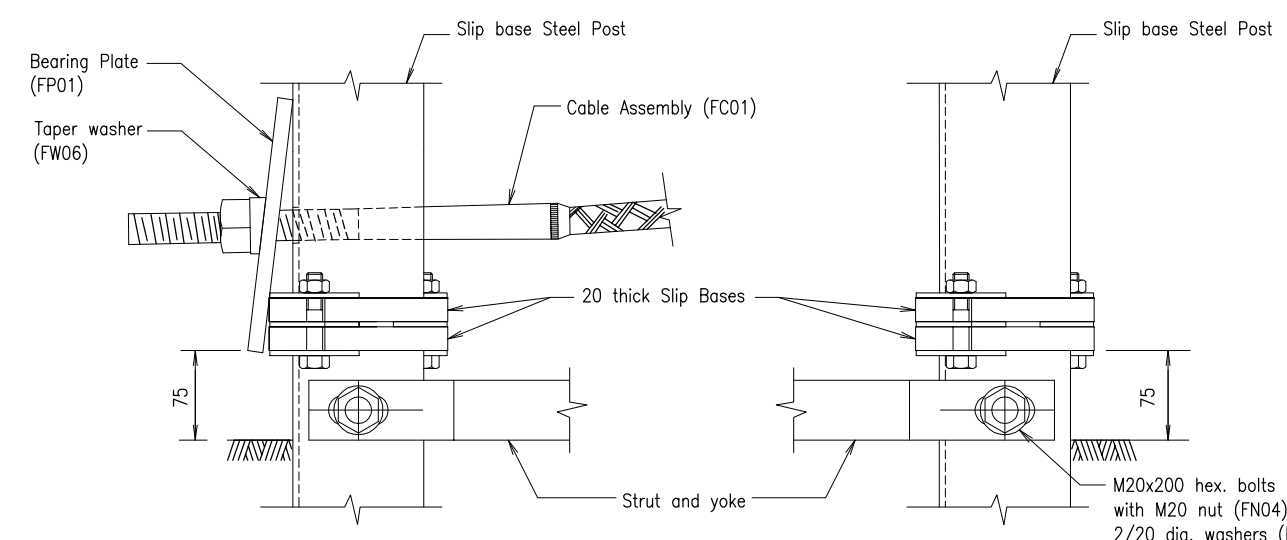
- DIAPHRAGM from 3.0 BMT Grade HA250 steel to AS/NZS 1594, treated to AS 1627 and hot dip galvanised to AS/NZS 4680 after fabrication.
- BUFFERED END SECTION from 2.7 BMT Grade HA350 steel to AS/NZS 1594, treated to AS 1627 and hot dip galvanised to AS/NZS 4680 after fabrication.
- SHELF ANGLE from 6 BMT Grade 250 to AS/NZS 1594 and hot dip galvanised to AS/NZS 4680 after fabrication.
- STRUT AND YOKE : Strut to be Rectangular Hollow Section Grade 350 in accordance with AS 1163. Yoke to be steel Grade 300 in accordance with AS/NZS 1594. Strut and Yoke Assembly to have weld spatter and slag removed prior to hot dip galvanising to AS/NZS 4800.
- FLAME CUTTING of components is not permitted.
- TIGHTENING OF NUTS : Nut FN01 for slip base plates to be tightened to 25 Nm. Nut FN05 to cable assembly to be tightened so that there is no slack in the cable. All other nuts shall be snug tight to AS 4100.
- DIMENSIONS are subject to manufacturer's tolerances except where allowable tolerances are nominated.
- DIMENSIONS are in millimetres unless otherwise shown.

ASSOCIATED DOCUMENTS :

- Department of Main Roads Manual of Standard Drawings Roads
- Department of Main Roads Manual of Standard Specifications Roads

REFERENCED DOCUMENTS :

- Standard Specifications :
MRS11.14 Road Furniture
- Standards Drawings :
1474 Steel Beam Guardrail - Installation and Setout
1477 Steel Beam Guardrail - Posts and Blockouts, Soil and Bearing Plates, Slip Base Plate
1478 Steel Beam Guardrail - W Bea anchor Bracket Delineation Unit Post on Base Plate Abraham Blockout
1479 Steel Beam Guardrail - Bolts, Nuts, Screws and Washers, Cable Assembly with Fasteners
1480 Steel Beam Guardrail - Fabrication Details for W beam Rails and Rail Components
- Australian Standards :
AS 1101.3 Graphical symbols for general engineering - Welding and non-destructive examination
AS/NZS 1252 High strength steel bolts with associated nuts and washers for structural engineering
AS 1554 Structural Steel Welding
AS/NZS 1594 Hot Flat Products
AS 1627 Metal Finishing - Preparation and Pretreatment of Surfaces
AS/NZS 3845 Road Safety Barrier Systems
AS 4100 Steel Structures
AS/NZS 4671 Steel Reinforcing Material
AS/NZS 4800 Hot-Dip galvanized (zinc) coating on fabricated ferrous articles



DETAIL E

DETAIL F

STEEL BEAM GUARDRAIL



TERMINAL COMPONENTS

Size A3	Drawing No
Not to Scale	1476
	Date 8/06
	A B C D E

1476