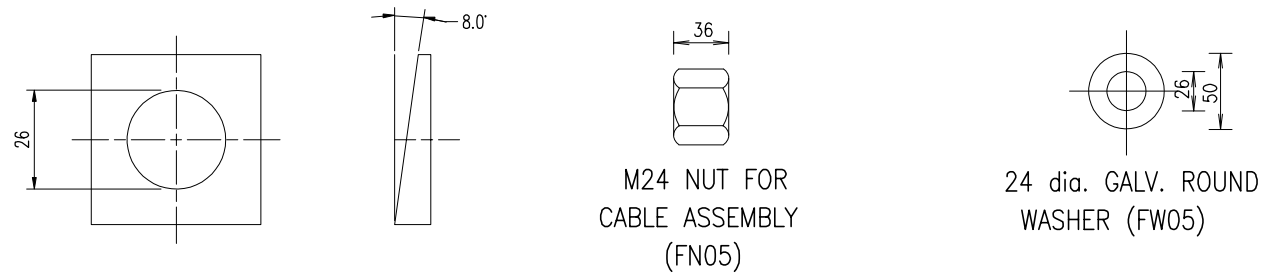
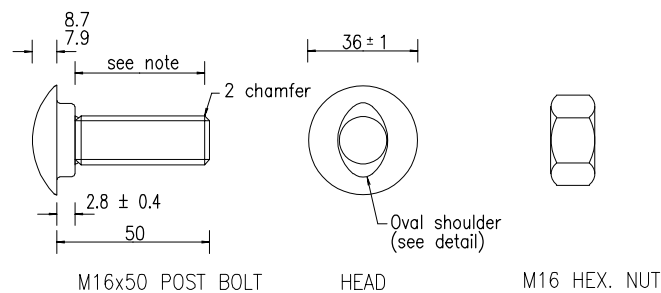


CABLE ASSEMBLY (FC01)

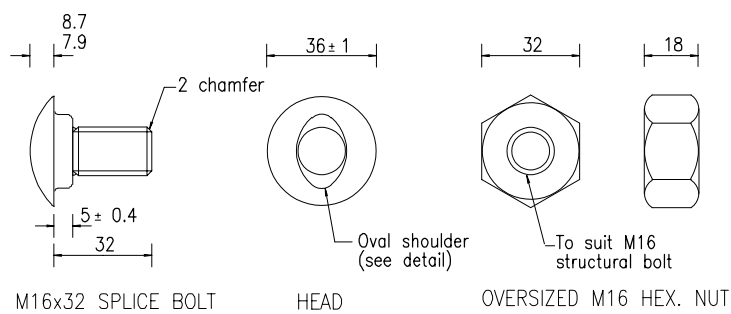


SQUARE TAPER WASHER (FW06)  
(Terminal Type 1 only)

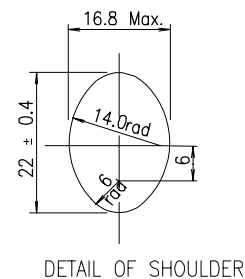
CABLE ASSEMBLY AND FASTENERS  
(for MELT and departure end treatment)



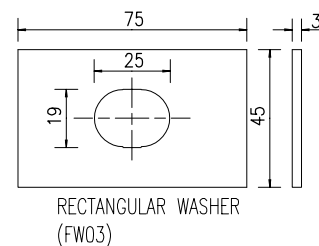
MUSHROOM HEAD POST BOLT (FB01) & NUT (FN01) FOR RAIL CONNECTION TO BLOCKOUT PIECE



MUSHROOM HEAD SPLICE BOLT (FB03) AND OVERSIZED NUT (FN02) FOR RAIL TO RAIL CONNECTION

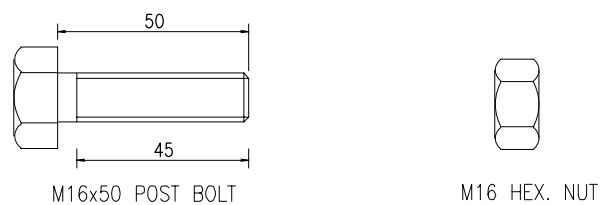


DETAIL OF SHOULDER



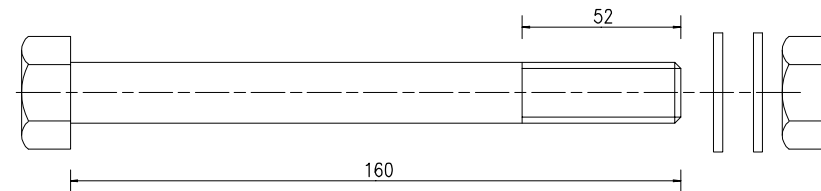
RECTANGULAR WASHER (FW03)

Washer (FW03) to be used only on end treatments, not on mid span lengths of rail.

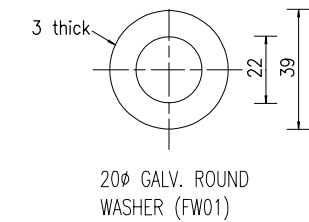


M16x50 POST BOLT (FB07) & NUT (FN01) FOR RAIL CONNECTION TO POST #1 IN MELT

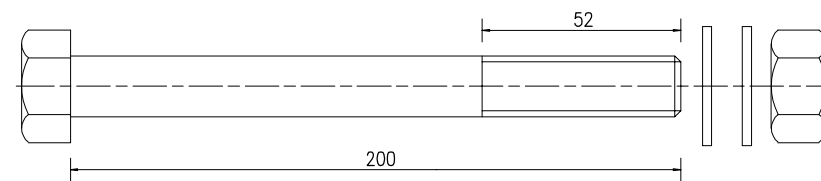
M16 BOLTS & NUTS - RAIL



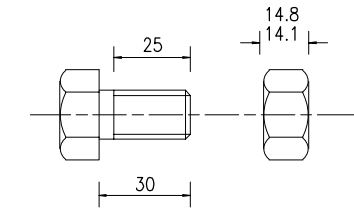
M20x160 BOLT (FB08), WASHERS (FW01) AND NUT (FN04) SOIL PLATE CONNECTION TO STEEL POST - MELT



20Ø GALV. ROUND WASHER (FW01)

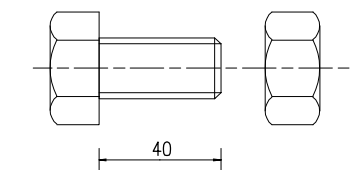


M20x200 BOLT (FB06), WASHERS (FW01) AND NUT (FN04) STRUT AND YOKE CONNECTION TO STEEL POSTS - MELT

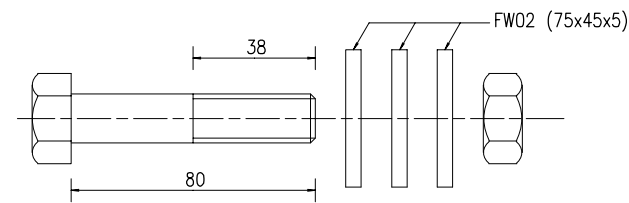


M16x30 BOLT (FB02) AND NUT (FN01) BLOCKOUT CONNECTION TO POST

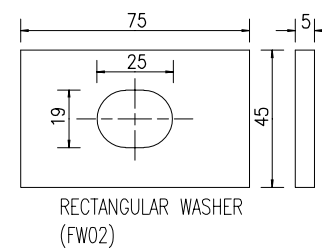
FASTENER COMPONENTS TO POSTS - HEXAGON HEAD BOLTS AND NUTS



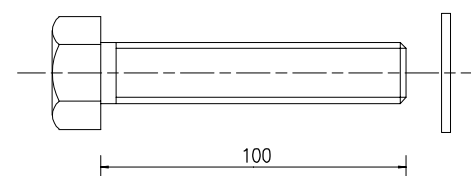
M20x40 BOLT (FB09) & NUT (FN04) SOIL PLATE CONNECTION TO POST - DEPARTURE END TREATMENT



M16x80 BOLT (FB05), RECTANGULAR WASHERS (FW02) AND NUT (FN01) FOR SLIP BASE PLATE CONNECTION TO BOTTOM SLIP BASE PLATE



RECTANGULAR WASHER (FW02)



M20x100 HEXAGON HEAD SCREW (FB11) AND WASHER (FW01) FOR BASE PLATE (PP01) CONNECTION TO CONCRETE SURFACE

POST BASE PLATE HEXAGON HEAD SCREW AND SLIP BASE PLATE HEXAGON HEAD BOLT AND NUT

NOTES:

- POST BOLTS FB01 & FB07 to have physical properties identical to AS/NZS 1111 (grade 4.6). Hexagon nut FN01 to AS 1112 (grade 5). SPLICE BOLT FB03 and NUT FN02 to have physical properties identical to AS/NZS 1252 (class 8.8). Nuts shall be tapped to suit galvanised threads. The length of thread on mushroom headed bolts FB01 & FB03 to be such that the nut shall touch the oval shoulder when tightened by hand.
- HEXAGON BOLTS AND SCREWS to AS/NZS 1111 (grade 4.6).
- HEXAGON NUTS to AS 1112 (grade 5). Nuts shall be tapped to suit galvanised threads.
- BLACK STEEL WASHERS, large series to AS 1237 and taper washer to AS/NZS 1252.
- ALL BOLTS, NUTS, SCREWS AND WASHERS to be treated to AS 1627 and shall be hot dip galvanised in accordance with the requirements of AS 1214.
- CABLE ASSEMBLY :
  - Cable to be minimum 20 dia. 6x19 or 6x25 wire strand core or independant wire rope core, galvanised, right regular lay to AS 3569.
  - Cable shall be supplied with two 36 thick M24 hexagon galvanised steel nuts, two 5 thick gal. steel washers and one galv. taper washer.
- TIGHTENING OF NUTS: Nut FN01 for slip base plates to be tightened to 25 Nm. Nut FN05 to cable assembly to be tightened so that there is no slack in the cable. All other nuts shall be snug tight to AS 4100.
- DIMENSIONS are subject to manufacturer's tolerances except where allowable tolerances are nominated.
- ALL DIMENSIONS in millimetres unless otherwise shown.

ASSOCIATED DOCUMENTS:

Department of Main Roads Manual of Standard Drawings Roads  
Department of Main Roads Standard Specifications Roads

REFERENCED DOCUMENTS:

Standard Specifications:

Road Furniture  
Australian Standards:

AS/NZS 3845 Road Safety Barrier Systems

STEEL BEAM GUARDRAIL			
BOLTS, NUTS, SCREWS AND WASHERS		Size A3	Drawing No
CABLE ASSEMBLY WITH FASTENERS		Scales	1479
		as shown	Date 12/01
			A B C