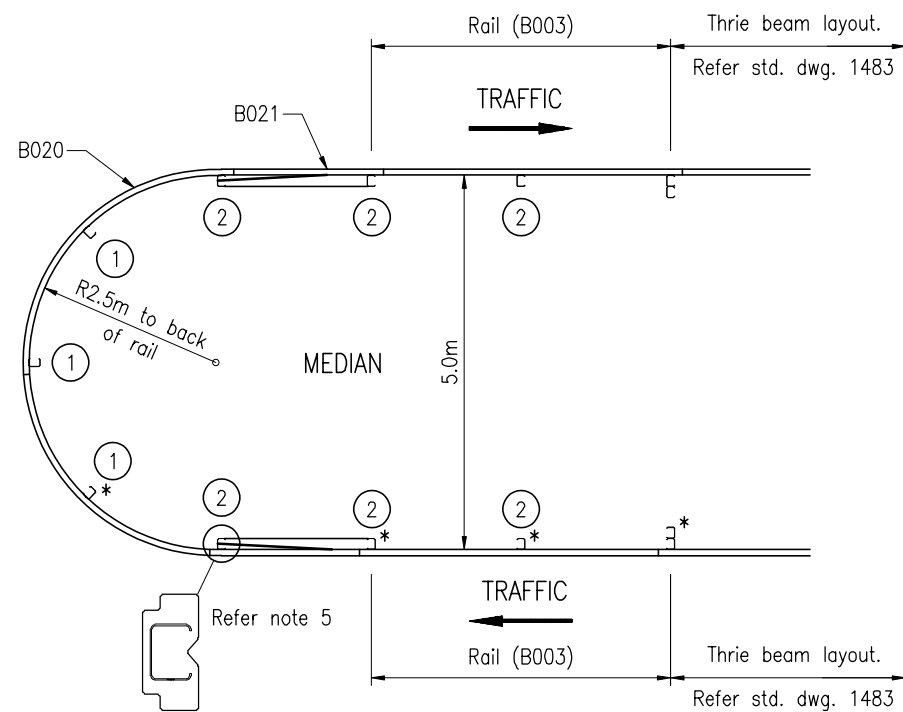


BULLNOSE - W BEAM PLAN
GORE CONFIGURATION

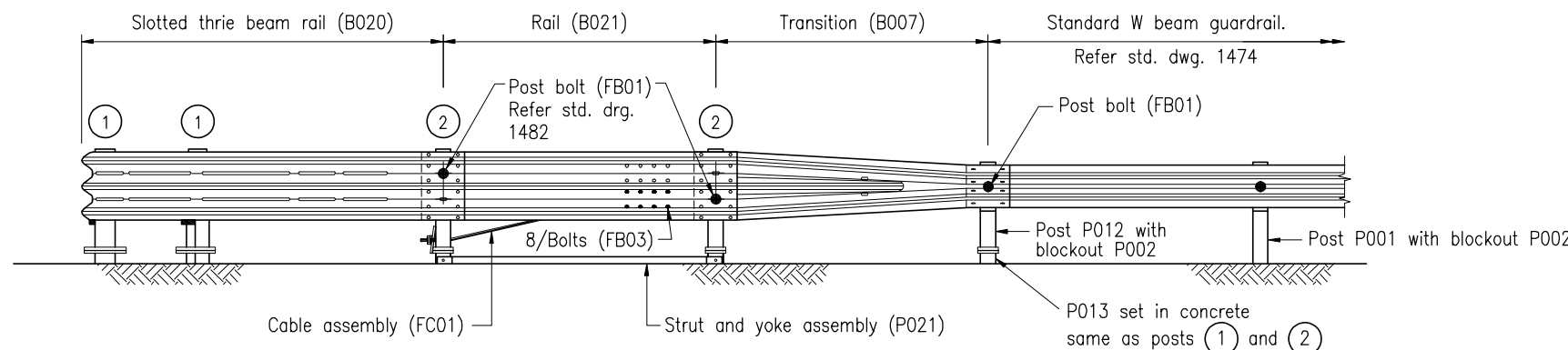


BULLNOSE - THRIE BEAM PLAN
MEDIAN CONFIGURATION

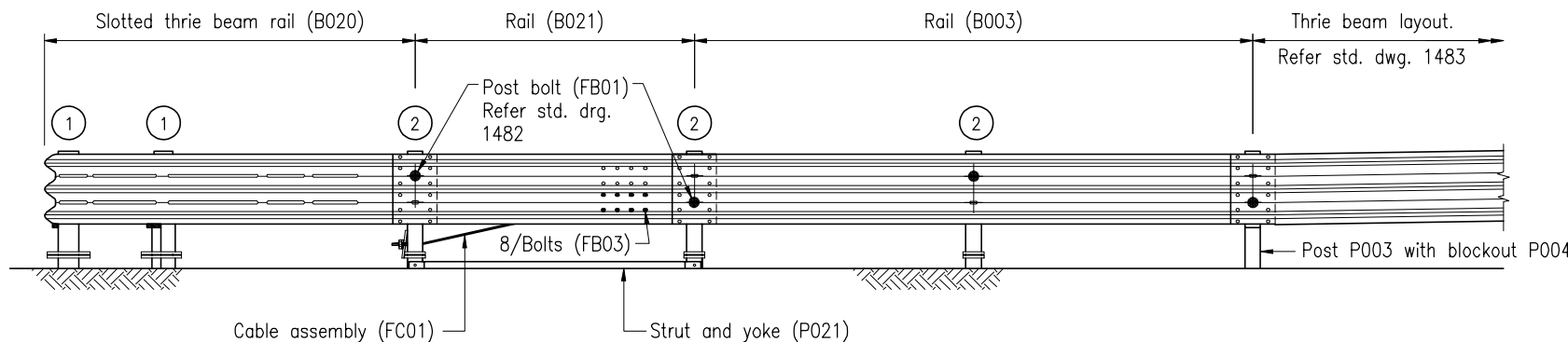


DIAGRAM A

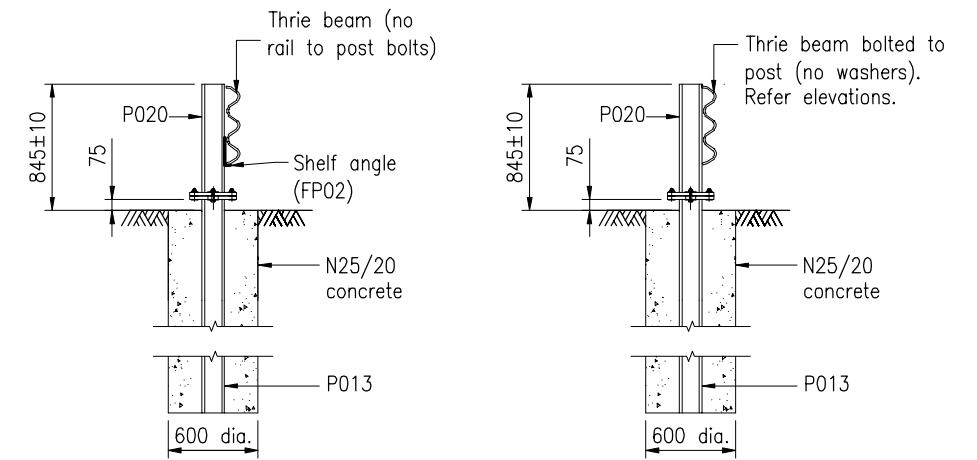
The area within the bullnose terminal shown hatched in Diagram A should be reasonably traversable and free from fixed object hazards. If a clear runout is not possible, this area should at least be similar in character to adjacent unshielded roadside areas.



BULLNOSE - W BEAM ELEVATION
GORE CONFIGURATION
Refer notes 2, 5, and 6.



BULLNOSE - THRIE BEAM ELEVATION
MEDIAN CONFIGURATION
Refer notes 2, 5, and 6.



SLIP BASE POST ①

SLIP BASE POST ②

NOTES:

- ACKNOWLEDGEMENT: Thrie Beam Bullnose is based on the Minnesota Bullnose with variations.
- BULLNOSE - GUARDRAIL CONFIGURATION ALTERNATIVES:
 - Bullnose - Thrie beam plan for gore configuration: Posts marked * are to be oriented as shown on the Bullnose-W beam plan.
 - Bullnose - W Beam plan for median configuration: Posts marked * are to be oriented as shown on the Bullnose-Thrie beam plan.
 - All other posts (without *) are to be oriented as shown and are common in all configurations.
- TIGHTENING OF NUTS: Nut FN01 for slip base plates to be tightened to 25 Nm. Nut FN05 to cable assembly to be tightened so that there is no slack in the cable. All other nuts shall be snug tight to AS 4100.
- FLAME CUTTING of galvanized post or rail is not permitted.
- POST AND BLOCKOUT orientation in relation to traffic direction as shown is essential. The exception is the post in the median, as indicated, to enable the correct fitting of the cable assembly.
- GUARDRAIL LAPS are to be in the direction of adjacent traffic to avoid exposing the end of the rail to oncoming vehicles.
- STIFFENER PLATES shall be used at posts without a rail lap except in the bullnose.
- COMPONENTS are detailed on std. dwg. 1489.
- GUARDRAIL ASSEMBLY AND SETTING OUT: Refer to std. dwgs. 1474, 1475, 1476, 1482 and 1483.
- ALL DIMENSIONS are in millimetres unless otherwise shown.

ASSOCIATED DOCUMENTS:

Department of Main Roads Manual of Standard Drawings Roads
Department of Main Roads Manual of Standard Specifications Roads

REFERENCED DOCUMENTS:

- Standard Drawings:
- 1474 Steel Beam Guardrail - Installation and Setout
 - 1475 Steel Beam Guardrail - Installation on Bridge and Barrier Approaches
 - 1476 Steel Beam Guardrail - Terminal Components
 - 1482 Steel Beam Guardrail - W Beam and Thrie Beam Assemblies.
 - 1483 Steel Beam Guardrail - Thrie Beam Layouts.
 - 1489 Steel Beam Guardrail - Thrie Beam Bullnose Components

Standard Specifications:

Road Furniture

Australian Standards:

AS/NZS 3845 Road Safety Barrier Systems

STEEL BEAM GUARDRAIL			
THRIE BEAM BULLNOSE INSTALLATION AND SETOUT		Size A3	Drawing No
		Scales	1488
		as shown	Date 10/03
		A	