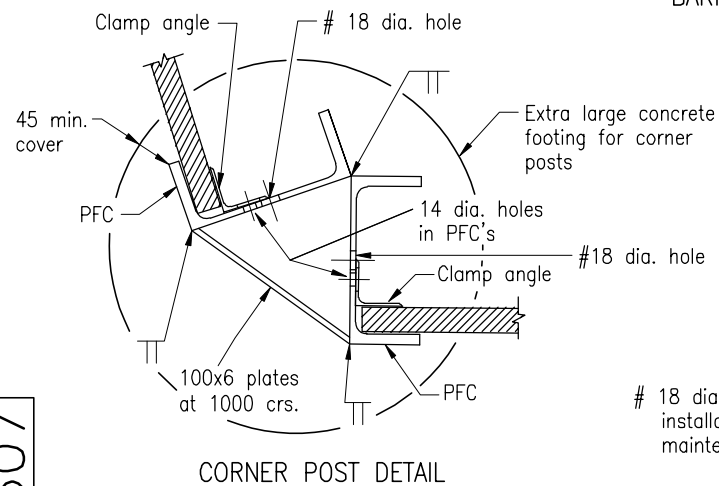
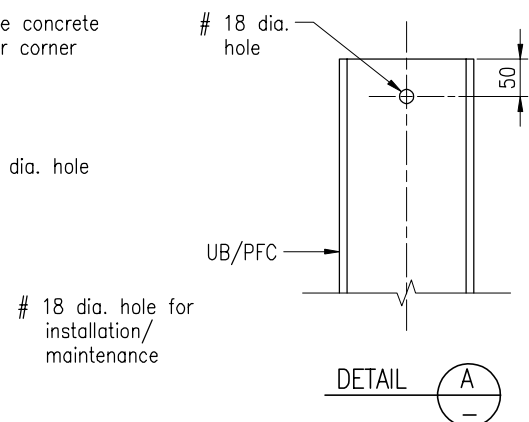


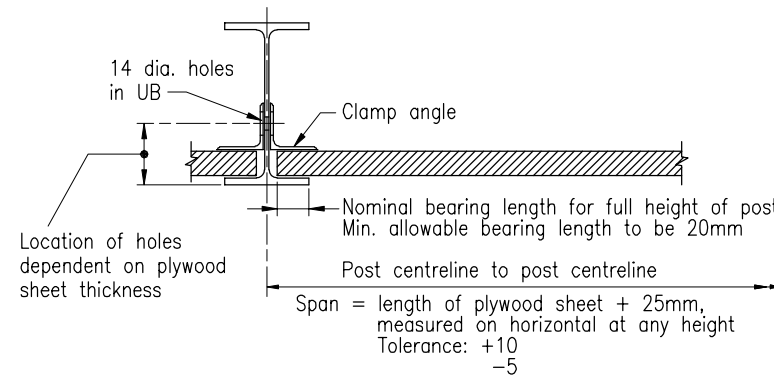
ELEVATION
BARRIER ASSEMBLY DETAIL



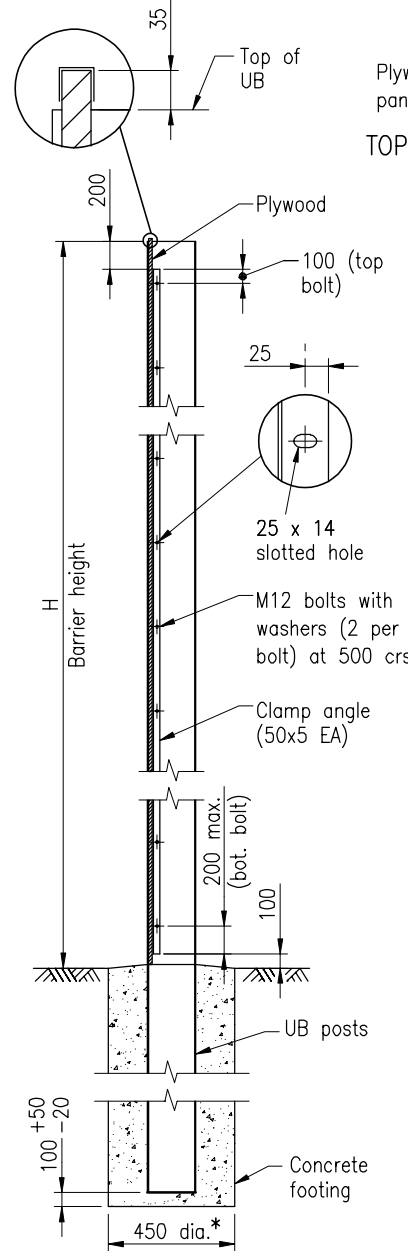
CORNER POST DETAIL



DETAIL A

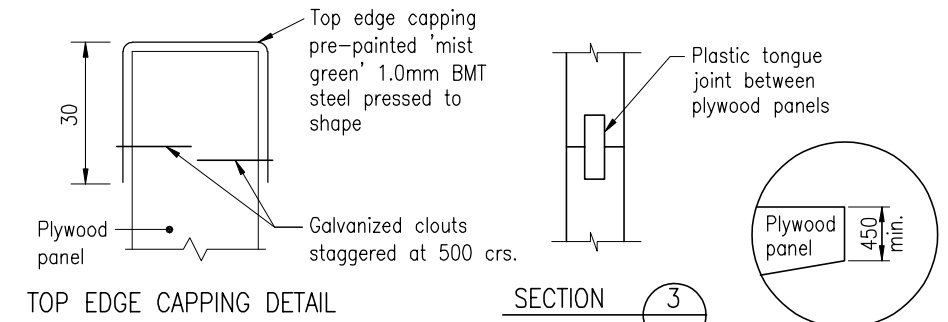


SECTION 2



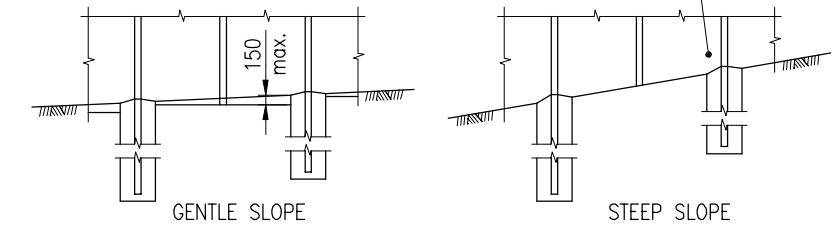
* Refer Notes 12 and 13

SECTION 1



TOP EDGE CAPPING DETAIL

SECTION 3



BARRIER TREATMENT ON SLOPES

NOTES:

- ALL DIMENSIONS to be verified on site by Contractor before fabrication of steel posts.
- STEEL POSTS:
 - Posts to be UB's except at corners. Posts to be composite PFC's at corners.
 - The barrier label and post number shall be welded (or by other method approved by the Superintendent) on each post and to be clearly visible after galvanizing eg [B2] ie Barrier B, Post No. 2.
 - 14mm diameter holes, for M12 bolts at 500mm centres, to be drilled.
 - Corner posts to be fabricated as detailed.
 - After fabrication, all posts to have weld splatter and welding slag removed prior to hot dip galvanizing to AS/NZS 4680.
- CLAMP ANGLES:
 - Clamp angles to be fabricated from 50x5 EA.
 - 25x14mm slotted holes at 500mm centres to align with 14mm diameter holes in posts.
 - Fabricated clamp angles shall be hot dip galvanized to AS/NZS 4680.
- HOT ROLLED SECTIONS shall be grade 300 or as specified to AS/NZS 3679.1.
- STEEL PLATES to be grade 250 to AS/NZS 3678.
- WELDING to be to AS/NZS 1554.1. Welding symbols are to AS 1101.3.
- SCREWS shall be self tapping 14 gauge type 17 hexagon head as specified in MRS11.15 Noise Barriers.
- WASHERS FOR SCREWS shall be 32mm OD Dekfast Part No. DS332145 metal/bonded washers or approved equivalent. The support material shall be 1mm galvanized steel or approved equivalent and the moulded material shall be EPDM Polymer.
- BOLTS to be grade 4.6 to AS/NZS 1111, nuts to be grade 5 to AS/NZS 1112 and washers to AS 1237. Bolts and nuts to be hot dip galvanized to AS 1214. Washers to be hot dip galvanized to AS/NZS 4680.
- PLYWOOD shall be stress grade F14 or better to AS/NZS 2269 and shall be treated to hazard level 4 (H4) if in contact with the ground and to hazard level 3 (H3) elsewhere.
- TIMBER BATTENS shall be structural sawn softwood F5 or better to AS/NZS 1748 or AS 2858 and treated to hazard level 4 (H4).
- CONCRETE GRADE to be N25/20. 45mm Minimum concrete cover to steel posts.
- DETAILS to be shown elsewhere in the documents:
 - Span lengths: End span and internal span
 - Footing depths D
 - Footing diameter if not standard 450mm
 - Barrier labels and post numbers
 - Design permissible wind speed (Vzp)
 - Barrier height H
 - UB and PFC sizes
 - Plywood thickness
 - Drainage slot details
- DIMENSIONS are in millimetres unless shown otherwise.

ASSOCIATED DOCUMENTS:

Department of Main Roads Manual of Standard Drawings Roads
Department of Main Roads Manual of Standard Specifications Roads

REFERENCED DOCUMENTS:

Standard Specifications:
MRS11.15 Noise Barriers

NOISE BARRIERS			
STRUCTURAL DETAIL UNIVERSAL BEAM POSTS PLYWOOD PANELS		Size A3	Drawing No
		Scales	1607
		as shown	Date 4/04
		A	B