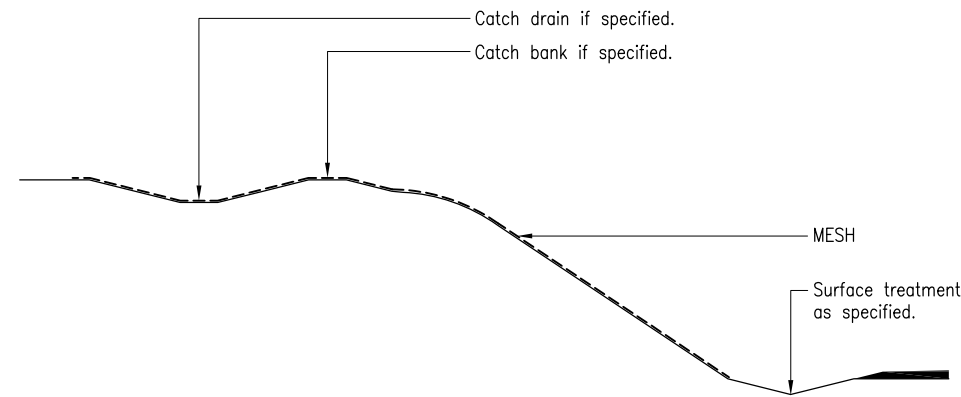
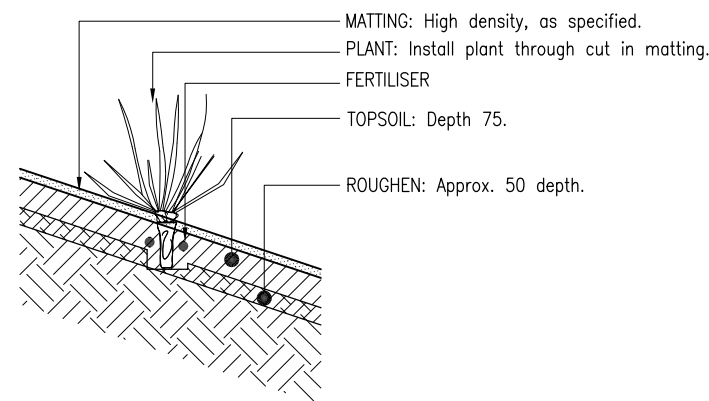


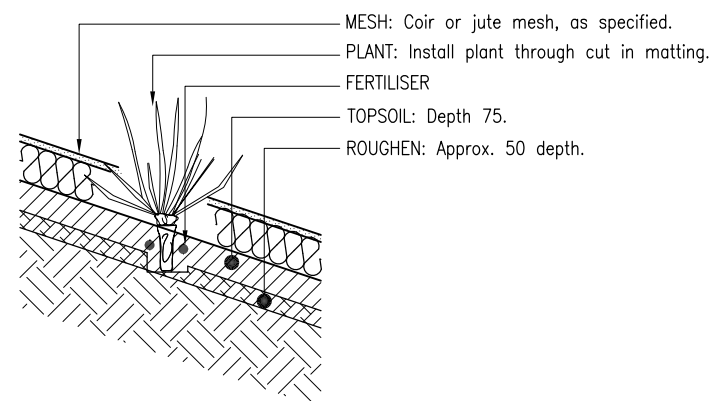
MATTING SECTION - DRAINAGE



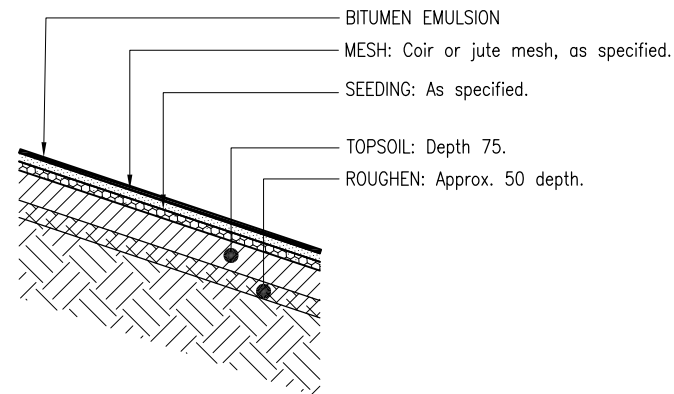
MESH SECTION - CUT BATTER



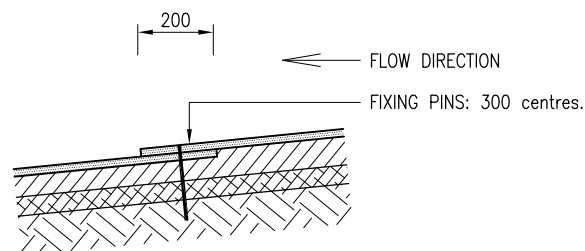
DETAIL 1  
1647 PLANTING DRAINAGE STRUCTURES WITH MATTING



DETAIL 2  
1647 PLANTING WITH MULCH SECURED WITH MESH



DETAIL 3  
1647 SEEDING - MESH LINED DRAIN



DETAIL 4  
1647 OVERLAP JOINT - DRAINAGE

NOTES:

- MATTING with container stock shall:
  - be a high density organic matting; and
  - be only used in planted drainage structures.
- MESH with seeding:
  - shall be an open coir or jute mesh;
  - may be used on slopes >1 on 2 in areas with high rainfall and / or erodible soils; and
  - may be used in grass drainage structures where additional protection is required due to water velocities.
- MESH with container stock:
  - shall be an open coir or jute mesh;
  - may be used to secure mulch on slopes >1 on 2 in areas with high rainfall.
- BITUMEN EMULSION shall be anionic slow setting.
- BITUMINOUS EMULSION shall be used on matting with seeding in drainage structures, in areas with erodible soils.
- AMELIORATION: Where is subsoil amelioration is required, ameliorants shall be applied to the surface prior to ground preparation operations (ripping, cultivation or roughening).
- ROUGHENING shall be carried out parallel to the contours.
- ROUGHENING shall roughen and form keys in the subsoil to prevent subsequent material slipping down the face of the slope.
- GROUND PREPARATION: Non-conforming stone, rubble and other deleterious material brought to the surface during ground preparation operations, shall be removed.
- TOPSOIL: Depths are after settlement has occurred. Allowance shall be made for settlement during installation.
- Any material protruding more than 50 mm above the surface shall be removed prior to placement of the matting.
- MATTING shall be in consistent contact with topsoil before securing.
- FIXING PINS shall be installed at centres, in areas between joins, as per manufacturers specifications.
- ERODIBLE SOILS have sodic and/or dispersive characteristics.
- DIMENSIONS are in millimetres unless shown otherwise.

ASSOCIATED DEPARTMENTAL DOCUMENTS:  
Standard Drawings  
Specifications

REFERENCED DOCUMENTS:  
Departmental Standard Drawings:  
1045 Treatment of Cut Batters  
1651 Vegetation Works - Seeding

Departmental Specifications:  
MRTS04 General Earthworks  
MRTS16 Landscape and Revegetation Works  
MRTS21 Bituminous Emulsion

Department of Transport and Main Roads		 <small>© The State of Queensland (Department of Transport and Main Roads) 2017  <a href="http://creativecommons.org/licenses/by/3.0/au">http://creativecommons.org/licenses/by/3.0/au</a> </small>	
VEGETATION WORKS			
MATTING	A3	Standard Drawing No	
	Not to Scale	1647	
		Date 7/17	
		A	B
		C	D
		E	